

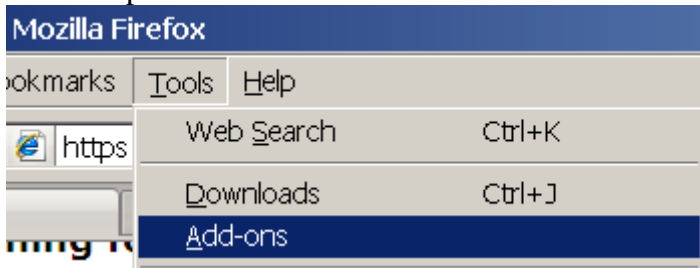
Instructions for the Firefox IE add-on for Internet Explorer (IE) functionality within Firefox.

First, make sure that you have an up-to-date version of Firefox (3.6 or greater).

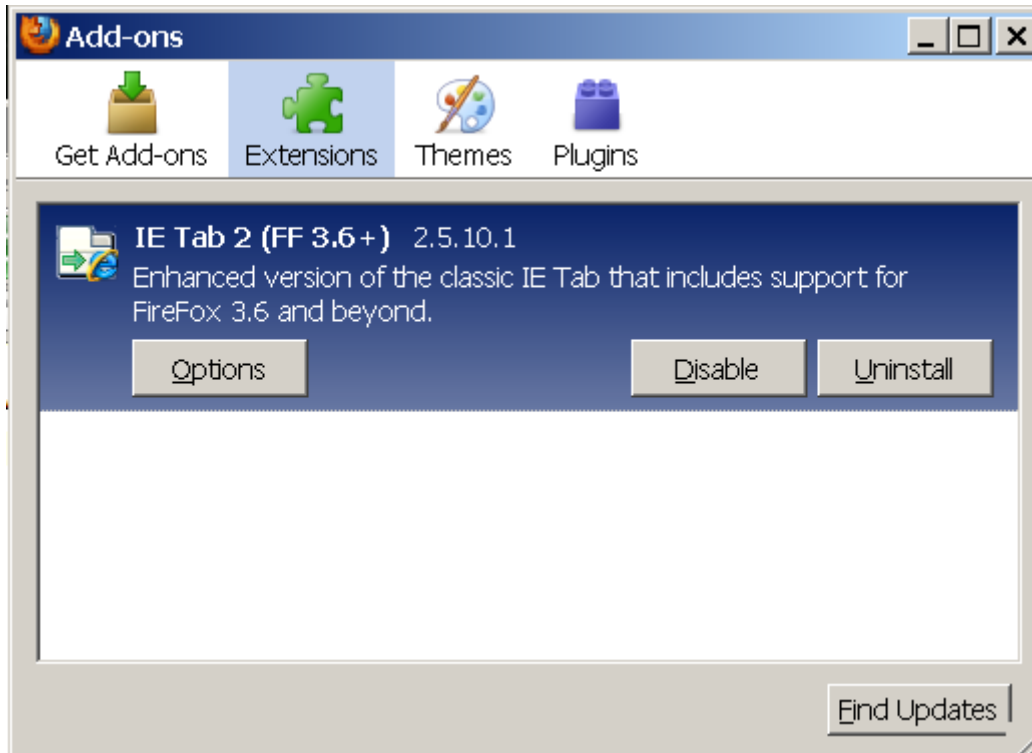
Then, download the Firefox add-on for IE and follow the next five steps:

<https://addons.mozilla.org/en-US/firefox/addon/92382/>

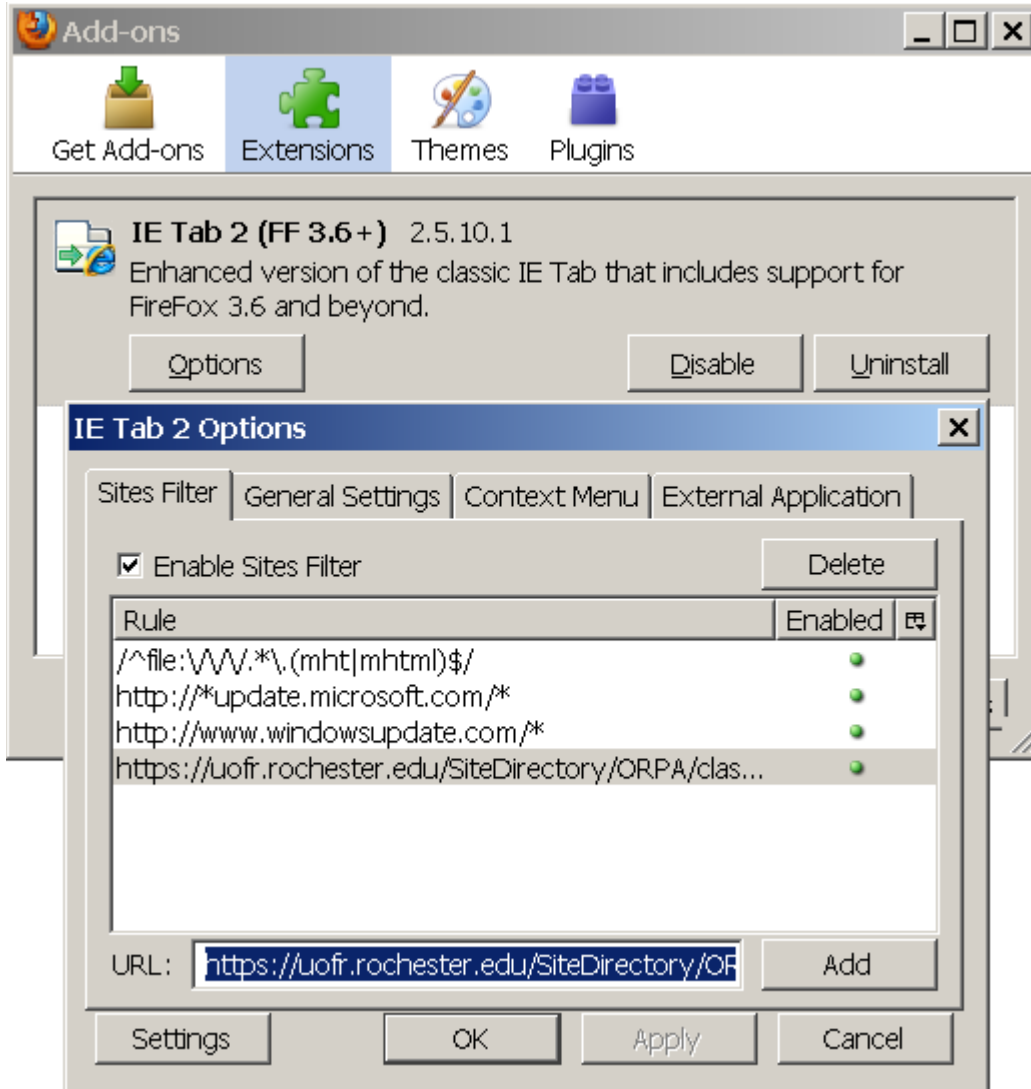
1. Save this file to your desktop.
2. Open Firefox and from the Tools menu select Add-ons.



3. Drag and drop the Add-on file inside the Add-on box



4. Restart Firefox and select the Add-on Options



5. Make sure that <https://uofr.rochester.edu/SiteDirectory/ORPA/clasptraining/> is added in the URL box and click the “Add” button.