

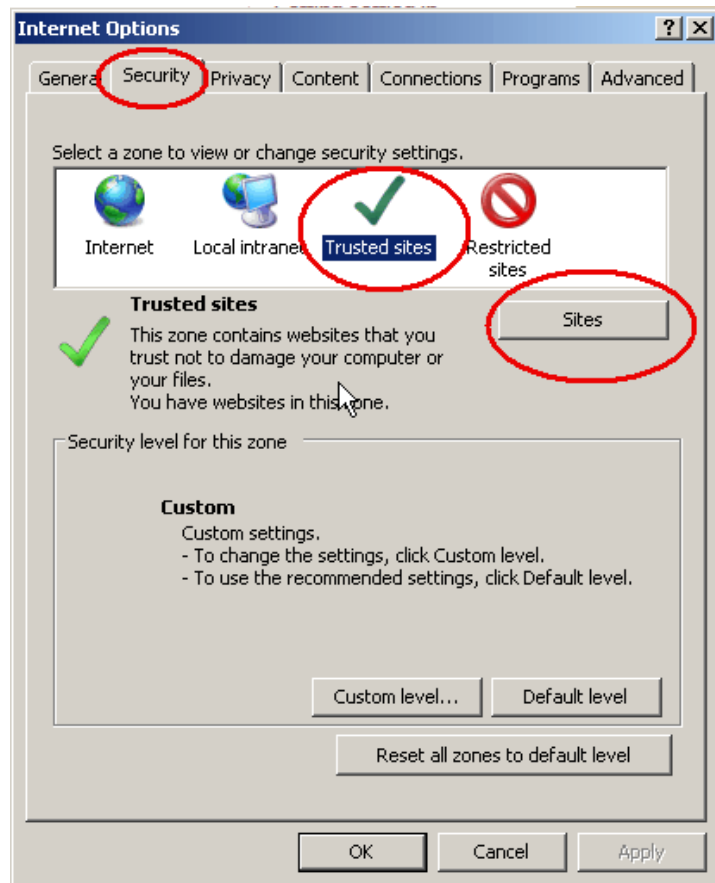
Configure your IE browser for SharePoint - to reduce the number of authentication requests

1) Navigate to the Trusted Sites using Internet Explorer (IE):

From the IE menu, go to Tools -> Internet Options -> Security Tab

2) Select the "Trusted Sites"

3) Click "Sites "

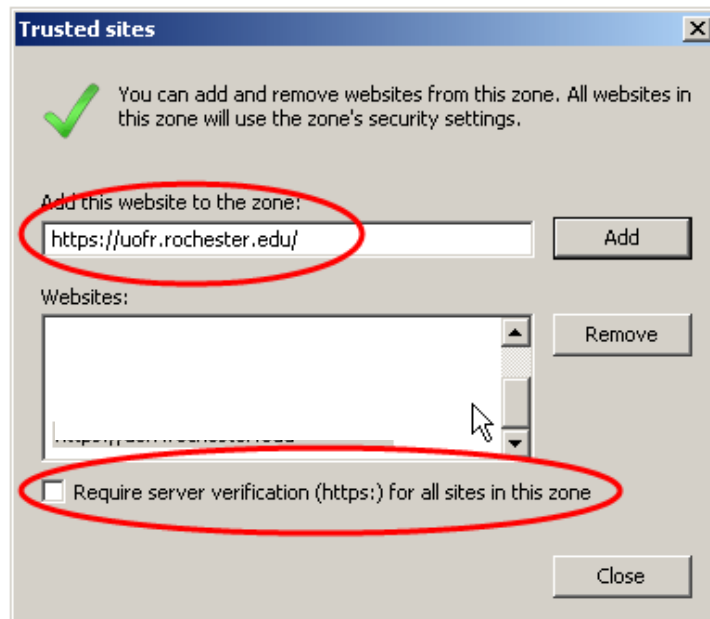


4) De-select the "Require Server verification..." checkbox and input the U of R address:
<https://uofr.rochester.edu>

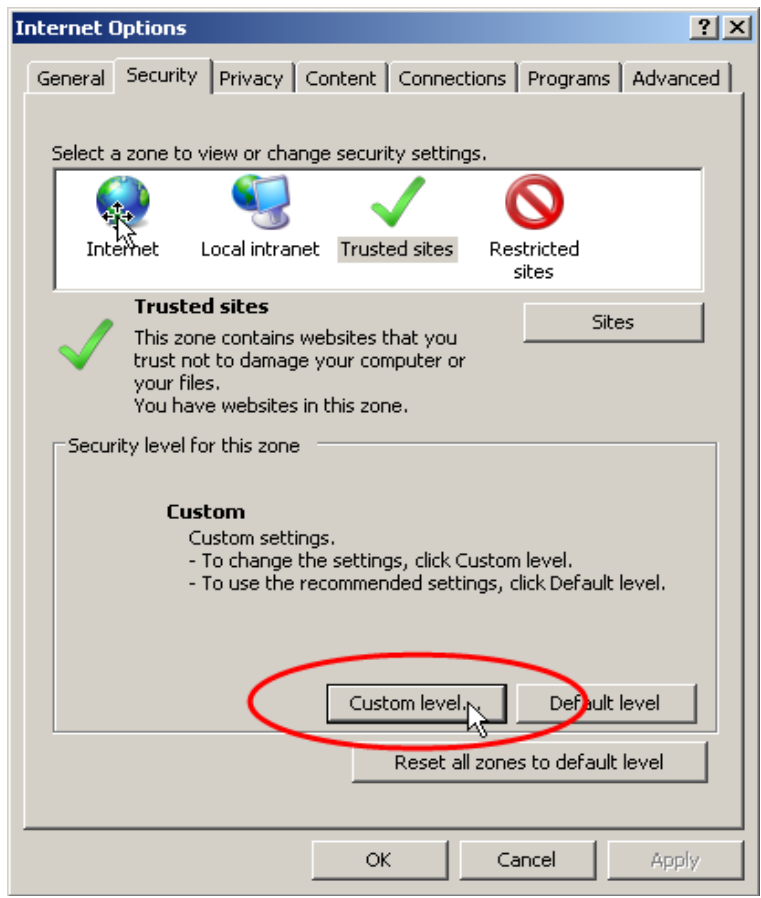
On the line:
"Add this website to the zone",
type:
<https://uofr.rochester.edu/>

Click "Add"

Click "Close"

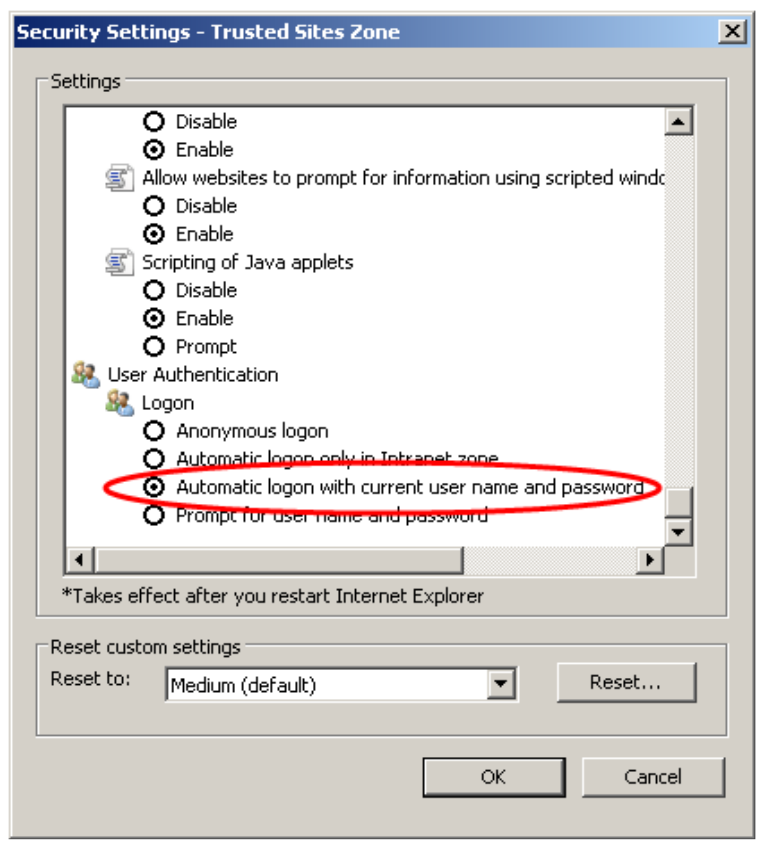


5) Back at the Security tab, Click "Custom level"



6) On the Security Settings for the Trusted Sites Zone, scroll down to the end of the page.

7) Under "User Authentication", "Logon"; verify that "Automatic logon with your current user name and password" is selected so that you can logon automatically with your (UR or URMCSH) credentials.



8) Click "OK" and restart your browser.