



UNIVERSITY of
ROCHESTER

OBR

FREE
Expedition Library
when you book
by 7/22/2011
Call for more
details.

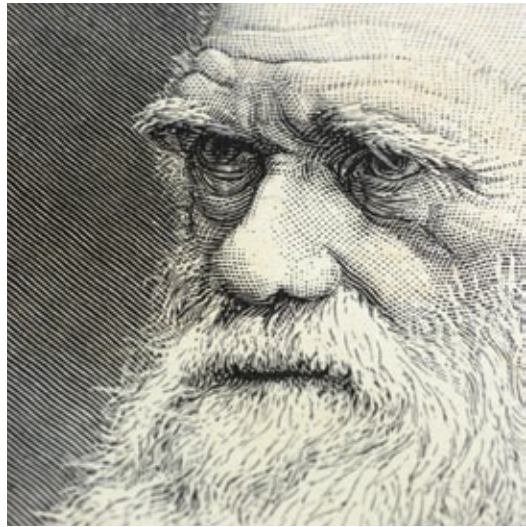
The Galapagos Islands

A 9-DAY EXPEDITION OF WONDER

FEBRUARY 6 – 14, 2012



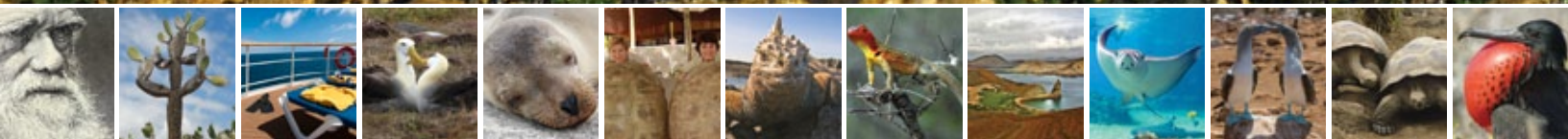
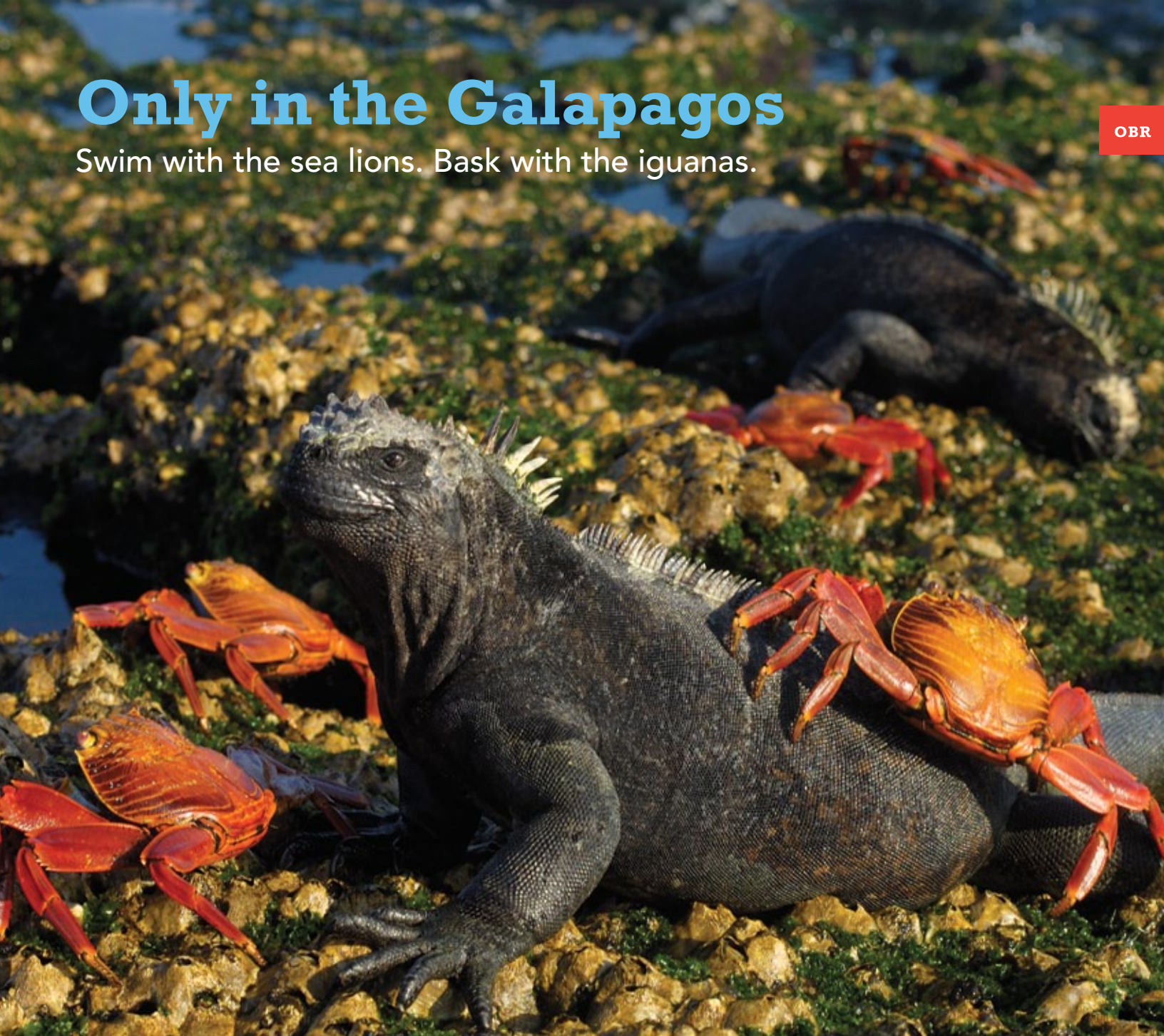
The
Galapagos Islands
A 9-DAY
EXPEDITION OF
WONDER



Only in the Galapagos

Swim with the sea lions. Bask with the iguanas.

OBR



Appreciate the diversity of life first-hand

Because the human presence in the Galapagos Islands is still relatively minimal, many of the animals are remarkably unafraid of visitors. You will have extraordinary opportunities to observe and photograph them at very close range.

See the big picture as well as the small details

Take part in an educational program of shipboard lectures and field observations with an Orbridge Expedition Leader. Onboard naturalists will also share their expertise and enthusiasm as you explore the Galapagos National Park.

Meet the protectors and the preservationists

You will be able to learn about the continuing efforts of the scientists, guides, rangers, and park managers who help to preserve and protect this UNESCO World Heritage Site and its inhabitants for future generations.

Behold an underwater world of natural wonders

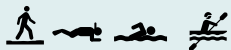
Take advantage of Isabela II's wetsuits and snorkel equipment to explore the world's second largest marine reserve. You will discover underwater flora and fauna as amazing and diverse as the species you will see on the surface.

Day 4: Santiago



After breakfast, disembark on the large, coffee-colored sand beach just north of the prized fresh water supply that once attracted pirates and whalers. A short walk inland takes you through a mangrove forest where sea turtles come to nest. Beyond the mangroves is a brackish lagoon where flocks of pink flamingos and white-cheeked pintails can be seen. After lunch on board, venture out onto the long lava shoreline teeming with a diverse variety of wildlife. Walk along the tidepools to see Sally Lightfoot crabs and observe a colony of Galapagos sea lions up close. (B/L/D)

Day 5: Fernandina / Isabela



The morning brings us to the youngest island of the archipelago, Fernandina. Disembark for a walk through the striking volcanic landscape of this remote island – home to the largest population of marine iguanas. At Punta Espinoza, a small inlet framed by mangroves, stroll among pelicans, frigates, hawks, and penguins, and keep your eyes open for the flightless cormorant. In the afternoon, head east to secluded Tagus Cove on the island of Isabela, where a hike to the saltwater-filled Darwin Crater will showcase stunning views of the area. (B/L/D)

Day 6: Isabela



After breakfast, disembark at Urbina Bay, located at the foot of volcanoes Alcedo and Darwin. Here you can find corals, shells, and many other calcareous organisms exposed above water. This area is also home to large and very colorful Galapagos land iguanas and giant tortoises. Along the shoreline guests may encounter flightless cormorants and penguins while snorkeling in this beautiful cove. (B/L/D)

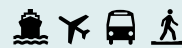
Day 7: Rábida / Santa Cruz



Disembark at Rábida Island. A stroll along the unusual, red-

colored beach of this small island reveals a large colony of sea lions, marine iguanas, mockingbirds, yellow warblers and several species of Darwin's finches. Snorkelers will enjoy the unique combination of underwater species and distinct landscapes. This afternoon at Cerro Dragón, view the bay and western islands of the archipelago along the trail to a natural nesting site for land iguanas. (B/L/D)

Day 8: Baltra / Guayaquil



After breakfast, disembark the ship at Baltra and board your flight to the mainland. In Guayaquil you'll have an evening on your own to explore and overnight at the Hilton Colon. (B)

Day 9: Guayaquil / Depart for U.S.



In the morning, transfer to the airport to board flights back home. (B)

Included in the program

1. 6 nights aboard the *Isabela II*, with exploration by pangas, naturalist-led hikes and excursions, evening lectures and guided stargazing.
2. Two nights at the Hilton Colon in Guayaquil.
3. Complimentary use of kayaks, wetsuits/shorties, masks, fins and snorkels.
4. All gourmet meals on board *Isabela II* (with complimentary house wine), as well as meals noted in the itinerary.
5. Internal air travel.
6. Transfers from/to Guayaquil airport (GYE) for guests arriving/departing on program dates, gratuities to airport drivers and porters on arrival/departure days.



YOUR LEADER
AND GUIDE

Maricarmen Ramirez

Orbridge
Expedition Leader

A native of Quito, Maricarmen started her naturalist career working as a guide in the Ecuadorian Amazon rainforest. A passion for nature drew her to the Galapagos Islands, where she has enjoyed working as guide and Chief Naturalist for almost twenty years.

Maricarmen has studied tourism and environmental development, and was a major contributor to the *Viva Travel Guides* guide to the Galapagos. She is also multilingual, and can chat with you in English, Spanish, French, German or Italian. Maricarmen lives in Ecuador.



Expedition Highlights

- Spend six comfortable nights aboard the deluxe, 40-guest *Isabela II* and two nights in Guayaquil at the Hilton Colon.
- Participate in shipboard lectures and guided excursions with an Orbridge Expedition Leader and three expert naturalists.
- Observe numerous endemic species such as the flightless cormorant, the Galapagos penguin, both marine and land iguanas, blue-footed boobies, giant tortoises, and the famous "Darwin's finches."
- Swim with curious and playful sea lions, and become part of the rich and complex marine world in the archipelago's clear waters.
- Learn about efforts to preserve this extraordinary UNESCO World Heritage Site.





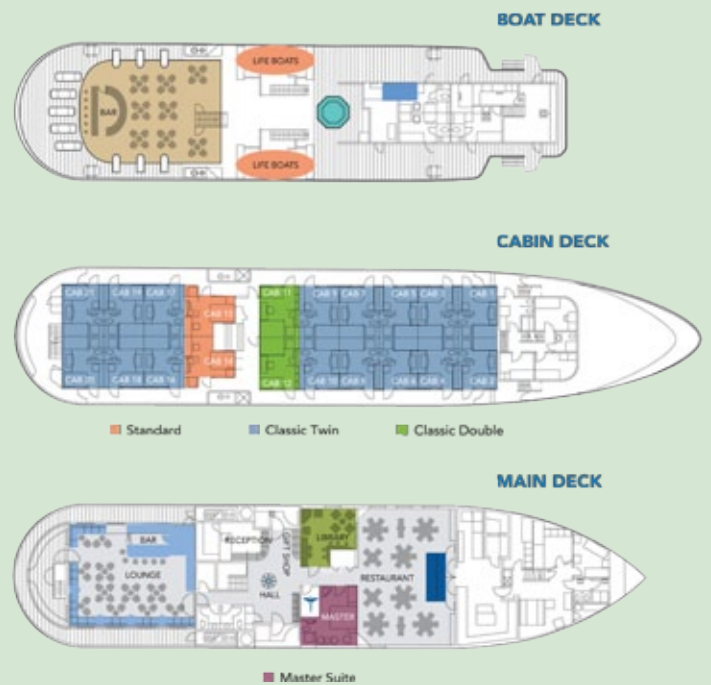
YOUR DELUXE SMALL VESSEL ISABELA II

Isabela II has been designed to provide the ultimate in luxury and adventure in the Galapagos Islands. Her 21 staterooms provide spacious and comfortable accommodations with *en suite* facilities. Guests can savor healthy, fresh, and delicious international and Ecuadorian cuisine at every meal. And, accompanied by talented naturalists, your Orbridge Expedition Leader, and a friendly crew, your shipboard experience will offer a wealth of opportunities to learn about history, wildlife, biology, conservation, and stargazing.

Cabin Category	Individual Pricing	Alumni Pricing*
Standard	\$5,199	\$4,995
Classic Double	\$5,599	\$5,495
Classic Twin	\$5,699	\$5,595
Master Suite	\$6,599	\$6,295
Single	\$7,899	\$7,295

7-Day Machu Picchu/Cusco Extension + \$3,995**

*Pricing is per person based on double-occupancy, in US Dollars. Excursions, most meals, and internal airfare included in program price. International airfare to/from Guayaquil, Ecuador is not included. **Airfare from Guayaquil to Lima not included.





7-DAY/6-NIGHT EXTENSION

MACHU PICCHU & CUSCO



Travel to the mist-shrouded mountain citadel of the Incas. So remote and inaccessible that it was left untouched by the Spanish conquistadors, Machu Picchu was unknown to the outside world until Hiram Bingham rediscovered it in 1911. During your time in the Peruvian highlands, you will have a

chance to explore the famous city of Cusco and the Sacred Valley of the Incas. Ride the train through the Urubamba valley, marvel at the massive stone stairs at Ollantaytambo, and break bread in the home of a local Peruvian outside of Cusco.

Extension Rate:

\$3,995 (\$4,795 single)

Pricing is per person based on double-occupancy, in US Dollars, unless otherwise noted. Excursions, most meals, and internal airfare included in program price. Airfare from Guayaquil to Lima not included.

7-DAY ITINERARY

- Day 1:** Guayaquil / Lima
- Day 2:** Lima / Cusco / Urubamba (Sacred Valley)
- Day 3:** Urubamba / Willoq / Ollantaytambo
- Day 4:** Urubamba / Machu Picchu / Aguas Calientes
- Day 5:** Machu Picchu / Aguas Calientes / Cusco
- Day 6:** Cusco / Sacsayhuaman / Koricancha / San Blas
- Day 7:** Cusco / Lima / U.S.

To add Machu Picchu & Cusco to your journey, please indicate it on the enclosed reservation form.

Journey Highlights

- Experience both sunset and sunrise at Machu Picchu, with plenty of time for exploration during your two days in Aguas Calientes
- Walk the recently restored Inca Bridge or enjoy a leisurely hike on the last section of the famous Inca Trail
- Ride the famous Vistadome train through the Urubamba Valley
- Marvel at the massive stoneworks at Ollantaytambo
- Explore the colonial heart of Cusco (a UNESCO World Heritage site since 1983), built on the remains of the Inca capital
- Visit the walled complex of Sacsayhuaman and the sacred site of Koricancha (Temple of the Sun)
- Visit the San Blas artists' colony, where you will be able to meet local artists and produce your own painting, sculpture, or ceramic ware
- Visit the ancient Maras salt mines, built by the Incas and still in production today
- Participate in lectures, field presentations, and excursions with local experts



EXTENSION ACCOMMODATIONS*

Inkaterra Machu Picchu Pueblo

Only steps away from the train station, the Inkaterra Machu Picchu is nestled on twelve quiet cloud-forest acres with nature trails, waterfalls, and the world's largest private collection of indigenous orchids. Relax in an atmosphere of refinement, caring and warm hospitality, while exploring nature and encountering the wonders of the Inca civilization.

Sonesta Posadas del Inca

Located in the heart of the Sacred Valley, the Sonesta Posadas del Inca inhabits an 18th-century former monastery surrounded by beautiful gardens. Situated at an elevation of 1500 ft below Cusco, acclimate to the altitude as you enjoy the hotel's quiet colonial charm.

Libertador Palacio del Inka – Cusco

The luxurious Libertador Palacio del Inka is situated in front of the Koricancha, or Sun Temple, in the heart of old Cusco, only minutes away from colonial buildings and archaeological sites. It occupies the fabulous "Casa de los Cuatro Bustos," where Francisco Pizarro, first Spanish governor of Peru, once lived. The hotel was built on the foundations of the "Aclla Huasi," where the chosen women of the Inca were housed. Some of its original walls still remain.



The
**Galapagos
Islands**

FEBRUARY 6 – 14, 2012



Send or fax reservation form and deposit to:

Orbridge
P.O. Box 10339
Bainbridge Island, WA 98110
Fax: (206) 452-5655

For more information:

(866) 639-0079 or (877) 635-4672

Guest Information:

Name (as it appears on passport) _____ Class Year _____

Name (as it appears on passport) _____ Class Year _____

Billing Address _____

City _____ State _____ ZIP Code _____

Home Phone _____ Alternate Phone _____

Email Address (*very important*) _____ Fax Number _____

Reservation Information:

_____ guests joining the program + _____ guests joining the extension

Accommodation Preference:

1st choice _____ 2nd choice _____

Deposits:

Program deposit \$ _____ (\$850/person)

Extension deposit \$ _____ (\$500/person)

Total deposit \$ _____

Payment:

Secure my deposit with the following credit card

Card type: MasterCard Visa American Express

Name as printed on card: _____

Card number: _____

Expiration date: _____ CVC code: _____

Secure my deposit with the enclosed check (payable to Orbridge LLC)

I/we have read, understand, and agree to the full Terms & Conditions detailed on the following page and at <http://terms.orbridge.com>; that the information provided on this form is true, correct, and complete; and that Orbridge LLC is authorized to charge my credit card above and/or take my/our deposit for this program.

Signature: _____ Date: _____
Required

Signature: _____ Date: _____
Required

How did you hear about this program?

- Alumni Catalog Alumni Brochure Program Preview Email Alumni Website
 Orbridge Website Prior Orbridge Guest Other _____

Orbridge Terms and Conditions

These terms and conditions ("Agreement") apply to and control any travel services offered by or through Orbridge LLC or any of its Affiliates (together and in the alternative, "Orbridge", "we", "us", "our"). For purposes of this Agreement, the term "Affiliates" means any natural person or legal entity that is controlled by, controls, or is under common control with Orbridge. "Control" means the ability, whether directly or indirectly, to direct the affairs of Orbridge by means of ownership, contract, employment relationship or otherwise. "You" and "your" means each program participant.

a. Rates. Program rates are based on minimum participation levels, current fares (air, water, land), tariffs and currency values. While Orbridge does everything possible to maintain the listed program rates, they are subject to change effective immediately upon posting unless otherwise specified by Orbridge.

b. Registration, Deposits and Final Payment. To confirm and secure your reservation, a deposit of \$850 per person per program and \$500 per person per extension, payable by check, money order, wire transfer of same day US funds, or major credit card is due at the time of registration. Final payment including any extension(s) is payable by check, money order, or wire transfer of same day US funds ONLY and due no later than 90 days prior to the scheduled program departure date. If your reservation is made fewer than 90 days prior to departure, the entire cost of the program, plus any extension, is due at the time of registration by check, money order, or wire transfer of same day US funds ONLY. If final payment is not received by Orbridge at least 90 days prior to the scheduled program departure date, (a) the reservation is subject to a late payment fee equal to 2% (or the maximum legal rate, if less) of the total invoice amount, per week until paid in full, and (b) Orbridge may, at any time and with or without notice, cancel your reservation in its sole and absolute discretion. All payments we receive from you are herein defined as "Payments".

c. Cancellations and Refunds. All cancellations must be submitted to Orbridge in writing and will be subject to a cancellation fee ("Cancellation Fee") as follows: (a) if the cancellation notice is received by Orbridge 151 or more days prior to the scheduled departure date, the cancellation fee will be \$500 per person per program and \$300 per person per program for any extension; (b) if the cancellation notice is received by Orbridge between 150 and 91 days prior to the scheduled departure date the cancellation fee will be forfeiture of the full deposit per person per program including any extension; (c) if the cancellation notice is received by Orbridge 90 or fewer days prior to the scheduled departure date, the cancellation fee will be the full program price. In addition to and not in lieu of the foregoing, a Cancellation Fee equal to 100% of the carrier charge applies to all non-refundable airfares due to your cancellation made at any time prior to the scheduled program departure date, as applicable. Refunds, if any, of any Payments in excess of the aggregate Cancellation Fee shall be processed within 30 calendar days of our receipt of your written notice.

d. Travel Insurance. Orbridge strongly recommends that you purchase travel and cancellation insurance to protect your interests in the event unexpected or unforeseen circumstances cause the cancellation of your trip. In addition, we recommend that you consider obtaining a policy(ies) that will cover some or all of your losses associated with damage or loss of luggage or personal effects. If you do not have, but are interested in, travel and cancellation insurance please contact us immediately.

e. Cancelled Programs. Orbridge reserves the right to cancel any program prior to the scheduled departure date for any reason whatsoever, including without limitation, insufficient participation or logistical problems that, in our sole reasonable judgment, may impede program operations. In the event of program cancellation by Orbridge for any reason whatsoever other than a force majeure event, your sole and exclusive remedy shall be the refund by Orbridge of all Payments received by Orbridge as of the date of cancellation, and the payment thereof shall release Orbridge from any and all other or further liability in any way related to such cancellation. Orbridge makes substantial payments to its suppliers (hotels, transportation companies, etc) far in advance of the scheduled program departure date. Accordingly, if a program is cancelled due to a force majeure event (e.g. acts of God, war, labor strikes, earthquake, flooding, etc.), Orbridge will undertake commercially reasonable efforts to promptly refund the portion of any Payments not already advanced to suppliers. In addition, Orbridge will use commercially reasonable efforts to recover and refund to you the balance of your Payments, less the costs, if any, of such recovery, as promptly as possible. However, (a) Orbridge does not guarantee recovery of any portion of advance payments made to suppliers, and (b) commercially reasonable recovery efforts under this Section shall not include or require, and shall be fully satisfied and performed exclusive of, the institution of any legal proceedings by or on behalf of Orbridge in any forum, venue or jurisdiction whatsoever. Orbridge is not responsible for, and you hereby release and forever discharge Orbridge from, any expense or cost incurred by you in preparing for or arising or resulting from a cancelled program, including without limitation, the cost of non-refundable airfare, other transportation, lodging and meal expense, visa fees, medical expenses, equipment and clothing purchases, and the cost of any additional or alternative arrangements you elect or are required to incur or make as a result of a cancelled program.

f. Itineraries. Accommodations and arranged excursions are subject to change or substitution at any time due to unforeseen circumstances or circumstances beyond Orbridge's control. Every reasonable effort will be made to operate programs as planned, but adjustments, substitutions and changes may occur after the final itinerary has been issued. Orbridge may, in its sole discretion, withdraw a program or any part of it, make such alterations or substitutions to the itinerary or program inclusions as it deems necessary or desirable, and pass on to program participants any expenditures, additional costs or losses caused by any such adjustments, or by delays or events beyond its reasonable control. In addition, Orbridge may, in its sole discretion, withdraw or modify a program if required by the tour operator or other vendor with whom Orbridge has contracted or by applicable governmental authority.

g. Not Included. Unless otherwise specifically noted in the itinerary, program prices do not include the following expenses, which if applicable are your sole responsibility to pay and satisfy: trip cancellation insurance and passenger travel protection plan; domestic, international, and internal airfares; transfers and luggage handling fees except in connection with scheduled group flights; costs associated with obtaining passports or entry visas; airport departure taxes; airline ticketing fees; airport transfers when arriving/departing on other than scheduled group dates; excess baggage charges; any new value added taxes or GST taxes added to program costs by applicable governmental authority; gratuities to drivers, guides, or ship's crew not specified; meals and beverages other than those specified as being included in the itinerary; sightseeing not included in the itinerary; personal expenses such as laundry, communication charges and optional activities (which are subject to availability); and ship, air, or transportation fuel surcharges, if applicable.

h. Health and Fitness to Travel. Some programs include physically active elements. To enjoy the program as intended, a minimum level of fitness is required. Accordingly, you must be in good physical and mental condition to participate. You represent and warrant to Orbridge that you have no physical, mental or other condition, impairment or disability that may or will cause or create a risk of injury or other hazard to yourself or others in respect to any aspect of the program you have selected. Orbridge may, in its sole discretion, limit, restrict or prohibit participation in any aspect of any program any individual that it considers in its sole discretion to be impaired or unsuitable due to fitness level. In addition, Orbridge may, in its sole discretion and at the participant's sole expense, remove from the program, or restrict the program-related activities of, any individual whose physical or mental condition may or is likely to cause a hazard to himself/herself or others, or otherwise impair the enjoyment of other program participants. Any physical condition requiring special attention, diet, or treatment must be reported in writing to Orbridge at the time a program reservation is made. Should you have any questions or need any clarification about a specific program, please ask for details at the time of registration. Notwithstanding the foregoing, you hereby acknowledge and agree that nothing in this Section creates any obligation or duty on the part of Orbridge to monitor, to make any decision or determination or to take any action in respect to any program participant on account of such individual's mental or physical condition, health or otherwise.

i. Travel Advisories and Warnings. It is the sole responsibility of each guest to stay informed about the most current international travel advisories and warnings by visiting the U. S. State Department's travel website at <http://www.travel.state.gov> or by contacting the U.S. State Department directly. In the event of an active State Department Travel Warning ("Warning") against travel to a program's specific destination location(s) and you elect to travel to the location(s) notwithstanding such Warning, you hereby agree, individually and on behalf of your marital community, heirs, estates, personal representatives, executors and assigns, to assume, and to defend, indemnify and hold Orbridge harmless from and against, all actual or potential personal injuries, death, property damage and other loss or casualty arising from or related to events that are the same or similar to those specified in the Warning.

j. Children. Orbridge welcomes the participation of children in its programs. However, in the event you do include your children or other minors for whom you serve as legal guardian (together, "Dependents") in your travel plans, you hereby acknowledge and agree that you are and shall be at all times solely responsible for their care, actions, safety and protection during the program and any extension(s). Should you have any questions whether a particular program or inclusion is suitable for your Dependent(s), please contact us and we will do our best to provide you with answers.

k. Baggage. Program rates include the price of two (2) pieces of policy-compliant baggage per person during the land or cruise portion of the program only unless specified in the itinerary. Please be advised that air carriers often impose restrictions or limitations on the number of pieces, size and weight of luggage and may reject or impose additional fees on luggage exceeding such limitations or restrictions. All such fees are your sole cost and responsibility. In addition and regardless of location or transportation modality, your baggage and personal effects are and shall at all times be at your sole responsibility and risk throughout the entire program. Please check with your international carrier for other baggage restrictions and limitations applicable to international flights.

l. Travel Documents. For U.S. citizens, valid passports are required for travel to foreign destinations and some countries require specific visas prior to entry. Please direct any questions in respect to visa requirements to Orbridge, which shall use commercially reasonable efforts to provide answers as a courtesy, provided that it shall remain your sole responsibility and obligation to obtain and verify that you have all required travel documents, including visas, for your nationality necessary and appropriate for the program location(s) and sufficient blank pages in your passport for visas and immigration stamps. Orbridge is not liable, and expressly disclaims all such liability, for any expenses or costs you may incur due to your prohibition or restriction from entering a country on the program itinerary or reentering the United States at the conclusion of the program.

m. Photos and Videos. Orbridge, its representatives and/or tour operators may, from time to time, make photographic or video recording(s) during a program, which may include images of you and/or your Dependent(s) (if any). For and in consideration of the benefits you enjoy and receive in connection with the program, you, individually and on behalf your Dependent(s), hereby agree and grant to Orbridge a limited, non-exclusive, irrevocable, worldwide, perpetual, royalty-free right, license and release, with right to sublicense, to exhibit, publish, display, and promote the photographs, images, visual depictions, and reproductions of you (together "Photos") recorded in digital or other format during the program for use by Orbridge for the limited purpose of promoting and marketing the services of Orbridge in such manner as Orbridge may elect in its sole discretion. Without limiting the generality of the foregoing, the license granted herein includes the right, without limitation, for Orbridge to reproduce the Photos in digital or other form, to edit such materials, and to publicly display, publish and/or distribute such reproductions on Orbridge's proprietary website and in such other digital media and print materials as Orbridge may elect.

n. Arbitration. Any controversy or claim arising out of or relating to any services or products offered or obtained through Orbridge, including without limitation, any claim related to bodily injury, death or property damage, shall be adjudicated and conclusively settled and resolved by binding arbitration in Seattle, Washington before a single arbitrator reasonably knowledgeable in travel services matters selected by Orbridge in its sole reasonable discretion in accordance with the rules of the American Arbitration Association then existing, and judgment on the arbitration award may be entered in any court having jurisdiction over the subject matter of the controversy.

o. Limitation of Liability. NONE OF (A) ORBRIDGE, (B) THE SPONSORING ENTITIES FOR WHOM ORBRIDGE DESIGNS PROGRAMS, OR (C) ANY OF THEIR RESPECTIVE EMPLOYEES, MEMBERS, MANAGERS, SHAREHOLDERS, OFFICERS OR DIRECTORS (COLLECTIVELY, THE "ORBRIDGE GROUP") OWN OR OPERATE ANY ENTITY THAT DOES OR WILL PROVIDE GOODS OR SERVICES FOR OR IN CONNECTION WITH YOUR PROGRAM. ORBRIDGE PURCHASES, WITHOUT LIMITATION, TRANSPORTATION, HOTEL AND OTHER LODGING ACCOMMODATIONS, FOOD, GROUND HANDLING AND OTHER SERVICES (TOGETHER "VENDOR SERVICES") FROM VARIOUS THIRD-PARTY SUPPLIERS ("VENDORS"). ALL OF WHOM ARE INDEPENDENT CONTRACTORS AND OVER WHOM THE ORBRIDGE GROUP HAS NO RIGHT OF CONTROL OR AUTHORITY. THE VENDOR SERVICES ARE PROVIDED "AS IS" WITHOUT WARRANTY OF ANY KIND BY THE ORBRIDGE GROUP. EXCEPT AS EXPRESSLY PROVIDED ABOVE, THE ORBRIDGE GROUP MAKES NO WARRANTIES OF ANY KIND WITH RESPECT TO THE PROGRAM, WHETHER EXPRESS OR IMPLIED, INCLUDING ANY IMPLIED WARRANTIES OF MERCHANTABILITY AND FITNESS FOR A PARTICULAR PURPOSE. THE ORBRIDGE GROUP SHALL NOT BE LIABLE FOR THE ACTS OR OMISSIONS OF ANY VENDOR OR OTHER THIRD PARTY, INCLUDING WITHOUT LIMITATION, ANY DAMAGE, DEATH, LOSS OR INJURY TO PERSON OR PROPERTY CAUSED, IN WHOLE OR IN PART, BY ANY VENDOR OR OTHER THIRD PARTY, NOR THE STANDARD OF CARE YOU RECEIVE IN CONNECTION WITH THE VENDOR SERVICES. IN NO EVENT SHALL THE ORBRIDGE GROUP BE LIABLE FOR ANY INDIRECT, INCIDENTAL, CONSEQUENTIAL, SPECIAL, PUNITIVE OR EXEMPLARY DAMAGES, INCLUDING, BUT NOT LIMITED TO, LOSS OF WAGES, SAVINGS OR CONSORTIUM, EVEN IF SUCH DAMAGES ARE FORESEEABLE AND WHETHER OR NOT THE ORBRIDGE GROUP HAS BEEN ADVISED OF THE POSSIBILITY THEREOF. THE ORBRIDGE GROUP'S MAXIMUM AGGREGATE LIABILITY, WHETHER ARISING IN TORT, EQUITY, LAW OR CONTRACT, SHALL NOT EXCEED THE TOTAL AMOUNT PAID OR PAYABLE BY YOU TO ORBRIDGE IN CONNECTION WITH THE PROGRAM AT ISSUE. The limitations set forth in this Section shall not apply where prohibited by law, but instead shall be interpreted to give effect and enforced to the maximum allowable extent.

p. Force Majeure. In addition and without limitation, the Orbridge Group shall not be liable for any injury, loss, death, inconvenience, delay or damage to personal property in connection with or resulting from acts of God, illness, disease, acts of war, riot, civil unrest, insurrection or revolt, animals, strikes or other labor activities, criminal or terrorist activities of any kind, overbooking or downgrading of services, food poisoning, mechanical or other failure of aircraft, vessels or other means of transportation or for failure of timely arrival or departure.

q. Other. Dates, program details and costs, although given in good faith and based on tariffs, exchange rates and other information current at the time of printing, are subject to change at any time. While we do not anticipate material revisions of the itinerary or its included features, we do reserve the right to substitute accommodations or modes of transportation and to make any changes in the itinerary Orbridge, in its sole discretion, deems necessary and in that case any additional expense or cost will be paid by the individual guest. Your baggage and personal effects are your sole responsibility at all times. There are many inherent risks in travel, which can lead to illness, injury, or even death. These risks are increased by the fact that some of our programs take place in remote locations, far from medical facilities. You acknowledge and agree to assume all such risks associated with participating in this program. The University of Rochester receives a modest per-person commission from its tour operator for this travel program. All funds received support the University's general operating expenses and its alumni programs. Depending on the number of participants, the tour operator may offer the University a complimentary tour package to faculty or staff accompanying a tour. Occasionally, the tour operator may invite University staff on familiarization tours to provide them firsthand experience with the products and services offered by the tour operator.

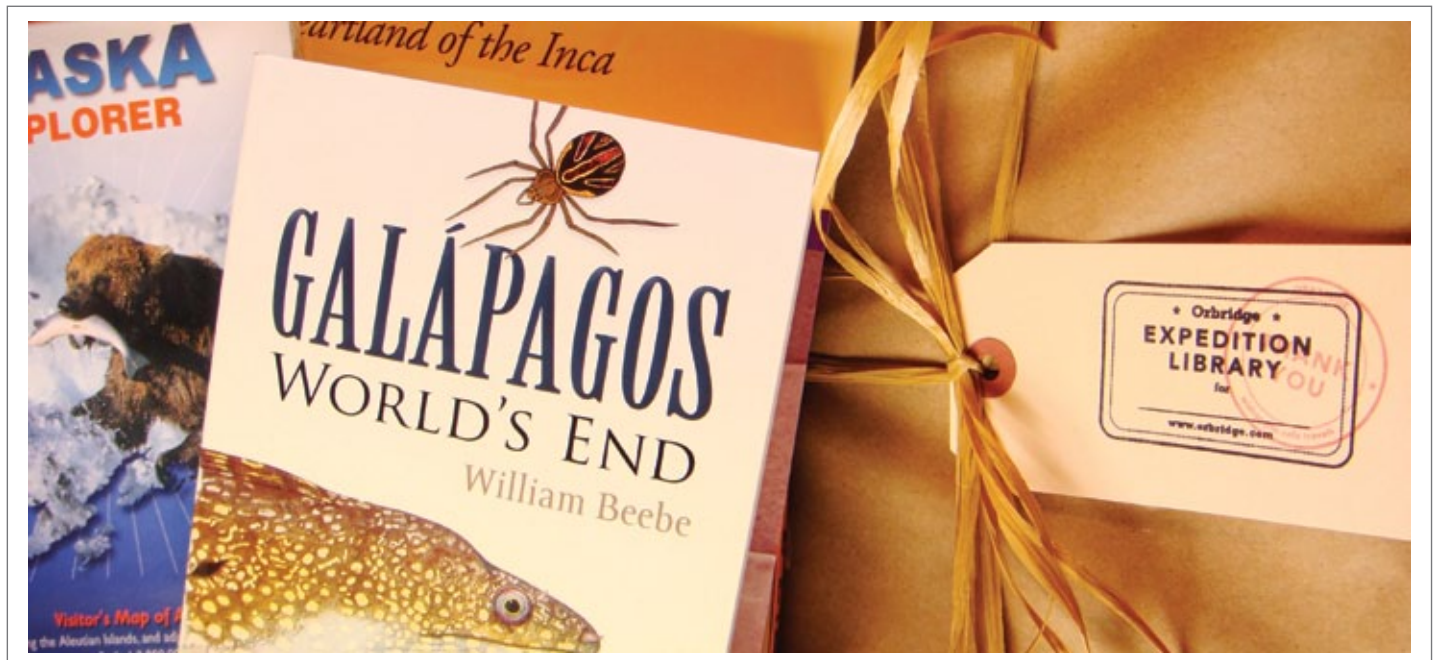
Acceptance of Contract. ANY PAYMENT TO ORBRIDGE, INCLUDING BUT NOT LIMITED TO DEPOSITS, CONSTITUTES YOUR ACKNOWLEDGEMENT OF AND AGREEMENT TO THE TERMS AND CONDITIONS SET FORTH ABOVE AND IN MORE SPECIFIC TOUR DOCUMENTS.

© 2011 ORBRIDGE LLC. All rights reserved. ORBRIDGE, ORBRIDGE DESTINATION SPECIALISTS, ORBRIDGE GROUP, and OBR are service marks owned by Orbridge LLC. The service marks and trademarks of any supplier appearing in these materials are owned by each respective company. WAST# 602828994 CAST# 2098750-40

SPECIAL OFFER WHEN YOU BOOK BY JULY 22, 2011

Orbridge Expedition Library

OBR



It turns out the most important thing to remember to bring on your Galapagos expedition is not a pair of binoculars or good walking shoes. It's curiosity. On your journey, every experience is more significant and simply more wonderful when your imagination is enlivened by the learning and experiences of explorers who came before you.

That's why Orbridge creates a unique "Library" for each of its destinations—an assortment of maps, videos, books, field guides, and tokens for your journey, selected by its discriminating Expedition Leaders—and offers it, free, to guests who book early.

Place your deposit on or before July 22, 2011, and your Orbridge Expedition Library will be sent upon receipt of final payment, FREE OF CHARGE.

(If you would like to purchase the Expedition Library, please call for pricing and details.)