


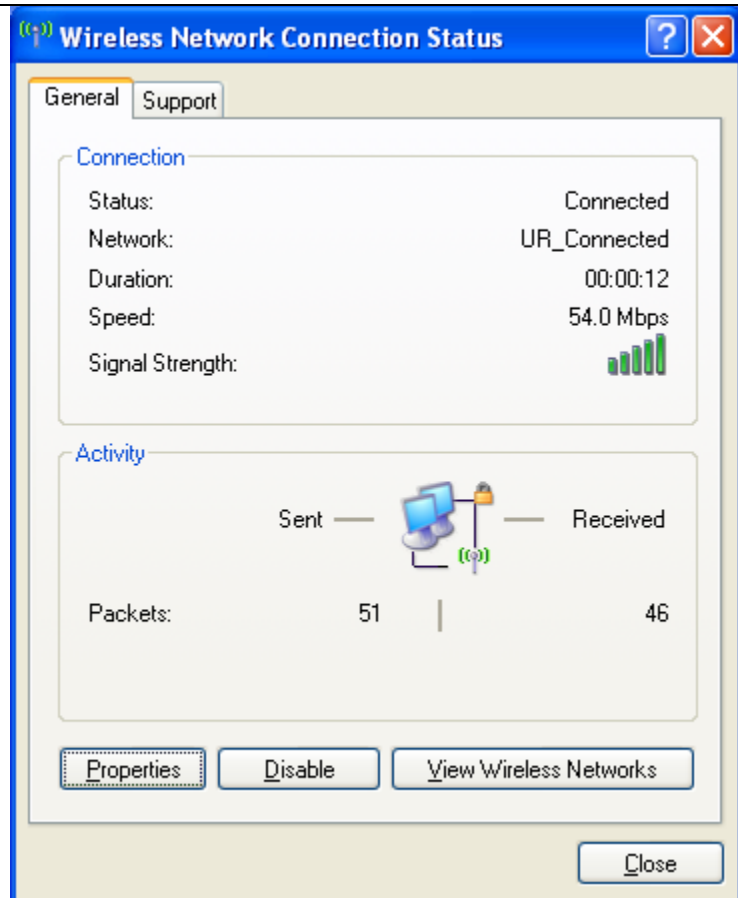
## Windows XP Configuration for UR\_RC\_InternalSecure



You should see something similar to this from the lower right portion of your desktop

Before Starting, ensure that you have wireless enabled on your computer.

To begin the configuration, Single click  from the lower right portion of your desktop

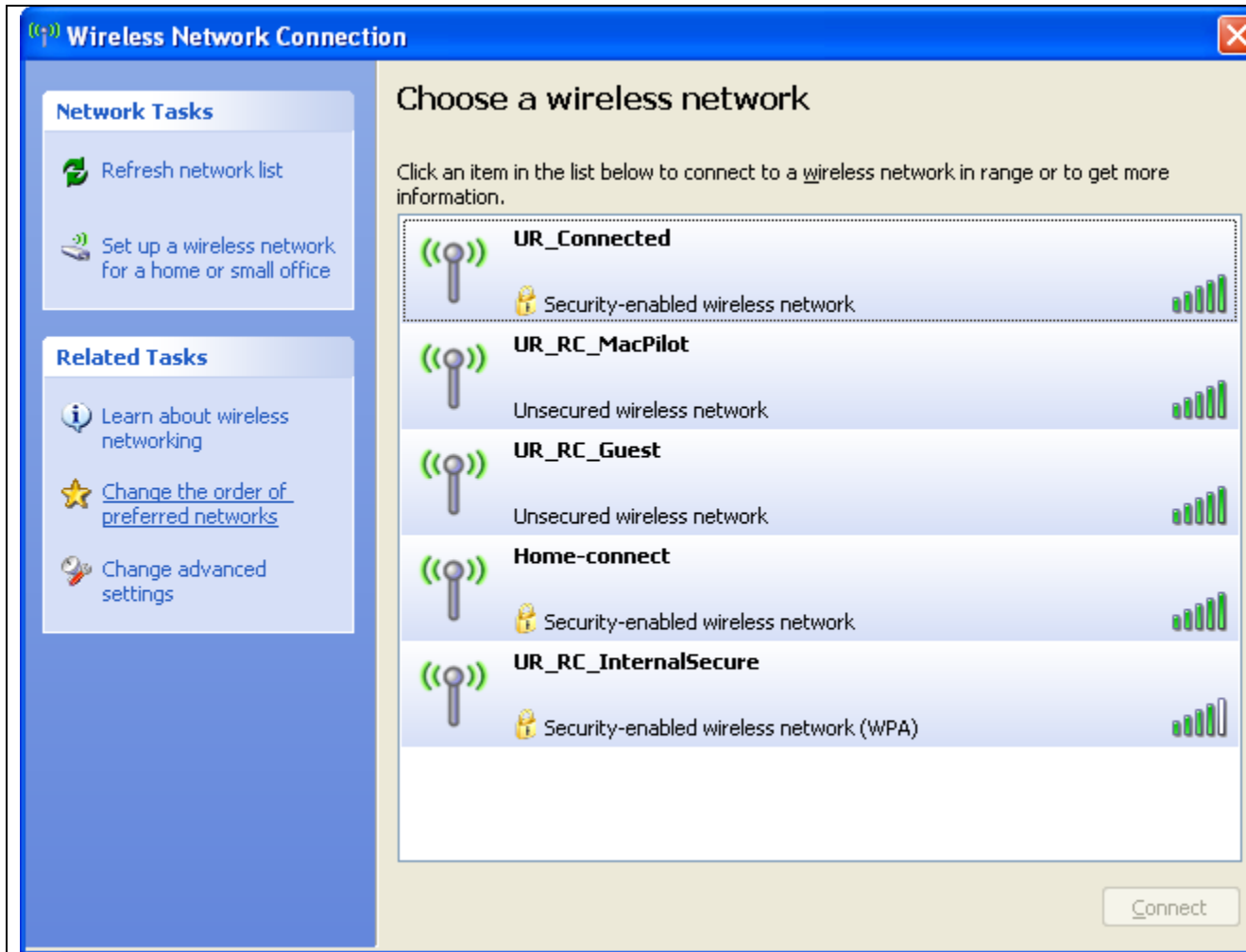


If Prompted with the Wireless Network Connection Status screen Click the



to see all of the wireless networks that are broadcasted - otherwise proceed to the next page of the instructions

## Windows XP Configuration for UR\_RC\_InternalSecure




Within the Wireless Network Connection Double click on UR\_RC\_InternalSecure network identifier

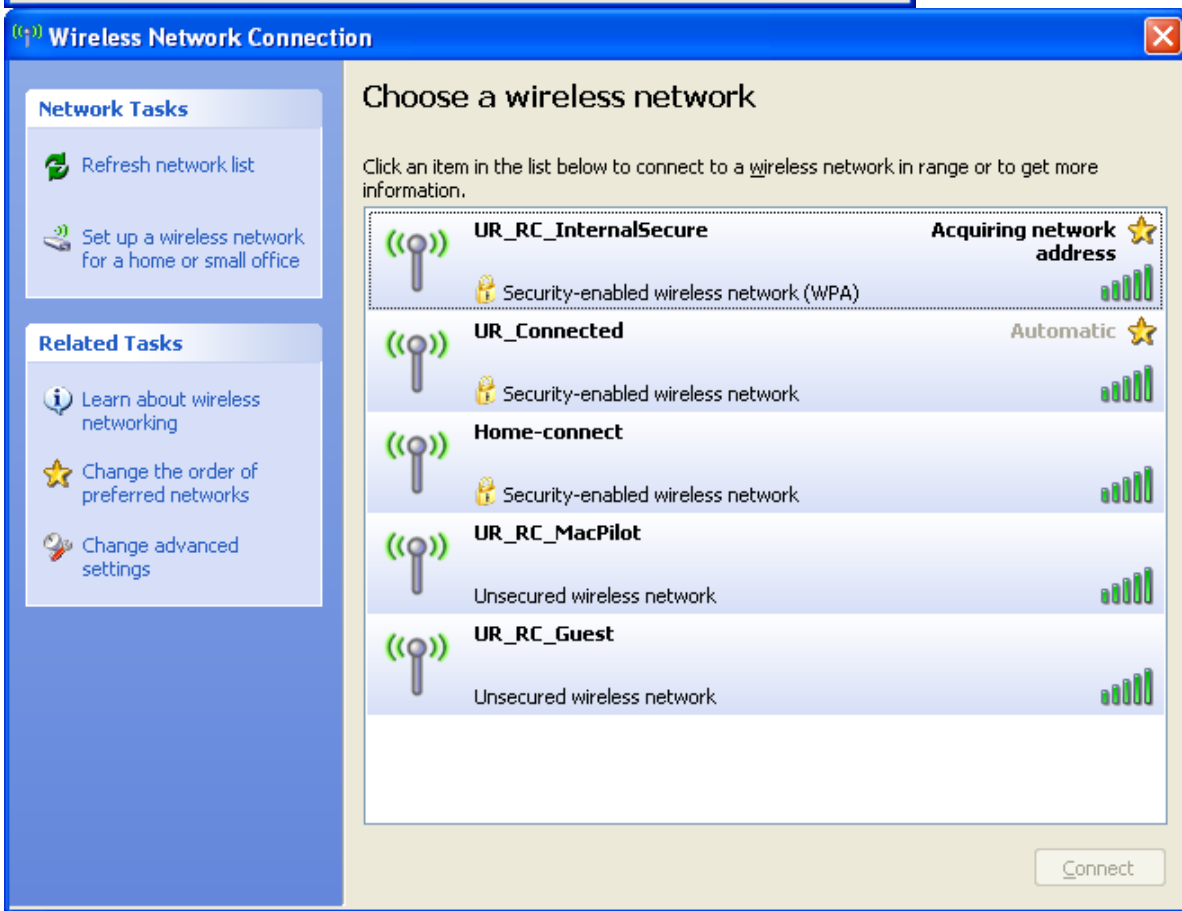
# Windows XP Configuration for UR\_RC\_InternalSecure



Within the Wireless Network Connection pop-up

For Network key, enter "URWireless" (case sensitive). Then repeat for "Confirm network key"

Click 



Wait, as it may take a few moments while acquiring your network address.

## Windows XP Configuration for UR\_RC\_InternalSecure

The screenshot shows the 'Wireless Network Connection' window in Windows XP. The window title is 'Wireless Network Connection' with a close button. On the left, there are two task lists: 'Network Tasks' and 'Related Tasks'. The main area is titled 'Choose a wireless network' and contains a list of available networks. The first network, 'UR\_RC\_InternalSecure', is highlighted and marked as 'Connected' with a yellow star. Below it are 'UR\_Connected' (Automatic), 'UR\_RC\_MacPilot' (Unsecured), 'UR\_RC\_Guest' (Unsecured), 'shine' (Security-enabled), and 'Home-connect' (Security-enabled). Each network entry includes a signal strength indicator. A 'Disconnect' button is located at the bottom right of the network list area.

**Network Tasks**

- Refresh network list
- Set up a wireless network for a home or small office

**Related Tasks**

- Learn about wireless networking
- Change the order of preferred networks
- Change advanced settings

**Choose a wireless network**

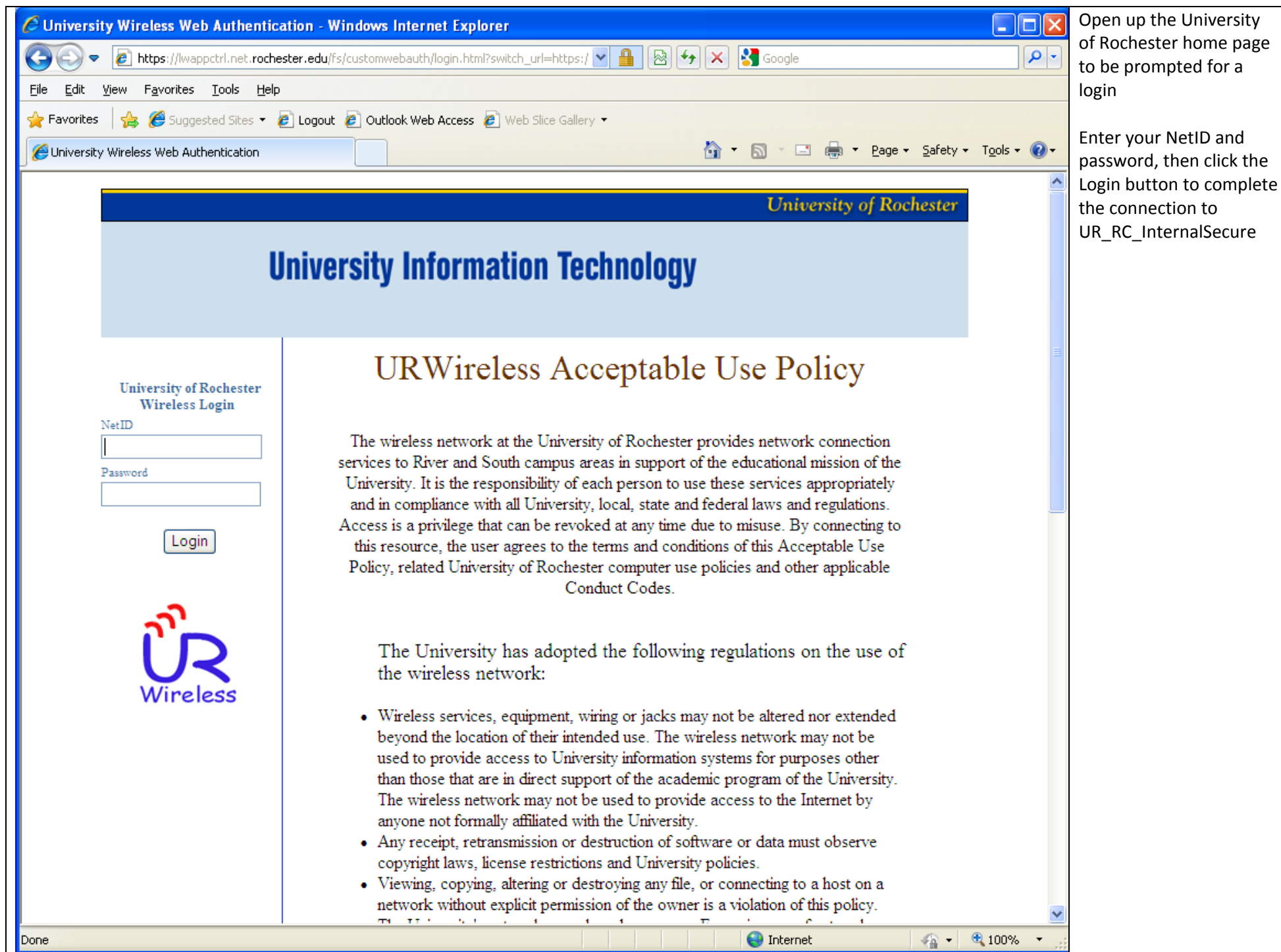
Click an item in the list below to connect to a wireless network in range or to get more information.

Network Name	Security	Status	Signal Strength
UR_RC_InternalSecure	Security-enabled wireless network (WPA)	Connected	Full
UR_Connected	Security-enabled wireless network	Automatic	Full
UR_RC_MacPilot	Unsecured wireless network	Available	Full
UR_RC_Guest	Unsecured wireless network	Available	Full
shine	Security-enabled wireless network	Available	Medium
Home-connect	Security-enabled wireless network	Available	Medium

Disconnect

You will be connected

## Windows XP Configuration for UR\_RC\_InternalSecure



University of Rochester  
University Information Technology

### URWireless Acceptable Use Policy

The wireless network at the University of Rochester provides network connection services to River and South campus areas in support of the educational mission of the University. It is the responsibility of each person to use these services appropriately and in compliance with all University, local, state and federal laws and regulations. Access is a privilege that can be revoked at any time due to misuse. By connecting to this resource, the user agrees to the terms and conditions of this Acceptable Use Policy, related University of Rochester computer use policies and other applicable Conduct Codes.

The University has adopted the following regulations on the use of the wireless network:

- Wireless services, equipment, wiring or jacks may not be altered nor extended beyond the location of their intended use. The wireless network may not be used to provide access to University information systems for purposes other than those that are in direct support of the academic program of the University. The wireless network may not be used to provide access to the Internet by anyone not formally affiliated with the University.
- Any receipt, retransmission or destruction of software or data must observe copyright laws, license restrictions and University policies.
- Viewing, copying, altering or destroying any file, or connecting to a host on a network without explicit permission of the owner is a violation of this policy.

University of Rochester  
Wireless Login

NetID

Password

Login

UR  
Wireless

Done Internet 100%

Open up the University of Rochester home page to be prompted for a login

Enter your NetID and password, then click the Login button to complete the connection to UR\_RC\_InternalSecure

## Windows XP Configuration for UR\_RC\_InternalSecure

Note: Please ensure that you have all of the latest updates from [Microsoft Update](#). If you are not running the most up-to-date windows operating system patches, the menus you see may not match the ones referenced below. Additionally, 3rd party software can also alter the menus you may see, please contact the UnivIT Helpdesk for assistance if needed.

Note: These instructions assume the use of a wireless network card that is managed by the Windows XP "Wireless Zero Configuration Service." If your network card cannot be managed by Windows, please refer to the documentation that came from the manufacturer of your network card to determine if and how to connect to WPA2 networks.