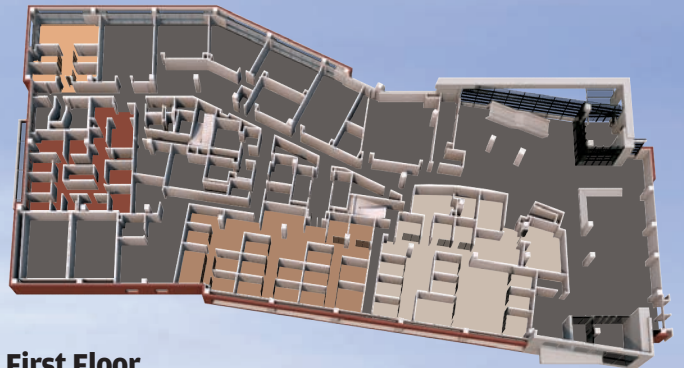


Under One Roof

Rochester researchers in the new Clinical and Translational Science Building aim to accelerate the clinical applications of biomedical research.

THE NEW 200,000-SQUARE-FOOT CLINICAL AND Translational Science Building brings together scientists, physicians, nurses, researchers, and other staff who were formerly scattered across the University. Scheduled for dedication in April, the new building will be home to the Clinical and Translational Science Institute, which in 2006 received one of the nation's first NIH grants designed to help accelerate the application of the discoveries of medical science. The new facility shares an atrium with the adjacent School of Nursing, symbolizing the close connection between clinical research and the School of Medicine and Dentistry and the School of Nursing.

—KATHLEEN MCGARVEY

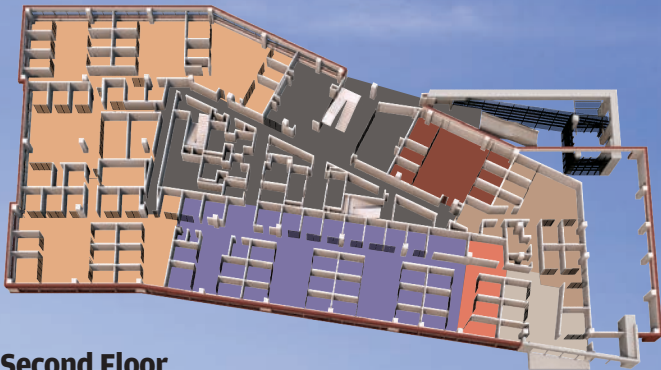


First Floor

- Bioinformatics Program** Assists with the design and management of databases used in clinical and translational research and the education of professionals in their use.
- Office for Human Research Protection/Research Subjects Review Board** Responsible for ensuring that the rights and welfare of participants in medical research are adequately protected.
- CTSI Program Offices** Operates programs and provides services to support and train clinical and translational investigators.
- Clinical Research Suite** Provides dedicated space for health researchers to conduct safe, controlled, outpatient studies of children and adults.

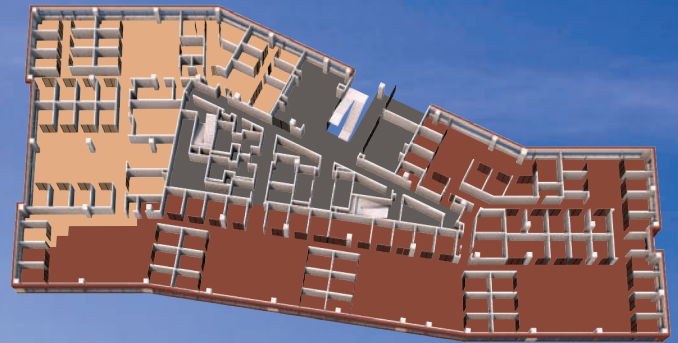


GREEN DESIGN: The new facility is designed as the University's first building to be certified according to the Leadership in Energy and Environmental Design (LEED) guidelines.



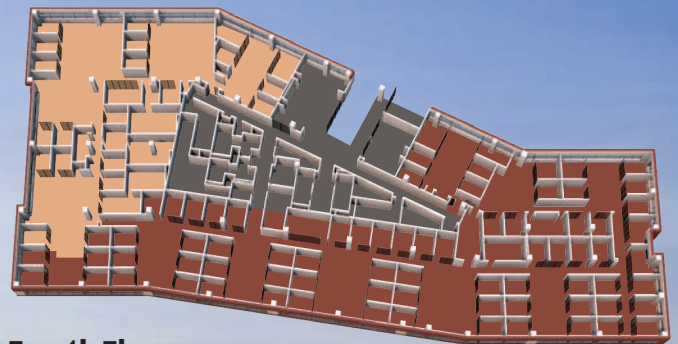
Second Floor

- Center for Human Experimental Therapeutics** Conducts hypothesis-driven initial investigations of new therapies for human diseases.
- Muscle Study Group** Carries out controlled clinical trials and other research for muscle and neuromuscular diseases.
- Emergency Medicine** Studies emergency care issues, with a primary emphasis on traumatic brain injury, geriatric emergency care, and prehospital medicine.
- Seychelles Child Development Study** Studies the risks and benefits of fish consumption on childhood development.
- Cancer Survival** Aims to enhance quality of life for cancer survivors through efforts to improve treatments and minimize lasting effects of radiation therapy, chemotherapy, and surgery.
- Cancer Control** Leads hundreds of researchers in 22 affiliated sites nationwide in developing ways to minimize or eliminate side effects of cancer treatment.



Third Floor

- Pediatrics** The Division of General Pediatrics conducts health services research with a focus on vulnerable children.
- Community and Preventive Medicine** Promotes and supports public health through research and outreach.



Fourth Floor

- Heart Research Follow-Up Program** Organizes and conducts cardiovascular research studies to improve diagnosis and management of patients with heart disease.
- Biostatistics** Conducts collaborative and methodologic research and provides education and assistance in study design and analysis and computational biology.



New Neighbor

The CTSB is on Rochester's Medical Center campus.

