

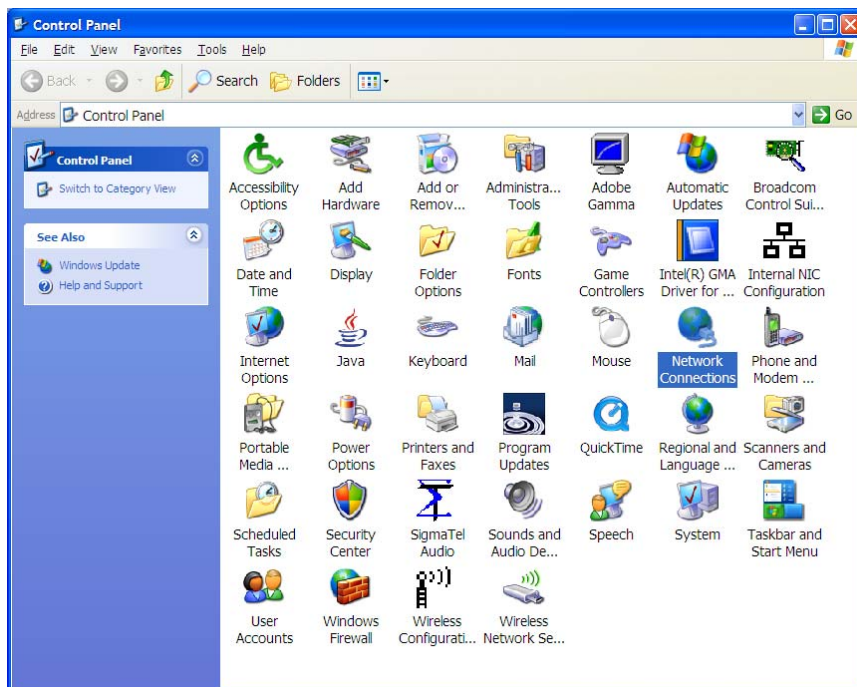
This guide describes the steps to set up Wireless Pharos Printing on your personal laptop computer. After installation you will be able to print wirelessly to the University's pay-for-print system. Windows wireless printing will work on computers running Windows XP or Vista. If you have any questions please contact the IT Helpdesk on 5-2000.

**Please Note:**

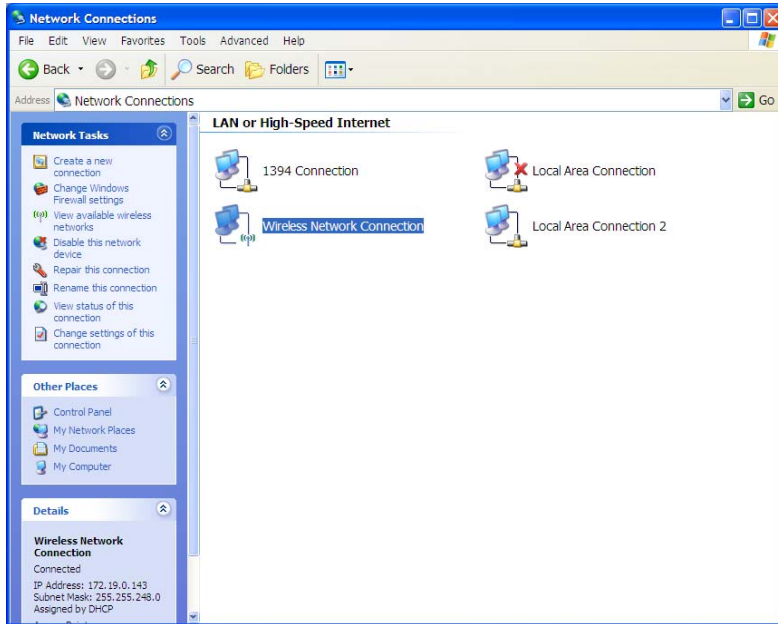
**You must be logged in to a Windows account with Administrator privileges to complete this installation.**

Follow these steps:

1. Open Control Panel
2. Open Network Connections.



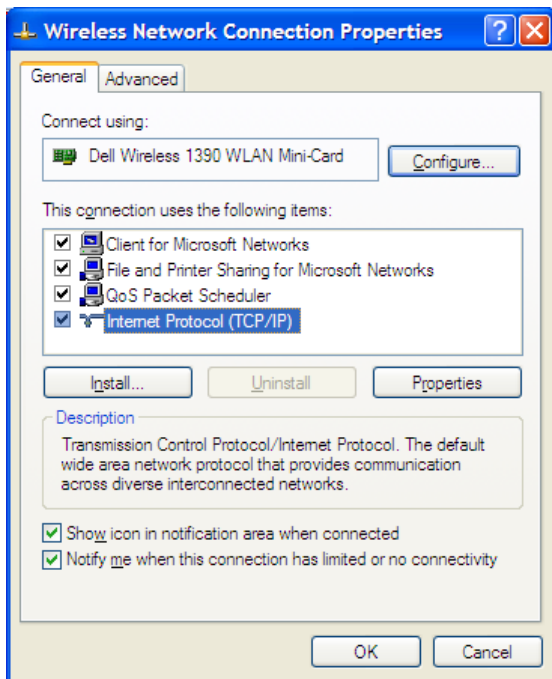
3. Right click and select properties on the connection you are using to connect wirelessly.



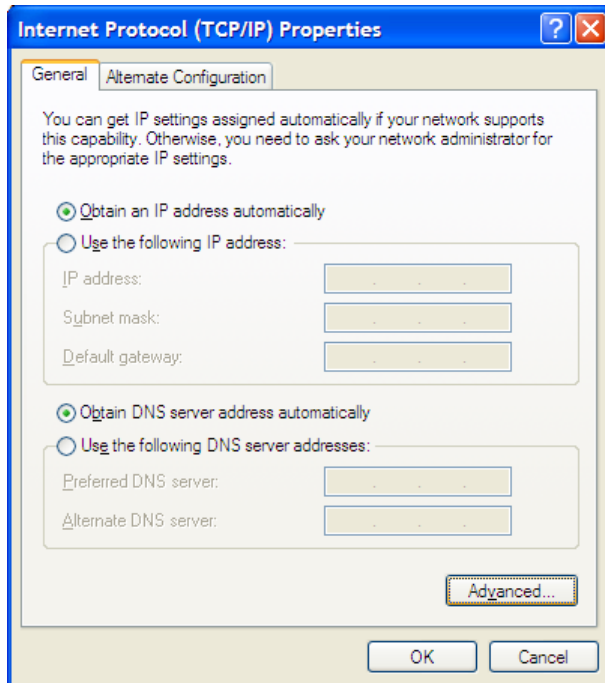
Windows Vista users:  
In Vista this is found by:

Control Panel >  
Network & Sharing Center >  
Manage Network Connections

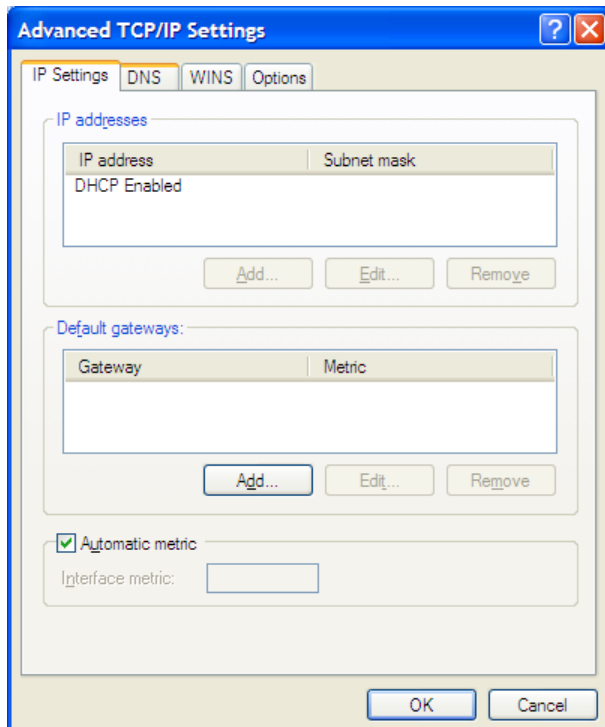
4. Select Internet Protocol (TCP/IP), then click Properties.



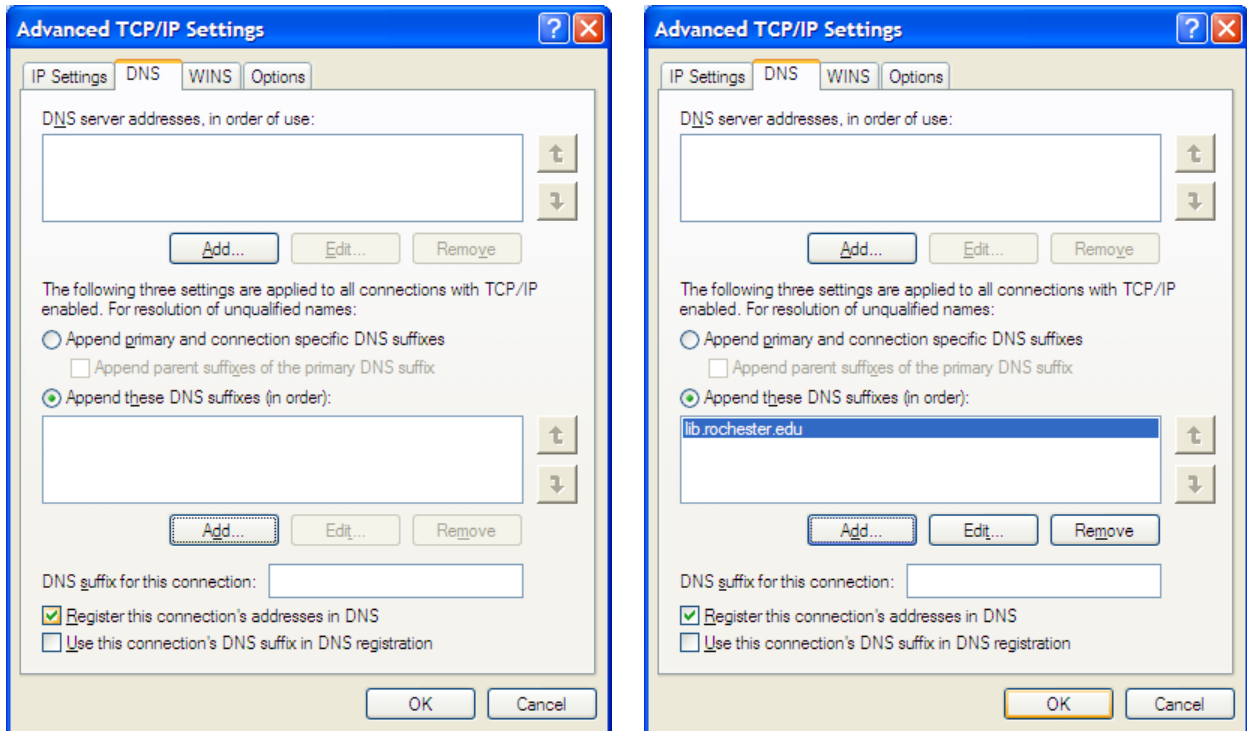
## 5. Click Advanced button



## 6. Select DNS tab

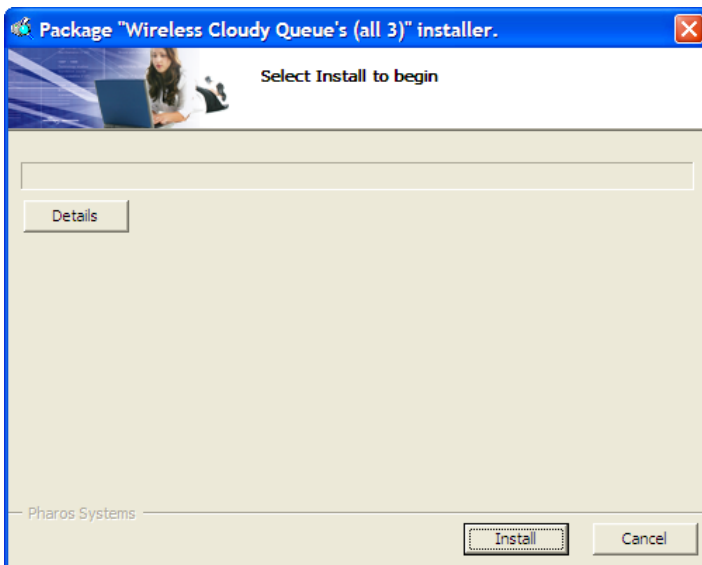


7. In the bottom pane, add the following DNS suffix: **lib.rochester.edu**

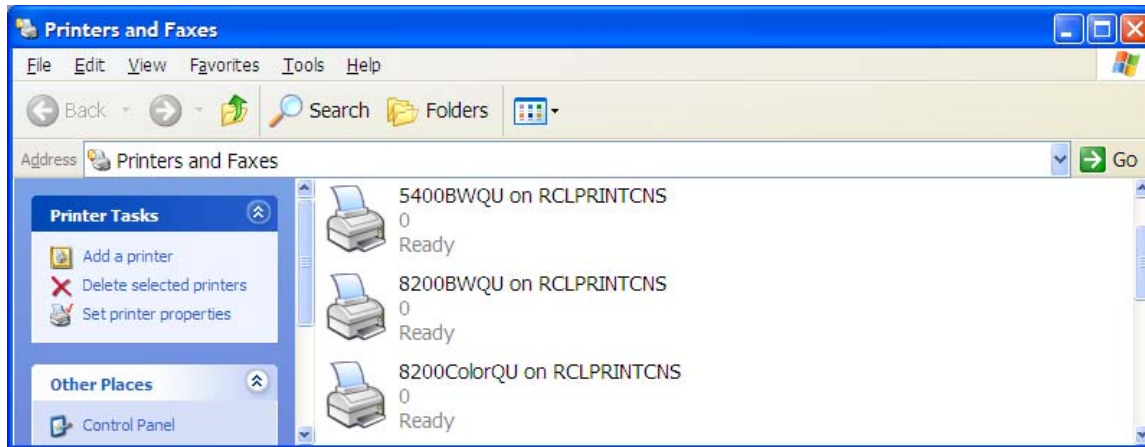


8. Click OK and close all the dialog boxes.

9. Run the included installer file (WirelessPrintQueues.exe)



This will install 3 printers on your system



**Do NOT rename these printers or printing will not work.**

Now you can print as normal, selecting whichever printer you desire when you go to print your file. Please see page 6 for printer list.

As within the IT public labs, you will be prompted to name your print job.

Due to current limitations of the wireless network, you will not receive a cost confirmation popup on your computer.

Please pay attention to the cost on the release station when you select your job, before you click on print.

When a print job is submitted to a particular queue, it can be printed from several printers around campus. The 3 print queues can be released in the following locations;

**5400BWQU** will print to any of the Phaser 5400 & 5500 black & white printers

Carlson Library - 1st floor  
Harkness - Basement Grad lab  
IT Center  
Multimedia Library

**8200BWQU** will print to any of the Phaser 8200, 8400 & 8560 printers in **black & white**

Art Library  
Business and Government Information Library  
Carlson Library – 2<sup>nd</sup> & 3<sup>rd</sup> floors  
CWP Lab (Rush Rhees Rm. 304)  
Gavett - Rm. 244  
Goergen – Rm. 102  
Goergen – Rm. 431  
Harkness - Rm. 114  
Hylan - Rm. 303  
Hylan - Rm. 307  
POA Library  
Rush Rhees Library - Reference area

**8200ColorQU** will print to any of the Phaser 8200, 8400 & 8560 printers in **color**

Art Library  
Business and Government Information Library  
Carlson Library - all floors  
CWP Lab (Rush Rhees Rm. 304)  
Gavett - Rm. 244  
Goergen – Rm. 102  
Goergen – Rm. 431  
Harkness - Rm. 114  
Hylan - Rm. 303  
Hylan - Rm. 307  
IT Center  
POA Library  
Rush Rhees Library - Reference area

If you have any questions or comments, please visit the UR Printing web site at:

<http://www.rochester.edu/printing/>