

University of Rochester Fact Book

2002-03

Contents

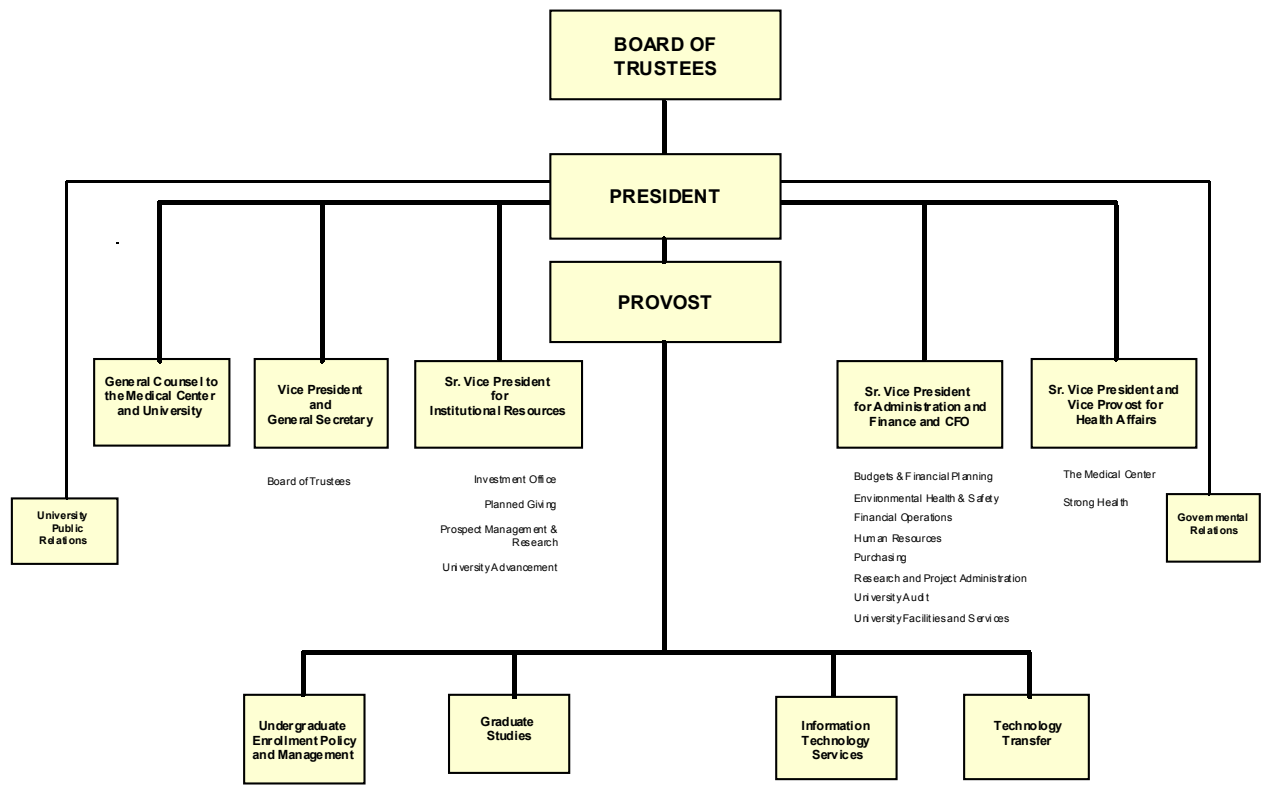
<u>Subject</u>	<u>Time Covered</u>	<u>Page</u>
Organization	1 Year	2
Space	10 Years	3
Degrees Conferred	10 Years	4
Degrees by Major	3 Years	5
Certificates	3 Years	10
Admissions	10 Years	11
Enrollment by School	10 Years	12
Enrollment, Gender and Ethnicity	1 Year	13
Enrollment, Geographic Origins	1 Year	14
Enrollment, Majors	3 Years	15
Courses, Credit Hours	3 Years	21
Courses, Section Size	1 Year	24
Faculty by School	10 Years	28
Faculty by Department	3 Years	29
Staff	1 Year	31

Office of the Provost
Institutional Research
205 Wallis Hall
Rochester, NY 14627-0021
585-275-2806
e-mail: sallyann.hart@rochester.edu

©2003 University of Rochester

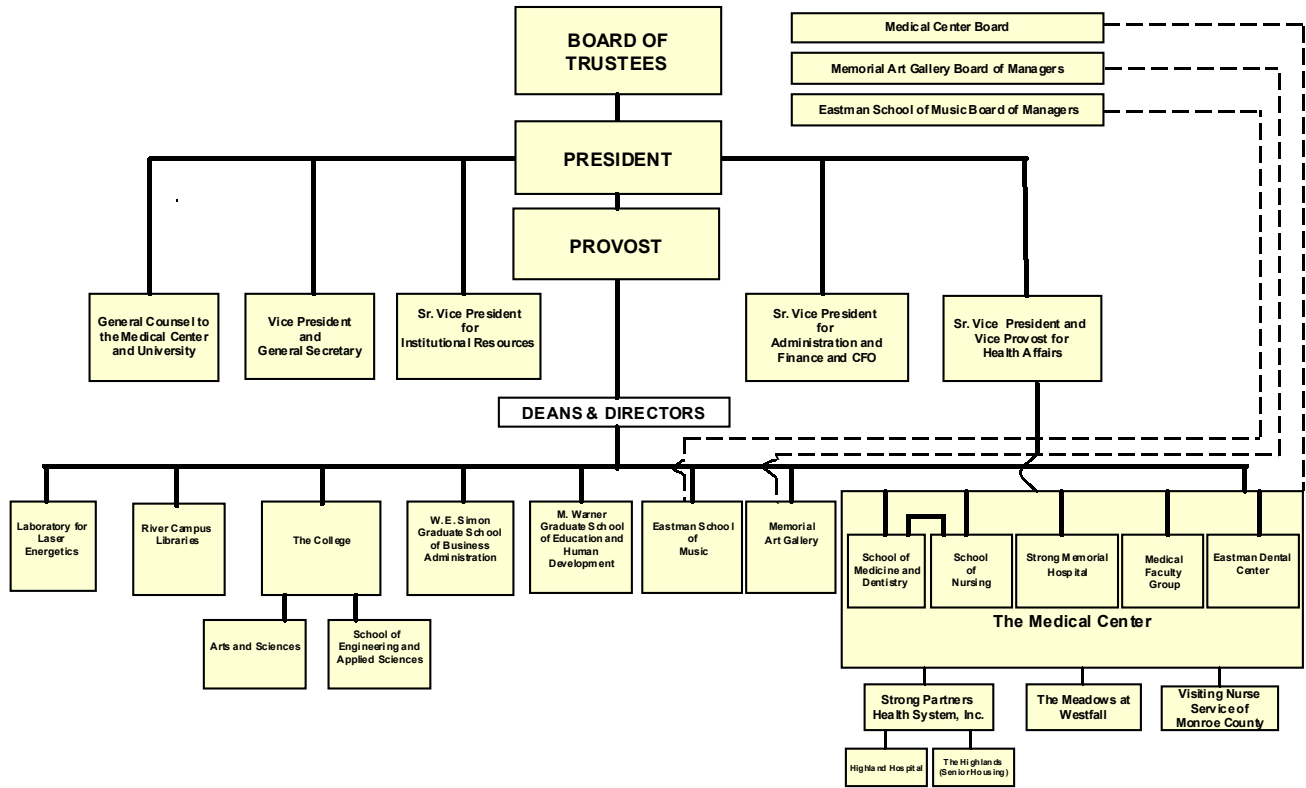


UNIVERSITY OF ROCHESTER
Central Administrative and Support Services



Status as of 09/02
Provost's Office, Institutional Research

UNIVERSITY OF ROCHESTER
Programs and Divisions



Organization Chart for 2002-03

for current Organization Charts see: <http://www.rochester.edu/news/organization/program.html>

Status as of 09/02
Provost's Office, Institutional Research

UNIVERSITY OF ROCHESTER
Size of Campus

	1993-94	1994-95	1995-96	1996-97	1997-98	1998-99	1999-2000	2000-01	2001-02	2002-03
Campus	Buildings	Buildings	Buildings	Buildings	Buildings	Buildings	Buildings	Buildings	Buildings	Buildings
River Campus	61	61	61	55	54	54	54	55	55	55
Medical Center	19	19	21	11	11	12	15	15	18	18
South Campus	37	37	37	55	55	55	55	55	55	59
Eastman School of Music	9	9	8	8	8	8	8	8	9	10
Mt. Hope Campus*	7	7	8	10	10	10	10	10	10	8
Off Campus*	-	-	-	5	5	5	5	5	6	2
UNIVERSITY TOTAL	133	133	135	144	143	144	147	148	153	152

	1993-94	1994-95	1995-96	1996-97	1997-98	1998-99	1999-2000	2000-01	2001-02	2002-03
Campus	Gross Sq. Ft.	Gross Sq. Ft.	Gross Sq. Ft.	Gross Sq. Ft.	Gross Sq. Ft.	Gross Sq. Ft.	Gross Sq. Ft.	Gross Sq. Ft.	Gross Sq. Ft.	Gross Sq. Ft.
River Campus	2,649,830	2,649,830	2,721,764	2,701,989	2,736,853	2,732,791	2,797,970	3,476,917	3,559,028	3,545,144
Medical Center	3,075,168	3,075,168	3,808,231	3,568,415	3,622,862	3,671,545	3,927,449	4,713,086	4,976,951	4,838,345
South Campus	628,400	628,400	648,034	900,669	919,177	919,177	913,289	1,067,530	1,094,888	1,111,007
Eastman School of Music	441,089	441,089	441,395	441,395	443,011	443,011	443,011	530,729	540,161	667,372
Mt. Hope Campus*	122,939	122,939	123,094	134,697	189,910	189,910	170,124	194,971	202,918	198,379
Off Campus*	-	-	-	20,907	20,907	20,907	20,754	22,279	25,623	4,087
UNIVERSITY TOTAL	6,917,426	6,917,426	7,742,518	7,768,072	7,932,720	7,977,341	8,272,597	10,005,512	10,399,569	10,364,334

Campus Inclusions (2002-03 definitions):

River Campus is the primary campus for The College, Simon School (Graduate Business) and Warner School (Graduate Education).

Medical Center reports all buildings including Annex, Helen Wood Hall, School of Medicine and Dentistry, Strong Memorial Hospital, Ambulatory Care Facility, Parking Garage, Goler House, Central Utilities, Eastman Dental Center, Kornberg Medical Research, Levine Pavillion, Autoclave Bldg.

South Campus includes Nuclear Structure Research Laboratory, Laboratory for Laser Energetics, Center for Optoelectronics and Imaging, River Road Buildings, Graduate Living Center, University Park, Whipple Park, Intercampus Drive.

Eastman Campus includes Eastman buildings, Eastman Place, Memorial Art Gallery and Cutler Union.

Mt. Hope Includes Towne House, 575, 590, 630, 668, 685 & 692 Mt. Hope Ave., Mail Services Building and Mt. Hope Professional Building.

Buildings Off Campus are Mees Observatory, Gannett House.

*Mt. Hope Campus and Off Campus data were combined and reported as "Miscellaneous" prior to 1996-97

Source: University Facilities

UNIVERSITY OF ROCHESTER

Degrees Conferred

Bachelors

	1992-93	1993-94	1994-95	1995-96	1996-97	1997-98	1998-99	1999-00	2000-01	2001-02
Arts & Sciences	860	916	914	930	840	903	852	842	750	778
Engineering & Applied Sciences	128	143	150	146	137	95	104	106	95	135
The College Subtotal	988	1,059	1,064	1,076	977	998	956	948	845	913
University College	2	2	1	2	0	1	0	0	1	0
Eastman School of Music	90	97	109	97	102	99	119	101	90	121
School of Nursing	57	82	79	93	85	101	64	65	57	60
University Total	1,137	1,240	1,253	1,268	1,164	1,199	1,139	1,114	993	1,094

Masters

	1992-93	1993-94	1994-95	1995-96	1996-97	1997-98	1998-99	1999-00	2000-01	2001-02
Arts & Sciences	181	181	182	135	177	155	128	147	126	99
Engineering & Applied Sciences	56	70	82	72	79	58	53	59	57	67
The College Subtotal	237	251	264	207	256	213	181	206	183	166
Simon Graduate School of Business	408	380	362	401	408	427	470	489	434	421
Warner Graduate School of Education & Human Development	101	79	84	73	84	96	63	55	53	61
Eastman School of Music	83	92	73	107	80	97	96	83	87	92
School of Medicine & Dentistry	67	74	66	65	66	82	79	74	84	61
School of Nursing	61	58	73	61	66	67	52	41	49	30
University Total	957	934	922	914	960	982	941	948	890	831

Doctorates

	1992-93	1993-94	1994-95	1995-96	1996-97	1997-98	1998-99	1999-00	2000-01	2001-02
Arts & Sciences	104	117	119	130	98	105	79	95	76	67
Engineering & Applied Sciences	36	38	25	39	31	28	31	30	30	16
The College Subtotal	140	155	144	169	129	133	110	125	106	83
Simon Graduate School of Business	8	7	5	5	7	7	2	4	3	7
Warner Graduate School of Education & Human Development	18	14	13	15	8	12	4	7	14	9
Eastman School of Music	26	27	35	26	29	26	26	36	24	44
School of Medicine & Dentistry	115	128	135	137	123	143	138	136	130	147
<i>Subtotal Doctorates</i>	<i>27</i>	<i>31</i>	<i>40</i>	<i>42</i>	<i>31</i>	<i>39</i>	<i>39</i>	<i>34</i>	<i>45</i>	<i>38</i>
<i>Subtotal MD's</i>	<i>88</i>	<i>97</i>	<i>95</i>	<i>95</i>	<i>92</i>	<i>104</i>	<i>99</i>	<i>102</i>	<i>85</i>	<i>109</i>
School of Nursing	5	2	5	2	3	3	5	5	4	4
University Total	312	333	337	354	299	324	285	313	281	294

All Degrees

	1992-93	1993-94	1994-95	1995-96	1996-97	1997-98	1998-99	1999-00	2000-01	2001-02
Arts & Sciences	1,145	1,214	1,215	1,195	1,115	1,163	1,059	1,084	952	944
Engineering & Applied Sciences	220	251	257	257	247	181	188	195	182	218
The College Subtotal	1,365	1,465	1,472	1,452	1,362	1,344	1,247	1,279	1,134	1,162
Simon Graduate School of Business	416	387	367	406	415	434	472	493	437	428
Warner Graduate School of Education & Human Development	119	93	97	88	92	108	67	62	67	70
University College	2	2	1	2	0	1	0	0	1	0
Eastman School of Music	199	216	217	230	211	222	241	220	201	257
School of Medicine & Dentistry	182	202	201	202	189	225	217	210	214	208
School of Nursing	123	142	157	156	154	171	121	111	110	94
University Total	2,406	2,507	2,512	2,536	2,423	2,505	2,365	2,375	2,164	2,219

Source: Student Information System

UNIVERSITY OF ROCHESTER
Degrees Conferred - Undergraduate Majors Completed
 By School, Double Majors Counted Twice*

	1999-00	2000-01	2001-02
THE COLLEGE			
Arts & Sciences			
American Sign Language	9	7	8
Anthropology	10	10	12
Art & Art History	12	15	11
Art History	6	9	7
Studio Arts	6	6	4
Biological Sciences	102	73	79
Biochemistry	18	13	7
Cell & Development	14	6	8
Ecology & Evol Biol	11	1	8
Microbiology	26	20	15
Molecular Genetics	18	4	13
Neuroscience	15	29	28
Biology	63	56	45
Brain & Cognitive Science	21	16	21
Chemistry	21	15	20
Clinical & Social Psychology	121	115	128
Cognitive Science	8	3	2
Computer Science	29	32	30
Earth & Environmental Sciences	23	17	12
Biology-Geology	2	3	2
Environmental Sciences	12	10	4
Environmental Studies	5	3	5
Geological Sciences	4	1	1
Economics	127	123	142
English	51	42	54
Film Studies	17	20	15
Film and Media Studies	0	3	15
Film Studies	17	17	0
Health & Society	57	39	35
History	57	54	62
Interdepartmental	12	8	8
Linguistics	10	3	7
Mathematics	28	34	39
Applied Mathematics	3	2	2
Computer Science:Mathematics	1	2	0
Mathematics	24	28	36
Mathematics-Statistics	0	2	1
Modern Languages & Cultures	26	31	34
Comparative Literature	1	2	0
French	5	3	5
German	1	8	2
Japanese	3	6	8
Russian	2	5	5
Spanish	14	7	14
Music	8	6	3
Philosophy	10	14	12
Physics and Astronomy	19	15	21
Physics	15	11	18
Physics and Astronomy	4	4	3
Political Science	118	100	102
Religion & Classics	32	26	25
Classics	2	4	2
Religious Studies	30	22	23
Russian Studies	4	2	3
Statistics	5	6	8
Women's Studies	9	6	4
SUBTOTAL	1,009	888	942

UNIVERSITY OF ROCHESTER
Degrees Conferred - Undergraduate Majors Completed
 By School, Double Majors Counted Twice*

	1999-00	2000-01	2001-02
THE COLLEGE			
School of Engineering and Applied Sciences			
Biomedical Engineering	9	16	31
Chemical Engineering	22	28	34
Electrical Engineering	25	12	28
Engineering Science	2	0	0
Geomechanics	1	1	0
Interdepartmental Engineering	0	1	0
Mechanical Engineering	26	26	21
Optics	21	11	21
SUBTOTAL	106	95	135
THE COLLEGE SUBTOTAL	1,115	983	1,077
Eastman School of Music			
Applied Music	87	72	109
Composition	3	4	3
Jazz Studies & Contemporary Media	4	8	3
Music Education - General	4	3	1
Music Education - Instrumental	8	12	8
Music Education - Vocal	4	1	3
Music Theory	1	4	0
Musical Arts	0	0	1
SUBTOTAL	111	104	128
School of Nursing	65	57	60
University College			
Social Science	0	1	0
SUBTOTAL	0	1	0
TOTAL UNIVERSITY	1,291	1,145	1,265

*Totals on this table are greater than the total number of degrees conferred because double majors are reported here.
 The University awards the following Bachelor's Degrees: BA, BS, BM

Source: Student Information System

UNIVERSITY OF ROCHESTER
Degrees Conferred - Graduate Majors Completed
By School, Double Majors Counted Twice*

	1999-2000		2000-01		2001-02	
	Mast.	Doc.	Mast.	Doc.	Mast.	Doc.
THE COLLEGE - Arts and Sciences						
Biology	13	6	8	4	11	2
Brain & Cognitive Sciences	5	0	3	3	2	4
Chemistry	6	14	19	8	17	8
Clinical & Social Psychology	7	4	3	7	8	6
Computer Science	9	5	9	3	8	5
Earth & Environ Sciences (Geological)	2	3	8	0	4	3
Economics	24	15	12	16	12	9
English	13	8	11	9	7	3
History	2	5	1	5	1	6
Linguistics	0	1	0	1	0	0
Mathematics	3	4	4	1	5	1
Mathematics	3	4	4	1	4	1
Mathematics - Statistics	0	0	0	0	1	0
Modern Languages & Cultures	6	3	1	2	1	3
Comparative Literature	4	3	1	2	1	3
German	1	0	0	0	0	0
Spanish	1	0	0	0	0	0
Philosophy	5	2	4	2	2	1
Physics & Astronomy	14	17	27	8	13	7
Physics	14	15	27	8	13	6
Physics & Astronomy	0	2	0	0	0	1
Political Science	10	6	10	5	2	3
Public Policy Analysis	22	0	0	0	0	0
Visual and Cultural Studies	6	2	6	3	6	7
SUBTOTAL	147	95	126	77	99	68

THE COLLEGE - School of Engineering and Applied Sciences

Biomedical Engineering	3	0	4	1	10	1
Chemical Engineering	5	3	6	3	8	0
Electrical Engineering	17	10	15	7	22	3
Materials Science	6	2	5	9	2	2
Mechanical Engineering	18	6	11	3	14	5
Optics	10	9	16	7	11	5
SUBTOTAL	59	30	57	30	67	16

THE COLLEGE TOTAL

206	125	183	107	166	84
------------	------------	------------	------------	------------	-----------

Simon Graduate School of Business Administration

Master of Science	16	0	18	0	14	0
Business Administration	331	4	283	3	262	7
Business Admin. - Executive Development	53	0	53	0	50	0
Business Admin. - Bern, Switzerland	46	0	45	0	48	0
Business Admin. - Nijenrode, Netherlands	43	0	35	0	47	0
SUBTOTAL	489	4	434	3	421	7

UNIVERSITY OF ROCHESTER
Degrees Conferred - Graduate Majors Completed
By School, Double Majors Counted Twice*

	1999-2000		2000-01		2001-02	
	Mast.	Doc.	Mast.	Doc.	Mast.	Doc.

Warner Graduate School of Education and Human Development

Counseling & Human Devel, CounsTrack	3	1	1	0	4	0
Catholic School Admin	1	0	0	0	0	0
Counseling & Human Develop	5	1	10	2	6	1
Curriculum Elementary	10	0	10	0	8	0
Curriculum General	4	1	3	0	7	0
Curriculum Secondary English	1	0	6	0	5	0
Curriculum Secondary for Lang	1	0	3	0	3	0
Curriculum Secondary Math	2	0	1	0	0	0
Curriculum Secondary Science	5	0	3	0	6	0
Curriculum Secondary Soc Stud	5	0	3	0	3	0
Developmental Disorders	0	0	1	0	0	0
Education	0	0	0	2	0	0
Education Administration	0	2	2	3	2	1
Higher Education	5	1	2	2	4	2
Human Devel In Ed Contexts	1	1	0	2	0	2
Human Devel General	3	0	1	0	5	0
School Guidance	5	0	4	0	1	0
Teaching Curriculum	0	0	0	1	0	2
Teaching in English	1	0	0	0	1	0
Teaching in History	0	0	3	0	2	0
Teaching Curriculum & Change	1	0	0	2	0	1
TESOL	2	0	0	0	4	0
SUBTOTAL	55	7	53	14	61	9

Eastman School of Music

Composition	1	2	0	1	0	4
Conducting	4	0	3	0	4	3
Jazz Studies & Contemp Media	4	0	4	0	4	0
Music Education	11	4	11	1	13	2
Music Theory	2	3	3	2	1	10
Musicology	2	0	3	1	4	1
Performance & Literature	53	26	58	17	65	24
Piano Accompanying & Chamber Music	4	1	3	2	1	0
Theory Pedagogy	2	0	3	0	1	0
SUBTOTAL	83	36	88	24	93	44

UNIVERSITY OF ROCHESTER
Degrees Conferred - Graduate Majors Completed
By School, Double Majors Counted Twice*

	1999-2000		2000-01		2001-02	
	Mast.	Doc.	Mast.	Doc.	Mast.	Doc.
School of Medicine and Dentistry						
Anatomy	1	1	0	4	2	0
Biochemistry	9	2	8	8	8	3
Biophysics	5	3	6	4	4	2
Dental Science	1	0	0	0	0	0
Environmental Studies	5	0	5	0	0	0
Genetics	2	1	2	0	2	0
Health Services Research	0	1	0	3	0	4
Industrial Hygiene	5	0	3	0	0	0
Marriage & Family Therapy	0	0	0	0	2	0
Microbiology & Immunology	12	11	14	7	13	12
Neuroscience	4	4	5	2	2	6
Pathology	5	2	16	4	4	2
Pharmacology	6	3	8	4	4	4
Physiology	1	2	0	1	1	1
Public Health	14	0	14	0	11	0
Statistics	1	2	2	1	2	2
Toxicology	3	2	2	7	6	2
SUBTOTAL without MDs	74	34	85	45	61	38
MD's (First Professional)	-	102	-	85	-	109
SUBTOTAL with MDs	74	136	85	130	61	147
School of Nursing						
Acute Cardio-Pulmonary Nurse Practitioner	4	0	1	0	0	0
Acute Care Oncology Nurse Practitioner	1	0	1	0	0	0
Acute Care Cardiovascular	0	0	2	0	0	0
Acute Critical Care Nurse Practitioner	5	0	3	0	5	0
Adult Nurse Practitioner	9	0	7	0	8	0
Care of Children & Families	7	0	5	0	7	0
Family Nurse Practitioner	10	0	8	0	6	0
Neonatal Nurse Practitioner	0	0	3	0	1	0
Nurse Midwifery	1	0	5	0	0	0
Nursing	0	5	0	4	0	4
Psych Mental Health	4	0	8	0	3	0
Women's Health Care	0	0	6	0	0	0
SUBTOTAL	41	5	49	4	30	4
TOTAL UNIVERSITY	948	313	892	282	832	295

*Totals on this table are greater than the total number of degrees conferred because double majors are reported here.

The University awards the following Master's and Doctorate degrees:

MA, MS, MM, MPH, MBA, PhD, EDD, DMA

Source: Student Information System

UNIVERSITY OF ROCHESTER
Certificates Conferred

	1999-2000	2000-01	2001-02
With Bachelor's Degrees			
Actuarial Studies	2	6	7
Asian Studies	0	1	1
International Relations	16	23	17
Polish & Central European Studies	3	2	1
Management Studies	134	126	134
Biomedical Engineering	2	0	0
Biotechnology	1	1	1
Total	158	159	161
Post Master's Certificates			
Dentistry	27	41	40
Nursing	11	15	10
Total	38	56	50

Sources: College Center for Academic Support; Engineering Undergraduate Studies;
 Undergraduate Program in Biology and Medicine; School of Nursing; Eastman Dental Center

UNIVERSITY OF ROCHESTER
Admissions Activity

Fall	1993	1994	1995	1996	1997	1998	1999	2000	2001	2002
------	------	------	------	------	------	------	------	------	------	------

College: First Time Full-time Freshmen (Arts & Sciences, Engineering & Applied Sciences)

Number of Applicants	8,016	8,393	8,385	9,057	9,147	8,782	8,656	10,082	9,579	8,682
Number Offered	5,233	5,475	5,304	4,854	5,166	5,189	5,714	5,086	5,041	4,846
Entered	1,112	1,129	1,085	904	799	968	1,087	930	1,008	934

University: First Time Full-time Freshmen (College and Eastman School of Music)

Number of Applicants	8,727	9,138	9,195	9,970	9,983	9,760	9,623	11,133	10,602	9,606
Number Offered	5,495	5,744	5,608	5,138	5,402	5,771	5,975	5,335	5,294	5,091
Entered	1,240	1,246	1,223	1,037	908	1,077	1,221	1,051	1,117	1,063

University: Graduate Students

Number of Applicants	6,386	6,626	6,678	6,822	6,839	7,103	6,785	7,798	7,704	9,229
Number Offered	1,996	1,984	1,938	1,956	1,908	1,902	1,723	1,855	1,945	1,804
Entered	931	980	985	977	945	947	971	860	1,007	911

First Professional Students (M.D. Degree)

Number of Applicants	2,636	3,233	3,959	4,089	3,914	7,018	5,865	5,111	4,305	3,845
Number Offered	246	237	240	248	276	248	288	252	280	281
Entered	101	98	99	99	100	100	100	98	100	100

Source: Admissions Offices; Graduate Dean

UNIVERSITY OF ROCHESTER
Enrollment: Full- and Part-time Students, Fall Semester

Undergraduate

	1993-94	1994-95	1995-96	1996-97	1997-98	1998-99	1999-00	2000-01	2001-02	2002-03
Arts & Sciences*	3,850	3,881	3,904	3,672	3,473	3,293	3,322	3,281	3,428	3,474
Engineering & Applied Sciences	733	667	570	505	430	457	493	481	542	497
The College Subtotal	4,583	4,548	4,474	4,177	3,903	3,750	3,815	3,762	3,970	3,971
Eastman School of Music	464	468	493	491	462	468	485	481	475	482
School of Nursing	212	190	215	217	189	159	145	143	122	104
Subtotal	5,259	5,206	5,182	4,885	4,554	4,377	4,445	4,386	4,567	4,557
Non-matriculated	294	290	238	159	146	126	135	138	149	173
Total	5,553	5,496	5,420	5,044	4,700	4,503	4,580	4,524	4,716	4,730

Graduate and Professional Students

	1993-94	1994-95	1995-96	1996-97	1997-98	1998-99	1999-00	2000-01	2001-02	2002-03
Arts & Sciences	946	888	826	766	721	660	632	600	638	627
Engineering & Applied Sciences	294	291	270	255	244	248	238	225	220	271
The College Subtotal	1,240	1,179	1,096	1,021	965	908	870	825	858	898
Simon Graduate School of Business	772	751	682	688	748	764	780	727	744	804
Warner Graduate School of Education & Human Development	225	232	226	244	236	204	226	259	274	293
Eastman School of Music	314	345	345	341	355	329	315	331	334	359
School of Medicine & Dentistry, M.D.	411	411	402	405	419	419	412	412	418	417
School of Medicine & Dentistry, M.S. & Ph.D.	352	352	357	347	357	342	371	380	433	451
School of Nursing	231	255	232	241	199	171	158	157	140	149
Subtotal	3,545	3,525	3,340	3,287	3,279	3,137	3,132	3,091	3,201	3,371
Non-matriculated	794	762	829	530	550	605	515	582	573	524
Total	4,339	4,287	4,169	3,817	3,829	3,742	3,647	3,673	3,774	3,895

All

	1993-94	1994-95	1995-96	1996-97	1997-98	1998-99	1999-00	2000-01	2001-02	2002-03
Arts & Sciences	4,796	4,769	4,730	4,438	4,194	3,953	3,954	3,881	4,066	4,101
Engineering & Applied Sciences	1,027	958	840	760	674	705	731	706	762	768
The College Subtotal	5,823	5,727	5,570	5,198	4,868	4,658	4,685	4,587	4,828	4,869
Simon Graduate School of Business	772	751	682	688	748	764	780	727	744	804
Warner Graduate School of Education & Human Development	225	232	226	244	236	204	226	259	274	293
Eastman School of Music	778	813	838	832	817	797	800	812	809	841
School of Medicine & Dentistry, M.D.	411	411	402	405	419	419	412	412	418	417
School of Medicine & Dentistry, M.S. & Ph.D.	352	352	357	347	357	342	371	380	433	451
School of Nursing	443	445	447	458	388	330	303	300	262	253
University, Subtotal	8,804	8,731	8,522	8,172	7,833	7,514	7,577	7,477	7,768	7,928
Non-matriculated	1,088	1,052	1,067	689	696	731	650	720	722	697
University Total	9,892	9,783	9,589	8,861	8,529	8,245	8,227	8,197	8,490	8,625

*Older dates may include a small number of students enrolled in University College (a unit which has been phased out).

Source: Student Information System

UNIVERSITY OF ROCHESTER

Enrolled Students: Declared Ethnic Origin*

FALL 2002	TOTAL		Nonresident alien		Black, non-Hispanic		American Indian/Alaska Native		Asian/Pacific Islander		Hispanic		White, non-Hispanic		Unknown	
	M	W	M	W	M	W	M	W	M	W	M	W	M	W	M	W
	Undergraduates-Full Time															
First-time Freshmen	564	492	18	11	18	25	1	3	68	59	19	20	360	316	80	58
All other Freshmen	21	17	3	2	1	0	0	0	5	2	2	3	8	8	2	2
Sophomores	613	495	17	11	23	29	1	3	84	51	19	22	383	320	86	59
Juniors	608	455	26	14	25	30	2	3	79	52	27	16	374	276	75	64
Seniors	626	548	22	27	19	21	0	1	86	65	17	23	399	348	83	63
Unclassified	2	7	1	4	0	0	0	0	0	0	0	0	0	0	1	3
SUBTOTAL	2,434	2,014	87	69	86	105	4	10	322	229	84	84	1,524	1,268	327	249
Undergraduates-Part Time																
Sophomores	0	0	0	0	0	0	0	0	0	0	0	0	0	0	0	0
Juniors	14	79	1	1	0	0	0	0	0	1	1	0	11	73	1	4
Seniors	16	9	1	3	4	0	0	0	1	2	3	0	6	2	1	2
Unclassified	37	92	0	2	2	9	0	2	6	3	1	3	24	64	4	9
SUBTOTAL	67	180	2	6	6	9	0	2	7	6	5	3	41	139	6	15
TOTAL Undergraduates	2,501	2,194	89	75	92	114	4	12	329	235	89	87	1,565	1,407	333	264
First Professional																
First-time	46	55	0	0	1	6	0	0	7	10	0	0	37	36	1	3
All others	141	172	0	0	11	20	3	1	28	37	5	11	94	103	0	0
TOTAL First Professional	187	227	0	0	12	26	3	1	35	47	5	11	131	139	1	3
Graduate Students-Full Time																
First-time Masters/Doctoral	410	332	145	110	16	13	0	2	14	26	8	7	182	150	45	24
All others	1,000	590	515	253	11	22	0	1	26	36	18	13	368	232	62	33
Unclassified	0	3	0	2	0	1	0	0	0	0	0	0	0	0	0	0
Beyond First Doctoral	1	0	1	0	0	0	0	0	0	0	0	0	0	0	0	0
SUBTOTAL	1,411	925	660	365	27	36	0	3	40	62	26	20	550	382	107	57
Graduate Students-Part Time																
First-time Masters/Doctoral	65	98	1	5	2	4	1	0	9	6	1	6	46	74	5	3
All others	193	247	5	7	5	15	0	0	6	11	4	9	153	186	20	19
Unclassified	218	250	32	16	7	12	0	3	13	13	4	7	139	186	23	13
SUBTOTAL	476	595	38	28	14	31	1	3	28	30	9	22	338	446	48	35
TOTAL Graduates	1,887	1,520	698	393	41	67	1	6	68	92	35	42	888	828	155	92
Total University	4,575	3,941	787	468	145	207	8	19	432	374	129	140	2,584	2,374	489	359

* This report indicates the ethnic origin of students, as reported by the students. Definitions are below.

Numbers 1-5 apply to all who are Nonresident aliens.

1. Asian/Pacific Islander: A person having origins in any of the original peoples of the Far East, Southeast Asia, the Indian Subcontinent, or Pacific Islands
2. Black, non-Hispanic: A person having origins in any of the black racial groups of Africa (except those of Hispanic origin)
3. White, non-Hispanic: A person having origins in any of the original peoples of Europe, North Africa, or the Middle East (except those of Hispanic origin)
4. Hispanic: A person of Mexican, Puerto Rican, Cuban, Central or South American, or other Spanish culture or origin, regardless of race
5. American Indian/Alaska Native: A person having origins in any of the original peoples of North America and who maintains cultural identification through tribal affiliation or community recognition
6. Nonresident alien: A person who is not a citizen or national of the United States and who is in this country on a visa or temporary basis and does not have the right to remain indefinitely
7. Race/Ethnicity Unknown: Used only if the student did not select a racial-ethnic designation and the institution finds it impossible to place the student in one of the aforementioned racial/ethnic categories

Source: IPEDS-EF1 Report. Totals may differ from internal University Student Information System reports.

UNIVERSITY OF ROCHESTER
Geographic Distribution of Full-time Students
FALL 2002

		ALL		Arts & Sciences		Engineering		Simon School	Warner School	Eastman		SMD	Nursing		Eastman Dental	
		UGs	Grads	UGs	Grads	UGs	Grads	Grads	Grads	UGs	Grads	Grads	UGs	Grads	Grads	
Middle Atlantic Region	District of Columbia	12	4	9	2	2		1		1		1				
	Delaware	8	2	6	1	1		1		1						
	Maryland	104	28	86	8	6	2	4		12	6		8			
	New Jersey	245	42	198	11	22	7	15	1	25	7		1			
	New York	2052	595	1707	105	233	61	166	67	92	39		117	20	36	4
	NY % of Total	46%	25%													
	Pennsylvania	239	67	189	28	24	8	6		25	12		13	1		
	West Virginia	7	2	5		2		1					1			
New England Region	Connecticut	134	18	101	4	20	1	3		13	5		5			
	Massachusetts	247	37	206	9	26	4	13		15	4		7			
	Maine	33	4	24	1	7				2			3			
	New Hampshire	42	6	33	4	6				3	1		1			
	Rhode Island	18	4	15	1	2			1	1			2			
	Vermont	27	9	18	4	4	2			5	2		1			
Great Lakes Region	Illinois	87	32	58	13	5		10		24	6		3			
	Indiana	25	7	16	3	2				7	2		2			
	Michigan	38	21	23	9	4	4	2		11	2		4			
	Ohio	107	30	73	10	14	3	4		20	10		3			
	Wisconsin	30	15	13	6	5	2	1		12	4		2			
South-eastern Region	Alabama	7	3	5	2	1				1	1					
	Arkansas	1	2	1	2											
	Florida	41	19	29	4	6	2	4		6	7		2			
	Georgia	26	11	11	4			1		15	5			1		
	Kentucky	4	5	4	1		1	1	1		1					
	Louisiana	11	2	8		1		1		2			1			
	Mississippi	2	2	1	1					1			1			
	North Carolina	16	16	6	3			4		10	5		4			
	South Carolina	10	7	4	2	1				5	3		1			1
	Tennessee	11	9	7	3					4	5		1			
	Virginia	43	25	30	9	3		7		10	9					
Central Region	Iowa	9	4	3	1	1				5	1		2			
	Kansas	7	3	3	2			1		4						
	Minnesota	23	22	14	7	2	1	3		7	10		1			
	Missouri	30	17	24	7	2	4	3		4	3					
	North Dakota	1	2	1	1						1					
	Nebraska	4	1	2		1				1	1					
	South Dakota	3	1	3							1					
South-western Region	Arizona	12	4	8			1			4			1		2	
	New Mexico	10	5	9	2		2			1	1					
	Oklahoma	9	4	6	1	1				2	2		1			
	Texas	70	28	50	7	5		7	1	14	12		1	1		
Mountain Region	Colorado	28	15	21	3	6	4	4		1	3		1			
	Idaho	7	4	4	1			1		3	2					
	Montana	6	4	5	1	1		1			1		1			
	Nevada	3	2	2						1			2			
	Utah	7	16	3	4		1	4		4	4		3			
	Wyoming	2	0	1						1						
Pacific Region	Alaska	5	1	2		2		1		1						
	California	94	76	56	26	6	1	25	4	32	12		8			
	Hawaii	13	1	11		2							1			
	Oregon	16	10	12	4	1	1	1		3	4					
	Washington	34	28	22	4	4	3	2		8	8		9			
Other	Guam	1	0	1												
	Puerto Rico	4	2	4									1			
	Virgin Islands	3	0	3												
	AE+	6	0	5			1									
	AS++	1	0				1									
	Foreign	378	1085	263	296	56	138	342	8	58	130		145	1	7	19
	Military Base	26	3	23	1	2					1	2				
TOTAL	4,439	2,362	3,447	618	491	253	640	85	478	335	361	23	46	24		

+ AE = Military Assignment, ++ AS = American Samoa
Source: Student Information System

UNIVERSITY OF ROCHESTER

Undergraduate Majors (Official and Unofficial)

By School, All Students, Fall Semester

	2000-01		2001-02		2002-03	
	Unofficial	Official	Unofficial	Official	Unofficial	Official
THE COLLEGE						
Arts & Sciences						
American Sign Language	6	15	4	13	4	15
Anthropology	14	28	15	26	13	19
Art & Art History	9	27	9	16	15	26
Art History	6	13	6	5	10	10
Studio Arts	3	14	3	11	5	16
Biological Sciences	167	175	174	182	200	178
Biochemistry	64	30	67	25	78	22
Cell & Development	15	20	14	19	21	19
Ecology & Evol Biol	1	9	4	14	7	14
Microbiology	20	39	16	42	8	44
Molecular Genetics	37	19	40	28	47	31
Neuroscience	30	58	33	54	39	48
Biology	356	97	314	111	286	111
Brain & Cognitive Sciences	18	33	21	40	23	44
Chemistry	59	38	60	38	56	34
Clinical & Social Psychology	123	218	137	232	150	253
Cognitive Science	11	7	11	4	4	3
Computer Science	169	55	153	82	128	96
Earth & Environmental Sciences	23	30	23	23	22	25
Biology-Geology	3	5	4	3	3	2
Environmental Sciences	16	17	12	7	12	8
Environmental Studies	2	2	3	4	4	1
Geological Sciences	2	6	4	9	3	14
Economics	100	236	104	260	118	254
English	64	103	71	109	82	129
Film Studies	9	31	13	19	8	19
Film and Media Studies	0	0	0	0	2	0
Health & Society	11	75	17	64	15	69
History	42	104	48	90	66	77
Integrated Sciences	0	0	0	0	1	0
Interdepartmental	4	9	6	7	4	14
Linguistics	2	10	1	9	4	8
Mathematics	47	76	72	90	69	99
Applied Mathematics	1	5	3	9	4	13
Computer Science:Applied Math.	2	0	0	0	0	0
Computer Science:Mathematics	4	0	1	0	0	0
Mathematics	40	68	65	78	61	84
Mathematics-Statistics	0	3	3	3	4	2
Modern Languages & Cultures	18	62	15	74	22	81
Comparative Literature	1	4	0	1	0	1
French	4	8	6	9	8	13
German	2	11	3	9	2	12
Japanese	5	11	1	12	3	14
Russian	0	8	1	7	1	5
Spanish	6	20	4	36	8	36
Music	13	11	12	13	11	15
Philosophy	15	26	16	20	15	17
Physics and Astronomy	64	41	52	48	80	39
Physics	52	31	39	33	56	27
Physics and Astronomy	12	10	13	15	24	12
Political Science	88	184	97	175	114	189
Religion & Classics	8	58	10	55	10	67
Classics	3	4	5	4	2	7
Religious Studies	5	54	5	51	8	60
Russian Studies	1	5	1	2	1	0
Statistics	2	10	3	14	3	12
Women's Studies	0	5	0	4	0	4
Miscellaneous	424	0	441	0	410	0
General Science	1	0	0	0	0	0
3-2 Simon	17	0	11	0	8	0
Unknown	406	0	430	0	402	0
SUBTOTAL	1,867	1,769	1,900	1,820	1,936	1,897

UNIVERSITY OF ROCHESTER
Undergraduate Majors (Official and Unofficial)
By School, All Students, Fall Semester

	2000-01		2001-02		2002-03	
	Unofficial	Official	Unofficial	Official	Unofficial	Official
THE COLLEGE						
School of Engineering and Applied Sciences						
Biomedical Engineering	112	50	96	71	89	66
Chemical Engineering	58	46	46	52	34	45
Electrical & Computer Engineering	95	34	116	38	87	49
Engineering Science	4	0	7	2	22	1
Geomechanics	4	2	5	1	2	2
Interdepartmental Engineering	14	3	23	0	5	1
Mechanical Engineering	71	42	59	49	73	45
Optics	40	28	46	46	36	47
SUBTOTAL	398	205	398	259	348	256
THE COLLEGE SUBTOTAL	2,265	1,974	2,298	2,079	2,284	2,153
Eastman School of Music						
Applied Music	3	430	0	427	0	422
Composition	0	19	0	19	0	20
Jazz & Contemp Media	0	21	0	27	0	29
Jazz & Contemp Media - Performance	0	11	0	11	0	8
Music Education - General	0	8	0	11	0	17
Music Education - Instrumental	1	61	0	58	0	56
Music Education - Vocal	0	20	0	18	0	15
Music Theory	0	10	0	6	0	8
Musical Arts	0	0	0	0	0	5
SUBTOTAL	4	580	0	577	0	580
School of Nursing	0	166	0	138	0	122
University College						
Natural Science	0	0	0	1	0	0
Social Science	0	1	0	0	0	0
SUBTOTAL	0	1	0	1	0	0
TOTAL UNIVERSITY	2,269	2,721	2,298	2,795	2,284	2,855

Notes: Official majors have been declared by the student and approved by the school.
 Students with double majors and/or double degrees are counted in each major and/or degree.
 Source: Student Information System

UNIVERSITY OF ROCHESTER

Graduate Majors

By School, All Students, Fall Semester (Those with double majors and/or double degrees are counted in each major and/or degree)

	2000-01			2001-02			2002-03			2002-03	
	Full	Part	X*	Full	Part	X	Full	Part	X	Masters	Doctoral
THE COLLEGE											
Arts & Sciences											
Biology	43	1	1	48	0	0	41	0	1	0	42
Brain & Cognitive Science	28	0	1	27	0	1	27	0	0	0	27
Chemistry	67	2	1	72	1	5	74	1	5	2	78
Clinical & Social Psychology	41	0	4	44	0	1	49	0	2	0	51
Computer Science	41	0	1	48	0	1	46	0	3	1	48
Earth & Environmental Sciences (Geology)	10	1	0	13	0	3	9	1	0	0	10
Economics	64	0	7	72	0	8	68	0	5	1	72
English	60	5	4	59	5	9	60	4	9	19	54
History	38	1	6	35	3	4	35	2	4	9	32
Interdepartmental	0	0	0	0	0	0	0	1	0	1	0
Linguistics	0	0	0	1	0	0	2	0	0	1	1
Mathematics	15	0	0	19	0	0	19	0	1	0	20
Modern Languages & Cultures, Comp Lit	6	0	2	4	0	1	0	0	1	0	1
Philosophy	21	0	1	21	0	1	24	1	1	0	26
Physics and Astronomy (Physics)	90	0	6	106	0	1	106	0	6	3	109
Political Science	31	0	7	30	0	8	27	0	7	0	34
Public Policy Analysis	1	0	0	0	0	0	0	0	0	0	0
Sociology	0	0	0	0	0	1	0	0	0	0	0
Visual & Cultural Studies	36	2	8	36	1	9	35	1	6	1	41
SUBTOTAL	592	12	49	635	10	53	622	11	51	38	646

School of Engineering and Applied Sciences											
Biomedical Engineering	22	0	0	22	0	1	28	0	0	4	24
Chemical Engineering	16	6	5	21	5	2	34	3	2	14	26
Electrical Engineering	59	3	9	61	2	5	64	3	3	9	60
Materials Science	23	4	3	13	4	4	18	2	1	3	18
Mechanical Engineering	26	4	9	19	5	6	24	7	3	12	22
Optics	70	2	10	68	4	8	88	4	6	20	78
SUBTOTAL	216	19	36	204	20	26	256	19	15	62	228

THE COLLEGE SUBTOTAL	808	31	85	839	30	79	878	30	66	100	874
-----------------------------	------------	-----------	-----------	------------	-----------	-----------	------------	-----------	-----------	------------	------------

*X-time indicates students are not registered for course work in the semester. These students are normally enrolled in a 'place-holder' course, which makes them eligible to register for courses at Rochester in a subsequent semester.

UNIVERSITY OF ROCHESTER

Graduate Majors

By School, All Students, Fall Semester (Those with double majors and/or double degrees are counted in each major and/or degree)

	2000-01			2001-02			2002-03			2002-03	
	Full	Part	X*	Full	Part	X	Full	Part	X	Masters	Doctoral
Simon Graduate School of Business Administration											
Business Administration	434	257	4	467	241	6	489	200	7	630	66
Business Admin. - Executive Development	106	1	1	103	0	0	79	0	0	79	0
Business Admin. - Bern, Switzerland	46	0	0	48	0	0	50	0	0	50	0
Business Admin. - Nijenrode, Netherlands	35	0	0	48	0	0	38	0	0	38	0
SUBTOTAL	621	258	5	666	241	6	656	200	7	797	66

	2000-01			2001-02			2002-03			2002-03	
	Full	Part	X*	Full	Part	X	Full	Part	X	Masters	Doctoral
Warner Graduate School of Education and Human Development											
Administration: General	0	0	0	0	0	0	0	10	2	12	0
Administration: School Admin & Supervisor	0	0	0	0	0	0	1	0	0	1	0
Biology (5-12)	0	0	0	0	0	0	0	1	0	1	0
Biology (7-12)	0	0	0	0	0	0	1	4	0	5	0
Catholic School Admin	0	0	0	0	2	0	0	4	0	4	0
Chemistry (5-12)	0	0	0	0	0	0	1	0	0	1	0
Community Counseling	0	0	0	0	0	0	4	8	0	12	0
Community Counseling (3-2)	0	0	0	0	0	0	0	0	1	1	0
Couns, Fam & Work Life Studies	0	0	1	0	0	0	0	0	0	0	0
Counseling & Human Dev, Counseling Track	4	7	0	3	15	0	1	1	3	0	5
Counseling & Human Develop	12	25	5	12	29	4	7	10	4	3	18
Curriculum Elementary	7	5	0	5	10	0	1	1	0	2	0
Curriculum General	1	8	1	2	10	2	0	1	0	1	0
Curriculum Secondary English	11	1	1	3	0	2	0	3	0	3	0
Curriculum Secondary for Language	2	0	0	1	1	0	0	1	0	1	0
Curriculum Secondary Math	2	2	0	0	3	0	0	1	1	2	0
Curriculum Secondary Science	4	6	2	7	8	2	2	5	1	8	0
Curriculum Secondary Soc Stud	5	2	0	5	5	2	0	2	4	6	0
Early Childhood (B-2)	0	0	0	0	0	0	1	0	0	1	0
Early Childhood Inclusion (B-2)	0	0	0	0	0	0	1	0	0	1	0
Education Administration	1	50	7	4	48	6	1	46	9	2	54
Elementary (1-6)	0	0	0	0	0	0	5	0	0	5	0
Elementary Inclusion (1-6)	0	0	0	0	0	0	1	0	0	1	0
Elementary Inclusion Prof	0	0	0	0	0	0	0	1	0	1	0
English (7-12)	0	0	0	0	0	0	1	1	0	2	0
Higher Education	9	21	5	9	22	5	11	20	7	12	26
Human Devel. Community Agency Counseling	1	0	0	0	1	0	0	0	0	0	0
Human Devel. in Ed. Contexts	3	3	4	4	2	4	6	7	4	0	17
Human Development : General	0	6	2	1	11	3	1	6	2	9	0
Math (5-12)	0	0	0	0	0	0	1	0	0	1	0
Math Ext. (5-6)	0	0	0	0	0	0	0	1	0	1	0
Math Inclusion (5-12)	0	0	0	0	0	0	1	0	0	1	0
Psychological Development	0	1	0	0	1	0	0	1	0	1	0
School Counseling	0	0	0	0	0	0	7	22	0	29	0
School Counseling: Community	0	0	0	0	0	0	3	2	1	6	0
School Guidance	3	4	0	0	2	0	2	1	0	3	0
Social Studies (7-12)	0	0	0	0	0	0	1	0	0	1	0
Social Studies Prof	0	0	0	0	0	0	0	1	0	1	0
Spanish (7-12)	0	0	0	0	0	0	2	1	0	3	0
Teaching and Curriculum	0	0	0	0	0	0	3	9	4	16	0
Teaching Curriculum	2	24	3	2	18	5	2	15	7	0	24
Teaching Curriculum & Change	12	10	3	10	10	6	12	14	9	0	35
Teaching in Biology	0	4	0	0	0	0	0	0	0	0	0
Teaching in English	2	0	1	2	0	0	1	1	0	2	0
Teaching in Foreign Lang	0	1	0	0	0	0	0	0	0	0	0
Teaching in History	3	2	0	1	0	0	1	0	0	1	0
Teaching in Mathematics	0	0	0	0	0	0	1	0	0	1	0
TESOL	2	0	2	3	1	0	2	3	0	5	0
Thought & Policy	2	0	1	3	1	0	1	2	0	0	3
SUBTOTAL	88	182	38	77	200	41	86	206	59	169	182

*X-time indicates students are not registered for course work in the semester. These students are normally enrolled in a 'place-holder' course, which makes them eligible to register for courses at Rochester in a subsequent semester.

UNIVERSITY OF ROCHESTER

Graduate Majors

By School, All Students, Fall Semester (Those with double majors and/or double degrees are counted in each major and/or degree)

	2000-01			2001-02			2002-03			2002-03	
	Full	Part	X*	Full	Part	X	Full	Part	X	Masters	Doctoral
Eastman School of Music											
Accompanying	13	0	2	13	0	0	12	0	3	4	11
Composition	10	3	3	10	3	3	16	0	1	13	4
Conducting	7	3	2	9	4	1	10	0	3	7	6
Jazz Studies&Contemp Media	4	0	0	9	0	0	9	2	0	8	3
Jazz Studies&Contemp Media-Performance	1	1	0	0	1	0	0	0	0	0	0
Jazz Studies&Contemp Media-Writing	2	0	0	4	0	0	6	0	0	6	0
Music Education - Graduate	10	18	3	15	14	4	13	11	3	16	11
Music Theory	32	1	8	28	1	15	31	0	6	4	33
Musicology	17	0	5	15	0	5	17	0	5	1	21
Performance & Literature	195	32	28	199	28	30	235	8	31	157	117
Theory Pedagogy	6	3	0	7	2	1	11	0	1	6	6
SUBTOTAL	297	61	51	309	53	59	360	21	53	222	212

	2000-01			2001-02			2002-03			2002-03	
	Full	Part	X	Full	Part	X	Full	Part	X	Masters	Doctoral
School of Medicine & Dentistry											
<i>Notes: Figures do not include M.D. student enrollments.</i>											
<i>First-year Ph.D. student clusters are reported in the program name.</i>											
Anatomy	4	0	1	3	0	1	0	0	2	0	2
Biochem Molecular Bio & Genetics	8	0	0	14	0	0	13	0	0	0	13
Biochemistry	27	0	3	31	0	0	36	1	0	1	36
Biophysics	22	0	1	23	0	0	23	0	0	0	23
Cell Regulatns & Molecular Pharm	5	0	0	15	0	0	0	0	0	0	0
Cellular & Molecular Basis of Disease	0	0	0	0	0	0	15	0	0	0	15
Dental Science	0	1	0	0	0	0	1	1	0	2	0
Environmental Studies	0	5	0	0	0	0	0	0	0	0	0
Epidemiology	0	0	0	0	0	0	1	0	0	0	1
Genetics	5	0	0	6	0	0	16	0	1	0	17
Genetics Genomics & Dev	0	0	0	0	0	0	2	0	0	0	2
Health Services Research & Policy	12	2	2	15	3	0	12	2	2	0	16
Immunology Microbiol & Vacc Biol	10	0	0	12	0	0	13	0	0	0	13
Industrial Hygiene	0	2	0	0	0	0	0	0	0	0	0
Integrative Biomedical Science	2	0	0	0	0	0	0	0	0	0	0
Microbiology & Immunology	53	9	3	58	11	3	55	8	3	11	55
Molecular Biophy & Structural Biochem	7	0	0	6	0	0	5	0	0	0	5
Marriage & Family Therapy	3	13	2	2	17	0	12	13	1	26	0
Molec Oncolgy & Cancer Biology	6	0	0	6	0	0	0	0	0	0	0
Molec Toxicolgy & Envir Medicine	8	0	0	5	0	0	0	0	0	0	0
Neurobiology	3	0	0	8	0	0	0	0	0	0	0
Neuroscience	25	0	1	25	0	0	36	0	2	0	38
Pathology	39	0	3	39	0	0	39	0	0	0	39
Pharmacology	24	0	0	24	1	0	26	2	1	2	27
Physiology	2	1	0	0	0	0	0	0	0	0	0
Public Health	2	20	4	9	17	6	10	24	9	43	0
Public Health Clinical Investigation	9	26	2	12	41	2	7	40	8	53	2
Statistics	9	0	0	10	0	0	2	0	0	0	2
Toxicology	21	0	1	22	0	0	35	0	2	0	37
SUBTOTAL	306	79	23	345	90	12	359	91	31	138	343

*X-time indicates students are not registered for course work in the semester. These students are normally enrolled in a 'place-holder' course, which makes them eligible to register for courses at Rochester in a subsequent semester.

UNIVERSITY OF ROCHESTER

Graduate Majors

By School, All Students, Fall Semester (Those with double majors and/or double degrees are counted in each major and/or degree)

	2000-01			2001-02			2002-03			2002-03	
	Full	Part	X*	Full	Part	X	Full	Part	X	Masters	Doctoral
School of Nursing											
Acute Critical Care	2	8	1	0	0	0	2	6	1	9	0
Acute Care Cardiovascular	0	0	0	0	8	0	0	8	2	10	0
Acute Care Oncology	0	1	0	0	0	0	0	0	0	0	0
Acute Care Cardiopulmonary	1	5	0	1	5	3	0	0	0	0	0
Adult Nurse Practitioner	2	21	2	2	18	3	0	25	7	32	0
Care of Children & Families	3	15	2	8	11	2	5	15	4	24	0
Family Health Nurse Practitioner	7	23	2	7	24	1	7	25	4	36	0
Gerontological Nurse Practitioner	0	2	0	0	1	1	0	0	0	0	0
Neonatal Nurse Practitioner	0	2	0	2	3	0	2	3	0	5	0
Nurse Midwifery	0	5	0	0	0	0	0	0	0	0	0
Nursing	18	11	10	15	14	12	23	7	8	1	37
Pediatric Nurses Prac/Psych Mental Health	0	0	0	0	0	0	3	0	0	3	0
Psych Mental Health	5	25	2	8	18	2	7	15	1	22	1
Women's Health Care	0	6	0	0	0	0	0	0	0	0	0
SUBTOTAL	38	124	19	43	102	24	49	104	27	142	38

	2000-01			2001-02			2002-03			2002-03	
	Full	Part	X	Full	Part	X	Full	Part	X	Masters	Doctoral
UNIVERSITY TOTALS	2,158	735	221	2,279	716	221	2,388	652	243	1,568	1,715

*X-time indicates students are not registered for course work in the semester. These students are normally enrolled in a 'place-holder' course, which makes them eligible to register for courses at Rochester in a subsequent semester.
Source: Student Information System

UNIVERSITY OF ROCHESTER

Course Credit Hours & Enrollments by School and Subject Area

Reported for Undergraduate & Graduate Students

Simon Graduate School of Business Administration	NUMBER OF CREDIT HOURS						NO. OF COURSE ENROLLMENTS					
	Fall 2000		Fall 2001		Fall 2002		Fall 2000		Fall 2001		Fall 2002	
	UG	Grad	UG	Grad	UG	Grad	UG	Grad	UG	Grad	UG	Grad
Accounting	552	1,434	512	1,528	576	1,311	140	620	130	676	146	575
Applied Economics	0	199	0	181	0	168	0	61	0	57	0	56
Applied Statistics	8	942	10	994	8	888	4	449	5	497	4	443
Business Env & Public Policy	0	126	0	63	0	102	0	42	0	21	0	34
Business Law	248	4	196	3	188	0	62	1	49	1	47	0
Competitive & Organizational Strategy	8	1,154	12	1,300	8	1,355	4	516	6	594	4	587
Computer & Information Sys	100	602	68	449	40	355	25	246	17	183	10	151
Exec. Program - Bern, Switzerland	0	408	0	432	0	450	0	136	0	144	0	150
Exec. Program - Nijenrode, Netherlands	0	490	0	524	0	570	0	140	0	143	0	152
Executive Development	0	1,651	0	1,257	0	839	0	440	0	353	0	242
Finance	102	1,425	176	1,563	174	1,497	26	475	45	521	44	499
General Business Admin	152	192	52	149	67	224	38	70	13	68	17	87
Health Sciences	0	0	0	0	0	63	0	0	0	0	0	21
Management Communications	2	167	0	191	2	173	2	155	0	187	2	173
Management Science Models	0	9	0	21	0	42	0	3	0	7	0	14
Marketing	184	417	160	552	148	540	46	139	40	184	37	180
Operations Management	52	219	72	237	32	300	13	73	18	79	8	100
TOTAL	1,408	9,439	1,258	9,444	1,243	8,877	360	3,566	323	3,715	319	3,464

Eastman School of Music	NUMBER OF CREDIT HOURS						NO. OF COURSE ENROLLMENTS					
	Fall 2000		Fall 2001		Fall 2002		Fall 2000		Fall 2001		Fall 2002	
	UG	Grad	UG	Grad	UG	Grad	UG	Grad	UG	Grad	UG	Grad
Accompanying	67	93	76	72	47	64	54	37	57	21	40	23
Arts Leadership Curriculum	109	58	115	85	78	140	99	50	100	77	65	107
Composition	157	79	135	46	198	80	83	36	72	21	100	40
Conducting	122	51	98	66	118	58	61	21	49	28	59	26
Eastman Initiatives Curriculum	236	6	233	0	258	0	118	2	116	0	129	0
Eastman School of Music	0	94	0	55	0	122	0	85	0	88	0	102
Ensemble	890	87	911	90	903	102	525	70	530	71	545	87
Humanities	1,264	49	1,316	40	1,406	57	438	33	454	28	489	40
Jazz Studies & Contemp Media	220	36	288	103	318	105	149	22	185	75	205	64
Music Education	317	100	273	108	314	84	197	42	187	44	198	32
Music History	863	550	503	536	401	538	294	223	179	208	134	215
Musicology	0	66	4	142	0	110	0	15	1	38	0	28
Opera	70	79	75	68	71	46	28	38	31	34	30	26
Orchestration	0	18	0	6	0	12	0	10	0	3	0	6
Pedagogy	50	39	31	17	49	30	33	17	23	6	32	16
Sacred Music	0	0	2	6	2	4	0	0	1	3	2	4
Strings	0	0	3	0	0	0	0	0	3	0	0	0
Theory	1,423	451	1,457	483	1,446	535	496	160	456	185	438	203
SUBTOTAL	5,788	1,855	5,519	1,920	5,608	2,086	2,575	861	2,444	930	2,466	1,019
Applied Music	3,110	1,206	3,128	1,197	3,166	1,305	1,155	311	1,157	315	1,186	339
SUBTOTAL	8,898	3,061	8,647	3,117	8,774	3,391	3,730	1,172	3,601	1,245	3,652	1,358
Study Abroad	16	24	16	24	16	0	1	2	1	2	1	0
TOTAL	8,914	3,085	8,663	3,141	8,790	3,391	3,731	1,174	3,602	1,247	3,653	1,358

UNIVERSITY OF ROCHESTER

**Course Credit Hours & Enrollments by School and Subject Area
Reported for Undergraduate & Graduate Students**

School of Medicine & Dentistry Does not include M.D. students	NUMBER OF CREDIT HOURS						NO. OF COURSE ENROLLMENTS					
	Fall 2000		Fall 2001		Fall 2002		Fall 2000		Fall 2001		Fall 2002	
	UG	Grad	UG	Grad	UG	Grad	UG	Grad	UG	Grad	UG	Grad
Anatomy	0	64	0	48	0	0	0	8	0	6	0	0
Biochemistry	408	434	524	571	364	616	102	73	131	97	91	104
Biophysics	0	357	0	414	0	399	0	67	0	62	0	52
Biostatistics	12	354	14	420	28	380	5	92	7	107	12	109
Environmental Studies	0	24	0	0	0	0	0	6	0	0	0	0
General Dentistry	0	180	0	324	0	228	0	15	0	27	0	19
Genetics	0	88	0	93	0	272	0	12	0	14	0	50
Interdepartmental	58	657	119	630	96	691	15	301	30	144	21	154
Microbiology	301	864	425	1,088	381	1,050	77	213	108	273	96	286
Neuroscience	0	359	9	512	0	515	0	58	3	61	0	74
Oral Biology	0	6	0	60	0	28	0	6	0	54	0	19
Orthodontics	0	24	0	0	0	24	0	2	0	0	0	2
Pathology	0	646	4	692	0	604	0	113	1	96	0	116
Periodontics	0	36	0	0	0	12	0	3	0	0	0	1
Pharmacology & Physiology	0	437	8	528	0	591	0	67	2	98	0	107
Preventive Medicine	52	506	80	752	23	718	15	159	20	221	7	245
Prosthodontics	0	48	0	0	0	24	0	4	0	0	0	2
Psychiatry	3	200	0	161	0	243	1	59	0	54	0	84
Temporomandibular Joint Disorder	0	36	0	0	0	48	0	3	0	0	0	4
Toxicology	0	318	0	349	0	399	0	57	0	48	0	59
TOTAL	834	5,638	1,183	6,642	892	6,842	215	1,318	302	1,362	227	1,487

Warner Graduate School of Education and Human Development	NUMBER OF CREDIT HOURS						NO. OF COURSE ENROLLMENTS					
	Fall 2000		Fall 2001		Fall 2002		Fall 2000		Fall 2001		Fall 2002	
	UG	Grad	UG	Grad	UG	Grad	UG	Grad	UG	Grad	UG	Grad
Education	16	856	50	855	59	869	4	348	13	342	17	354
Field Experiences	0	0	0	0	0	60	0	0	0	0	0	26
Higher Education	32	970	59	1,013	55	1,037	10	340	16	355	16	351
TOTAL	48	1,826	109	1,868	114	1,966	14	688	29	697	33	731

School of Nursing	NUMBER OF CREDIT HOURS						NO. OF COURSE ENROLLMENTS					
	Fall 2000		Fall 2001		Fall 2002		Fall 2000		Fall 2001		Fall 2002	
	UG	Grad	UG	Grad	UG	Grad	UG	Grad	UG	Grad	UG	Grad
Nursing	1,396	1,194	1,116	1,024	872	1,048	348	334	261	291	231	277
Nursing/Community Center	0	0	0	0	13	49	0	0	0	0	13	33
TOTAL	1,396	1,194	1,116	1,024	885	1,097	348	334	261	291	244	310

University Totals	NUMBER OF CREDIT HOURS						NO. OF COURSE ENROLLMENTS					
	Fall 2000		Fall 2001		Fall 2002		Fall 2000		Fall 2001		Fall 2002	
	UG	Grad	UG	Grad	UG	Grad	UG	Grad	UG	Grad	UG	Grad
Fall each academic year	75,474	28,215	77,136	29,604	77,196	29,776	20,996	9,085	21,316	9,425	21,373	9,418

Notes:
 Students registered for leave of absence, including senior year in absentia, have been excluded.
 Eastman Dental Center credit hours are included in SMD.
 Cross-listed registrations are reported in the parent course.

Source: Student Information System

UNIVERSITY OF ROCHESTER
Distribution of Undergraduate Courses by Section Size
Fall 2002

Arts & Sciences	# Sect.	Avg. Size								
			1-9	10-19	20-29	30-39	40-49	50-99	100-199	200+
African-American Studies	2	71	2	0	0	0	0	0	0	0
American Sign Language	16	12	5	10	1	0	0	0	0	0
American Sign Language	15	13	4	10	1	0	0	0	0	0
Japanese Sign Language	1	6	1	0	0	0	0	0	0	0
Anthropology	11	22	1	6	1	2	1	0	0	0
Art & Art History	18	14	3	13	2	0	0	0	0	0
Art & Art History - Art History	8	16	2	4	2	0	0	0	0	0
Art & Art History - Studio Arts	10	13	1	9	0	0	0	0	0	0
Biology	15	71	0	2	2	1	0	6	4	0
Brain & Cognitive Science	16	45	0	6	2	2	1	4	0	1
Brain & Cognitive Science	10	57	0	2	1	2	1	3	0	1
Neuroscience	6	23	0	4	1	0	0	1	0	0
Chemistry	9	113	0	3	0	1	0	1	1	3
Clinical & Social Psychology	29	46	8	7	4	1	1	4	2	2
Clinical & Soc Sciences in Psy	27	40	8	7	4	1	1	3	1	2
Psychology	2	125	0	0	0	0	0	1	1	0
Computer Science	15	47	1	7	0	0	2	4	0	1
Dance	16	10	9	5	2	0	0	0	0	0
Earth & Environmental Sciences	10	15	5	2	2	0	1	0	0	0
Economics	17	58	0	2	3	1	4	5	1	1
English	41	23	4	19	4	9	4	1	0	0
Film & Media Studies	1	15	0	1	0	0	0	0	0	0
Health & Society	2	67	0	0	1	0	0	0	1	0
History	26	22	13	3	1	2	4	3	0	0
Linguistics	5	29	0	1	2	1	1	0	0	0
Mathematics	35	41	1	4	10	5	5	10	0	0
Modern Languages & Cultures	74	15	27	25	15	4	1	2	0	0
Chinese	4	10	3	0	1	0	0	0	0	0
Comparative Literature	3	29	0	1	0	2	0	0	0	0
French	10	13	3	5	2	0	0	0	0	0
German	10	12	5	3	2	0	0	0	0	0
Italian	8	18	4	2	0	0	1	1	0	0
Japanese	10	16	3	4	1	2	0	0	0	0
Polish	1	6	1	0	0	0	0	0	0	0
Russian	10	17	4	3	2	0	0	1	0	0
Spanish	18	16	4	7	7	0	0	0	0	0
Music	33	17	11	13	4	0	4	1	0	0
Naval Science	2	20	0	1	1	0	0	0	0	0
Philosophy	13	41	1	3	2	4	0	2	1	0
Physics & Astronomy	17	42	4	5	1	2	1	1	3	0
Astronomy	4	37	0	2	1	0	0	0	1	0
Physics	13	44	4	3	0	2	1	1	2	0
Political Science	22	34	4	4	4	5	1	3	1	0
Religion & Classics	30	23	10	5	8	1	3	3	0	0
Classical Greek	2	4	2	0	0	0	0	0	0	0
Classical Studies	1	26	0	0	1	0	0	0	0	0
Judaic Studies	1	28	0	0	1	0	0	0	0	0
Religion & Classics - Arabic	2	15	1	0	1	0	0	0	0	0
Religion & Classics - Hebrew	2	21	0	1	1	0	0	0	0	0
Religion & Classics - Latin	5	10	3	1	1	0	0	0	0	0
Religion & Classics - Yiddish	1	3	1	0	0	0	0	0	0	0
Religion & Classics - Sanskrit	2	10	1	1	0	0	0	0	0	0
Religion & Classics	14	36	2	2	3	1	3	3	0	0
Sociology	2	34	0	1	0	0	1	0	0	0
Statistics	5	49	1	1	0	1	0	1	1	0
The College: Arts & Sciences	48	13	9	38	1	0	0	0	0	0
Women's Studies	3	9	1	2	0	0	0	0	0	0
TOTAL	533	29	120	189	73	42	35	51	15	8

UNIVERSITY OF ROCHESTER

Distribution of Undergraduate Courses by Section Size

Fall 2002

School of Engineering and Applied Sciences	# Sect.	Avg. Size	1-9	10-19	20-29	30-39	40-49	50-99	100-199	200+
Biomedical Engineering	7	39	0	1	0	3	2	1	0	0
Chemical Engineering	10	22	0	4	4	2	0	0	0	0
Electrical & Computer Engineering	11	28	1	3	2	1	3	1	0	0
Mechanical Engineering	11	31	0	2	3	4	1	1	0	0
Optics	8	22	1	2	3	1	1	0	0	0
TOTAL	47	28	2	12	12	11	7	3	0	0

Warner Grad. School of Ed. & Human Dev.	# Sect.	Avg. Size	1-9	10-19	20-29	30-39	40-49	50-99	100-199	200+
Education	2	12	0	2	0	0	0	0	0	0
Higher Education	11	4	11	0	0	0	0	0	0	0
TOTAL	13	5	11	2	0	0	0	0	0	0

Simon Graduate School of Business Administration	# Sect.	Avg. Size	1-9	10-19	20-29	30-39	40-49	50-99	100-199	200+
Accounting	2	71	0	0	0	0	0	2	0	0
Business Law	2	24	0	1	0	1	0	0	0	0
Computers & Information Sys	1	10	0	1	0	0	0	0	0	0
Finance	1	40	0	0	0	0	1	0	0	0
General Business Admin	1	17	0	1	0	0	0	0	0	0
Marketing	2	18	1	0	1	0	0	0	0	0
Operations Management	1	8	1	0	0	0	0	0	0	0
TOTAL	10	30	2	3	1	1	1	2	0	0

UNIVERSITY OF ROCHESTER

Distribution of Undergraduate Courses by Section Size

Fall 2002

Eastman School of Music	#	Avg.								
	Sect.	Size	1-9	10-19	20-29	30-39	40-49	50-99	100-199	200+
Accompanying	3	18	1	1	0	1	0	0	0	0
Arts Leadership Curriculum	12	13	4	6	2	0	0	0	0	0
Composition	14	7	9	5	0	0	0	0	0	0
Conducting	5	13	3	1	1	0	0	0	0	0
Eastman Initiatives Curriculum	2	65	0	0	0	0	1	1	0	0
Eastman School of Music	1	20	0	0	1	0	0	0	0	0
Ensembles	21	27	11	3	2	1	1	1	2	0
Humanities	38	14	12	15	11	0	0	0	0	0
Art History	1	22	0	0	1	0	0	0	0	0
English	7	12	3	3	1	0	0	0	0	0
French	6	9	3	3	0	0	0	0	0	0
German	7	11	3	3	1	0	0	0	0	0
History	2	11	1	1	0	0	0	0	0	0
Humanities	8	21	0	2	6	0	0	0	0	0
Italian	5	12	2	2	1	0	0	0	0	0
Philosophy	1	19	0	1	0	0	0	0	0	0
Psychology	1	29	0	0	1	0	0	0	0	0
Jazz Studies & Contemp Media	19	12	12	5	1	1	0	0	0	0
Music Education	36	5	28	8	0	0	0	0	0	0
Music History	6	27	1	3	0	0	0	2	0	0
Opera	4	10	2	2	0	0	0	0	0	0
Pedagogy	3	11	1	2	0	0	0	0	0	0
Theory	22	21	1	12	5	3	1	0	0	0
SUBTOTAL	186	15	85	63	23	6	3	4	2	0
Applied Music	172	7	128	38	3	2	1			
Bassoon	3	7	2	1	0	0	0			
Chamber Music	14	17	7	2	2	2	1			
Clarinet	6	5	5	1	0	0	0			
Double Bass	1	17	0	1	0	0	0			
Euphonium	2	3	2	0	0	0	0			
Flute	4	9	2	2	0	0	0			
Guitar	3	5	2	1	0	0	0			
Harp	2	7	1	1	0	0	0			
Harpsichord	1	3	1	0	0	0	0			
Horn	3	9	2	0	1	0	0			
Jazz Lessons	12	4	11	1	0	0	0			
Keyboard	5	4	5	0	0	0	0			
Oboe	4	5	3	1	0	0	0			
Organ	3	3	3	0	0	0	0			
Percussion	3	9	1	2	0	0	0			
Piano	16	9	8	8	0	0	0			
Piano Class	33	5	29	4	0	0	0			
Piccolo	1	5	1	0	0	0	0			
Saxophone	5	3	5	0	0	0	0			
Strings	1	3	1	0	0	0	0			
Trombone	7	4	6	1	0	0	0			
Trumpet	3	9	2	1	0	0	0			
Tuba	2	4	2	0	0	0	0			
Viola	5	7	3	2	0	0	0			
Violin	13	5	11	2	0	0	0			
Violoncello	5	6	3	2	0	0	0			
Voice	15	8	10	5	0	0	0			
TOTAL	358	11	213	101	26	8	4	4	2	0

UNIVERSITY OF ROCHESTER

Distribution of Undergraduate Courses by Section Size

Fall 2002

School of Medicine and Dentistry	#	Avg.								
	Sect.	Size	1-9	10-19	20-29	30-39	40-49	50-99	100-199	200+
Biochemistry	1	94	0	0	0	0	0	1	0	0
Microbiology	2	29	0	0	1	1	0	0	0	0
TOTAL	3	51	0	0	1	1	0	1	0	0

School of Nursing	#	Avg.								
	Sect.	Size	1-9	10-19	20-29	30-39	40-49	50-99	100-199	200+
Nursing	10	16	3	2	4	0	1	0	0	0
Nursing/Community Center	2	19	0	2	0	0	0	0	0	0
TOTAL	12	17	3	4	4	0	1	0	0	0

Notes: Registrar's Student Section Extract includes all registrants who have not withdrawn as of the fourth week of classes (also includes auditors).

All cross listed registrations are listed in parent course.

Source: Student Information System

UNIVERSITY OF ROCHESTER
Full-time Tenure-track Faculty*

	1993-94	1994-95	1995-96	1996-97	1997-98	1998-99	1999-00	2000-01	2001-02	2002-03
SCHOOL										
Arts & Sciences	294	291	284	279	260	261	258	259	258	258
Engineering & Applied Sciences	59	58	56	55	53	51	50	49	53	57
The College Subtotal	353	349	340	334	313	312	308	308	311	315
Simon Graduate School of Business	37	37	37	39	41	40	46	48	46	47
Warner Graduate School of Education & Human Development	22	20	20	20	21	18	17	20	21	21
Eastman School of Music	79	80	83	80	86	81	82	80	82	86
School of Medicine & Dentistry	545	541	540	537	529	532	547	536	542	603
School of Nursing	22	19	18	19	17	17	14	15	16	18
University Total	1,058	1,046	1,038	1,029	1,007	1,000	1,014	1,007	1,018	1,090

*Full-time tenure-track faculty as reported annually by the University Budget Office. Includes faculty who are tenured, and those in a track towards tenure. School of Medicine and Dentistry counts are submitted by that school's dean's office.

UNIVERSITY OF ROCHESTER
Full-time Tenure-track Faculty

2000-01 2001-02 2002-03

SCHOOL AND DEPARTMENT

THE COLLEGE

Arts & Sciences

Anthropology	5	6	5
Art & Art History	12	11	8
Biology	18	17	16
Brain and Cognitive Science	17	17	17
Chemistry	19	19	20
Clinical and Social Psychology	14	13	14
Computer Science	14	13	14
Earth and Environmental Sciences	7	7	7
Economics	18	18	18
English	20	20	20
History	14	16	17
Linguistics	3	3	3
Mathematics	18	18	16
Modern Languages & Cultures	14	15	15
Music	4	5	4
Philosophy	8	8	8
Physics and Astronomy	26	26	27
Political Science	17	15	18
Religion & Classics	9	9	9
Sociology	2	2	2
SUBTOTAL	259	258	258

**School of Engineering
and Applied Sciences**

Biomedical Engineering	-	4	5
Chemical Engineering	5	6	6
Electrical & Computer Engineering	16	15	16
Mechanical Engineering	14	13	14
Optics	14	15	16
SUBTOTAL	49	53	57

THE COLLEGE SUBTOTAL 308 311 315

Simon Graduate School of Business Administration	48	46	47
---	-----------	-----------	-----------

Warner Graduate School of Education and Human Development	20	21	21
--	-----------	-----------	-----------

Eastman School of Music			
Composition	5	4	4
Conducting/Ensemble	3	3	4
Humanities	7	6	6
Jazz and Contemporary Media	4	4	4
Music Education	6	6	6
Musicology	8	8	8
Opera	2	1	1
Organ	1	2	2
Piano	8	8	8
Strings	14	13	14
Theory	8	9	10
Voice	4	7	8
Woodwind, Brass, Percussion	10	11	11
ESM SUBTOTAL	80	82	86

UNIVERSITY OF ROCHESTER
Full-time Tenure-track Faculty

2000-01

2001-02

2002-03

SCHOOL AND DEPARTMENT

**School of Medicine
and Dentistry***

	Tenured Prof & Assoc Prof	On-track All Eligible Ranks	Tenured Prof & Assoc Prof	On-track All Eligible Ranks	Tenured Prof & Assoc Prof	On-track All Eligible Ranks
Anesthesiology	2	15	4	15	3	14
Biochemistry and Biophysics	16	11	21	3	20	4
Biomedical Engineering	-	-	1	1	1	1
Biomedical Genetics	-	-	3	4	3	4
Biostatistics	1	4	3	4	3	4
Ctr Aging/Dev Biology	4	4	5	6	5	6
Ctr Cancer Biology	1	4	-	-	-	-
Ctr Cardiovascular Research	0	3	0	4	0	6
Ctr Oral Biology	2	1	4	2	3	2
Ctr Vaccine Biology/Immunology	1	1	1	4	4	4
Community & Preventive Medicine	3	10	4	9	5	9
Dentistry	1	7	1	6	1	10
Dermatology	3	5	3	4	2	6
Emergency Medicine	0	14	0	12	0	15
Environmental Medicine	6	5	7	7	7	8
Family Medicine	0	3	0	5	0	9
Laboratory Animal Medicine	0	2	0	2	0	3
Medicine	25	80	23	69	24	78
Microbiology & Immunology	19	6	13	5	13	5
Neurobiology & Anatomy	10	6	9	6	10	6
Neurology	6	24	10	19	10	25
Neurosurgery	2	4	1	3	1	2
Obstetrics & Gynecology	4	14	4	14	4	13
Ophthalmology	1	3	2	5	2	6
Orthopaedics	5	13	5	11	4	15
Pathology & Lab Medicine	10	12	10	13	10	19
Pediatrics	16	24	14	23	14	35
Pharmacology and Physiology	12	5	9	5	9	5
Physical Medicine/Rehabilitation	0	6	0	5	0	3
Psychiatry	5	30	7	34	7	45
Radiation Oncology	3	8	5	7	4	6
Radiology	4	16	4	18	5	18
Surgery	4	25	7	30	8	27
Urology	2	3	3	4	3	5
Subtotal	168	368	183	359	185	418

Medicine & Dentistry Subtotal

536

542

603

*Faculty excluded from this report: Professors and Associate Professors in Option A, C-T, or T-C-S, Geographic full-time Faculty and Professional Service Faculty, Service Track Faculty, Research Track Faculty

School of Nursing**

15

16

18

** Clinical faculty (non-tenure track) are not reported on this table.

2000-01

2001-02

2002-03

TOTAL UNIVERSITY

1,007

1,018

1,090

Source: University Budget Office; School of Medicine and Dentistry Dean's Office

UNIVERSITY OF ROCHESTER
Faculty and Staff in University Divisions*
as of September 30, 2002

UNIVERSITY DIVISIONS	Full- and Part-time Active Employees		
	FT	PT	TOTAL
Central Administration	1,312	123	1,435
The College, Arts and Sciences	767	103	870
School of Engineering/Laser Lab	347	21	368
Simon Grad School of Business	131	7	138
Warner Grad School of Education	43	16	59
Eastman School of Music	211	29	240
School of Medicine & Dentistry	2,829	363	3,192
School of Nursing	68	37	105
Memorial Art Gallery	55	17	72
Strong Memorial Hospital	4,755	1,079	5,834
Vice Provost for Health Affairs	601	80	681
SUBTOTAL	11,119	1,875	12,994

STRONG HEALTH DIVISIONS	Full- and Part-time Active Employees		
	FT	PT	TOTAL
Highland Hospital	1,236	407	1,643
Highlands at Brighton	170	23	193
Visiting Nurse Service	473	298	771
SUBTOTAL	1,879	728	2,607

TOTAL	12,998	2,603	15,601
--------------	---------------	--------------	---------------

*Time-as-reported and Casual employees are excluded.

Source: Human Resources