

University of Rochester

FACT BOOK

2003-04

Contents

Accreditation
Organization
Space
Degrees
Certificates
Admissions
Enrollment
Majors
Credit Hours
Section Size
Faculty
Staff

Updated: January 27, 2004

<http://www.rochester.edu/provost/ir/04OPENFACTBOOK.pdf>

Office of the Provost
Institutional Research
205 Wallis Hall
Rochester, NY 14627-0021
585-275-2806

E-mail: sallyann.hart@rochester.edu

© 2004 University of Rochester

University of Rochester

Fact Book 2003-04

<http://www.rochester.edu/provost/ir/04OPENFACTBOOK.pdf>

Table of Contents

<u>Subject</u>	<u>Time Covered</u>	<u>Page</u>
Table of Contents	--	2
Accreditation	--	3
Organization	1 Year	4
Space	10 Years	5
Degrees Conferred	10 Years	6
Degrees by Major	3 Years	7
Certificates	3 Years	12
Admissions	10 Years	13
Enrollment by School	10 Years	14
Enrollment, Gender and Ethnicity	1 Year	15
Enrollment, Geographic Origins	1 Year	16
Enrollment, Majors	3 Years	17
Courses, Credit Hours	3 Years	24
Courses, Section Size	1 Year	27
Faculty by School	10 Years	31
Faculty by Department	3 Years	32
Staff	1 Year	34

Office of the Provost
Institutional Research
205 Wallis Hall
Rochester, NY 14627-0021
585-275-2806
e-mail: sallyann.hart@rochester.edu

UNIVERSITY OF ROCHESTER

ACCREDITATION

The University of Rochester is accredited by the **Middle States Association of Colleges and Schools, Commission on Higher Education**, and the **New York State Board of Regents**.

Programs within the University's Schools are accredited by the following agencies:

Accreditation Board of Engineering and Technology, Inc.

Accreditation Council on Graduate Medical Education

American Academy of Microbiology

American Assembly of Collegiate Schools of Business

American Association for Marriage and Family Therapy

American Dental Association

American Psychological Association

Council for Accreditation of Counseling and Related Educational Programs

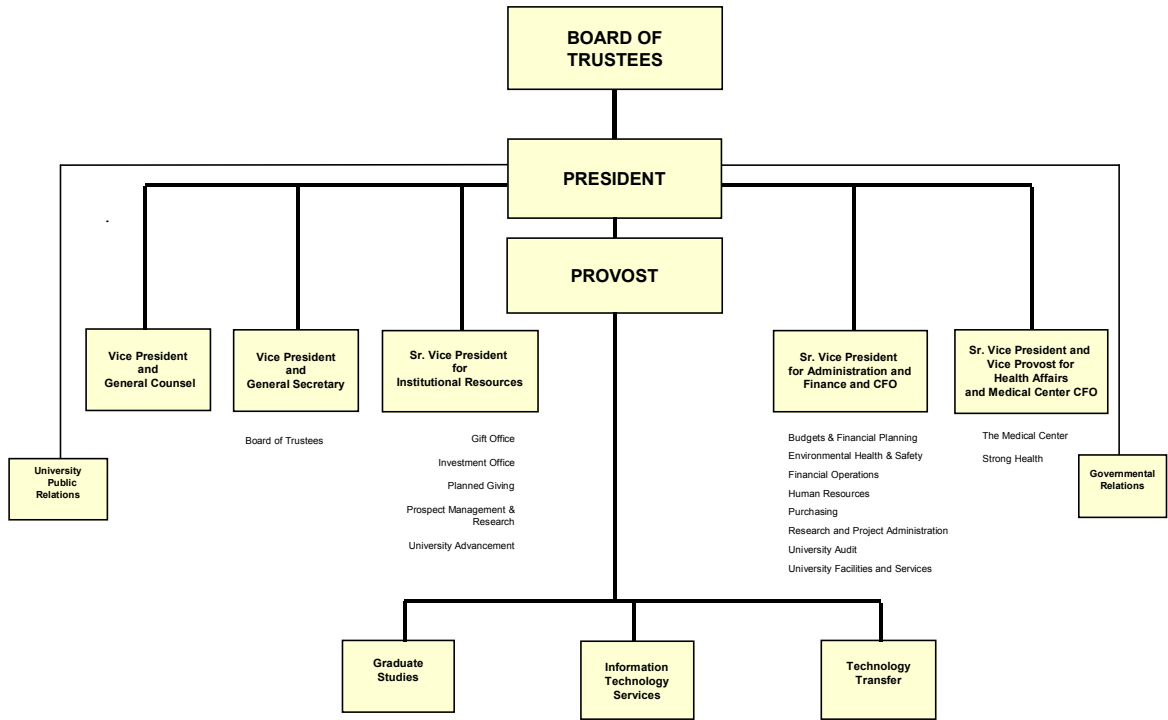
Council on Education for Public Health

Liaison Committee on Medical Education

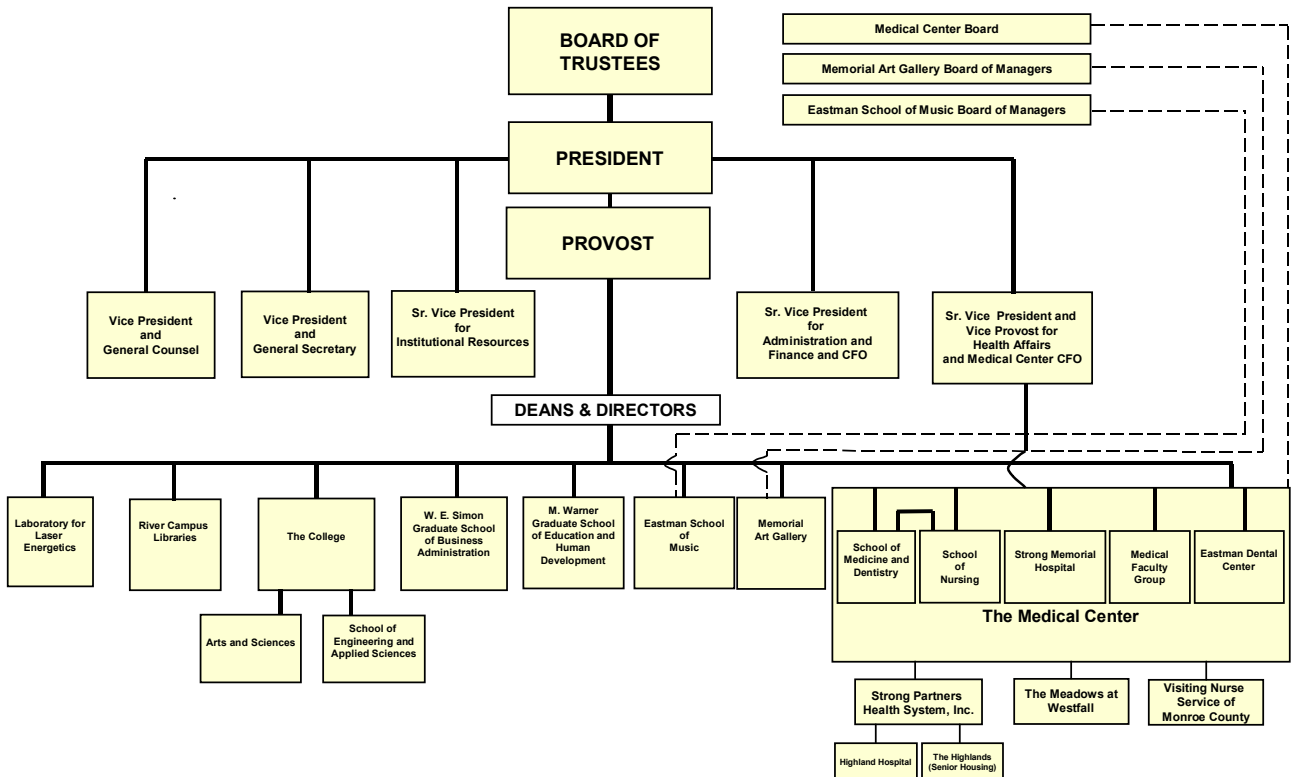
National Association of Schools of Music

National League for Nursing Accrediting Commission

UNIVERSITY OF ROCHESTER
Central Administrative and Support Services



UNIVERSITY OF ROCHESTER
Programs and Divisions



UNIVERSITY OF ROCHESTER
Size of Campus

	1994-95	1995-96	1996-97	1997-98	1998-99	1999-2000	2000-01	2001-02	2002-03	2003-04
Campus	Buildings	Buildings	Buildings	Buildings	Buildings	Buildings	Buildings	Buildings	Buildings	Buildings
River Campus	61	61	55	54	54	54	55	55	55	55
Medical Center	19	21	11	11	12	15	15	18	18	18
South Campus	37	37	55	55	55	55	55	55	59	59
Eastman School & MAG	9	8	8	8	8	8	8	9	10	10
Mt. Hope Campus*	7	8	10	10	10	10	10	10	8	8
Off Campus*	-	-	5	5	5	5	5	6	2	2
UNIVERSITY TOTAL	133	135	144	143	144	147	148	153	152	152

	1994-95	1995-96	1996-97	1997-98	1998-99	1999-2000	2000-01	2001-02	2002-03	2003-04
Campus	Gross Sq. Ft.	Gross Sq. Ft.	Gross Sq. Ft.	Gross Sq. Ft.	Gross Sq. Ft.	Gross Sq. Ft.	Gross Sq. Ft.	Gross Sq. Ft.	Gross Sq. Ft.	Gross Sq. Ft.
River Campus	2,649,830	2,721,764	2,701,989	2,736,853	2,732,791	2,797,970	3,476,917	3,559,028	3,545,144	3,551,925
Medical Center	3,075,168	3,808,231	3,568,415	3,622,862	3,671,545	3,927,449	4,713,086	4,976,951	4,838,345	4,852,337
South Campus	628,400	648,034	900,669	919,177	919,177	913,289	1,067,530	1,094,888	1,111,007	1,110,593
Eastman School & MAG	441,089	441,395	441,395	443,011	443,011	443,011	530,729	540,161	667,372	668,943
Mt. Hope Campus*	122,939	123,094	134,697	189,910	189,910	170,124	194,971	202,918	198,379	198,363
Off Campus*	-	-	20,907	20,907	20,907	20,754	22,279	25,623	4,087	4,087
UNIVERSITY TOTAL	6,917,426	7,742,518	7,768,072	7,932,720	7,977,341	8,272,597	10,005,512	10,399,569	10,364,334	10,386,247

Campus Inclusions (2003-04 definitions):

River Campus is the primary campus for The College, Simon School (Graduate Business) and Warner School (Graduate Education).

Medical Center reports all buildings including Annex, Helen Wood Hall, School of Medicine and Dentistry, Strong Memorial Hospital, Ambulatory Care Facility, Parking Garage, Goler House, Central Utilities, Eastman Dental Center, Kornberg Medical Research, Levine Pavillion, Autoclave Bldg.

South Campus includes Nuclear Structure Research Laboratory, Laboratory for Laser Energetics, Center for Optoelectronics and Imaging, River Road Buildings, Graduate Living Center, University Park, Whipple Park, Intercampus Drive.

Eastman Campus includes Eastman buildings, Eastman Place, Memorial Art Gallery and Cutler Union.

Mt. Hope Includes Towne House, 575, 590, 668, 685 Mt. Hope Ave., Mail Services Building and Mt. Hope Professional Building.

Buildings Off Campus are Mees Observatory, Gannett House.

*Mt. Hope Campus and Off Campus data were combined and reported as "Miscellaneous" prior to 1996-97

Source: University Facilities

UNIVERSITY OF ROCHESTER

Degrees Conferred

Bachelors

	1993-94	1994-95	1995-96	1996-97	1997-98	1998-99	1999-00	2000-01	2001-02	2002-03
Arts & Sciences	916	914	930	840	903	852	842	750	778	893
Engineering & Applied Sciences	143	150	146	137	95	104	106	95	135	153
The College Subtotal	1,059	1,064	1,076	977	998	956	948	845	913	1,046
University College	2	1	2	0	1	0	0	1	0	0
Eastman School of Music	97	109	97	102	99	119	101	90	121	118
School of Nursing	82	79	93	85	101	64	65	57	60	53
University Total	1,240	1,253	1,268	1,164	1,199	1,139	1,114	993	1,094	1,217

Masters

	1993-94	1994-95	1995-96	1996-97	1997-98	1998-99	1999-00	2000-01	2001-02	2002-03
Arts & Sciences	181	182	135	177	155	128	147	126	99	103
Engineering & Applied Sciences	70	82	72	79	58	53	59	57	67	54
The College Subtotal	251	264	207	256	213	181	206	183	166	157
Simon Graduate School of Business	380	362	401	408	427	470	489	434	421	450
Warner Graduate School of Education & Human Development	79	84	73	84	96	63	55	53	61	71
Eastman School of Music	92	73	107	80	97	96	83	87	92	102
School of Medicine & Dentistry	74	66	65	66	82	79	74	84	61	97
School of Nursing	58	73	61	66	67	52	41	49	30	39
University Total	934	922	914	960	982	941	948	890	831	916

Doctorates

	1993-94	1994-95	1995-96	1996-97	1997-98	1998-99	1999-00	2000-01	2001-02	2002-03
Arts & Sciences	117	119	130	98	105	79	95	76	67	71
Engineering & Applied Sciences	38	25	39	31	28	31	30	30	16	24
The College Subtotal	155	144	169	129	133	110	125	106	83	95
Simon Graduate School of Business	7	5	5	7	7	2	4	3	7	4
Warner Graduate School of Education & Human Development	14	13	15	8	12	4	7	14	9	5
Eastman School of Music	27	35	26	29	26	26	36	24	44	33
School of Medicine & Dentistry	128	135	137	123	143	138	136	130	147	129
<i>Subtotal Doctorates</i>	<i>31</i>	<i>40</i>	<i>42</i>	<i>31</i>	<i>39</i>	<i>39</i>	<i>34</i>	<i>45</i>	<i>38</i>	<i>49</i>
<i>Subtotal MD's</i>	<i>97</i>	<i>95</i>	<i>95</i>	<i>92</i>	<i>104</i>	<i>99</i>	<i>102</i>	<i>85</i>	<i>109</i>	<i>80</i>
School of Nursing	2	5	2	3	3	5	5	4	4	4
University Total	333	337	354	299	324	285	313	281	294	270

All Degrees

	1993-94	1994-95	1995-96	1996-97	1997-98	1998-99	1999-00	2000-01	2001-02	2002-03
Arts & Sciences	1,214	1,215	1,195	1,115	1,163	1,059	1,084	952	944	1,067
Engineering & Applied Sciences	251	257	257	247	181	188	195	182	218	231
The College Subtotal	1,465	1,472	1,452	1,362	1,344	1,247	1,279	1,134	1,162	1,298
Simon Graduate School of Business	387	367	406	415	434	472	493	437	428	454
Warner Graduate School of Education & Human Development	93	97	88	92	108	67	62	67	70	76
University College	2	1	2	0	1	0	0	1	0	0
Eastman School of Music	216	217	230	211	222	241	220	201	257	253
School of Medicine & Dentistry	202	201	202	189	225	217	210	214	208	226
School of Nursing	142	157	156	154	171	121	111	110	94	96
University Total	2,507	2,512	2,536	2,423	2,505	2,365	2,375	2,164	2,219	2,403

Source: Student Information System

UNIVERSITY OF ROCHESTER
Degrees Conferred - Undergraduate Majors Completed
 By School, Double Majors Counted Twice*

	2000-01	2001-02	2002-03
THE COLLEGE			
Arts & Sciences			
African & African-American Studies	-	-	2
American Sign Language	7	8	6
Anthropology	10	12	10
Art & Art History	15	11	12
Art History	9	7	6
Studio Arts	6	4	6
Biological Sciences	73	79	98
Biochemistry	13	7	14
Cell & Development	6	8	9
Ecology & Evol Biol	1	8	6
Microbiology	20	15	25
Molecular Genetics	4	13	17
Neuroscience	29	28	27
Biology	56	45	66
Brain & Cognitive Science	16	21	23
Chemistry	15	20	17
Clinical & Social Psychology	115	128	142
Cognitive Science	3	2	2
Computer Science	32	30	46
Earth & Environmental Sciences	17	12	12
Biology-Geology	3	2	-
Environmental Sciences	10	4	5
Environmental Studies	3	5	2
Geological Sciences	1	1	5
Economics	123	142	164
English	42	54	65
Film Studies	20	15	7
Film and Media Studies	3	15	7
Film Studies	17	-	-
Health & Society	39	35	36
History	54	62	48
Interdepartmental	8	8	10
Linguistics	3	7	4
Mathematics	34	39	56
Applied Mathematics	2	2	13
Computer Science:Mathematics	2	-	-
Mathematics	28	36	43
Mathematics-Statistics	2	1	-
Modern Languages & Cultures	31	34	49
Comparative Literature	2	-	1
French	3	5	10
German	8	2	4
Japanese	6	8	11
Russian	5	5	4
Spanish	7	14	19
Music	6	3	11
Philosophy	14	12	8
Physics and Astronomy	15	21	22
Physics	11	18	15
Physics and Astronomy	4	3	7
Political Science	100	102	107
Religion & Classics	26	25	43
Classics	4	2	5
Religious Studies	22	23	38
Russian Studies	2	3	-
Statistics	6	8	12
Women's Studies	6	4	5
Other: General Science, retroactive	-	-	1
SUBTOTAL	888	942	1,084

UNIVERSITY OF ROCHESTER
Degrees Conferred - Undergraduate Majors Completed
 By School, Double Majors Counted Twice*

2000-01 2001-02 2002-03

THE COLLEGE

School of Engineering and Applied Sciences

Biomedical Engineering	16	31	36
Chemical Engineering	28	34	32
Electrical and Computer Engineering	-	-	24
Electrical Engineering	12	28	5
Engineering Science	-	-	1
Geomechanics	1	-	1
Interdepartmental Engineering	1	-	1
Mechanical Engineering	26	21	28
Optics	11	21	25
SUBTOTAL	95	135	153

THE COLLEGE SUBTOTAL	983	1,077	1,237
-----------------------------	------------	--------------	--------------

Eastman School of Music

Applied Music	72	109	97
Composition	4	3	6
Jazz Studies & Contemporary Media	8	3	11
Music Education - General	3	1	3
Music Education - Instrumental	12	8	9
Music Education - Vocal	1	3	2
Music Theory	4	-	1
Musical Arts	-	1	-
SUBTOTAL	104	128	129

School of Nursing	57	60	53
--------------------------	-----------	-----------	-----------

University College

Social Science	1	-	-
SUBTOTAL	1	-	-

TOTAL UNIVERSITY	1,145	1,265	1,419
-------------------------	--------------	--------------	--------------

*Totals on this table are greater than the total number of degrees conferred because double majors are reported here.
 The University awards the following Bachelor's Degrees: BA, BS, BM

Source: Student Information System

UNIVERSITY OF ROCHESTER
Degrees Conferred - Graduate Majors Completed
By School, Double Majors Counted Twice*

	2000-01		2001-02		2002-03	
	Mast.	Doc.	Mast.	Doc.	Mast.	Doc.
THE COLLEGE - Arts and Sciences						
Biology	8	4	11	2	5	7
Brain & Cognitive Sciences	3	3	2	4	6	7
Chemistry	19	8	17	8	10	13
Clinical & Social Psychology	3	7	8	6	6	2
Computer Science	9	3	8	5	11	7
Earth & Environ Sciences (Geological)	8	-	4	3	2	1
Economics	12	16	12	9	12	9
English	11	9	7	3	16	7
History	1	5	1	6	1	3
Linguistics	-	1	-	-	1	1
Mathematics	4	1	5	1	5	-
Mathematics	4	1	4	1	5	-
Mathematics - Statistics	-	-	1	-	-	-
Modern Languages & Cultures	1	2	1	3	1	-
Comparative Literature	1	2	1	3	1	-
Philosophy	4	2	2	1	2	1
Physics & Astronomy	27	8	13	7	11	8
Physics	27	8	13	6	11	7
Physics & Astronomy	-	-	-	1	-	1
Political Science	10	5	2	3	7	4
Visual and Cultural Studies	6	3	6	7	7	4
SUBTOTAL	126	77	99	68	103	74

THE COLLEGE - School of Engineering and Applied Sciences

Biomedical Engineering	4	1	10	1	10	3
Chemical Engineering	6	3	8	-	4	-
Electrical & Computer Engineering	-	-	-	-	1	-
Electrical Engineering	15	7	22	3	12	7
Materials Science	5	9	2	2	1	3
Mechanical Engineering	11	3	14	5	8	2
Optics	16	7	11	5	18	9
SUBTOTAL	57	30	67	16	54	24

THE COLLEGE TOTAL

183	107	166	84	157	98
------------	------------	------------	-----------	------------	-----------

Simon Graduate School of Business Administration

Master of Science	18	-	14	-	25	-
Business Administration	283	3	262	7	298	4
Business Admin. - Executive Development	53	-	50	-	39	-
Business Admin. - Bern, Switzerland	45	-	48	-	50	-
Business Admin. - Nijenrode, Netherlands	35	-	47	-	38	-
SUBTOTAL	434	3	421	7	450	4

UNIVERSITY OF ROCHESTER
Degrees Conferred - Graduate Majors Completed
By School, Double Majors Counted Twice*

	2000-01		2001-02		2002-03	
	Mast.	Doc.	Mast.	Doc.	Mast.	Doc.
Warner Graduate School of Education and Human Development						
Counseling & Human Devel, CounsTrack	1	-	4	-	-	-
Counseling & Human Develop	10	2	6	1	3	1
Curriculum Elementary	10	-	8	-	8	-
Curriculum General	3	-	7	-	2	-
Curriculum Secondary English	6	-	5	-	2	-
Curriculum Secondary for Lang	3	-	3	-	-	-
Curriculum Secondary Math	1	-	-	-	1	-
Curriculum Secondary Science	3	-	6	-	-	-
Curriculum Secondary Soc Stud	3	-	3	-	4	-
Developmental Disorders	1	-	-	-	-	-
Education	-	2	-	-	-	-
Education Administration	2	3	2	1	1	2
Higher Education	2	2	4	2	1	1
Human Devel General	1	-	5	-	1	-
Human Devel In Ed Contexts	-	2	-	2	-	-
MS Administration (GEN)	-	-	-	-	1	-
MS Administration (SAS)	-	-	-	-	2	-
MS Biology (7-12)	-	-	-	-	4	-
MS Chemistry (5-12)	-	-	-	-	1	-
MS Chemistry (7-12)	-	-	-	-	2	-
MS Community Counseling	-	-	-	-	2	-
MS Community Counseling (3+2)	-	-	-	-	1	-
MS Higher Ed	-	-	-	-	4	-
MS Human Development	-	-	-	-	6	-
MS Physics (7-12)	-	-	-	-	1	-
MS School Counseling	-	-	-	-	6	-
MS School Counseling (3+2)	-	-	-	-	2	-
MS School Counseling (Comm)	-	-	-	-	1	-
MS Spanish (7-12)	-	-	-	-	1	-
MS Spanish (7-12)	-	-	-	-	2	-
MS Teaching & Curriculum	-	-	-	-	7	-
School Guidance	4	-	1	-	-	-
Teaching Curriculum	-	1	-	2	-	-
Teaching Curriculum & Change	-	2	-	1	-	1
Teaching in English	-	-	1	-	1	-
Teaching in History	3	-	2	-	-	-
TESOL	-	-	4	-	4	-
SUBTOTAL	53	14	61	9	71	5

Eastman School of Music

Composition	-	1	-	4	4	-
Conducting	3	-	4	3	1	2
Jazz Studies & Contemp Media	4	-	4	-	6	-
Jazz Studies & Contemp Media-Writing	-	-	-	-	3	-
Music Education	11	1	13	2	13	2
Music Theory	3	2	1	10	7	-
Musicology	3	1	4	1	3	1
Performance & Literature	58	17	65	24	62	25
Piano Accompanying & Chamber Music	3	2	1	-	1	3
Theory Pedagogy	3	-	1	-	3	-
SUBTOTAL	88	24	93	44	103	33

UNIVERSITY OF ROCHESTER
Degrees Conferred - Graduate Majors Completed
By School, Double Majors Counted Twice*

	2000-01		2001-02		2002-03	
	Mast.	Doc.	Mast.	Doc.	Mast.	Doc.
School of Medicine and Dentistry						
Anatomy	-	4	2	-	-	2
Biochemistry	8	8	8	3	6	4
Biophysics	6	4	4	2	3	6
Dental Science	-	-	-	-	-	-
Environmental Studies	5	-	-	-	-	-
Genetics	2	-	2	-	-	2
Health Services Research	-	3	-	4	-	2
Industrial Hygiene	3	-	-	-	-	-
Marriage & Family Therapy	-	-	2	-	-	-
Microbiology & Immunology	14	7	13	12	24	10
Neuroscience	5	2	2	6	8	3
Pathology	16	4	4	2	13	8
Pharmacology	8	4	4	4	8	6
Physiology	-	1	1	1	-	-
Public Health	14	-	11	-	23	-
Statistics	2	1	2	2	3	4
Toxicology	2	7	6	2	9	2
SUBTOTAL without MDs	85	45	61	38	97	49
MD's (First Professional)	-	85	-	109	-	80
SUBTOTAL with MDs	85	130	61	147	97	129
School of Nursing						
Acute Cardio-Pulmonary Nurse Practitioner	1	-	-	-	-	-
Acute Care Oncology Nurse Practitioner	1	-	-	-	-	-
Acute Care Cardiovascular	2	-	-	-	4	-
Acute Critical Care Nurse Practitioner	3	-	5	-	2	-
Adult Nurse Practitioner	7	-	8	-	10	-
Care of Children & Families	5	-	7	-	5	-
Family Nurse Practitioner	8	-	6	-	10	-
Neonatal Nurse Practitioner	3	-	1	-	1	-
Nurse Midwifery	5	-	-	-	-	-
Nursing	-	4	-	4	-	4
Ped Nur Prac/Psych Mental Health	-	-	-	-	1	-
Psych Mental Health	8	-	3	-	6	-
Women's Health Care	6	-	-	-	-	-
SUBTOTAL	49	4	30	4	39	4
TOTAL UNIVERSITY	892	282	832	295	917	273

*Totals on this table are greater than the total number of degrees conferred because double majors are reported here.

The University awards the following Master's and Doctorate degrees:

MA, MS, MM, MPH, MBA, MAT, PhD, EdD, DMA

Source: Student Information System

UNIVERSITY OF ROCHESTER
Certificates Conferred

	2000-01	2001-02	2002-03
With Bachelor's Degrees			
Actuarial Studies	6	7	8
Asian Studies	1	1	0
International Relations	23	17	9
Polish & Central European Studies	2	1	3
Management Studies	126	134	163
Mathematical Modeling in Political Science & Economics	0	0	1
Biotechnology	1	1	3
Total	159	161	187
Post Master's Certificates			
Dentistry	41	40	41
Nursing	15	10	11
Total	56	50	52

Sources: College Center for Academic Support; School of Nursing, Eastman Dental Center

UNIVERSITY OF ROCHESTER
Admissions Activity

Fall	1994	1995	1996	1997	1998	1999	2000	2001	2002	2003
------	------	------	------	------	------	------	------	------	------	------

College: First Time Full-time Freshmen (Arts & Sciences, Engineering & Applied Sciences)

Number of Applicants	8,393	8,385	9,057	9,147	8,782	8,656	10,082	9,579	8,682	10,486
Number Offered	5,475	5,304	4,854	5,166	5,189	5,714	5,086	5,041	4,846	5,096
Entered	1,129	1,085	904	799	968	1,087	930	1,008	934	976

University: First Time Full-time Freshmen (College and Eastman School of Music)

Number of Applicants	9,138	9,195	9,970	9,983	9,760	9,623	11,133	10,602	9,606	11,381
Number Offered	5,744	5,608	5,138	5,402	5,771	5,975	5,335	5,294	5,091	5,385
Entered	1,246	1,223	1,037	908	1,077	1,221	1,051	1,117	1,063	1,124

University: Graduate Students

Number of Applicants	6,626	6,678	6,822	6,839	7,103	6,785	7,798	7,704	9,229	10,020
Number Offered	1,984	1,938	1,956	1,908	1,902	1,723	1,855	1,945	1,804	1,981
Entered	980	985	977	945	947	971	860	1,007	911	997

First Professional Students (M.D. Degree)

Number of Applicants	3,233	3,959	4,089	3,914	7,018	5,865	5,111	4,305	3,845	3,969
Number Offered	237	240	248	276	248	288	252	280	281	275
Entered	98	99	99	100	100	100	98	100	100	100

Source: Admissions Offices; Graduate Dean

UNIVERSITY OF ROCHESTER
Enrollment: Full- and Part-time Students, Fall Semester

Undergraduate

	1994-95	1995-96	1996-97	1997-98	1998-99	1999-00	2000-01	2001-02	2002-03	2003-04
Arts & Sciences*	4,223	4,197	3,957	3,695	3,532	3,527	3,540	3,690	3,702	3,625
Engineering & Applied Sciences**	325	277	220	208	218	208	222	280	269	237
The College Subtotal	4,548	4,474	4,177	3,903	3,750	3,735	3,762	3,970	3,971	3,862
Eastman School of Music	468	493	491	462	468	485	481	475	482	480
School of Nursing	190	215	217	189	159	145	143	122	104	119
Subtotal	5,206	5,182	4,885	4,554	4,377	4,365	4,386	4,567	4,557	4,461
Non-matriculated	290	238	159	146	126	135	138	149	173	149
Total	5,496	5,420	5,044	4,700	4,503	4,500	4,524	4,716	4,730	4,610

Graduate and Professional Students

	1994-95	1995-96	1996-97	1997-98	1998-99	1999-00	2000-01	2001-02	2002-03	2003-04
Arts & Sciences	888	826	766	721	660	632	600	638	627	671
Engineering & Applied Sciences	291	270	255	244	248	238	225	220	271	308
The College Subtotal	1,179	1,096	1,021	965	908	870	825	858	898	979
Simon Graduate School of Business	751	682	688	748	764	780	727	744	804	732
Warner Graduate School of Education & Human Development	232	226	244	236	204	226	259	274	293	310
Eastman School of Music	345	345	341	355	329	315	331	334	359	392
School of Medicine & Dentistry, M.D.	411	402	405	419	419	412	412	418	417	439
School of Medicine & Dentistry, M.S. & Ph.D.	352	357	347	357	342	371	380	433	451	484
School of Nursing	255	232	241	199	171	158	157	140	149	129
Subtotal	3,525	3,340	3,287	3,279	3,137	3,132	3,091	3,201	3,371	3,465
Non-matriculated	762	829	530	550	605	515	582	573	524	534
Total	4,287	4,169	3,817	3,829	3,742	3,647	3,673	3,774	3,895	3,999

All

	1994-95	1995-96	1996-97	1997-98	1998-99	1999-00	2000-01	2001-02	2002-03	2003-04
Arts & Sciences	5,111	5,023	4,723	4,416	4,192	4,159	4,140	4,328	4,329	4,296
Engineering & Applied Sciences	616	547	475	452	466	446	447	500	540	545
The College Subtotal	5,727	5,570	5,198	4,868	4,658	4,605	4,587	4,828	4,869	4,841
Simon Graduate School of Business	751	682	688	748	764	780	727	744	804	732
Warner Graduate School of Education & Human Development	232	226	244	236	204	226	259	274	293	310
Eastman School of Music	813	838	832	817	797	800	812	809	841	872
School of Medicine & Dentistry, M.D.	411	402	405	419	419	412	412	418	417	439
School of Medicine & Dentistry, M.S. & Ph.D.	352	357	347	357	342	371	380	433	451	484
School of Nursing	445	447	458	388	330	303	300	262	253	248
University, Subtotal	8,731	8,522	8,172	7,833	7,514	7,497	7,477	7,768	7,928	7,926
Non-matriculated	1,052	1,067	689	696	731	650	720	722	697	683
University Total	9,783	9,589	8,861	8,529	8,245	8,147	8,197	8,490	8,625	8,609

*Older dates may include a small number of students enrolled in University College (a unit which has been phased out). Distribution of Engineering majors in the College

**Distribution of Engineering majors in the College has been revised from prior reporting.

This table shows only Junior and Senior Engineering majors in Engineering & Applied Sciences.

Source: Student Information System

UNIVERSITY OF ROCHESTER

Enrolled Students: Declared Ethnic Origin*

FALL 2003	TOTAL		Nonresident alien		Black, non-Hispanic		American Indian/Alaska Native		Asian/Pacific Islander		Hispanic		White, non-Hispanic		Unknown	
	M	W	M	W	M	W	M	W	M	W	M	W	M	W	M	W
	Undergraduates-Full Time															
First-time Freshmen	581	510	31	19	29	26	1	3	67	58	20	34	342	311	91	59
All other Freshmen	26	16	1	2	1	1	0	0	2	1	5	2	14	10	3	0
Sophomores	568	489	21	11	18	23	1	3	74	60	21	20	358	314	75	58
Juniors	610	492	18	12	24	29	1	3	87	49	19	21	378	311	83	67
Seniors	562	498	19	14	25	30	2	2	70	51	19	13	356	315	71	73
Unclassified	4	3	4	3	0	0	0	0	0	0	0	0	0	0	0	0
SUBTOTAL	2,351	2,008	94	61	97	109	5	11	300	219	84	90	1,448	1,261	323	257
Undergraduates-Part Time																
Sophomores	0	0	0	0	0	0	0	0	0	0	0	0	0	0	0	0
Juniors	19	64	0	1	0	3	0	3	0	2	1	0	17	48	1	7
Seniors	17	6	2	0	0	0	0	0	1	1	1	1	10	4	3	0
Unclassified	35	81	0	0	1	9	0	1	2	2	1	4	25	60	6	5
SUBTOTAL	71	151	2	1	1	12	0	4	3	5	3	5	52	112	10	12
TOTAL Undergraduates	2,422	2,159	96	62	98	121	5	15	303	224	87	95	1,500	1,373	333	269
First Professional																
First-time	46	54	0	0	3	7	0	0	9	11	0	0	30	34	4	2
All others	153	183	0	0	12	20	3	0	26	37	4	9	107	114	1	3
TOTAL First Professional	199	237	0	0	15	27	3	0	35	48	4	9	137	148	5	5
Graduate Students-Full Time																
First-time Masters/Doctoral	428	320	167	115	11	12	0	0	20	12	15	9	172	146	43	26
All others	1,019	669	428	268	19	24	0	1	27	46	16	13	408	270	121	47
Unclassified	7	5	7	4	0	0	0	0	0	0	0	0	0	1	0	0
Beyond First Doctoral	0	0	0	0	0	0	0	0	0	0	0	0	0	0	0	0
SUBTOTAL	1,454	994	602	387	30	36	0	1	47	58	31	22	580	417	164	73
Graduate Students-Part Time																
First-time Masters/Doctoral	46	77	4	4	2	4	0	1	0	2	0	2	33	59	7	5
All others	182	267	8	5	2	11	1	1	15	14	4	9	137	217	15	10
Unclassified	232	274	25	8	7	19	0	1	12	16	7	9	155	212	26	9
SUBTOTAL	460	618	37	17	11	34	1	3	27	32	11	20	325	488	48	24
TOTAL Graduates	1,914	1,612	639	404	41	70	1	4	74	90	42	42	905	905	212	97
Total University	4,535	4,008	735	466	154	218	9	19	412	362	133	146	2,542	2,426	550	371

* This report indicates the ethnic origin of students, as reported by the students. Definitions are below.

Numbers 1-5 apply to all except those who are Nonresident aliens.

1. Asian/Pacific Islander: A person having origins in any of the original peoples of the Far East, Southeast Asia, the Indian Subcontinent, or Pacific Islands
2. Black, non-Hispanic: A person having origins in any of the black racial groups of Africa (except those of Hispanic origin)
3. White, non-Hispanic: A person having origins in any of the original peoples of Europe, North Africa, or the Middle East (except those of Hispanic origin)
4. Hispanic: A person of Mexican, Puerto Rican, Cuban, Central or South American, or other Spanish culture or origin, regardless of race
5. American Indian/Alaska Native: A person having origins in any of the original peoples of North America and who maintains cultural identification through tribal affiliation or community recognition
6. Nonresident alien: A person who is not a citizen or national of the United States and who is in this country on a visa or temporary basis and does not have the right to remain indefinitely
7. Race/Ethnicity Unknown: Used only if the student did not select a racial-ethnic designation and the institution finds it impossible to place the student in one of the aforementioned racial/ethnic categories
Note that full-time graduate students, unknown race/ethnicity, includes 1 unknown gender reported with males

Source: IPEDS-EF1 Report. Totals may differ from internal University Student Information System reports.

UNIVERSITY OF ROCHESTER
Geographic Distribution of Full-time Students
FALL 2003

		ALL		Arts & Sciences		Engineering		Simon School	Warner School	Eastman		SMD	Nursing		Eastman Dental	
		UGs	Grads	UGs	Grads	UGs	Grads	Grads	Grads	UGs	Grads	Grads	UGs	Grads	Grads	
Middle Atlantic Region	District of Columbia	14	5	13	1			1		1						
	Delaware	10	4	9	2			1		1	1					
	Maryland	102	22	88	4	2	1	3		11	5		9	1		
	New Jersey	233	43	199	10	12	8	15		21	9		1	1		
	New York	2013	614	1766	118	116	61	142	82	88	39		139	43	31	2
	NY % of Total	46%	25%													
	Pennsylvania	229	64	190	24	11	6	7	2	28	11		13		1	
	West Virginia	8	2	7		1	1						1			
New England Region	Connecticut	145	21	124	6	5	2	3	1	16	6		3			
	Massachusetts	228	46	205	11	12	8	13	1	10	6		7	1		
	Maine	34	7	30	1	2	1			2			5			
	New Hampshire	38	3	32	2	2				4			1			
	Rhode Island	19	5	13	2	1			1	1			2			
	Vermont	19	10	15	4	1	3			3	1		2			
Great Lakes Region	Illinois	100	24	70	9	3		5		27	6		4			
	Indiana	26	6	19	3	1				6	1		2			
	Michigan	39	24	25	9	3	4	2	1	11	5		3			
	Ohio	116	36	95	13	4	2	3		17	14		4			
	Wisconsin	27	16	13	7	1	1			12	6		2	1		
South-eastern Region	Alabama	7	5	4	3	1				2	2					
	Arkansas	2	2	2	1						1					
	Florida	47	24	33	5	4	3	3		9	9		4	1		
	Georgia	22	15	11	4		1	1		11	7		1		1	
	Kentucky	4	3	4	1		1				1					
	Louisiana	13	4	11		1	1			1	2		1			
	Mississippi	2	2	1	1					1			1			
	North Carolina	20	20	8	3	1		4		11	11		2			
	South Carolina	11	7	4	3		1			7	2		1			
	Tennessee	13	11	8	3					5	6		2			
	Virginia	45	22	32	7	2	1	4	1	11	9					
Central Region	Iowa	7	6	3	2					4	2		2			
	Kansas	4	3	3	2					1			1			
	Minnesota	21	19	12	6	2	1	1		7	9		2			
	Missouri	28	14	24	7		2			4	4		1			
	North Dakota	3	2	3	1						1					
	Nebraska	5	2	3						2	2					
	South Dakota	3	1	3							1					
South-western Region	Arizona	12	5	7	1					5	1		1		2	
	New Mexico	6	4	4	3		1			2						
	Oklahoma	7	5	6	1					1	3		1			
	Texas	68	31	49	7	3		8	1	16	13		2			
Mountain Region	Colorado	30	12	20	3	6	3	2		3	3		1	1		
	Idaho	4	1	2						2	1					
	Montana	5	2	4	1	1					1					
	Nevada	5	2	3				1		2			1			
	Utah	5	16	3	2		1	3		2	4		5		1	
	Wyoming	1	1	1							1					
Pacific Region	Alaska	2	1	1	1	1										
	California	102	84	63	30	4	2	30	2	31	14		6	4		
	Hawaii	5	2	5							1		1			
	Oregon	16	13	10	6		1	2		6	4					
	Washington	37	20	25	4	3	3	4		8	4		5	1		
Other	Guam	1	0	1												
	Puerto Rico	4	4	4					1		1		2			
	Virgin Islands	3	0	3												
	AE+	4	1	4					1							
	Unknown	0	6		2		1						1			2
	Foreign	358	1083	276	314	17	162	270	13	63	132		163	2	5	24
	Military Base	25	2	22		2				1	2					
TOTAL	4,353	2,409	3,595	650	225	284	528	107	477	364	407	56	41	28		

+ AE = Military Assignment
Source: Student Information System

UNIVERSITY OF ROCHESTER

UNDERGRADUATE ENROLLMENT BY MAJOR - OFFICIAL & UNOFFICIAL

By School, All Students, Fall Semester

	2001-02		2002-03		2003-04	
	Unofficial	Official	Unofficial	Official	Unofficial	Official
THE COLLEGE						
Arts & Sciences						
African & African-American Studies	-	-	-	-	-	3
American Sign Language	4	13	4	15	6	18
Anthropology	15	26	13	19	17	21
Art & Art History	9	16	15	26	16	24
Art History	6	5	10	10	9	9
Studio Arts	3	11	5	16	7	15
Biological Sciences	174	182	200	178	213	165
Biochemistry	67	25	78	22	79	25
Cell & Development	14	19	21	19	23	22
Ecology & Evol Biol	4	14	7	14	11	20
Microbiology	16	42	8	44	12	23
Molecular Genetics	40	28	47	31	48	34
Neuroscience	33	54	39	48	40	41
Biology	314	111	286	111	337	88
Brain & Cognitive Sciences	21	40	23	44	22	42
Chemistry	60	38	56	34	47	38
Clinical & Social Psychology	137	232	150	253	155	246
Cognitive Science	11	4	4	3	4	-
Computer Science	153	82	128	96	112	85
Earth & Environmental Sciences	23	23	22	25	23	18
Biology-Geology	4	3	3	2	2	1
Environmental Sciences	12	7	12	8	12	6
Environmental Studies	3	4	4	1	6	-
Geological Sciences	4	9	3	14	3	11
Economics	104	260	118	254	120	209
English	71	109	82	129	87	126
Film and Media Studies	13	19	10	19	15	25
Health & Society	17	64	15	69	19	57
History	48	90	66	77	65	80
Integrated Sciences	-	-	1	-	1	-
Interdepartmental	6	7	4	14	4	13
Linguistics	1	9	4	8	9	14
Mathematics	72	90	69	99	70	91
Applied Mathematics	3	9	4	13	11	19
Computer Science:Applied Math.	-	-	-	-	-	-
Computer Science:Mathematics	1	-	-	-	-	-
Mathematics	65	78	61	84	56	70
Mathematics-Statistics	3	3	4	2	3	2
Modern Languages & Cultures	15	74	22	81	24	81
Comparative Literature	-	1	-	1	1	2
French	6	9	8	13	10	12
German	3	9	2	12	1	8
Japanese	1	12	3	14	3	14
Russian	1	7	1	5	1	8
Spanish	4	36	8	36	8	37
Music	12	13	11	15	15	14
Philosophy	16	20	15	17	11	32
Physics and Astronomy	52	48	80	39	83	38
Physics	39	33	56	27	57	30
Physics and Astronomy	13	15	24	12	26	8
Political Science	97	175	114	189	115	188
Religion & Classics	10	55	10	67	9	52
Classics	5	4	2	7	3	2
Religious Studies	5	51	8	60	6	50
Russian Studies	1	2	1	-	1	5
Statistics	3	14	3	12	1	14
Women's Studies	-	4	-	4	1	3
Miscellaneous	441	-	410	-	341	-
3-2 Simon	11	-	8	-	9	-
Unknown	430	-	402	-	332	-
SUBTOTAL	1,900	1,820	1,936	1,897	1,943	1,790

UNIVERSITY OF ROCHESTER
UNDERGRADUATE ENROLLMENT BY MAJOR - OFFICIAL & UNOFFICIAL
By School, All Students, Fall Semester

	2001-02		2002-03		2003-04	
	Unofficial	Official	Unofficial	Official	Unofficial	Official
THE COLLEGE						
School of Engineering and Applied Sciences						
Biomedical Engineering	96	71	89	66	96	68
Chemical Engineering	46	52	34	45	35	32
Electrical & Computer Engineering	116	38	87	49	75	50
Engineering Science	7	2	22	1	14	3
Geomechanics	5	1	2	2	2	3
Interdepartmental Engineering	23	-	5	1	2	2
Mechanical Engineering	59	49	73	45	77	43
Optics	46	46	36	47	44	40
SUBTOTAL	398	259	348	256	345	241
THE COLLEGE SUBTOTAL	2,298	2,079	2,284	2,153	2,288	2,031
Eastman School of Music						
Applied Music	-	427	-	422	-	416
Composition	-	19	-	20	-	15
Jazz & Contemp Media	-	27	-	29	-	34
Jazz & Contemp Media - Performance	-	11	-	8	-	2
Jazz & Contemp Media - Writing	-	-	-	-	1	-
Music Education - General	-	11	-	17	-	13
Music Education - Instrumental	-	58	-	56	-	60
Music Education - Vocal	-	18	-	15	-	19
Music Theory	-	6	-	8	-	10
Musical Arts	-	-	-	5	-	5
SUBTOTAL	-	577	-	580	1	574
School of Nursing	-	138	-	122	-	129
University College						
Natural Science	-	1				
SUBTOTAL	-	1				
TOTAL UNIVERSITY	2,298	2,795	2,284	2,855	2,289	2,734

Source: Registrar's reports UR-12(NEW) 10/12/01 (fall '01), 10/11/02 (fall '02) and 10/10/03 (fall '03).

Includes full-, part-, and x-time students.

Notes: Official majors have been declared by the student and approved by the school.

Students with double majors and/or double degrees are counted in each major and/or degree.

X-time indicates students are not registered for course work in the semester. These students are normally enrolled in a 'place-holder' course, which makes them eligible to register for courses at Rochester in a subsequent semester.

UNIVERSITY OF ROCHESTER

Graduate Majors

By School, All Students, Fall Semester (Those with double majors and/or double degrees are counted in each major and/or degree)

	2001-02			2002-03			2002-03		2003-04			2003-04	
	Full	Part	X	Full	Part	X	Masters	Doctoral	Full	Part	X	Masters	Doctoral
THE COLLEGE													
Arts & Sciences													
Biology	48	-	-	41	-	1	-	42	37	-	1	1	37
Brain & Cognitive Science	27	-	1	27	-	-	-	27	21	1	-	1	21
Chemistry	72	1	5	74	1	5	2	78	66	4	2	1	71
Clinical & Social Psychology	44	-	1	49	-	2	-	51	49	-	1	-	50
Computer Science	48	-	1	46	-	3	1	48	46	3	1	-	50
Earth & Environmental Sciences (Geology)	13	-	3	9	1	-	-	10	12	1	-	-	13
Economics	72	-	8	68	-	5	1	72	73	2	2	-	77
English	59	5	9	60	4	9	19	54	58	7	5	19	51
History	35	3	4	35	2	4	9	32	38	3	4	10	35
Interdepartmental	-	-	-	-	1	-	1	-	-	-	-	-	-
Linguistics	1	-	-	2	-	-	1	1	1	-	-	-	1
Mathematics	19	-	-	19	-	1	-	20	28	-	1	3	26
Modern Languages & Cultures, Comp Lit	4	-	1	-	-	1	-	1	2	-	-	2	-
Philosophy	21	-	1	24	1	1	-	26	25	1	-	-	26
Physics and Astronomy (Physics)	106	-	1	106	-	6	3	109	129	2	3	4	130
Political Science	30	-	8	27	-	7	-	34	32	-	6	-	38
Sociology	-	-	1	-	-	-	-	-	-	-	-	-	-
Visual & Cultural Studies	36	1	9	35	1	6	1	41	36	1	2	1	38
SUBTOTAL	635	10	53	622	11	51	38	646	653	25	28	42	664

School of Engineering and Applied Sciences													
Biomedical Engineering	22	-	1	28	-	-	4	24	30	-	-	4	26
Chemical Engineering	21	5	2	34	3	2	14	26	45	5	1	22	29
Electrical Engineering	61	2	5	64	3	3	9	60	82	4	3	19	70
Materials Science	13	4	4	18	2	1	3	18	16	3	-	2	17
Mechanical Engineering	19	5	6	24	7	3	12	22	25	6	-	9	22
Optics	68	4	8	88	4	6	20	78	88	6	5	25	74
SUBTOTAL	204	20	26	256	19	15	62	228	286	24	9	81	238

THE COLLEGE SUBTOTAL	839	30	79	878	30	66	100	874	939	49	37	123	902
-----------------------------	------------	-----------	-----------	------------	-----------	-----------	------------	------------	------------	-----------	-----------	------------	------------

*X-time indicates students are not registered for course work in the semester. These students are normally enrolled in a 'place-holder' course, which makes them eligible to register for courses at Rochester in a subsequent semester.

UNIVERSITY OF ROCHESTER

Graduate Majors

By School, All Students, Fall Semester (Those with double majors and/or double degrees are counted in each major and/or degree)

	2001-02			2002-03			2002-03		2003-04			2003-04	
	Full	Part	X	Full	Part	X	Masters	Doctoral	Full	Part	X	Masters	Doctoral
Simon Graduate School of Business Administration													
Business Administration	467	241	6	489	200	7	630	66	503	164	7	610	64
Business Admin. - Executive Development	103	-	-	79	-	-	79	-	58	-	-	58	-
Business Admin. - Bern, Switzerland	48	-	-	50	-	-	50	-	55	-	-	55	-
Business Admin. - Nijenrode, Netherlands	48	-	-	38	-	-	38	-	22	-	-	22	-
SUBTOTAL	666	241	6	656	200	7	797	66	638	164	7	745	64

Warner Graduate School of Education and Human Development

Warner School through 2002-03	2001-02			2002-03			2002-03	
	Full	Part	X	Full	Part	X	Masters	Doctoral
Administration: General	-	-	-	-	10	2	12	-
Administration: School Admin & Supervisor	-	-	-	1	-	-	1	-
Biology (5-12)	-	-	-	-	1	-	1	-
Biology (7-12)	-	-	-	1	4	-	5	-
Catholic School Admin	-	2	-	-	4	-	4	-
Chemistry (5-12)	-	-	-	1	-	-	1	-
Community Counseling	-	-	-	4	8	-	12	-
Community Counseling (3-2)	-	-	-	-	-	1	1	-
Couns, Fam & Work Life Studies	-	-	-	-	-	-	-	-
Counseling & Human Dev, Counseling Track	3	15	-	1	1	3	-	5
Counseling & Human Develop	12	29	4	7	10	4	3	18
Curriculum Elementary	5	10	-	1	1	-	2	-
Curriculum General	2	10	2	-	1	-	1	-
Curriculum Secondary English	3	-	2	-	3	-	3	-
Curriculum Secondary for Language	1	1	-	-	1	-	1	-
Curriculum Secondary Math	-	3	-	-	1	1	2	-
Curriculum Secondary Science	7	8	2	2	5	1	8	-
Curriculum Secondary Soc Stud	5	5	2	-	2	4	6	-
Early Childhood (B-2)	-	-	-	1	-	-	1	-
Early Childhood Inclusion (B-2)	-	-	-	1	-	-	1	-
Education Administration	4	48	6	1	46	9	2	54
Elementary (1-6)	-	-	-	5	-	-	5	-
Elementary Inclusion (1-6)	-	-	-	1	-	-	1	-
Elementary Inclusion Prof	-	-	-	-	1	-	1	-
English (7-12)	-	-	-	1	1	-	2	-
Higher Education	9	22	5	11	20	7	12	26
Human Devel. Community Agency Counseling	-	1	-	-	-	-	-	-
Human Devel. in Ed. Contexts	4	2	4	6	7	4	-	17
Human Development : General	1	11	3	1	6	2	9	-
Math (5-12)	-	-	-	1	-	-	1	-
Math Ext. (5-6)	-	-	-	-	1	-	1	-
Math Inclusion (5-12)	-	-	-	1	-	-	1	-
Psychological Development	-	1	-	-	1	-	1	-
School Counseling	-	-	-	7	22	-	29	-
School Counseling: Community	-	-	-	3	2	1	6	-
School Guidance	-	2	-	2	1	-	3	-
Social Studies (7-12)	-	-	-	1	-	-	1	-
Social Studies Prof	-	-	-	-	1	-	1	-
Spanish (7-12)	-	-	-	2	1	-	3	-
Teaching and Curriculum	-	-	-	3	9	4	16	-
Teaching Curriculum	2	18	5	2	15	7	-	24
Teaching Curriculum & Change	10	10	6	12	14	9	-	35
Teaching in English	2	-	-	1	1	-	2	-
Teaching in History	1	-	-	1	-	-	1	-
Teaching in Mathematics	-	-	-	1	-	-	1	-
TESOL	3	1	-	2	3	-	5	-
Thought & Policy	3	1	-	1	2	-	-	3
SUBTOTAL	77	200	41	86	206	59	169	182

UNIVERSITY OF ROCHESTER

Graduate Majors

By School, All Students, Fall Semester (Those with double majors and/or double degrees are counted in each major and/or degree)

Warner School New Program Terminology (Short Title)	2003-04			2003-04	
	Full	Part	X	Masters	Doctoral
MS-Administration (Gen)	-	1	-	1	-
EdD-Administration (Gen)	1	26	14	-	41
MS-Administration (SAS)	1	9	3	13	-
EdD-Administration (SAS)	1	4	1	-	6
MS-Administration (Cath)	-	8	-	8	-
EdD-Administration (SDA)	-	1	-	-	1
PhD-Thought & Policy	2	5	-	-	7
EdD-Counseling	4	6	5	-	15
PhD-Counseling	3	1	1	-	5
MS-Community Counseling	5	7	3	15	-
Curriculum Secondary English	-	-	2	2	-
Curriculum Secondary Soc Stud	-	2	1	3	-
Curriculum Secondary Science	-	1	1	2	-
Curriculum Secondary Math	-	-	1	1	-
MS-School Counseling	18	25	2	45	-
MS-School Counseling+Comm	8	5	-	13	-
MS-Human Development	2	2	-	4	-
EdD-Human Development	1	3	2	-	6
PhD-Human Development	6	8	3	-	17
MS-Higher Ed	3	13	-	16	-
EdD-Higher Ed	5	11	4	-	20
PhD-Higher Ed	6	2	2	-	10
MS-Elementary Prof	-	1	-	1	-
MS-Elementary/I Prof	-	2	-	2	-
MS-English Prof	-	1	-	1	-
MS-Social Studies Prof	-	1	-	1	-
MS-D/Social Studies 7-12T	1	-	-	1	-
MS-Math Prof	-	4	-	4	-
MS-Math ext5-6	-	1	-	1	-
MS-Physics Prof	-	1	-	1	-
MS-Spanish Prof	-	1	-	1	-
MS-Literacy B-6	1	2	-	3	-
MS-Spanish 7-12T	-	1	-	1	-
MS-Early Childhood B-2	-	1	-	1	-
MS-Early Childhood/I B-2	-	1	-	1	-
MS-Elementary 1-6	1	2	-	3	-
MS-Elementary/I 1-6	-	1	-	1	-
MS-Biology 7-12	-	3	-	3	-
MS-Biology 5-12	-	1	-	1	-
MS-Biology/I 5-12	1	-	-	1	-
MS-Teachng & Curriculum	3	6	3	12	-
EdD-Teachng & Curriculum	1	18	5	-	24
PhD-Teachng & Curriculum	11	11	12	-	34
MS-English 7-12	1	3	-	4	-
MAT-English 7-12	2	-	-	2	-
MS-Social Studies 7-12	4	2	-	6	-
MAT-Social Studies 7-12	1	-	-	1	-
MS-Social Studies 5-12	1	-	-	1	-
MS-Social Studies/I 5-12	1	-	-	1	-
MS-Chemistry 7-12	2	-	-	2	-
MS-Math 7-12	2	-	-	2	-
MS-Math 5-12	-	-	1	1	-
MS-Math/I 5-12	1	-	-	1	-
MS-Physics 7-12	2	-	-	2	-
MS-Physics/I 7-12	1	-	-	1	-
Teaching Social Studies	1	-	-	1	-
MS-Spanish 7-12	-	3	-	3	-
MS-Spanish 5-12	1	-	-	1	-
MS-TESOL	2	-	-	2	-
MS-Earth Science 5-12	1	-	-	1	-
SUBTOTAL	108	207	66	195	186

*X-time indicates students are not registered for course work in the semester. These students are normally enrolled in a 'place-holder' course, which makes them eligible to register for courses at Rochester in a subsequent semester.

UNIVERSITY OF ROCHESTER

Graduate Majors

By School, All Students, Fall Semester (Those with double majors and/or double degrees are counted in each major and/or degree)

	2001-02			2002-03			2002-03		2003-04			2003-04	
	Full	Part	X	Full	Part	X	Masters	Doctoral	Full	Part	X	Masters	Doctoral
Eastman School of Music													
Accompanying	13	-	-	12	-	3	4	11	14	-	1	4	11
Composition	10	3	3	16	-	1	13	4	16	-	-	8	8
Conducting	9	4	1	10	-	3	7	6	10	-	2	7	5
Jazz Studies&Contemp Media	9	-	-	9	2	-	8	3	11	1	-	9	3
Jazz Studies&Contemp Media-Performance	-	1	-	-	-	-	-	-	-	-	-	-	-
Jazz Studies&Contemp Media-Writing	4	-	-	6	-	-	6	-	5	-	-	5	-
Music Education - Graduate	15	14	4	13	11	3	16	11	17	13	2	21	11
Music Theory	28	1	15	31	-	6	4	33	30	-	6	4	32
Musicology	15	-	5	17	-	5	1	21	18	-	6	1	23
Performance & Literature	199	28	30	235	8	31	157	117	254	18	19	162	129
Theory Pedagogy	7	2	1	11	-	1	6	6	8	2	1	7	4
SUBTOTAL	309	53	59	360	21	53	222	212	383	34	37	228	226

	2001-02			2002-03			2002-03		2003-04			2003-04	
	Full	Part	X	Full	Part	X	Masters	Doctoral	Full	Part	X	Masters	Doctoral
School of Medicine & Dentistry													
<i>Notes: Figures do not include M.D. student enrollments.</i>													
<i>First-year Ph.D. student clusters are reported in the program name.</i>													
Anatomy	3	-	1	-	-	2	-	2	3	-	1	-	4
Biochem Molecular Bio & Genetics	14	-	-	13	-	-	-	13	12	-	-	-	12
Biochemistry	31	-	-	36	1	-	1	36	42	-	-	-	42
Biophysics	23	-	-	23	-	-	-	23	22	-	1	-	23
Cell Regulatns & Molecular Pharm	15	-	-	-	-	-	-	-	-	-	-	-	-
Cellular & Molecular Basis of Disease	-	-	-	15	-	-	-	15	13	-	-	-	13
Dental Science	-	-	-	1	1	-	2	-	1	-	1	2	-
Epidemiology	-	-	-	1	-	-	-	1	5	1	-	1	5
Genetics	6	-	-	16	-	1	-	17	17	-	-	-	17
Genetics Genomics & Dev	-	-	-	2	-	-	-	2	5	-	-	-	5
Health Services Research & Policy	15	3	-	12	2	2	-	16	15	2	2	-	19
Immunology Microbiol & Vacc Biol	12	-	-	13	-	-	-	13	23	-	-	-	23
Microbiology & Immunology	58	11	3	55	8	3	11	55	61	5	2	8	60
Molecular Biophy & Structural Biochem	6	-	-	5	-	-	-	5	7	-	-	-	7
Marriage & Family Therapy	2	17	-	12	13	1	26	-	15	14	1	30	-
Molec Oncolgy & Cancer Biology	6	-	-	-	-	-	-	-	-	-	-	-	-
Molec Toxicolgy & Envir Medicine	5	-	-	-	-	-	-	-	-	-	-	-	-
Neurobiology	8	-	-	-	-	-	-	-	-	-	-	-	-
Neuroscience	25	-	-	36	-	2	-	38	39	-	-	-	39
Pathology	39	-	-	39	-	-	-	39	36	1	-	1	36
Pathways of Human Disease	-	-	-	-	-	-	-	-	8	-	-	-	8
Pharmacology	24	1	-	26	2	1	2	27	26	2	1	2	27
Public Health	9	17	6	10	24	9	43	-	6	21	15	42	-
Public Health Clinical Investigation	12	41	2	7	40	8	53	2	7	32	16	53	2
Statistics	10	-	-	2	-	-	-	2	9	-	-	-	9
Toxicology	22	-	-	35	-	2	-	37	37	-	1	-	38
SUBTOTAL	345	90	12	359	91	31	138	343	409	78	41	139	389

*X-time indicates students are not registered for course work in the semester. These students are normally enrolled in a 'place-holder' course, which makes them eligible to register for courses at Rochester in a subsequent semester.

UNIVERSITY OF ROCHESTER

Graduate Majors

By School, All Students, Fall Semester (Those with double majors and/or double degrees are counted in each major and/or degree)

	2001-02			2002-03			2002-03		2003-04			2003-04	
	Full	Part	X	Full	Part	X	Masters	Doctoral	Full	Part	X	Masters	Doctoral
School of Nursing													
Acute Critical Care	-	-	-	2	6	1	9	-	1	5	1	7	-
Acute Care Cardiovascular	-	8	-	-	8	2	10	-	-	5	1	6	-
Acute Care Oncology	-	-	-	-	-	-	-	-	-	-	-	-	-
Acute Care Cardiopulmonary	1	5	3	-	-	-	-	-	-	-	-	-	-
Adult Nurse Practitioner	2	18	3	-	25	7	32	-	2	20	3	25	-
Care of Children & Families	8	11	2	5	15	4	24	-	4	17	2	23	-
Family Health Nurse Practitioner	7	24	1	7	25	4	36	-	9	20	4	33	-
Gerontological Nurse Practitioner	-	1	1	-	-	-	-	-	1	1	-	1	1
Neonatal Nurse Practitioner	2	3	-	2	3	-	5	-	1	1	-	2	-
Nurse Midwifery	-	-	-	-	-	-	-	-	-	-	-	-	-
Nursing	15	14	12	23	7	8	1	37	18	6	11	1	34
Pediatric Nurses Prac/Psych Mental Health	-	-	-	3	-	-	3	-	2	-	2	4	-
Psych Mental Health	8	18	2	7	15	1	22	1	3	11	2	16	-
Women's Health Care	-	-	-	-	-	-	-	-	-	-	-	-	-
SUBTOTAL	43	102	24	49	104	27	142	38	41	86	26	118	35

	2001-02			2002-03			2002-03		2003-04			2003-04	
	Full	Part	X	Full	Part	X	Masters	Doctoral	Full	Part	X	Masters	Doctoral
UNIVERSITY TOTALS	2,279	716	221	2,388	652	243	1,568	1,715	2,518	618	214	1,548	1,802

*X-time indicates students are not registered for course work in the semester. These students are normally enrolled in a 'place-holder' course, which makes them eligible to register for courses at Rochester in a subsequent semester.
Source: Student Information System

UNIVERSITY OF ROCHESTER

Course Credit Hours & Enrollments by School and Subject Area

Reported for Undergraduate & Graduate Students

Simon Graduate School of Business Administration	NUMBER OF CREDIT HOURS						NO. OF COURSE ENROLLMENTS					
	Fall 2001		Fall 2002		Fall 2003		Fall 2001		Fall 2002		Fall 2003	
	UG	Grad	UG	Grad	UG	Grad	UG	Grad	UG	Grad	UG	Grad
Accounting	512	1,528	576	1,311	344	1,383	130	676	146	575	90	596
Applied Economics	-	181	-	168	-	151	-	57	-	56	-	49
Applied Statistics	10	994	8	888	20	875	5	497	4	443	10	425
Business Env & Public Policy	-	63	-	102	-	84	-	21	-	34	-	28
Business Law	196	3	188	-	196	-	49	1	47	-	49	-
Competitive & Organizational Strategy	12	1,300	8	1,355	20	1,103	6	594	4	587	10	477
Computer & Information Sys	68	449	40	355	40	390	17	183	10	151	10	180
Exec. Program - Bern, Switzerland	-	432	-	450	-	495	-	144	-	150	-	165
Exec. Program - Nijenrode, Netherlands	-	524	-	570	-	264	-	143	-	152	-	88
Executive Development	-	1,257	-	839	-	542	-	353	-	242	-	144
Finance	176	1,563	174	1,497	220	1,359	45	521	44	499	56	453
General Business Admin	52	149	67	224	52	372	13	68	17	87	13	116
Health Sciences	-	-	-	63	-	87	-	-	-	21	-	29
Management Communications	-	191	2	173	-	-	-	187	2	173	-	-
Management Science Models	-	21	-	42	-	48	-	7	-	14	-	16
Marketing	160	552	148	540	196	465	40	184	37	180	49	155
Operations Management	72	237	32	300	24	216	18	79	8	100	6	72
TOTAL	1,258	9,444	1,243	8,877	1,112	7,834	323	3,715	319	3,464	293	2,993

Eastman School of Music	NUMBER OF CREDIT HOURS						NO. OF COURSE ENROLLMENTS					
	Fall 2001		Fall 2002		Fall 2003		Fall 2001		Fall 2002		Fall 2003	
	UG	Grad	UG	Grad	UG	Grad	UG	Grad	UG	Grad	UG	Grad
Accompanying	76	72	47	64	43	76	57	21	40	23	34	22
Arts Leadership Curriculum	115	85	78	140	118	173	100	77	65	107	71	114
Composition	135	46	198	80	130	83	72	21	100	40	68	35
Conducting	98	66	118	58	112	49	49	28	59	26	56	22
Eastman Initiatives Curriculum	233	-	258	-	146	-	116	-	129	-	142	-
Eastman School of Music	-	55	-	122	-	83	-	88	-	102	-	100
Ensemble	911	90	903	102	857	109	530	71	545	87	530	87
Humanities	1,316	40	1,406	57	1,402	56	454	28	489	40	490	28
Jazz Studies & Contemp Media	288	103	318	105	287	97	185	75	205	64	195	61
Music Education	273	108	314	84	416	95	187	44	198	32	254	39
Music History	503	536	401	538	121	573	179	208	134	215	41	228
Musicology	4	142	-	110	3	123	1	38	-	28	1	33
Opera	75	68	71	46	87	62	31	34	30	26	35	36
Orchestration	-	6	-	12	-	14	-	3	-	6	-	7
Pedagogy	31	17	49	30	29	15	23	6	32	16	25	8
Performance	-	-	-	-	-	1	-	-	-	-	-	1
Sacred Music	2	6	2	4	-	9	1	3	2	4	-	5
Theory	1,457	483	1,446	535	1,474	515	456	185	438	203	718	196
SUBTOTAL	5,519	1,920	5,608	2,086	5,225	2,131	2,444	930	2,466	1,019	2,660	1,022
Applied Music	3,131	1,197	3,166	1,305	3,224	1,462	1,160	315	1,186	339	1,203	400
SUBTOTAL	8,647	3,117	8,774	3,391	8,449	3,593	3,601	1,245	3,652	1,358	3,863	1,422
Study Abroad	16	24	16	-	32	12	1	2	1	-	2	1
TOTAL	8,663	3,141	8,790	3,391	8,481	3,605	3,602	1,247	3,653	1,358	3,865	1,423

UNIVERSITY OF ROCHESTER

Course Credit Hours & Enrollments by School and Subject Area

Reported for Undergraduate & Graduate Students

School of Medicine & Dentistry Does not include M.D. students	NUMBER OF CREDIT HOURS						NO. OF COURSE ENROLLMENTS					
	Fall 2001		Fall 2002		Fall 2003		Fall 2001		Fall 2002		Fall 2003	
	UG	Grad	UG	Grad	UG	Grad	UG	Grad	UG	Grad	UG	Grad
Anatomy	-	48	-	-	-	41	-	6	-	-	-	4
Biochemistry	524	571	364	616	431	763	131	97	91	104	108	130
Biophysics	-	414	-	399	-	389	-	62	-	52	-	62
Biostatistics	14	420	28	380	28	444	7	107	12	109	11	118
Environmental Studies	-	-	-	-	-	-	-	-	-	-	-	-
General Dentistry	-	324	-	228	-	240	-	27	-	19	-	20
Genetics	-	93	-	272	-	289	-	14	-	50	-	49
Interdepartmental	119	630	96	691	99	707	30	144	21	154	23	161
Microbiology	425	1,088	381	1,050	204	1,266	108	273	96	286	54	346
Neuroscience	9	512	-	515	-	547	3	61	-	74	-	80
Oral Biology	-	60	-	28	-	26	-	54	-	19	-	21
Orthodontics	-	-	-	24	-	24	-	-	-	2	-	2
Pathology	4	692	-	604	-	666	1	96	-	116	-	127
Periodontics	-	-	-	12	-	24	-	-	-	1	-	2
Pharmacology & Physiology	8	528	-	591	4	534	2	98	-	107	1	83
Preventive Medicine	80	752	23	718	34	681	20	221	7	245	9	221
Prosthodontics	-	-	-	24	-	24	-	-	-	2	-	2
Psychiatry	-	161	-	243	-	181	-	54	-	84	-	62
Temporomandibular Joint Disorder	-	-	-	48	-	60	-	-	-	4	-	5
Toxicology	-	349	-	399	-	480	-	48	-	59	-	60
TOTAL	1,183	6,642	892	6,842	800	7,386	302	1,362	227	1,487	206	1,555

Warner Graduate School of Education and Human Development	NUMBER OF CREDIT HOURS						NO. OF COURSE ENROLLMENTS					
	Fall 2001		Fall 2002		Fall 2003		Fall 2001		Fall 2002		Fall 2003	
	UG	Grad	UG	Grad	UG	Grad	UG	Grad	UG	Grad	UG	Grad
Education	50	855	59	869	22	903	13	342	17	354	6	392
Field Experiences	-	-	-	60	-	79	-	-	-	26	-	38
Higher Education	59	1,013	55	1,037	28	1,072	16	355	16	351	8	358
TOTAL	109	1,868	114	1,966	50	2,054	29	697	33	731	14	788

School of Nursing	NUMBER OF CREDIT HOURS						NO. OF COURSE ENROLLMENTS					
	Fall 2001		Fall 2002		Fall 2003		Fall 2001		Fall 2002		Fall 2003	
	UG	Grad	UG	Grad	UG	Grad	UG	Grad	UG	Grad	UG	Grad
Nursing	1,116	1,024	872	1,048	1,210	925	261	291	231	277	314	248
Nursing/Community Center	-	-	13	49	122	140	-	-	13	33	42	62
TOTAL	1,116	1,024	885	1,097	1,332	1,065	261	291	244	310	356	310

University Totals	NUMBER OF CREDIT HOURS						NO. OF COURSE ENROLLMENTS					
	Fall 2001		Fall 2002		Fall 2003		Fall 2001		Fall 2002		Fall 2003	
	UG	Grad	UG	Grad	UG	Grad	UG	Grad	UG	Grad	UG	Grad
Fall each academic year	77,136	29,604	77,196	29,776	75,982	30,053	21,316	9,425	21,373	9,418	21,369	9,297

Notes:
 Students registered for leave of absence, including senior year in absentia, have been excluded.
 Eastman Dental Center credit hours are included in SMD.
 Cross-listed registrations are reported in the parent course.

Source: Student Information System

UNIVERSITY OF ROCHESTER

**Distribution of Undergraduate Courses by Section Size
Fall 2003**

Arts & Sciences	# Sect.	Avg. Size								
			1-9	10-19	20-29	30-39	40-49	50-99	100-199	200+
African-American Studies	1	4	1	-	-	-	-	-	-	-
American Sign Language	17	13	3	14	-	-	-	-	-	-
American Sign Language	16	14	2	14	-	-	-	-	-	-
Japanese Sign Language	1	8	1	-	-	-	-	-	-	-
Anthropology	12	23	2	4	2	3	1	-	-	-
Art & Art History	21	14	4	14	1	2	-	-	-	-
Art & Art History - Art History	10	16	3	4	1	2	-	-	-	-
Art & Art History - Studio Arts	11	13	1	10	-	-	-	-	-	-
Biology	13	95	-	1	2	1	-	5	3	1
Brain & Cognitive Science	16	44	2	6	1	-	2	4	-	1
Brain & Cognitive Science	10	57	2	1	1	-	2	3	-	1
Neuroscience	6	23	-	5	-	-	-	1	-	-
Chemistry	9	123	-	-	3	1	1	-	1	3
Clinical & Social Psychology	26	46	5	8	3	3	-	2	5	-
Clinical & Soc Sciences in Psy	24	40	5	8	3	3	-	1	4	-
Psychology	2	126	-	-	-	-	-	1	1	-
Computer Science	15	37	3	3	2	2	-	4	1	-
Dance	15	11	5	8	2	-	-	-	-	-
Earth & Environmental Sciences	9	15	4	4	-	-	-	1	-	-
Economics	19	55	1	3	1	4	2	6	1	1
English	45	20	11	14	11	6	2	1	-	-
Film & Media Studies	1	14	-	1	-	-	-	-	-	-
Health & Society	1	26	-	-	1	-	-	-	-	-
History	29	22	11	7	2	3	3	3	-	-
Linguistics	6	32	1	-	2	1	1	1	-	-
Mathematics	36	38	3	4	8	6	5	10	-	-
Modern Languages & Cultures	66	17	18	25	17	2	2	2	-	-
Chinese	3	15	1	2	-	-	-	-	-	-
Comparative Literature	1	50	-	-	-	-	-	1	-	-
French	10	17	1	6	3	-	-	-	-	-
German	8	25	1	3	3	-	-	1	-	-
Italian	8	16	5	1	-	1	1	-	-	-
Japanese	8	14	4	2	1	-	1	-	-	-
Polish	1	3	1	-	-	-	-	-	-	-
Russian	9	14	4	2	2	1	-	-	-	-
Spanish	18	18	1	9	8	-	-	-	-	-
Music	33	16	13	9	7	2	1	1	-	-
Naval Science	2	18	-	2	-	-	-	-	-	-
Philosophy	13	40	1	3	1	2	1	5	-	-
Physics & Astronomy	17	39	5	3	2	2	1	2	2	-
Astronomy	3	33	1	1	-	-	-	1	-	-
Physics	14	40	4	2	2	2	1	1	2	-
Political Science	20	41	3	2	8	-	-	6	1	-
Religion & Classics	31	19	12	8	3	3	3	2	-	-
Classical Greek	2	6	2	-	-	-	-	-	-	-
Classical Studies	2	20	1	-	-	1	-	-	-	-
Judaic Studies	1	1	1	-	-	-	-	-	-	-
Religion & Classics - Arabic	4	20	-	2	1	1	-	-	-	-
Religion & Classics - Hebrew	2	11	-	2	-	-	-	-	-	-
Religion & Classics - Latin	5	8	4	-	1	-	-	-	-	-
Religion & Classics - Yiddish	-	-	-	-	-	-	-	-	-	-
Religion & Classics - Sanskrit	2	8	1	1	-	-	-	-	-	-
Religion & Classics	13	29	3	3	1	1	3	2	-	-
Russian Studies	1	44	-	-	-	-	1	-	-	-
Sociology	2	40	-	1	-	-	-	1	-	-
Statistics	5	44	-	1	1	-	1	2	-	-
The College: Arts & Sciences	50	12	12	37	-	1	-	-	-	-
Women's Studies	2	11	1	1	-	-	-	-	-	-
TOTAL	533	29	121	183	80	44	27	58	14	6

UNIVERSITY OF ROCHESTER

**Distribution of Undergraduate Courses by Section Size
Fall 2003**

School of Engineering and Applied Sciences	#	Avg.			20-	30-	40-	50-	100-	
	Sect.	Size	1-9	10-19	29	39	49	99	199	200+
Biomedical Engineering	7	39	-	1	-	2	3	1	-	-
Chemical Engineering	9	19	1	4	3	1	-	-	-	-
Electrical & Computer Engineering	11	26	1	3	2	2	3	-	-	-
Mechanical Engineering	12	29	2	1	3	4	1	1	-	-
Optics	8	24	-	2	5	1	-	-	-	-
TOTAL	47	27	4	11	13	10	7	2	-	-

Simon Graduate School of Business Administration	#	Avg.			20-	30-	40-	50-	100-	
	Sect.	Size	1-9	10-19	29	39	49	99	199	200+
Accounting	2	42	-	-	-	1	1	-	-	-
Business Law	2	25	-	-	2	-	-	-	-	-
Computers & Information Sys	1	10	-	1	-	-	-	-	-	-
Finance	1	47	-	-	-	-	1	-	-	-
General Business Admin	1	12	-	1	-	-	-	-	-	-
Marketing	2	25	-	1	-	1	-	-	-	-
Operations Management	1	6	1	-	-	-	-	-	-	-
TOTAL	10	26	1	3	2	2	2	-	-	-

UNIVERSITY OF ROCHESTER

Distribution of Undergraduate Courses by Section Size
Fall 2003

Eastman School of Music	#	Avg.								
	Sect.	Size	1-9	10-19	20-29	30-39	40-49	50-99	100-199	200+
Accompanying	4	12	2	1	1	-	-	-	-	-
Arts Leadership Curriculum	13	14	4	6	3	-	-	-	-	-
Composition	12	5	11	-	1	-	-	-	-	-
Conducting	5	14	3	1	-	-	1	-	-	-
Eastman Initiatives Curriculum	2	71	1	-	-	-	-	-	1	-
Eastman School of Music	1	16	-	1	-	-	-	-	-	-
Ensembles	20	28	7	6	2	1	-	2	2	-
Humanities	37	14	13	13	9	2	-	-	-	-
Anthropology and Religion	2	10	1	1	-	-	-	-	-	-
Art History	2	13	1	-	1	-	-	-	-	-
English	6	13	3	2	1	-	-	-	-	-
French	5	10	2	2	1	-	-	-	-	-
German	6	13	3	1	2	-	-	-	-	-
History	1	9	1	-	-	-	-	-	-	-
Humanities	8	18	-	5	3	-	-	-	-	-
Italian	5	14	2	2	-	1	-	-	-	-
Philosophy	1	20	-	-	1	-	-	-	-	-
Psychology	1	31	-	-	-	1	-	-	-	-
Jazz Studies & Contemp Media	21	10	13	7	1	-	-	-	-	-
Music Education	43	6	30	13	-	-	-	-	-	-
Music History	5	12	2	2	1	-	-	-	-	-
Opera	4	12	2	1	1	-	-	-	-	-
Pedagogy	3	9	2	1	-	-	-	-	-	-
Theory	36	21	6	15	8	-	4	3	-	-
SUBTOTAL	206	14	96	67	27	3	5	5	3	-
Applied Music	187	6	147	35	2	1	2			
Bassoon	2	8	1	1	-	-	-	-	-	-
Chamber Music	14	17	6	4	1	1	2	-	-	-
Clarinet	5	6	4	1	-	-	-	-	-	-
Double Bass	3	7	2	1	-	-	-	-	-	-
Euphonium	2	3	2	-	-	-	-	-	-	-
Flute	6	6	5	1	-	-	-	-	-	-
Guitar	4	5	4	-	-	-	-	-	-	-
Harp	2	7	1	1	-	-	-	-	-	-
Harpsichord	1	5	1	-	-	-	-	-	-	-
Horn	3	8	2	-	1	-	-	-	-	-
Jazz Lessons	12	3	11	1	-	-	-	-	-	-
Keyboard	6	7	6	-	-	-	-	-	-	-
Oboe	3	8	2	1	-	-	-	-	-	-
Organ	4	4	4	-	-	-	-	-	-	-
Percussion	4	7	2	2	-	-	-	-	-	-
Piano	19	7	13	6	-	-	-	-	-	-
Piano Class	39	5	34	5	-	-	-	-	-	-
Piccolo	1	6	1	-	-	-	-	-	-	-
Saxophone	3	5	3	-	-	-	-	-	-	-
Strings	1	3	1	-	-	-	-	-	-	-
Trombone	5	5	4	1	-	-	-	-	-	-
Trumpet	4	6	3	1	-	-	-	-	-	-
Tuba	1	6	1	-	-	-	-	-	-	-
Viola	5	4	5	-	-	-	-	-	-	-
Violin	12	6	9	3	-	-	-	-	-	-
Violoncello	5	6	5	-	-	-	-	-	-	-
Voice	21	8	15	6	-	-	-	-	-	-
TOTAL	393	11	243	102	29	4	7	5	3	-

UNIVERSITY OF ROCHESTER

**Distribution of Undergraduate Courses by Section Size
Fall 2003**

School of Medicine and Dentistry	#	Avg.								
	Sect.	Size	1-9	10-19	20-29	30-39	40-49	50-99	100-199	200+
Biochemistry	1	114	-	-	-	-	-	-	1	-
Microbiology	2	16	-	1	1	-	-	-	-	-
TOTAL	3	49	-	1	1	-	-	-	1	-

School of Nursing	#	Avg.								
	Sect.	Size	1-9	10-19	20-29	30-39	40-49	50-99	100-199	200+
Nursing	15	17	5	1	8	-	1	-	-	-
Nursing/Community Center	2	14	1	1	-	-	-	-	-	-
TOTAL	17	17	6	2	8	-	1	-	-	-

Notes: Registrar's Student Section Extract includes all registrants who have not withdrawn as of the fourth week of classes; includes auditors; excludes labs and independent study.

All cross listed registrations are listed in parent course.

Source: Student Information Files (ISIS)

UNIVERSITY OF ROCHESTER
Full-time Tenure-track Faculty*

	1994-95	1995-96	1996-97	1997-98	1998-99	1999-00	2000-01	2001-02	2002-03	2003-04
SCHOOL										
Arts & Sciences	291	284	279	260	261	258	259	258	258	260
Engineering & Applied Sciences	58	56	55	53	51	50	49	53	57	57
The College Subtotal	349	340	334	313	312	308	308	311	315	317
Simon Graduate School of Business	37	37	39	41	40	46	48	46	47	44
Warner Graduate School of Education & Human Development	20	20	20	21	18	17	20	21	21	25
Eastman School of Music	80	83	80	86	81	82	80	82	86	86
School of Medicine & Dentistry	541	540	537	529	532	547	536	542	603	650
School of Nursing	19	18	19	17	17	14	15	16	18	18
University Total	1,046	1,038	1,029	1,007	1,000	1,014	1,007	1,018	1,090	1,140

*Full-time tenure-track faculty as reported annually by the University Budget Office. Includes faculty who are tenured, and those in a track towards tenure. School of Medicine and Dentistry counts are submitted by that school's dean's office.

UNIVERSITY OF ROCHESTER
Full-time Tenure-track Faculty

2001-02 2002-03 2003-04

SCHOOL AND DEPARTMENT

THE COLLEGE

Arts & Sciences

Anthropology	6	5	6
Art & Art History	11	8	10
Biology	17	16	16
Brain and Cognitive Science	17	17	17
Chemistry	19	20	20
Clinical and Social Psychology	13	14	14
Computer Science	13	14	15
Earth and Environmental Sciences	7	7	7
Economics	18	18	15
English	20	20	19
History	16	17	17
Linguistics	3	3	3
Mathematics	18	16	17
Modern Languages & Cultures	15	15	16
Music	5	4	4
Philosophy	8	8	8
Physics and Astronomy	26	27	28
Political Science	15	18	17
Religion & Classics	9	9	9
Sociology	2	2	2
SUBTOTAL	258	258	260

**School of Engineering
and Applied Sciences**

Biomedical Engineering	4	5	4
Chemical Engineering	6	6	6
Electrical & Computer Engineering	15	16	18
Mechanical Engineering	13	14	13
Optics	15	16	16
SUBTOTAL	53	57	57

THE COLLEGE SUBTOTAL 311 315 317

Simon Graduate School of Business Administration	46	47	44
---	-----------	-----------	-----------

Warner Graduate School of Education and Human Development	21	21	25
--	-----------	-----------	-----------

Eastman School of Music

Composition	4	4	5
Conducting/Ensemble	3	4	4
Humanities	6	6	6
Jazz and Contemporary Media	4	4	4
Music Education	6	6	6
Musicology	8	8	7
Opera	1	1	1
Organ	2	2	2
Piano	8	8	8
Strings	13	14	14
Theory	9	10	11
Voice	7	8	7
Woodwind, Brass, Percussion	11	11	11
ESM SUBTOTAL	82	86	86

UNIVERSITY OF ROCHESTER
Full-time Tenure-track Faculty

2001-02

2002-03

2003-04

SCHOOL AND DEPARTMENT

**School of Medicine
and Dentistry***

	Tenured Prof & Assoc Prof	On-track All Eligible Ranks	Tenured Prof & Assoc Prof	On-track All Eligible Ranks	Tenured Prof & Assoc Prof	On-track All Eligible Ranks
Anesthesiology	4	15	3	14	3	20
Biochemistry and Biophysics	21	3	20	4	20	5
Biomedical Engineering	1	1	1	1	2	1
Biomedical Genetics	3	4	3	4	3	6
Biostat & Comp Biology	3	4	3	4	3	7
Ctr Aging/Dev Biology	5	6	5	6	4	5
Ctr Cardiovascular Research	0	4	0	6	0	6
Ctr Oral Biology	4	2	3	2	3	2
Ctr Vaccine Biology/Immunology	1	4	4	4	4	4
Community & Preventive Medicine	4	9	5	9	4	9
Dentistry	1	6	1	10	1	16
Dermatology	3	4	2	6	2	5
Emergency Medicine	0	12	0	15	0	18
Environmental Medicine	7	7	7	8	5	8
Family Medicine	0	5	0	9	0	8
Laboratory Animal Medicine	0	2	0	3	0	3
Medicine	23	69	24	78	24	89
Microbiology & Immunology	13	5	13	5	13	6
Neurobiology & Anatomy	9	6	10	6	10	6
Neurology	10	19	10	25	12	28
Neurosurgery	1	3	1	2	2	3
Obstetrics & Gynecology	4	14	4	13	4	14
Ophthalmology	2	5	2	6	2	9
Orthopaedics	5	11	4	15	4	18
Pathology & Lab Medicine	10	13	10	19	9	16
Pediatrics	14	23	14	35	13	42
Pharmacology and Physiology	9	5	9	5	11	4
Physical Medicine/Rehabilitation	0	5	0	3	0	3
Psychiatry	7	34	7	45	7	46
Radiation Oncology	5	7	4	6	4	4
Radiology	4	18	5	18	5	23
Surgery	7	30	8	27	8	25
Urology	3	4	3	5	3	6
Subtotal	183	359	185	418	185	465

Medicine & Dentistry Subtotal

542	603	650
-----	-----	-----

*Faculty excluded from this report: Professors and Associate Professors in Option A, C-T, or T-C-S, Geographic full-time Faculty and Professional Service Faculty, Service Track Faculty, Research Track Faculty

School of Nursing**

16	18	18
----	----	----

** Clinical faculty (non-tenure track) are not reported on this table.

	2001-02	2002-03	2003-04
TOTAL UNIVERSITY	1,018	1,090	1,140

Source: University Budget Office; School of Medicine and Dentistry Dean's Office

UNIVERSITY OF ROCHESTER
Faculty and Staff in University Divisions*
as of September 30, 2003

UNIVERSITY DIVISIONS	Full- and Part-time Active Employees		
	FT	PT	TOTAL
Central Administration	1,247	128	1,375
The College, Arts and Sciences	802	90	892
School of Engineering/Laser Lab	368	18	386
Simon Grad School of Business	131	8	139
Warner Grad School of Education	50	12	62
Eastman School of Music	208	33	241
School of Medicine & Dentistry	2,993	375	3,368
School of Nursing	78	39	117
Memorial Art Gallery	47	12	59
Strong Memorial Hospital	4,862	1,148	6,010
Vice Provost for Health Affairs	591	91	682
SUBTOTAL	11,377	1,954	13,331

STRONG HEALTH DIVISIONS	Full- and Part-time Active Employees		
	FT	PT	TOTAL
Highland Hospital	1,273	408	1,681
Highlands at Brighton	172	29	201
Visiting Nurse Service	484	305	789
SUBTOTAL	1,929	742	2,671

TOTAL	13,306	2,696	16,002
--------------	---------------	--------------	---------------

*Time-as-reported and Casual employees are excluded.

Source: Human Resources