

University of Rochester

2006-07 Fact Book



Office of the Provost
Institutional Research
203 Wallis Hall
Rochester, NY 14627-0021
585-275-8063

© 2006 University of Rochester

University of Rochester

Fact Book 2006-07

<http://www.rochester.edu/provost/ir/07FACTBOOK.pdf>

Table of Contents

<u>Subject</u>	<u>Time Covered</u>	<u>Page</u>
Table of Contents	--	2
Accreditation	--	3
Organization	1 Year	4
Space	10 Years	5
Degrees Conferred	10 Years	6
Degrees by Major	3 Years	7
Certificates	3 Years	12
Admissions	10 Years	13
Enrollment by School	10 Years	14
Enrollment by School and Full-time/Part-time Status	3 Years	15
Enrollment, Gender and Ethnicity	1 Year	18
Enrollment, Geographic Origins	1 Year	19
Enrollment, Majors	3 Years	20
Courses, Credit Hours	3 Years	25
Courses, Section Size	1 Year	28
Faculty by School	10 Years	32
Faculty by Department	3 Years	33
Staff	1 Year	35

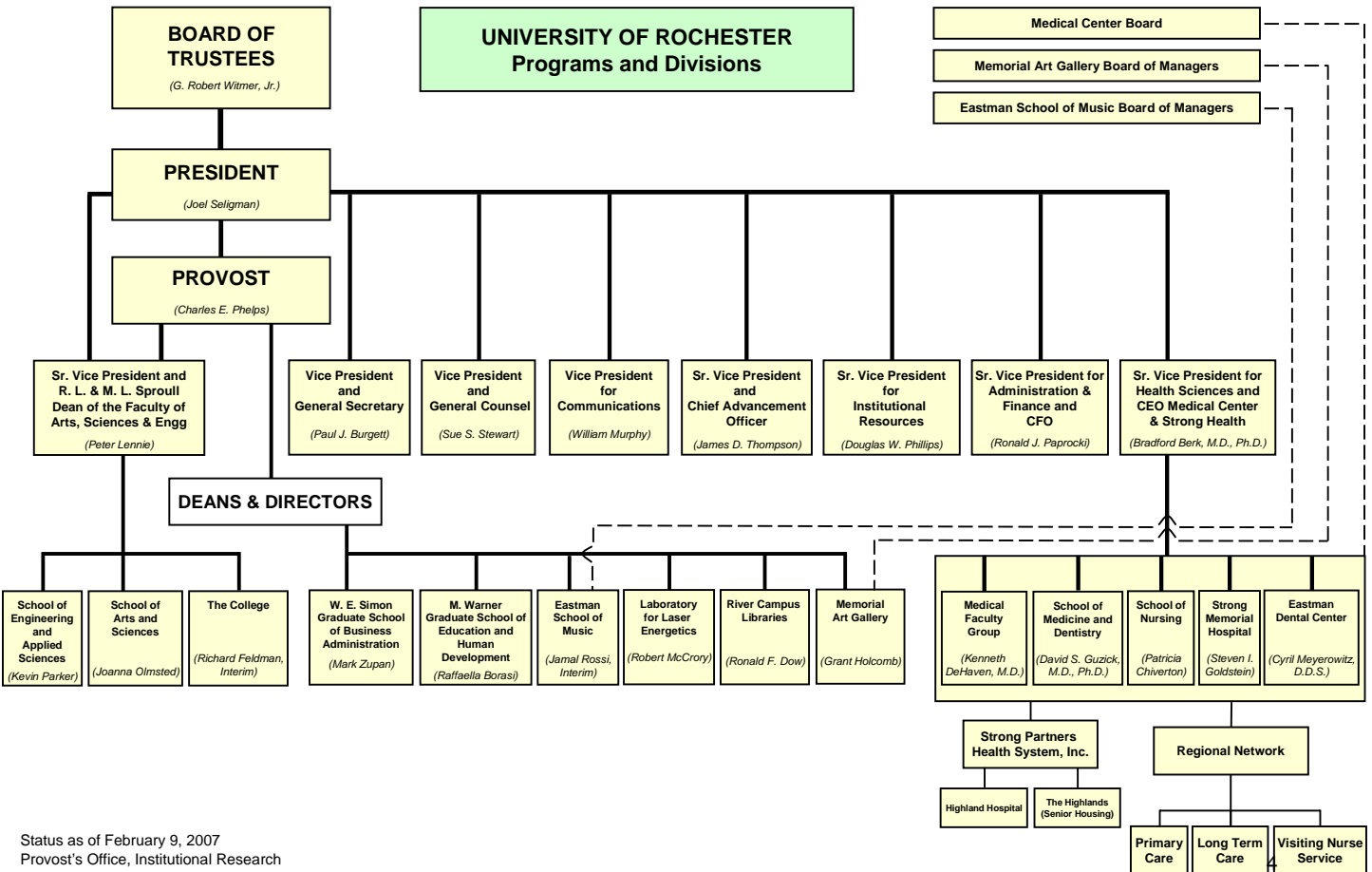
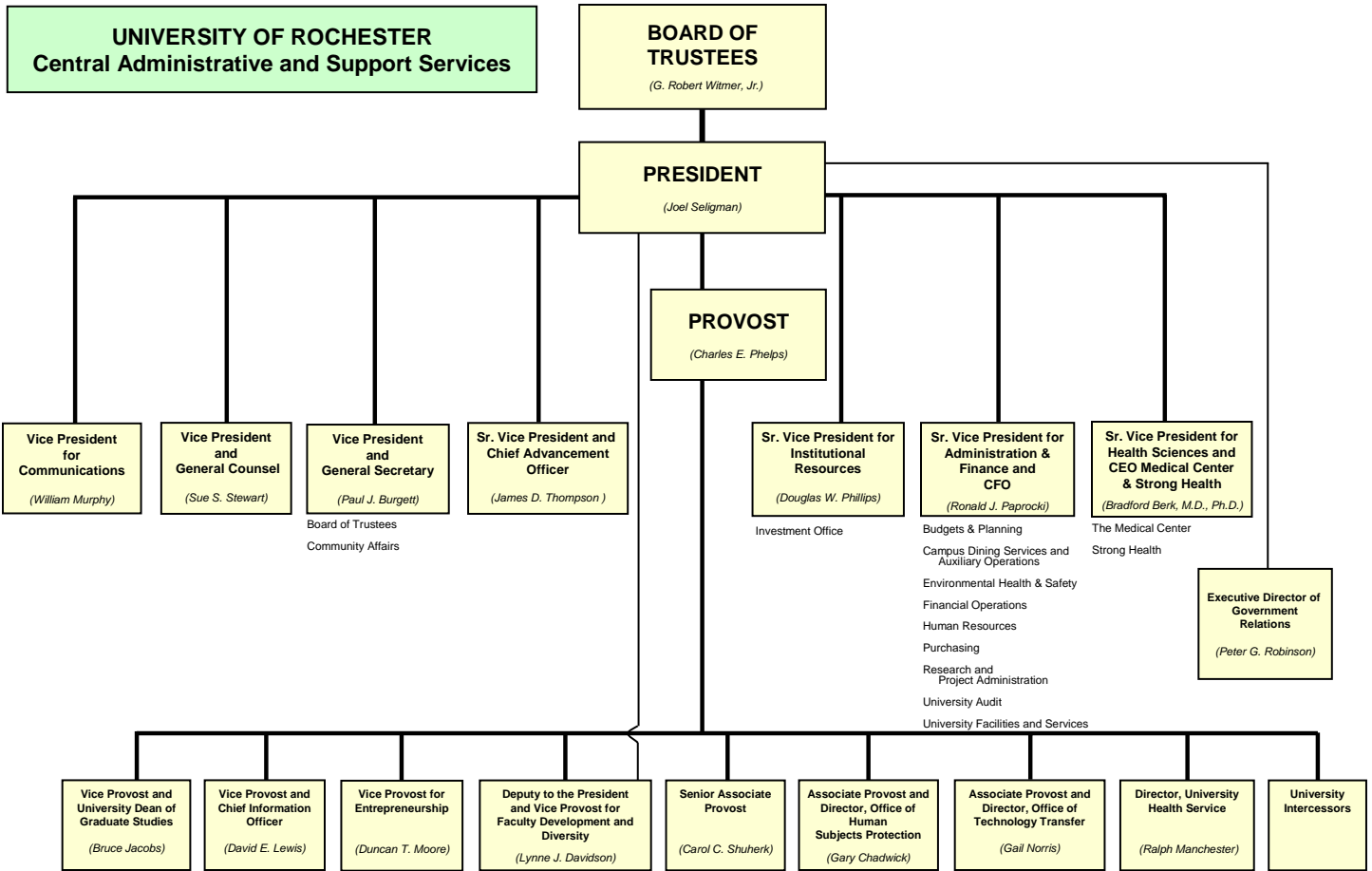
UNIVERSITY OF ROCHESTER

ACCREDITATION

The University of Rochester is accredited by the **Middle States Commission on Higher Education**, <http://www.msche.org>, and the **New York State Board of Regents**, <http://www.regents.nysed.gov/>.

Programs within the University's Schools are accredited by the following agencies:

- Accreditation Board of Engineering and Technology, Inc.
- Accreditation Council on Graduate Medical Education
- American Academy of Microbiology
- American Association for Marriage and Family Therapy
- American Dental Association
- American Psychological Association
- Association for Clinical and Pastoral Education
- Association to Advance Collegiate Schools of Business, International
- Council for Accreditation of Counseling and Related Educational Programs
- Council on Education for Public Health
- Liaison Committee on Medical Education
- National Association of Schools of Music
- National Council for Accreditation of Teacher Education
- National League for Nursing Accrediting Commission



UNIVERSITY OF ROCHESTER
Size of Campus

	1997-98	1998-99	1999-2000	2000-01	2001-02	2002-03	2003-04	2004-05	2005-06	2006-07
Campus	Buildings	Buildings	Buildings	Buildings	Buildings	Buildings	Buildings	Buildings	Buildings	Buildings
River Campus	54	54	54	55	55	55	55	55	53	54
Medical Center	11	12	15	15	18	18	18	18	18	18
South Campus	55	55	55	55	55	59	59	59	59	59
Eastman School	6	6	6	6	5	6	6	6	7	7
Memorial Art Gallery	2	2	2	2	4	4	4	4	4	4
Mt. Hope Campus	10	10	10	10	10	8	8	8	10	10
Off Campus	5	5	5	5	6	2	2	2	3	3
URMC Off Campus	-	-	-	-	-	-	-	-	1	1
UNIVERSITY TOTAL	143	144	147	148	153	152	152	152	155	156

	1997-98	1998-99	1999-2000	2000-01	2001-02	2002-03	2003-04	2004-05	2005-06	2006-07
Campus	Gross Sq. Ft.	Gross Sq. Ft.	Gross Sq. Ft.	Gross Sq. Ft.	Gross Sq. Ft.	Gross Sq. Ft.	Gross Sq. Ft.	Gross Sq. Ft.	Gross Sq. Ft.	Gross Sq. Ft.
River Campus	2,736,853	2,732,791	2,797,970	3,476,917	3,559,028	3,545,144	3,551,925	3,528,716	3,479,076	3,493,311
Medical Center	3,622,862	3,671,545	3,927,449	4,713,086	4,976,951	4,838,345	4,852,337	4,855,381	4,913,292	5,078,968
South Campus	919,177	919,177	913,289	1,067,530	1,094,888	1,111,007	1,110,593	1,110,593	1,188,895	1,195,279
Eastman School	347,784	347,784	347,784	416,646	407,283	534,494	536,064	563,138	537,734	631,384
Memorial Art Gallery	95,227	95,227	95,227	114,083	132,878	132,878	132,878	132,878	132,879	134,056
Mt. Hope Campus	189,910	189,910	170,124	194,971	202,918	198,379	198,363	198,363	218,964	218,962
Off Campus	20,907	20,907	20,754	22,279	25,623	4,087	4,087	4,087	14,242	14,242
URMC Off Campus	-	-	-	-	-	-	-	-	86,663	86,664
UNIVERSITY TOTAL	7,932,720	7,977,341	8,272,597	10,005,512	10,399,569	10,364,334	10,386,247	10,393,156	10,571,745	10,852,866

Campus Inclusions (2006-07 definitions):

River Campus is the primary campus for The College, Simon School (Graduate Business) and Warner School (Graduate Education).

Medical Center includes main school, research, hospital buildings, Annex, Ambulatory Care Facility, Parking Garage, Goler House, Central Utilities, Eastman Dental Center, Kindercare Daycare.

South Campus includes Nuclear Structure Research Laboratory, Laboratory for Laser Energetics, Center for Optoelectronics and Imaging, River Road Buildings, Graduate Living Center, University Park, Whipple Park, Intercampus Drive.

Mt. Hope addresses: 575, 590, 630, 668, 685, 692, 1351, 1510; Towne House East & West.

Off Campus includes Mees Observatory, Gannett House, 110 Tobey Village; Medical Center Off Campus is Cardiovascular Research Institute

Source: University Facilities, October 2006

UNIVERSITY OF ROCHESTER

Degrees Conferred

Bachelors

	1996-97	1997-98	1998-99	1999-00	2000-01	2001-02	2002-03	2003-04	2004-05	2005-06
Arts & Sciences	840	903	852	842	750	778	893	838	845	814
Engineering & Applied Sciences	137	95	104	106	95	135	153	144	126	117
The College Subtotal	977	998	956	948	845	913	1,046	982	971	931
University College*	-	1	-	-	1	-	-	-	-	-
Eastman School of Music	102	99	119	101	90	121	118	108	87	129
School of Nursing	85	101	64	65	57	60	53	84	76	86
University Total	1,164	1,199	1,139	1,114	993	1,094	1,217	1,174	1,134	1,146

Masters

	1996-97	1997-98	1998-99	1999-00	2000-01	2001-02	2002-03	2003-04	2004-05	2005-06
Arts & Sciences	177	155	128	147	126	99	103	125	134	117
Engineering & Applied Sciences	79	58	53	59	57	67	54	93	68	67
The College Subtotal	256	213	181	206	183	166	157	218	202	184
Simon Graduate School of Business	408	427	470	489	434	421	450	406	325	321
Warner Graduate School of Education & Human Development	84	96	63	55	53	61	71	64	97	86
Eastman School of Music	80	97	96	83	87	92	102	102	83	105
School of Medicine & Dentistry	66	82	79	74	84	61	97	92	108	124
School of Nursing	66	67	52	41	49	30	39	44	54	50
University Total	960	982	941	948	890	831	916	926	869	870

Doctorates

	1996-97	1997-98	1998-99	1999-00	2000-01	2001-02	2002-03	2003-04	2004-05	2005-06
Arts & Sciences	98	105	79	95	76	67	71	79	84	78
Engineering & Applied Sciences	31	28	31	30	30	16	24	24	33	19
The College Subtotal	129	133	110	125	106	83	95	103	117	97
Simon Graduate School of Business	7	7	2	4	3	7	4	7	4	11
Warner Graduate School of Education & Human Development	8	12	4	7	14	9	5	6	13	14
Eastman School of Music	29	26	26	36	24	44	33	30	36	34
School of Medicine & Dentistry	123	143	138	136	130	147	129	159	148	142
<i>Subtotal Doctorates</i>	31	39	39	34	45	38	49	56	47	43
<i>Subtotal MD's</i>	92	104	99	102	85	109	80	103	101	99
School of Nursing	3	3	5	5	4	4	4	7	2	1
University Total	299	324	285	313	281	294	270	312	320	299

All Degrees

	1996-97	1997-98	1998-99	1999-00	2000-01	2001-02	2002-03	2003-04	2004-05	2005-06
Arts & Sciences	1,115	1,163	1,059	1,084	952	944	1,067	1,042	1,063	1,009
Engineering & Applied Sciences	247	181	188	195	182	218	231	261	227	203
The College Subtotal	1,362	1,344	1,247	1,279	1,134	1,162	1,298	1,303	1,290	1,212
Simon Graduate School of Business	415	434	472	493	437	428	454	413	329	332
Warner Graduate School of Education & Human Development	92	108	67	62	67	70	76	70	110	100
University College	-	1	-	-	1	-	-	-	-	-
Eastman School of Music	211	222	241	220	201	257	253	240	206	268
School of Medicine & Dentistry	189	225	217	210	214	208	226	251	256	266
School of Nursing	154	171	121	111	110	94	96	135	132	137
University Total	2,423	2,505	2,365	2,375	2,164	2,219	2,403	2,412	2,323	2,315

*University College no longer exists. The degrees granted represent the final program completers.

Source: Student Information System

UNIVERSITY OF ROCHESTER

Degrees Conferred - Undergraduate Majors Completed

By School, Double Majors Counted Twice*

2003-04 2004-05 2005-06

THE COLLEGE

Arts & Sciences

African & African-American Studies	2	2	3
American Sign Language	9	10	9
Anthropology	11	11	10
Art & Art History	20	11	6
Art History	8	5	2
Studio Arts	12	6	4
Biological Sciences	80	81	91
Biochemistry	7	13	22
Cell & Development	13	11	13
Ecology & Evol Biol	10	12	13
Microbiology	17	5	6
Molecular Genetics	11	15	19
Neuroscience	22	25	18
Biology	64	45	53
Brain & Cognitive Science	20	28	35
Chemistry	16	22	23
Computer Science	51	37	28
Earth & Environmental Sciences	10	8	9
Biology-Geology	-	-	1
Environmental Sciences	1	-	2
Environmental Studies	-	5	-
Geological Sciences	9	3	6
Economics	127	146	131
English	60	80	66
Film and Media Studies	11	16	14
Health & Society	30	30	23
History	53	60	53
Interdepartmental	11	11	15
Linguistics	6	10	4
Mathematics	55	48	62
Applied Mathematics	19	6	10
Mathematics	35	41	52
Mathematics-Statistics	1	1	-
Modern Languages & Cultures	33	48	48
Comparative Literature	-	4	3
French	8	2	5
German	3	6	8
Japanese	4	10	10
Russian	4	4	7
Spanish	14	22	15
Music	8	6	11
Philosophy	7	20	18
Physics and Astronomy	14	19	27
Physics	12	16	19
Physics and Astronomy	2	3	8
Political Science	109	105	95
Psychology	142	136	102
Religion & Classics	38	23	28
Classics	2	1	2
Religion	36	22	26
Russian Studies	4	3	-
Statistics	8	15	10
Women's Studies	3	3	2
SUBTOTAL	1,002	1,034	976

UNIVERSITY OF ROCHESTER
Degrees Conferred - Undergraduate Majors Completed
By School, Double Majors Counted Twice*

2003-04 2004-05 2005-06

THE COLLEGE

School of Engineering and Applied Sciences

Biomedical Engineering	37	31	33
Chemical Engineering	17	13	14
Electrical and Computer Engineering	35	29	19
Engineering Science	4	4	3
Geomechanics	2	2	2
Interdepartmental Engineering	2	-	-
Mechanical Engineering	23	25	30
Optics	24	22	16
SUBTOTAL	144	126	117

THE COLLEGE SUBTOTAL

1,146	1,160	1,093
-------	-------	-------

Eastman School of Music

Applied Music	89	76	113
Composition	5	2	2
Jazz Studies & Contemporary Media	5	9	5
Music Education - General	1	2	4
Music Education - Instrumental	17	7	15
Music Education - Vocal	5	0	3
Music Theory	2	0	2
Musical Arts	2	1	1
SUBTOTAL	126	97	145

School of Nursing

84	76	86
----	----	----

TOTAL UNIVERSITY

1,356	1,333	1,324
-------	-------	-------

*Totals on this table are greater than the total number of degrees conferred because double majors are reported here.
 The University awards the following Bachelor's Degrees: BA, BS, BM

Source: IR Office Report from Student Information System

UNIVERSITY OF ROCHESTER
Degrees Conferred - Graduate Majors Completed
By School, Double Majors Counted Twice*

	2003-04		2004-05		2005-06	
	Mast.	Doc.	Mast.	Doc.	Mast.	Doc.
THE COLLEGE - Arts and Sciences						
Biology	5	6	10	5	4	3
Brain & Cognitive Sciences	4	2	3	1	8	3
Chemistry	21	10	20	4	18	7
Computer Science	7	10	13	9	10	8
Earth & Environ Sciences (Geological)	2	2	0	1	6	1
Economics	20	4	8	16	18	9
English	18	8	22	3	14	7
History	4	4	1	6	3	5
Interdepartmental Studies	1	0	0	-	-	-
Linguistics	0	0	0	-	1	-
Mathematics	7	4	8	2	5	2
Modern Languages & Cultures	1	1	2	0	1	-
Comparative Literature	1	1	2	-	1	-
Philosophy	4	1	2	3	4	1
Physics & Astronomy	18	12	25	22	10	14
Physics	18	12	25	21	10	13
Physics & Astronomy	0	0	0	1	-	1
Political Science	5	2	7	5	5	8
Psychology	8	10	8	4	7	4
Psychology	8	-	8	-	7	-
Clinical	-	8	-	3	-	3
Developmental	-	-	-	1	-	1
Social-Personality	-	2	-	-	-	-
Visual and Cultural Studies	1	3	5	3	3	6
SUBTOTAL	126	79	134	84	117	78

THE COLLEGE - School of Engineering and Applied Sciences

Biomedical Engineering	11	1	7	2	8	2
Chemical Engineering	24	1	14	1	12	3
Electrical & Computer Engineering	6	0	5	0	3	-
Electrical Engineering	10	10	24	11	18	6
Materials Science	6	1	1	4	5	-
Mechanical Engineering	15	1	6	4	6	2
Optics	21	10	11	11	15	6
SUBTOTAL	93	24	68	33	67	19

THE COLLEGE TOTAL

219	103	202	117	184	97
------------	------------	------------	------------	------------	-----------

Simon Graduate School of Business Administration

Master of Science	19	0	20	0	31	-
Business Administration	277	7	252	4	216	11
Business Admin. - Executive Development	34	0	19	0	39	-
Business Admin. - Bern, Switzerland	54	0	34	0	35	-
Business Admin. - Nijenrode, Netherlands	22	0	0	0	-	-
SUBTOTAL	406	7	325	4	321	11

UNIVERSITY OF ROCHESTER

Degrees Conferred - Graduate Majors Completed

By School, Double Majors Counted Twice*

	2003-04		2004-05		2005-06	
	Mast.	Doc.	Mast.	Doc.	Mast.	Doc.
Warner Graduate School of Education and Human Development						
Curriculum Elementary	1	-	-	-	-	-
Curriculum Secondary English	1	-	-	-	-	-
Curriculum Secondary Soc Studies	1	-	-	-	1	-
Education Administration	1	-	-	-	-	-
EDD - Administration (GEN)	-	-	-	4	-	3
EDD - Administration (SAS)	-	-	-	1	-	-
EDD - Counseling	-	1	-	-	-	1
EDD - Higher Ed	-	1	-	2	-	1
EDD - Teaching & Curriculum	-	-	-	-	-	3
MAT - English (7-12)	1	-	-	-	1	-
MAT - German (7-12)	-	-	-	-	1	-
MAT - Social St (7-12)	-	-	2	-	1	-
MS - Administration (CATH)	2	-	2	-	3	-
MS - Administration (GEN)	-	-	-	-	1	-
MS - Administration (SAS)	3	-	4	-	4	-
MS - Biology (5-12)	1	-	2	-	-	-
MS - Biology (7-12)	2	-	2	-	5	-
MS - Community Counseling	5	-	6	-	7	-
MS - Earth Sc (7-12)	-	-	1	-	-	-
MS - Elementary (1-6)	5	-	2	-	8	-
MS - English (7-12)	4	-	1	-	-	-
MS - Higher Ed	5	-	8	-	11	-
MS - Human Dev	1	-	5	-	4	-
MS - Math (7-12)	-	-	2	-	-	-
MS - Math/Inclusion (5-12)	-	-	1	-	-	-
MS - Physics (7-12)	-	-	1	-	-	-
MS - School Counseling	16	-	21	-	12	-
MS - School Counseling (3+2)	-	-	1	-	-	-
MS - School Counseling (COMM)	1	-	7	-	4	-
MS - Social St (5-12)	-	-	1	-	-	-
MS - Social Studies (7-12)	-	-	2	-	2	-
MS - Spanish (5-12)	-	-	1	-	-	-
MS - Spanish (7-12)	2	-	1	-	3	-
MS - Teaching & Curriculum	7	-	6	-	4	-
MS - TESOL	1	-	2	-	2	-
MS in Adol Ed: Chemistry	1	-	1	-	1	-
MS in Adol Ed: Spanish	-	-	1	-	-	-
MS in Ed Admin/HED/Stu Affairs	-	-	-	-	1	-
MS in Spanish 7-12	-	-	1	-	-	-
MS -Social St/Inclusion (5-12)	-	-	1	-	-	-
MS Tchng & Curr/Spec TESOL	-	-	1	-	-	-
MS-D/Elementary 1-6T	1	-	-	-	-	-
MS-D/Social St 7-12T	-	-	1	-	-	-
MS-Early Childhood (B-2)	-	-	1	-	1	-
MS-Early Childhood/I B-2	1	-	-	-	-	-
MS-Earth Sc/Inclusion (7-12)	-	-	-	-	1	-
MS-Elementary Inclusion Prof.	-	-	1	-	-	-
MS-Elementary Prof.	-	-	1	-	1	-
MS-Elementary/Inclusion (1-6)	-	-	1	-	-	-
MS-English Prof.	-	-	-	-	1	-
MS-Literacy B-6	1	-	1	-	1	-
MS-Math Prof.	-	-	1	-	1	-
MS-Math/Inclusion (7-12)	-	-	-	-	1	-
MS-Physics Prof.	-	-	-	-	1	-
MS-Social St. Prof.	-	-	2	-	1	-
MS-Spanish Prof.	-	-	2	-	1	-
PHD - Counseling	-	1	-	-	-	-
PHD - Higher Education	-	-	-	-	-	1
PHD in Ed-W/Conc in Hum Dev	-	1	-	3	-	1
PHD -Teaching & Curriculum	-	2	-	3	-	4
SUBTOTAL	64	6	97	13	86	14

UNIVERSITY OF ROCHESTER
Degrees Conferred - Graduate Majors Completed
By School, Double Majors Counted Twice*

	2003-04		2004-05		2005-06	
	Mast.	Doc.	Mast.	Doc.	Mast.	Doc.
Eastman School of Music						
Composition	4	0	2	4	3	2
Conducting	7	1	0	1	2	1
Early Music History	-	-	-	-	2	-
Jazz Studies & Contemp Media	3	0	4	0	5	1
Jazz Studies & Contemp Media-Writing	2	0	0	0	-	-
Music Education	9	2	6	1	7	1
Music Theory	3	6	2	4	5	3
Musicology	2	4	2	1	4	3
Opera	0	0	1	0	1	-
Performance & Literature	66	18	63	23	73	19
Piano Accompanying & Chamber Music	2	0	2	2	1	4
Theory Pedagogy	5	0	1	0	4	-
SUBTOTAL	103	31	83	36	107	34

School of Medicine and Dentistry

Anatomy	0	0	1	0	3	-
Biochemistry	14	10	10	6	12	8
Biophysics	4	5	5	3	4	5
Dental Science	2	0	0	0	1	-
Genetics	6	3	5	1	6	2
Health Services Research	0	1	0	4	0	1
Marriage & Family Therapy	4	0	14	0	8	-
Medical Statistics	-	-	-	-	1	-
Microbiology & Immunology	14	10	13	9	22	13
Neuroscience	3	5	7	5	12	4
Pathology	5	13	7	5	8	2
Pharmacology	6	5	9	5	8	2
Public Health	6	0	10	0	9	-
Public Health - Clinical Investigation	18	0	17	0	19	-
Statistics	2	0	2	0	3	2
Toxicology	8	4	8	9	8	4
SUBTOTAL without MDs	92	56	108	47	124	43
MD's (First Professional)	0	103	0	101	-	99
SUBTOTAL with MDs	92	159	108	148	124	142

School of Nursing

Acute Care Cardiovascular	2	0	0	0	1	-
Acute Critical Care Nurse Practitioner	3	0	11	0	3	-
Adult Nurse Practitioner	8	0	0	0	9	-
Care of Children & Families	11	0	8	0	5	-
Family Nurse Practitioner	12	0	11	0	14	-
Gerontological Nurse Practitioner	0	0	1	0	-	-
Leadership in Health Care Sys	0	0	21	0	16	-
Disaster Response & Emer Prepar	0	0	7	0	6	-
Health Promo, Edu & Tech	0	0	14	0	10	-
Neonatal Nurse Practitioner	1	0	0	0	-	-
Nursing	0	7	0	2	-	1
Ped Nur Prac/Psych Mental Health	1	0	0	0	1	-
Psych Mental Health	6	0	2	0	1	-
SUBTOTAL	44	7	54	2	50	1

	2003-04		2004-05		2005-06	
	Mast.	Doc.	Mast.	Doc.	Mast.	Doc.
TOTAL UNIVERSITY	928	313	869	320	872	299

*Totals on this table are greater than the total number of degrees conferred because double majors are reported here.

The University awards the following Master's and Doctorate degrees:

MA, MS, MM, MPH, MBA, MAT, PhD, EdD, DMA

Source: IR Office Report from Student Information System

UNIVERSITY OF ROCHESTER
Certificates Conferred

	2003-04	2004-05	2005-06
With Bachelor's Degrees			
Actuarial Studies	6	9	9
Asian Studies	-	-	1
Biotechnology	3	-	1
International Relations	11	16	10
Management Studies	145	133	110
Mathematical Modeling in Political Science & Economics	2	4	8
Polish & Central European Studies	2	1	-
Citation for Achievement in College Leadership	-	5	4
Postbaccalaureate			
Music	9	11	12
Post Master's			
Nursing	4	2	12
First-professional			
Dentistry	38	50	40

Sources: College Center for Academic Support; School of Nursing, Eastman Dental Center; Institutional Research

UNIVERSITY OF ROCHESTER
Admissions Activity

Fall **1997** **1998** **1999** **2000** **2001** **2002** **2003** **2004** **2005** **2006**

College: First Time Full-time Freshmen (Arts & Sciences, Engineering & Applied Sciences)

Number of Applicants	9,147	8,782	8,656	10,082	9,579	8,682	10,486	11,099	11,293	11,316
Number Offered	5,166	5,189	5,714	5,086	5,041	4,846	5,096	5,292	5,380	5,139
Entered	799	968	1,087	930	1,008	934	976	971	997	1,112

University: First Time Full-time Freshmen (College and Eastman School of Music)

Number of Applicants	9,983	9,760	9,623	11,133	10,602	9,606	11,381	12,023	12,262	12,245
Number Offered	5,402	5,771	5,975	5,335	5,294	5,091	5,385	5,541	5,607	5,373
Entered	908	1,077	1,221	1,051	1,117	1,063	1,124	1,091	1,114	1,233

University: Graduate Students

Number of Applicants	6,839	7,103	6,785	7,798	7,704	9,229	10,020	6,829	6,606	7,414
Number Offered	1,908	1,902	1,723	1,855	1,945	1,804	1,981	1,785	1,769	1,930
Entered	945	947	971	860	1,007	911	997	952	947	1,111

First Professional Students (M.D. Degree)

Number of Applicants	3,914	7,018	5,865	5,111	4,305	3,845	3,969	3,975	4,243	4,233
Number Offered	276	248	288	252	280	281	275	272	260	281
Entered	100	100	100	98	100	100	100	100	100	101

Source: Admissions Offices; Graduate Dean

UNIVERSITY OF ROCHESTER

Enrollment - Total (Full-time and Part-time Students) Fall Semester

Undergraduate

	1997-98	1998-99	1999-00	2000-01	2001-02	2002-03	2003-04	2004-05	2005-06	2006-07
Arts & Sciences*	3,695	3,532	3,527	3,540	3,690	3,702	3,625	3,629	3,699	3,843
Engineering & Applied Sciences**	208	218	208	222	280	269	237	217	195	214
The College Subtotal	3,903	3,750	3,735	3,762	3,970	3,971	3,862	3,846	3,894	4,057
Eastman School of Music	462	468	485	481	475	482	480	480	501	482
School of Nursing	189	159	145	143	122	104	119	122	137	193
Subtotal	4,554	4,377	4,365	4,386	4,567	4,557	4,461	4,448	4,532	4,732
Non-matriculated	146	126	135	138	149	173	149	113	194	205
Total	4,700	4,503	4,500	4,524	4,716	4,730	4,610	4,561	4,726	4,937

Graduate and Professional Students

	1997-98	1998-99	1999-00	2000-01	2001-02	2002-03	2003-04	2004-05	2005-06	2006-07
Arts & Sciences	721	660	632	600	638	627	671	650	663	656
Engineering & Applied Sciences	244	248	238	225	220	271	308	298	322	374
The College Subtotal	965	908	870	825	858	898	979	948	985	1,030
Simon Graduate School of Business	748	764	780	727	744	804	732	572	513	577
Warner Graduate School of Education & Human Development	236	204	226	259	274	293	310	333	411	437
Eastman School of Music	355	329	315	331	334	359	392	387	407	398
School of Medicine & Dentistry, M.D.	419	419	412	412	418	417	439	424	414	410
School of Medicine & Dentistry, M.S. & Ph.D.	357	342	371	380	433	451	484	517	554	573
School of Nursing	199	171	158	157	140	149	129	156	164	170
Subtotal	3,279	3,137	3,132	3,091	3,201	3,371	3,465	3,337	3,448	3,595
Non-matriculated	550	605	515	582	573	524	534	555	556	495
Total	3,829	3,742	3,647	3,673	3,774	3,895	3,999	3,892	4,004	4,090

All

	1997-98	1998-99	1999-00	2000-01	2001-02	2002-03	2003-04	2004-05	2005-06	2006-07
Arts & Sciences	4,416	4,192	4,159	4,140	4,328	4,329	4,296	4,279	4,362	4,499
Engineering & Applied Sciences	452	466	446	447	500	540	545	515	517	588
The College Subtotal	4,868	4,658	4,605	4,587	4,828	4,869	4,841	4,794	4,879	5,087
Simon Graduate School of Business	748	764	780	727	744	804	732	572	513	577
Warner Graduate School of Education & Human Development	236	204	226	259	274	293	310	333	411	437
Eastman School of Music	817	797	800	812	809	841	872	867	908	880
School of Medicine & Dentistry, M.D.	419	419	412	412	418	417	439	424	414	410
School of Medicine & Dentistry, M.S. & Ph.D.	357	342	371	380	433	451	484	517	554	573
School of Nursing	388	330	303	300	262	253	248	278	301	363
University, Subtotal	7,833	7,514	7,497	7,477	7,768	7,928	7,926	7,785	7,980	8,327
Non-matriculated	696	731	650	720	722	697	683	668	750	700
University Total	8,529	8,245	8,147	8,197	8,490	8,625	8,609	8,453	8,730	9,027

*Older dates may include a small number of students enrolled in University College (a unit which has been phased out).

**This table shows only Junior and Senior Engineering majors in Engineering & Applied Sciences. Reporting in some past years also included Freshman and Sophomore intended Engineering majors.

Source: UR-10 Reports

UNIVERSITY OF ROCHESTER

Enrollment - By School, Showing Full-time, Part-time Status

UNDERGRADUATES	Fall 2004			Fall 2005			Fall 2006		
	FT	PT	Total	FT	PT	Total	FT	PT	Total
Arts & Sciences	3,589	40	3,629	3,663	36	3,699	3,814	29	3,843
Engineering & Applied Sciences	213	4	217	195	-	195	213	1	214
SUBTOTAL COLLEGE	3,802	44	3,846	3,858	36	3,894	4,027	30	4,057
Eastman School of Music	479	1	480	498	3	501	479	3	482
Nursing	59	63	122	64	73	137	93	100	193
SUBTOTAL	4,340	108	4,448	4,420	112	4,532	4,599	133	4,732
Non-matriculated	7	106	113	15	179	194	9	196	205
TOTAL UNIVERSITY	4,347	214	4,561	4,435	291	4,726	4,608	329	4,937

UNDERGRADUATES	Spring 2005			Spring 2006			Spring 2007		
	FT	PT	Total	FT	PT	Total	FT	PT	Total
Arts & Sciences	3,517	45	3,562	3,570	39	3,609			
Engineering & Applied Sciences	224	2	226	201	4	205			
SUBTOTAL COLLEGE	3,741	47	3,788	3,771	43	3,814	-	-	-
Eastman School of Music	473	2	475	465	5	470			
Nursing	55	64	119	60	83	143			
SUBTOTAL	4,269	113	4,382	4,296	131	4,427	-	-	-
Non-matriculated	2	119	121	1	176	177			
TOTAL UNIVERSITY	4,271	232	4,503	4,297	307	4,604	-	-	-

UNIVERSITY OF ROCHESTER

Enrollment - By School, Showing Full-time, Part-time Status

GRADUATE STUDENTS	Fall 2004			Fall 2005			Fall 2006		
	FT	PT	Total	FT	PT	Total	FT	PT	Total
Arts & Sciences	637	13	650	656	7	663	651	5	656
Engineering & Applied Sciences	271	27	298	295	27	322	350	24	374
SUBTOTAL COLLEGE	908	40	948	951	34	985	1,001	29	1,030
Simon School	457	115	572	367	146	513	391	186	577
Warner School	116	217	333	129	282	411	123	314	437
Eastman School of Music	355	32	387	354	53	407	350	48	398
Medicine & Dentistry (MD)	424	-	424	414	-	414	410	-	410
Medicine & Dentistry (Other)	432	85	517	473	81	554	490	83	573
Nursing	40	116	156	37	127	164	42	128	170
SUBTOTAL	2,732	605	3,337	2,725	723	3,448	2,807	788	3,595
Non-matriculated (includes Eastman Dental Center)	57	498	555	94	462	556	93	402	495
TOTAL UNIVERSITY	2,789	1,103	3,892	2,819	1,185	4,004	2,900	1,190	4,090

GRADUATE STUDENTS	Spring 2005			Spring 2006			Spring 2007		
	FT	PT	Total	FT	PT	Total	FT	PT	Total
Arts & Sciences	615	11	626	614	4	618			
Engineering & Applied Sciences	261	22	283	286	23	309			
SUBTOTAL COLLEGE	876	33	909	900	27	927	-	-	-
Simon School - Winter Quarter	519	144	663	460	158	618			
Warner School	117	237	354	130	293	423			
Eastman School of Music	342	29	371	332	56	388			
Medicine & Dentistry (MD)	411	-	411	414	-	414			
Medicine & Dentistry (Other)	412	91	503	457	75	532			
Nursing	51	135	186	45	150	195			
SUBTOTAL	2,728	669	3,397	2,738	759	3,497	-	-	-
Non-matriculated (includes Eastman Dental Center)	54	395	449	92	365	457			
TOTAL UNIVERSITY	2,782	1,064	3,846	2,830	1,124	3,954	-	-	-

GRADUATE STUDENTS	Simon Spring Qtr 2005			Simon Spring Qtr 2006			Simon Spring Qtr 2007		
	FT	PT	Total	FT	PT	Total	FT	PT	Total
Simon School - Spring Quarter	506	143	649	462	160	622	-	-	-
Non-matriculated - Simon Spring Quarter	-	106	106	-	91	91	-	-	-
TOTAL UNIVERSITY	506	249	755	462	251	713	-	-	-

UNIVERSITY OF ROCHESTER

Enrollment - By School, Showing Full-time, Part-time Status

ALL STUDENTS	Fall 2004			Fall 2005			Fall 2006		
	FT	PT	Total	FT	PT	Total	FT	PT	Total
Arts & Sciences	4,226	53	4,279	4,319	43	4,362	4,465	34	4,499
Engineering & Applied Sciences	484	31	515	490	27	517	563	25	588
SUBTOTAL COLLEGE	4,710	84	4,794	4,809	70	4,879	5,028	59	5,087
Simon School	457	115	572	367	146	513	391	186	577
Warner School	116	217	333	129	282	411	123	314	437
Eastman School of Music	834	33	867	852	56	908	829	51	880
Medicine & Dentistry (MD)	424	-	424	414	-	414	410	-	410
Medicine & Dentistry (Other)	432	85	517	473	81	554	490	83	573
Nursing	99	179	278	101	200	301	135	228	363
SUBTOTAL	7,072	713	7,785	7,145	835	7,980	7,406	921	8,327
Non-matriculated	64	604	668	109	641	750	102	598	700
TOTAL UNIVERSITY	7,136	1,317	8,453	7,254	1,476	8,730	7,508	1,519	9,027

ALL STUDENTS	Spring 2005			Spring 2006			Spring 2007		
	FT	PT	Total	FT	PT	Total	FT	PT	Total
Arts & Sciences	4,132	56	4,188	4,184	43	4,227	-	-	-
Engineering & Applied Sciences	485	24	509	487	27	514	-	-	-
SUBTOTAL COLLEGE	4,617	80	4,697	4,671	70	4,741	-	-	-
Simon School	519	144	663	460	158	618	-	-	-
Warner School	117	237	354	130	293	423	-	-	-
Eastman School of Music	815	31	846	797	61	858	-	-	-
Medicine & Dentistry (MD)	411	-	411	414	-	414	-	-	-
Medicine & Dentistry (Other)	412	91	503	457	75	532	-	-	-
Nursing	106	199	305	105	233	338	-	-	-
SUBTOTAL	6,997	782	7,779	7,034	890	7,924	-	-	-
Non-matriculated	56	514	570	93	541	634	-	-	-
TOTAL UNIVERSITY	7,053	1,296	8,349	7,127	1,431	8,558	-	-	-

ALL SIMON SPRING	Simon Spring Qtr 2005			Simon Spring Qtr 2006			Simon Spring Qtr 2007		
	FT	PT	Total	FT	PT	Total	FT	PT	Total
Simon School - Spring Quarter	506	143	649	462	160	622	-	-	-
Non-matriculated - Simon Spring Quarter	-	106	106	-	91	91	-	-	-
TOTAL UNIVERSITY	506	249	755	462	251	713	-	-	-

Sources:

UR-10 Parts IA and IIA: 10/8/04, 10/14/05 and 10/13/06 for Fall;

UR-20 Parts IA and IIA: 2/18/05 and 2/24/06 for Spring;

UR-23B Parts IV and V: 6/15/06, 10/24/06 for Simon Spring Quarters.

Notes:

Simon School Fall Quarter is not as far into its quarter session as other schools are into the semester calendar. Therefore, numbers are not necessarily representative of the outcome of Simon Fall quarterly activity.

Totals include students in Take 5 Program.

UNIVERSITY OF ROCHESTER
Enrolled Students: Declared Ethnic Origin*

FALL 2006	TOTAL		Nonresident alien		Black, non-Hispanic		American Indian/Alaska Native		Asian/Pacific Islander		Hispanic		White, non-Hispanic		Unknown	
	M	W	M	W	M	W	M	W	M	W	M	W	M	W	M	W
	Undergraduates-Full Time															
First-time Freshmen - College	592	508	29	22	21	26	1	1	64	52	18	30	319	272	140	105
First-time Freshmen - Eastman	66	53	3	9	2	1	-	1	4	4	4	-	48	29	5	9
All other Freshmen	25	11	5	4	3	1	-	-	2	1	4	-	9	2	2	3
Sophomores	542	579	31	29	17	31	1	1	53	58	23	32	361	360	56	68
Juniors	600	493	25	14	26	22	-	2	51	48	21	15	404	325	73	67
Seniors	529	591	20	25	23	30	1	4	68	65	14	33	316	361	87	73
Kauffman Students	3	2	-	-	-	-	-	-	-	1	-	-	2	-	1	1
Unclassified	3	6	3	6	-	-	-	-	-	-	-	-	-	-	-	-
SUBTOTAL	2,360	2,243	116	109	92	111	3	9	242	229	84	110	1,459	1,349	364	326
Undergraduates-Part Time																
Juniors	13	101	-	-	1	8	-	-	-	2	-	4	9	81	3	6
Seniors	9	8	-	-	1	-	-	-	-	2	-	-	6	5	2	1
Unclassified	43	127	-	3	2	9	-	-	4	3	1	1	18	83	18	28
SUBTOTAL	65	236	-	3	4	17	-	-	4	7	1	5	33	169	23	35
TOTAL Undergraduates	2,425	2,479	116	112	96	128	3	9	246	236	85	115	1,492	1,518	387	361
First Professional																
First-time	53	51	-	-	1	7	-	1	6	11	1	1	40	24	5	7
All others	132	167	-	-	5	17	-	1	28	43	-	-	94	102	5	4
TOTAL First Professional	185	218	-	-	6	24	-	2	34	54	1	1	134	126	10	11
Graduate Students-Full Time																
First-time Ph.D.	147	120	68	48	2	3	-	1	5	14	2	3	62	46	8	5
All others Masters/Doctoral	1,160	934	487	369	24	24	1	2	40	62	21	24	498	394	89	59
Unclassified	5	2	2	2	-	-	-	-	-	-	-	-	1	-	2	-
SUBTOTAL	1,312	1,056	557	419	26	27	1	3	45	76	23	27	561	440	99	64
Graduate Students-Part Time																
First-time Ph.D.	2	9	-	-	-	1	-	-	-	-	-	-	2	7	-	1
All others Masters/Doctoral	302	472	16	9	8	41	-	1	17	15	4	12	227	369	30	25
Unclassified	163	223	6	5	5	11	1	1	4	7	3	9	113	168	31	22
SUBTOTAL	467	704	22	14	13	53	1	2	21	22	7	21	342	544	61	48
TOTAL Graduates	1,779	1,760	579	433	39	80	2	5	66	98	30	48	903	984	160	112
Total University	4,389	4,457	695	545	141	232	5	16	346	388	116	164	2,529	2,628	557	484

* This report indicates the ethnic origin of students, as reported by the students. Definitions are below.

Numbers 1-5 apply to all except those who are Nonresident aliens

1. Asian/Pacific Islander: A person having origins in any of the original peoples of the Far East, Southeast Asia, the Indian Subcontinent, or Pacific Islands
2. Black, non-Hispanic: A person having origins in any of the black racial groups of Africa (except those of Hispanic origin)
3. White, non-Hispanic: A person having origins in any of the original peoples of Europe, North Africa, or the Middle East (except those of Hispanic origin)
4. Hispanic: A person of Mexican, Puerto Rican, Cuban, Central or South American, or other Spanish culture or origin, regardless of race
5. American Indian/Alaska Native: A person having origins in any of the original peoples of North America and who maintains cultural identification through tribal affiliation or community recognition
6. Nonresident alien: A person who is not a citizen or national of the United States and who is in this country on a visa or temporary basis and does not have the right to remain indefinitely
7. Race/Ethnicity Unknown: Used only if the student did not select a racial-ethnic designation and the institution finds it impossible to place the student in one of the aforementioned racial/ethnic categories

Source: IPEDS-EF1 Report. Totals may differ from internal University Student Information System reports. Simon Bern Executive students are excluded.

UNIVERSITY OF ROCHESTER

Geographic Distribution of Full-time Students

FALL 2006 (as of October 13, 2006)

		ALL		Arts & Sciences		Engineering		Simon School	Warner School	Eastman		SMD	Nursing		Eastman Dental*	
		UGs	Grads	UGs	Grads	UGs	Grads	Grads	Grads	UGs	Grads	Grads	UGs	Grads	Grads	
Middle Atlantic Region	District of Columbia	14	4	14	-	-	1	-	-	1	-	-	2	-	-	-
	Delaware	6	2	3	2	2	-	-	-	-	-	-	-	1	-	-
	Maryland	121	28	107	9	2	3	2	1	12	5	8	-	-	-	-
	New Jersey	216	23	191	4	7	5	3	1	17	5	5	1	-	-	-
	New York	2,123	714	1,881	131	99	66	151	77	90	44	187	53	34	-	24
	NY % of Total	46%	29%													
	Pennsylvania	252	84	204	36	21	7	3	2	27	21	14	-	-	-	1
	West Virginia	-	1	-	1	-	-	-	-	-	-	-	-	-	-	-
New England Region	Connecticut	118	24	93	8	7	3	2	-	18	9	2	-	-	-	-
	Massachusetts	252	38	225	13	11	9	1	1	15	7	7	1	-	-	-
	Maine	22	9	18	2	1	1	-	-	3	1	5	-	-	-	-
	New Hampshire	37	12	30	4	-	1	-	-	4	3	3	3	-	-	-
	Rhode Island	19	3	16	1	2	-	1	-	-	-	1	1	-	-	-
	Vermont	32	6	29	2	2	2	-	-	-	-	1	1	1	-	-
Great Lakes Region	Illinois	91	26	65	8	4	4	3	-	21	6	5	1	-	-	-
	Indiana	9	5	5	3	2	1	-	-	2	-	1	-	-	-	-
	Michigan	40	17	27	6	1	2	1	-	12	7	1	-	-	-	-
	Ohio	139	46	109	18	8	4	2	1	21	12	8	1	1	-	-
	Wisconsin	31	10	14	5	2	2	-	-	15	2	1	-	-	-	-
South-eastern Region	Alabama	6	3	5	1	-	-	-	-	1	-	2	-	-	-	-
	Arkansas	1	1	1	-	-	-	-	-	-	1	-	-	-	-	-
	Florida	56	12	42	3	3	1	-	-	11	4	4	-	-	-	-
	Georgia	20	15	11	4	-	1	1	2	8	5	1	1	1	-	-
	Kentucky	8	4	5	1	-	-	-	1	2	2	-	1	-	-	-
	Louisiana	9	7	8	4	-	1	-	-	1	2	-	-	-	-	-
	Mississippi	3	-	3	-	-	-	-	-	-	-	-	-	-	-	-
	North Carolina	24	12	15	6	1	1	-	1	7	4	-	1	-	-	-
	South Carolina	17	5	6	3	1	-	-	-	10	-	1	-	-	-	1
	Tennessee	16	2	10	1	2	-	-	-	4	-	1	-	-	-	-
	Virginia	69	27	50	9	3	3	4	2	16	7	2	-	-	-	-
Central Region	Iowa	6	5	3	1	-	-	-	-	3	4	-	-	-	-	-
	Kansas	10	3	9	-	-	-	-	-	1	-	3	-	-	-	-
	Minnesota	31	8	22	1	-	-	-	-	7	7	-	2	-	-	-
	Missouri	16	10	13	3	-	4	-	-	3	1	2	-	-	-	-
	North Dakota	6	1	3	1	1	-	-	-	2	-	-	-	-	-	-
	Nebraska	4	3	3	1	-	-	-	-	1	2	-	-	-	-	-
	South Dakota	1	-	-	-	1	-	-	-	-	-	-	-	-	-	-
South-western Region	Arizona	15	9	12	3	-	-	-	-	3	2	4	-	-	-	-
	New Mexico	8	5	6	1	-	-	-	1	2	2	1	-	-	-	-
	Oklahoma	6	4	4	1	-	-	-	-	2	2	1	-	-	-	-
	Texas	87	25	62	10	1	1	-	1	21	11	2	3	-	-	-
Mountain Region	Colorado	29	17	16	5	3	5	1	-	10	4	2	-	-	-	-
	Idaho	4	4	3	1	-	1	1	-	1	1	-	-	-	-	-
	Montana	3	2	2	1	-	-	-	-	1	1	-	-	-	-	-
	Nevada	7	-	5	-	-	-	-	-	2	-	-	-	-	-	-
	Utah	4	13	3	2	-	2	1	1	-	1	6	1	-	-	-
	Wyoming	-	1	-	-	-	-	1	-	-	-	-	-	-	-	-
Pacific Region	Alaska	7	4	5	1	-	1	-	-	2	2	-	-	-	-	-
	California	128	64	94	23	2	2	7	1	23	19	12	9	-	-	-
	Hawaii	10	2	9	-	-	-	-	-	1	1	1	-	-	-	-
	Oregon	28	15	22	9	2	2	-	1	4	3	-	-	-	-	-
	Washington	37	17	25	5	1	2	1	1	10	2	6	1	-	-	-
Other	Guam	-	-	-	-	-	-	-	-	-	-	-	-	-	-	-
	Puerto Rico	4	9	4	1	-	-	1	-	-	-	7	-	-	-	-
	Virgin Islands	1	-	1	-	-	-	-	-	-	-	-	-	-	-	-
	AE**	1	-	1	-	-	-	-	-	-	-	-	-	-	-	-
	Foreign	376	1,069	283	289	19	198	198	24	63	135	180	11	3	-	42
	Unknown	-	49	-	6	-	13	6	2	-	2	1	-	2	-	17
	Military Base	19	4	17	1	2	1	-	-	-	1	-	-	-	-	1
TOTAL	4,599	2,483	3,814	651	213	350	391	123	479	350	490	93	42	86		

*Eastman Dental Center are non-matriculated. Other non-matriculated students are not reported on this table.

**Military: US Armed Forces Overseas.

Source: UR-13 Reports

UNIVERSITY OF ROCHESTER

UNDERGRADUATE ENROLLMENT BY MAJOR - OFFICIAL & UNOFFICIAL

By School, All Students, Fall Semester

	2004-05		2005-06		2006-07	
	Unofficial	Official	Unofficial	Official	Unofficial	Official
THE COLLEGE						
Arts & Sciences						
African & African-American Studies	-	5	1	8	2	9
American Sign Language	5	15	6	15	10	14
Anthropology	12	27	18	28	18	29
Art & Art History	11	19	13	15	20	28
Art History	7	4	7	5	13	8
Studio Arts	4	15	6	10	7	20
Biological Sciences	199	175	145	210	154	239
Biochemistry	77	37	59	52	50	45
Cell & Development	21	24	12	38	14	34
Ecology & Evol Biol	7	22	3	24	11	27
Microbiology	17	10	14	17	11	27
Molecular Genetics	37	37	23	32	28	46
Neuroscience	40	45	34	47	40	60
Biology	353	93	329	96	297	101
Brain & Cognitive Sciences	28	56	24	58	24	70
Chemistry	43	46	47	37	59	38
Clinical & Social Psychology	133	214	116	204	137	218
Cognitive Science	2	-	2	-	1	-
Computer Science	73	69	55	53	42	50
Earth & Environmental Sciences	27	19	21	18	19	22
Biology-Geology	1	1	2	1	1	-
Environmental Sciences	8	-	4	5	10	6
Environmental Studies	15	8	14	4	7	4
Geological Sciences	3	10	1	8	1	12
Economics	125	218	130	188	146	159
English	75	138	82	127	79	139
Film and Media Studies	20	28	25	25	18	21
Health & Society	20	53	20	45	17	41
History	72	96	72	83	66	101
Interdepartmental	5	10	3	18	5	17
Linguistics	8	19	5	14	14	21
Mathematics	64	90	59	101	64	93
Applied Mathematics	8	13	3	16	6	17
Computer Science:Mathematics	4	-	2	-	2	-
Mathematics	49	75	49	83	53	71
Mathematics-Statistics	3	2	5	2	3	5
Modern Languages & Cultures	36	91	27	85	38	72
Comparative Literature	1	5	-	4	1	4
French	14	10	11	15	13	23
German	3	12	4	13	2	10
Japanese	2	17	1	19	8	10
Russian	-	11	1	7	1	3
Spanish	16	36	10	27	13	22
Music	21	14	25	25	32	25
Philosophy	7	36	4	30	14	20
Physics and Astronomy	69	55	64	64	62	74
Physics	42	45	38	51	36	61
Physics and Astronomy	27	10	26	13	26	13
Political Science	111	168	102	172	108	171
Religion & Classics	12	44	12	58	10	54
Classics	6	3	5	7	4	6
Religious Studies	6	41	7	51	6	48
Russian Studies	-	2	2	2	2	2
Sociology	3	-	2	-	-	-
Statistics	2	17	2	16	7	14
Women's Studies	1	2	1	4	2	5
Miscellaneous (Uncertain of Major)	346	-	513	-	548	-
3-2 Simon	8	-	3	-	-	-
Unknown	338	-	510	-	548	-
SUBTOTAL	1,883	1,819	1,927	1,799	2,015	1,847

UNIVERSITY OF ROCHESTER
UNDERGRADUATE ENROLLMENT BY MAJOR - OFFICIAL & UNOFFICIAL
By School, All Students, Fall Semester

	2004-05		2005-06		2006-07	
	Unofficial	Official	Unofficial	Official	Unofficial	Official
THE COLLEGE						
School of Engineering and Applied Sciences						
Biomedical Engineering	100	64	118	70	159	73
Chemical Engineering	29	25	47	26	62	29
Electrical & Computer Engineering	56	43	46	27	53	24
Engineering Science	14	1	26	1	24	-
Geomechanics	-	4	-	3	1	-
Interdepartmental Engineering	5	-	1	-	4	-
Mechanical Engineering	86	49	99	44	76	62
Optics	39	38	35	32	35	34
SUBTOTAL	329	224	372	203	414	222

THE COLLEGE SUBTOTAL	2,212	2,043	2,299	2,002	2,429	2,069
-----------------------------	-------	-------	-------	-------	-------	-------

Eastman School of Music						
Applied Music	1	413	1	428	1	412
Composition	-	13	-	13	-	14
Jazz & Contemp Media	-	38	-	41	1	43
Jazz & Contemp Media - Writing	-	1	-	2	-	2
Music Education - General	-	11	-	9	-	4
Music Education - Instrumental	-	45	-	54	-	51
Music Education - Vocal	-	14	-	16	-	17
Music Theory	-	9	-	12	-	16
Musical Arts	-	4	-	2	-	1
SUBTOTAL	1	548	1	577	2	560

School of Nursing	-	133	-	153	-	203
--------------------------	---	-----	---	-----	---	-----

TOTAL UNIVERSITY	2,213	2,724	2,300	2,732	2,431	2,832
-------------------------	-------	-------	-------	-------	-------	-------

Source: UR-12 New 10/8/04 (fall '04), 10/14/05 (fall '05) and 10/13/06 (fall '06).

Notes:

Official majors have been declared by the student and approved by the school. Students with double majors and/or double degrees are counted in each major and/or degree.

Figures include full, part and X-time students. X-time indicates students are not registered for course work in the semester. These students are normally enrolled in a 'place-holder' course, which makes them eligible to register for courses at Rochester in a subsequent semester.

UNIVERSITY OF ROCHESTER

Graduate Majors

By School, All Students, Fall Semester (Those with double majors and/or double degrees are counted in each major and/or degree)

	2004-05			2004-05		2005-06			2005-06		2006-07			2006-07	
	Full	Part	X	Masters	Doctoral	Full	Part	X	Masters	Doctoral	Full	Part	X	Masters	Doctoral
THE COLLEGE															
Arts & Sciences															
Biology	33	1	1	1	34	40	-	1	1	40	40	-	1	4	37
Brain & Cognitive Science	30	-	-	-	30	31	-	-	-	31	27	-	1	-	28
Chemistry	80	2	3	3	82	75	1	6	1	81	84	-	6	1	89
Clinical, Social & Developmental Psychology	44	1	4	1	48	49	1	2	1	51	50	-	2	-	52
Computer Science	45	3	1	-	49	43	-	-	1	42	40	-	3	1	42
Earth & Environmental Sciences (Geology)	10	1	1	2	10	11	-	1	1	11	11	-	-	2	9
Economics	73	-	8	-	81	74	-	3	-	77	67	-	5	-	72
English	60	2	4	21	45	69	2	2	23	50	70	1	3	26	48
History	31	4	2	9	28	36	3	2	6	35	35	2	5	11	31
Linguistics	2	-	-	1	1	3	-	-	2	1	2	-	-	2	-
Mathematics (Math/Statistics)	26	-	-	4	22	28	-	-	1	27	26	1	-	-	27
Modern Languages & Cultures, Comp Lit	3	-	-	3	-	2	-	-	2	-	-	-	-	-	-
Philosophy	24	-	1	-	25	24	-	3	-	27	24	1	3	2	26
Physics and Astronomy (Physics)	117	1	2	1	119	106	-	5	1	110	111	-	8	-	119
Political Science	31	-	5	-	36	32	-	1	-	33	32	-	3	-	35
Visual & Cultural Studies	31	-	3	1	33	37	1	3	1	40	35	-	2	-	37
SUBTOTAL	640	15	35	47	643	660	8	29	41	656	654	5	42	49	652

School of Engineering and Applied Sciences															
Biomedical Engineering	37	2	-	7	32	44	1	-	9	36	51	4	1	16	40
Chemical Engineering	47	3	-	17	33	41	3	-	8	36	44	1	-	9	36
Electrical Engineering	82	10	1	23	70	81	8	2	21	70	110	6	7	40	83
Electrical and Computer Engineering	3	-	-	3	-	4	-	-	4	-	15	-	-	15	-
Materials Science	15	3	-	2	16	20	4	-	2	22	22	3	1	2	24
Mechanical Engineering	23	6	-	6	23	21	7	-	8	20	25	6	-	7	24
Optics	73	6	3	13	69	88	4	4	20	76	86	4	5	14	81
SUBTOTAL	280	30	4	71	243	299	27	6	72	260	353	24	14	103	288

THE COLLEGE SUBTOTAL	920	45	39	118	886	959	35	35	113	916	1,007	29	56	152	940
-----------------------------	------------	-----------	-----------	------------	------------	------------	-----------	-----------	------------	------------	--------------	-----------	-----------	------------	------------

	2004-05			2004-05		2005-06			2005-06		2006-07			2006-07	
	Full	Part	X	Masters	Doctoral	Full	Part	X	Masters	Doctoral	Full	Part	X	Masters	Doctoral
Simon Graduate School of Business Administration															
Business Administration	413	123	4	485	55	337	160	4	450	51	379	212	1	560	32
Business Admin. - Executive Development	54	-	-	54	-	79	-	-	79	-	62	-	-	62	-
Business Admin. - Bern, Switzerland	32	-	-	32	-	35	-	-	35	-	27	-	-	27	-
Business Admin. - Nijenrode, Netherlands	4	-	-	4	-	-	-	-	-	-	-	-	-	-	-
SUBTOTAL	503	123	4	575	55	451	160	4	564	51	468	212	1	649	32

UNIVERSITY OF ROCHESTER

Graduate Majors

By School, All Students, Fall Semester (Those with double majors and/or double degrees are counted in each major and/or degree)

Warner Graduate School of Education and Human Development

	2004-05			2004-05		2005-06			2005-06		2006-07			2006-07	
	Full	Part	X	Masters		Full	Part	X	Masters		Full	Part	X	Masters	
Master's Programs															
Counseling (MS)	37	33	1	71		28	28	2	58		20	39	3	62	
Education (MS)	28	40	5	73		34	61	2	97		30	53	3	86	
Higher Education (MS)	1	19	1	21		2	22	1	25		6	19	1	26	
Human Develop (MS)	1	5	-	6		4	9	-	13		4	4	2	10	
School Administration (MS)	-	16	1	17		-	34	1	35		1	33	2	36	
Subject Area (MAT)	3	1	-	4		9	-	-	9		2	2	-	4	
Teaching and Curriculum (MS)	-	7	1	8		-	-	1	1		-	-	1	1	
MASTER'S SUBTOTAL	70	121	9	200		77	154	7	238		63	150	12	225	

	2004-05			2004-05		2005-06			2005-06		2006-07			2006-07	
	Full	Part	X		Doctoral	Full	Part	X		Doctoral	Full	Part	X		Doctoral
Doctoral Programs															
Education (PhD)	30	30	11		71	37	35	12		84	40	39	13		92
Education (EdD)	16	66	26		108	15	89	25		129	20	123	11		154
DOCTORAL SUBTOTAL	46	96	37		179	52	124	37		213	60	162	24		246

	2004-05			2004-05		2005-06			2005-06		2006-07			2006-07	
	Full	Part	X	Masters	Doctoral	Full	Part	X	Masters	Doctoral	Full	Part	X	Masters	Doctoral
SUBTOTAL	116	217	46	200	179	129	278	44	238	213	123	312	36	225	246

	2004-05			2004-05		2005-06			2005-06		2006-07			2006-07	
	Full	Part	X	Masters	Doctoral	Full	Part	X	Masters	Doctoral	Full	Part	X	Masters	Doctoral
Eastman School of Music															
Accompanying	13	-	1	3	11	12	-	-	2	10	13	-	1	6	8
Composition	15	-	1	6	10	21	-	-	11	10	18	3	-	10	11
Conducting (Choral/Orchestral/Wind Ensemble)	6	-	-	2	4	11	-	1	7	5	12	-	2	8	6
Early Music History	-	-	-	-	-	4	-	-	3	1	3	-	-	-	3
Ethnomusicology	-	-	-	-	-	-	-	-	-	-	3	1	-	4	-
Jazz Studies&Contemp Media	14	1	1	8	8	13	2	1	8	8	15	2	2	7	12
Jazz Studies&Contemp Media-Writing	-	-	-	-	-	-	-	-	-	-	1	-	-	1	-
Music Education - Graduate & Summers Only	19	11	5	23	12	18	22	12	40	12	20	22	13	42	13
Music Theory	29	-	3	2	30	26	4	1	-	31	22	5	2	-	29
Musiology	14	1	6	1	20	16	4	2	-	22	16	3	2	-	21
Opera & Opera Stage Directing	2	-	-	2	-	3	-	-	3	-	3	-	-	3	-
Performance & Literature	250	20	25	161	134	244	21	15	145	135	236	13	21	130	140
Theory Pedagogy	5	1	-	5	1	10	1	-	10	1	10	-	-	8	2
SUBTOTAL	367	34	42	213	230	378	54	32	229	235	372	49	43	219	245

UNIVERSITY OF ROCHESTER

Graduate Majors

By School, All Students, Fall Semester (Those with double majors and/or double degrees are counted in each major and/or degree)

	2004-05			2004-05		2005-06			2005-06		2006-07			2006-07	
	Full	Part	X	Masters	Doctoral	Full	Part	X	Masters	Doctoral	Full	Part	X	Masters	Doctoral
School of Medicine & Dentistry															
<i>Notes: Figures do not include M.D. student enrollments. First-year Ph.D. student clusters are reported in the program name.</i>															
Anatomy & Neurobiology/Anatomy	3	-	-	-	3	8	-	-	2	6	15	-	-	3	12
Biochem Molecular Bio & Genetics	18	-	-	-	18	30	-	-	-	30	7	-	-	-	7
Biochemistry	42	-	-	-	42	39	-	-	-	39	57	-	-	1	56
Biophysics	22	-	-	-	22	18	-	-	-	18	19	-	-	-	19
Cardiovascular Sciences	-	-	-	-	-	2	-	-	-	2	2	-	-	-	2
Cellular & Molecular Basis of Disease	16	-	-	-	16	19	-	-	-	19	3	-	-	-	3
Dental Science	2	1	-	3	-	2	-	-	2	-	-	-	1	1	-
Epidemiology	7	-	-	1	6	12	-	-	1	11	13	-	-	-	13
Genetics	14	-	-	-	14	17	-	-	-	17	31	-	1	-	32
Genetics Genomics & Dev	12	-	-	-	12	15	-	-	-	15	7	-	-	-	7
Health Services Research & Policy	14	1	2	-	17	15	-	1	-	16	18	-	-	-	18
Immunology Microbiol & Vacc Biol	27	-	-	-	27	26	-	-	1	25	17	-	-	-	17
Microbiology & Immunology	58	12	1	10	55	66	9	2	19	58	74	11	2	17	70
Molecular Biophy & Structural Biochem	7	-	-	-	7	9	-	-	-	9	5	-	-	-	5
Marriage & Family Therapy	20	12	-	32	-	21	10	-	31	-	24	7	1	32	-
Neuroscience	45	-	-	-	45	41	-	-	-	41	41	-	1	-	42
Pathology	30	1	-	1	30	28	1	1	1	29	36	-	-	-	36
Pathways of Human Disease	5	-	-	-	5	12	-	-	-	12	8	-	-	-	8
Pharmacology	29	1	-	1	29	29	2	-	2	29	41	1	1	1	42
Public Health	6	23	9	38	6	12	22	7	41	-	13	23	2	38	-
Public Health Clinical Investigation	13	36	19	65	3	12	36	19	62	5	12	39	15	62	4
Statistics & Medical Statistics	12	-	-	-	12	14	2	-	4	12	16	3	1	4	16
Toxicology	34	-	1	-	35	33	-	-	-	33	34	-	-	-	34
SUBTOTAL	436	87	32	151	404	480	82	30	166	426	493	84	25	159	443

	2004-05			2004-05		2005-06			2005-06		2006-07			2006-07	
	Full	Part	X	Masters	Doctoral	Full	Part	X	Masters	Doctoral	Full	Part	X	Masters	Doctoral
School of Nursing															
Acute Critical Care	1	4	-	5	-	2	7	-	9	-	2	4	-	6	-
Acute Care Cardiovascular	-	3	1	4	-	-	1	-	1	-	1	2	1	4	-
Acute Care Cardiopulmonary	-	1	-	1	-	-	1	-	1	-	-	-	-	-	-
Adult Nurse Practitioner	1	26	4	31	-	2	22	3	27	-	4	22	2	28	-
Care of Children & Families	5	13	3	20	1	2	17	3	21	1	4	21	5	30	-
Child/Adolsecent Psych	-	-	-	-	-	-	-	-	-	-	1	5	-	6	-
Clinical Nurse Leader	-	-	-	-	-	-	-	-	-	-	-	3	-	3	-
Family Health Nurse Practitioner	6	28	2	36	-	6	27	2	35	-	8	24	3	35	-
Gerontological Nurse Practitioner	-	3	-	3	-	-	2	1	3	-	-	1	-	1	-
Health Practice Research	-	-	-	-	-	-	-	-	-	-	20	7	10	1	36
Leadership in Health Care Systems	-	22	1	23	-	-	17	1	18	-	1	28	3	30	2
Neonatal Nurse Practitioner	-	-	-	-	-	-	9	-	9	-	-	1	-	1	-
Nursing	22	8	6	1	35	22	12	4	-	38	-	-	1	-	1
Pediatric Nurses Prac/Psych Mental Health	4	2	2	8	-	3	1	-	4	-	-	-	1	1	-
Psych Mental Health	2	6	2	10	-	1	11	-	12	-	2	10	2	14	-
SUBTOTAL	41	116	21	142	36	38	127	14	140	39	43	128	28	160	39

	2004-05			2004-05		2005-06			2005-06		2006-07			2006-07	
	Full	Part	X	Masters	Doctoral	Full	Part	X	Masters	Doctoral	Full	Part	X	Masters	Doctoral
UNIVERSITY TOTALS	2,383	622	184	1,399	1,790	2,433	736	159	1,450	1,878	2,506	814	189	1,564	1,945

Source: UR-12 New 10/8/04 (fall '04), 10/14/05 (fall '05) and 10/13/06 (fall '06). Fall 2005 Simon School figures adjusted as of 11/1/05.

Notes:

Figures include full, part and X-time students. X-time indicates students are not registered for course work in the semester. These students are normally enrolled in a 'place-holder' course, which makes them eligible to register for courses at Rochester in a subsequent semester.

UNIVERSITY OF ROCHESTER

Course Credit Hours & Enrollments by School and Subject Area

Reported for Undergraduate & Graduate Students

Arts & Sciences	NUMBER OF CREDIT HOURS						NO. OF COURSE ENROLLMENTS					
	Fall 2004		Fall 2005		Fall 2006		Fall 2004		Fall 2005		Fall 2006	
	UG	Grad	UG	Grad	UG	Grad	UG	Grad	UG	Grad	UG	Grad
African-American Studies	24	-	16	-	76	3	6	1	4	1	19	2
American Sign Language	818	8	850	12	908	4	205	2	213	3	227	1
Anthropology	1,084	9	900	23	1,052	16	275	3	226	6	263	4
Art & Art History	996	193	1,162	184	1,484	164	246	58	291	58	370	49
Art & Art History - Art History	468	193	552	184	788	164	114	58	138	58	196	49
Art & Art History - Studio Arts	528	-	610	-	696	-	132	-	153	-	174	-
Biology	3,911	278	5,182	336	5,418	337	1,162	71	1,519	103	1,625	109
Brain & Cognitive Science	2,860	281	2,965	235	3,427	189	767	78	800	68	998	49
Brain & Cognitive Science	2,426	273	2,518	218	2,962	185	613	74	644	62	832	48
Neuroscience	434	8	447	17	465	4	154	4	156	6	166	1
Chemistry	3,998	738	4,634	558	4,900	661	1,112	193	1,242	185	1,374	212
Clinical & Social Psychology	4,262	388	4,504	393	4,606	368	1,153	130	1,207	117	1,225	116
Clinical & Soc Sciences in Psy	3,325	388	3,545	393	3,652	364	902	130	951	117	965	115
Psychology	937	-	959	-	954	4	251	-	256	-	260	1
Computer Science	1,796	449	1,809	421	1,726	441	463	116	467	100	448	99
Dance	342	-	314	6	330	-	168	-	149	2	154	-
Earth & Environmental Sciences	456	93	496	93	526	64	114	27	124	29	130	23
Economics	3,918	808	3,806	717	3,525	695	979	243	956	217	881	193
English	3,808	589	3,720	652	3,719	754	968	155	940	184	949	204
Film and Media Studies	68	-	40	-	56	-	17	-	10	-	14	-
Health & Society	634	-	183	-	254	-	160	-	46	-	64	-
History	2,812	213	2,671	346	2,158	356	703	68	668	97	539	89
Linguistics	732	13	836	54	668	32	183	3	209	14	167	10
Mathematics	5,604	292	5,972	330	6,339	262	1,385	73	1,482	84	1,573	72
Modern Languages & Cultures	4,418	49	4,184	72	4,376	58	1,086	14	1,030	18	1,089	17
Chinese	232	-	280	6	300	4	45	-	56	1	64	1
Comparative Literature	194	6	208	4	90	4	50	3	54	2	24	2
French	606	-	532	20	620	16	158	-	138	5	161	4
German	508	24	476	20	464	24	127	6	119	5	116	6
Italian	468	4	584	-	560	-	121	1	154	-	146	-
Japanese	708	-	648	10	628	6	159	-	145	2	143	3
Polish	12	-	12	-	30	-	3	-	3	-	8	-
Russian	474	-	296	-	452	-	119	-	74	-	119	-
Spanish	1,216	15	1,148	12	1,232	4	304	4	287	3	308	1
Music	1,377	4	1,726	-	1,713	-	536	1	638	-	646	-
Naval Science	184	-	176	-	112	-	46	-	44	-	28	-
Philosophy	2,116	133	1,964	118	2,272	144	529	44	491	46	568	55
Physics & Astronomy	2,840	799	3,087	777	3,040	794	723	188	784	173	773	203
Astronomy	556	80	520	80	512	60	139	20	130	16	128	15
Physics	2,284	719	2,567	697	2,528	734	584	168	654	157	645	188
Political Science	3,560	298	3,240	295	3,388	318	878	87	805	80	854	84
Religion & Classics	2,444	16	2,531	15	2,841	8	601	4	623	4	699	2
Classical Greek	40	4	85	-	64	-	10	1	18	-	14	-
Classical Studies	328	-	288	-	324	-	82	-	72	-	81	-
Judaic Studies	34	-	18	-	30	-	16	-	8	-	15	-
Religion & Classics - Arabic	240	4	256	-	320	4	60	1	64	-	80	1
Religion & Classics - Hebrew	128	-	156	-	143	4	32	-	39	-	36	1
Religion & Classics - Latin	220	-	190	4	174	-	56	-	50	1	45	-
Religion & Classics - Yiddish	-	4	8	-	-	-	-	1	2	-	-	-
Religion & Classics - Sanskrit	8	-	40	-	16	-	2	-	10	-	4	-
Religion & Classics	1,446	4	1,490	11	1,770	-	343	1	360	3	424	-
Russian Studies	60	-	126	-	-	-	17	-	39	-	-	-
Sociology	416	-	455	-	408	4	104	-	114	-	102	1
Statistics	808	60	688	33	744	31	202	16	172	10	199	9
The College: Arts & Sciences	2,460	2	2,165	3	2,594	5	644	1	611	2	719	3
Wallis Institute of Political Economics	-	30	-	25	-	-	-	7	-	6	-	-
Women's Studies	54	-	164	-	32	-	20	-	47	-	14	-
SUBTOTAL	58,859	5,743	60,565	5,698	62,692	5,708	15,452	1,583	15,951	1,607	16,711	1,606
Study Abroad	792	-	1,072	-	856	-	63	-	73	-	58	-
TOTAL	59,651	5,743	61,637	5,698	63,548	5,708	15,515	1,583	16,024	1,607	16,769	1,606

School of Engineering & Applied Sciences	NUMBER OF CREDIT HOURS						NO. OF COURSE ENROLLMENTS					
	Fall 2004		Fall 2005		Fall 2006		Fall 2004		Fall 2005		Fall 2006	
	UG	Grad	UG	Grad	UG	Grad	UG	Grad	UG	Grad	UG	Grad
Biomedical Engineering	847	189	937	275	1,132	249	257	54	287	69	340	70
Chemical Engineering	469	411	591	337	748	361	121	97	151	88	195	97
Electrical and Computer Engineering	844	746	653	700	594	1,132	225	181	188	182	157	308
Engineering and Applied Science	-	-	36	-	-	-	-	-	9	-	-	-
Materials Science	-	80	-	86	-	78	-	17	-	18	-	22
Mechanical Engineering	1,466	245	1,470	257	1,614	254	376	60	385	75	412	69
Optics	679	665	476	756	486	801	171	178	119	229	122	231
TOTAL	4,305	2,336	4,163	2,411	4,574	2,875	1,150	587	1,139	661	1,226	797

UNIVERSITY OF ROCHESTER

Course Credit Hours & Enrollments by School and Subject Area

Reported for Undergraduate & Graduate Students

Simon Graduate School of Business Administration	NUMBER OF CREDIT HOURS						NO. OF COURSE ENROLLMENTS					
	Fall 2004		Fall 2005		Fall 2006		Fall 2004		Fall 2005		Fall 2006	
	UG	Grad	UG	Grad	UG	Grad	UG	Grad	UG	Grad	UG	Grad
Accounting	352	968	384	677	476	531	98	390	100	271	120	239
Applied Economics	-	123	-	93	-	33	-	41	-	31	-	11
Applied Statistics	44	605	16	284	-	-	22	301	8	142	-	-
Business Environ & Public Policy	-	93	-	117	-	111	-	31	-	39	-	37
Business Law	188	-	176	4	216	-	47	-	44	1	54	-
Competitive & Organizational Strategy	40	766	16	791	4	820	20	322	8	351	2	372
Computer & Information Sys	64	328	32	302	20	392	17	154	8	146	5	178
Exec. Program - Bern, Switzerland	-	324	-	-	-	240	-	108	-	-	-	80
Executive Development	-	464	-	703	-	579	-	120	-	185	-	153
Finance	143	1,263	162	987	195	1,113	39	421	42	329	49	371
General Business Admin	76	139	72	198	106	650	19	75	18	72	28	248
Health Sciences	-	36	-	132	-	270	-	12	-	44	-	90
Management Science Models	-	24	-	15	-	-	-	8	-	5	-	-
Marketing	152	453	200	645	209	543	38	151	50	215	52	181
Operations Management	60	195	52	165	36	243	15	65	13	55	9	81
TOTAL	1,119	5,781	1,110	5,113	1,262	5,525	315	2,199	291	1,886	319	2,041

Eastman School of Music	NUMBER OF CREDIT HOURS						NO. OF COURSE ENROLLMENTS					
	Fall 2004		Fall 2005		Fall 2006		Fall 2004		Fall 2005		Fall 2006	
	UG	Grad	UG	Grad	UG	Grad	UG	Grad	UG	Grad	UG	Grad
Accompanying	53	50	65	47	56	62	43	16	51	19	44	24
Arts Leadership Curriculum	107	161	72	119	59	149	81	115	60	102	54	120
Composition	160	102	123	89	160	106	80	46	64	40	75	39
Conducting	78	73	108	104	110	82	39	32	54	51	55	39
Eastman Initiatives Curriculum	130	-	131	-	125	-	128	-	129	-	125	-
Eastman School of Music	-	-	-	-	-	-	-	89	-	83	-	86
English as a Second Language	-	-	-	-	42	36	-	-	-	-	14	12
Ensemble	908	85	922	91	868	93	548	73	552	72	525	81
Ethnomusicology	-	3	33	12	-	-	-	1	11	4	-	-
Guitar Class	12	2	12	4	14	10	6	1	6	2	7	5
Humanities	1,401	78	1,343	24	1,264	24	490	35	421	19	405	22
Jazz Studies & Contemp Media	248	75	227	56	268	75	171	46	162	34	182	46
Music Education	260	147	392	133	287	150	171	64	229	75	202	82
Music History	561	574	501	564	508	521	186	224	170	218	171	208
Musicology	-	150	15	155	4	159	-	40	4	40	1	43
Opera	74	49	107	42	94	28	30	28	48	26	36	15
Orchestration	2	4	-	20	-	8	1	2	-	10	-	4
Pedagogy	37	46	39	30	47	35	26	25	28	17	35	21
Performance	1	6	-	-	-	-	1	4	-	-	-	-
Sacred Music	-	-	4	13	-	2	-	-	2	8	-	2
Theory	1,441	563	1,420	619	1,410	580	709	218	592	225	605	209
SUBTOTAL	5,472	2,167	5,513	2,121	5,316	2,119	2,710	1,059	2,583	1,045	2,536	1,058
Applied Music	3,257	1,464	3,411	1,394	3,392	1,295	1,205	406	1,275	383	1,291	352
SUBTOTAL	8,729	3,631	8,924	3,515	8,708	3,413	3,915	1,465	3,858	1,428	3,827	1,410
Study Abroad	-	-	-	-	32	-	-	-	-	-	2	-
TOTAL	8,729	3,631	8,924	3,515	8,740	3,413	3,915	1,465	3,858	1,428	3,829	1,410

UNIVERSITY OF ROCHESTER
Course Credit Hours & Enrollments by School and Subject Area
Reported for Undergraduate & Graduate Students

School of Medicine & Dentistry Does not include M.D. students	NUMBER OF CREDIT HOURS						NO. OF COURSE ENROLLMENTS					
	Fall 2004		Fall 2005		Fall 2006		Fall 2004		Fall 2005		Fall 2006	
	UG	Grad	UG	Grad	UG	Grad	UG	Grad	UG	Grad	UG	Grad
Anatomy	-	32	-	112	-	191	-	4	-	17	-	43
Biochemistry	570	692	32	700	20	603	143	139	8	147	5	125
Biophysics	-	239	-	233	-	213	-	50	-	47	-	42
Biostatistics	24	390	52	460	8	466	12	116	23	135	2	131
General Dentistry	-	300	-	492	-	540	-	25	-	41	-	46
Genetics	-	352	-	383	-	490	-	72	-	86	-	102
Interdepartmental	177	764	158	825	231	698	41	174	35	304	50	277
Microbiology	151	1,017	267	937	385	946	39	295	68	286	97	275
Neuroscience	4	606	-	456	4	403	1	124	-	96	1	100
Oral Biology	-	47	-	46	-	23	-	35	-	37	-	23
Orthodontics	-	72	-	132	-	156	-	6	-	11	-	13
Pathology	4	370	-	347	-	369	1	74	-	84	-	81
Pedodontics	-	60	-	144	-	156	-	5	-	12	-	13
Periodontics	-	24	-	168	-	120	-	2	-	14	-	10
Pharmacology & Physiology	4	505	8	519	7	353	1	101	2	103	2	82
Preventive Medicine	11	763	14	797	23	919	3	231	4	243	7	263
Prosthodontics	-	36	-	84	-	96	-	3	-	7	-	8
Psychiatry	-	242	-	264	-	252	-	85	-	101	-	97
Temporomandibular Joint Disorder	-	-	-	84	-	48	-	-	-	7	-	4
Toxicology	-	300	-	352	-	271	-	58	-	61	-	43
TOTAL	945	6,811	531	7,534	678	7,313	241	1,599	140	1,839	164	1,778

Warner Graduate School of Education and Human Development	NUMBER OF CREDIT HOURS						NO. OF COURSE ENROLLMENTS					
	Fall 2004		Fall 2005		Fall 2006		Fall 2004		Fall 2005		Fall 2006	
	UG	Grad	UG	Grad	UG	Grad	UG	Grad	UG	Grad	UG	Grad
Education	26	998	8	1,281	18	1,180	9	421	3	545	6	520
Field Experiences	-	114	-	227	-	220	-	51	-	88	-	85
Higher Education	7	1,249	-	1,172	9	1,415	2	422	-	394	3	475
TOTAL	33	2,361	8	2,680	27	2,815	11	894	3	1,027	9	1,080

School of Nursing	NUMBER OF CREDIT HOURS						NO. OF COURSE ENROLLMENTS					
	Fall 2004		Fall 2005		Fall 2006		Fall 2004		Fall 2005		Fall 2006	
	UG	Grad	UG	Grad	UG	Grad	UG	Grad	UG	Grad	UG	Grad
Leadership in Health Care Systems	-	154	-	108	-	159	-	44	-	31	-	46
Nursing	1,272	923	1,402	924	1,992	1,037	328	247	369	248	511	301
Nursing/Community Center	58	101	421	187	581	95	24	32	138	66	184	39
TOTAL	1,330	1,178	1,823	1,219	2,573	1,291	352	323	507	345	695	386

University Totals	NUMBER OF CREDIT HOURS						NO. OF COURSE ENROLLMENTS					
	Fall 2004		Fall 2005		Fall 2006		Fall 2004		Fall 2005		Fall 2006	
	UG	Grad	UG	Grad	UG	Grad	UG	Grad	UG	Grad	UG	Grad
Fall each academic year	76,112	27,840	78,196	28,169	81,401	28,940	21,499	8,650	21,962	8,793	23,011	9,098

Notes:
 Students registered for leave of absence, including senior year in absentia, have been excluded.
 Eastman Dental Center credit hours are included in SMD.
 Cross-listed registrations are reported in the parent course.
 A minimum number of credit hour totals have been rounded to the nearest whole number.

Source: Student Information System, Institutional Research Report

UNIVERSITY OF ROCHESTER

Distribution of Undergraduate Courses by Section Size

Fall 2006

Arts & Sciences	# Sect.	Avg. Size	1-9	10-19	20-29	30-39	40-49	50-99	100-199	200+
African-American Studies	3	7	3	-	-	-	-	-	-	-
American Sign Language	16	14	2	13	1	-	-	-	-	-
American Sign Language	16	14	2	13	1	-	-	-	-	-
Japanese Sign Language	-	-	-	-	-	-	-	-	-	-
Anthropology	11	24	1	4	3	-	3	-	-	-
Art & Art History	22	16	5	13	2	1	-	1	-	-
Art & Art History - Art History	10	19	4	2	2	1	-	1	-	-
Art & Art History - Studio Arts	12	13	1	11	-	-	-	-	-	-
Biology	23	72	2	5	3	2	3	3	2	3
Brain & Cognitive Science	19	53	-	5	5	1	1	6	-	1
Brain & Cognitive Science	13	64	-	2	3	1	1	5	-	1
Neuroscience	6	28	-	3	2	-	-	1	-	-
Chemistry	9	152	-	-	2	2	1	-	1	3
Clinical & Social Psychology	29		10	8	2	2	-	3	4	-
Clinical & Soc Sciences in Psy	23	39	7	7	2	2	-	2	3	-
Psychology	6	42	3	1	-	-	-	1	1	-
Computer Science	19	26	6	4	4	1	2	1	1	-
Dance	13	12	3	9	1	-	-	-	-	-
Earth & Environmental Sciences	9	14	5	2	-	1	1	-	-	-
Economics	12	74	-	2	-	1	2	5	1	1
English	47	20	8	22	8	6	-	3	-	-
Film & Media Studies	1	10	-	1	-	-	-	-	-	-
Health & Society	3	19	-	1	2	-	-	-	-	-
History	23	24	6	4	4	5	3	1	-	-
Linguistics	6	28	-	2	2	1	-	1	-	-
Mathematics	36	44	2	1	11	4	7	11	-	-
Modern Languages & Cultures	71	16	20	31	15	5	-	-	-	-
Chinese	4	16	-	3	1	-	-	-	-	-
Comparative Literature	1	20	-	-	1	-	-	-	-	-
French	11	15	2	6	3	-	-	-	-	-
German	10	12	3	7	-	-	-	-	-	-
Italian	9	16	4	1	3	1	-	-	-	-
Japanese	10	15	5	3	1	1	-	-	-	-
Polish	1	7	1	-	-	-	-	-	-	-
Russian	9	14	5	2	-	2	-	-	-	-
Spanish	16	20	-	9	6	1	-	-	-	-
Music	32	20	10	10	6	3	1	2	-	-
Naval Science	2	14	-	2	-	-	-	-	-	-
Philosophy	15	39	2	2	3	2	2	4	-	-
Physics & Astronomy	19	40	6	4	2	3	1	-	2	1
Astronomy	3	43	-	2	-	-	-	-	1	-
Physics	16	40	6	2	2	3	1	-	1	1
Political Science	18	46	1	1	4	4	3	3	2	-
Religion & Classics	29	24	6	10	4	3	3	3	-	-
Classical Greek	3	5	3	-	-	-	-	-	-	-
Classical Studies	2	40	-	-	1	-	-	1	-	-
Judaic Studies	1	16	-	1	-	-	-	-	-	-
Religion & Classics - Arabic	4	21	1	1	-	2	-	-	-	-
Religion & Classics - Hebrew	2	20	-	1	1	-	-	-	-	-
Religion & Classics - Latin	3	14	1	2	-	-	-	-	-	-
Religion & Classics - Yiddish	-	-	-	-	-	-	-	-	-	-
Religion & Classics - Sanskrit	1	4	1	-	-	-	-	-	-	-
Religion & Classics	13	32	-	5	2	1	3	2	-	-
Russian Studies	-	-	-	-	-	-	-	-	-	-
Sociology	4	26	1	-	2	-	-	1	-	-
Statistics	7	30	-	5	-	-	-	2	-	-
The College: Arts & Sciences	61	12	17	42	1	1	-	-	-	-
Women's Studies	1	12	-	1	-	-	-	-	-	-
TOTAL	560	30	116	204	87	48	33	50	13	9

UNIVERSITY OF ROCHESTER

Distribution of Undergraduate Courses by Section Size

Fall 2006

School of Engineering and Applied Sciences	#	Avg.								
	Sect.	Size	1-9	10-19	20-29	30-39	40-49	50-99	100-199	200+
Biomedical Engineering	7	49	-	1	-	2	1	1	1	-
Chemical Engineering	10	23	-	6	1	-	3	-	-	-
Electrical & Computer Engineering	13	22	1	5	5	1	1	-	-	-
Engineering and Applied Science	-	-	-	-	-	-	-	-	-	-
Mechanical Engineering	13	33	1	2	3	2	3	2	-	-
Optics	8	17	1	4	3	-	-	-	-	-
TOTAL	51	28	3	18	12	5	8	3	1	-

Simon Graduate School of Business Administration	#	Avg.								
	Sect.	Size	1-9	10-19	20-29	30-39	40-49	50-99	100-199	200+
Accounting	2	59	-	-	-	-	1	1	-	-
Business Law	2	26	-	-	2	-	-	-	-	-
Computers & Information Systems	1	6	1	-	-	-	-	-	-	-
Finance	1	46	-	-	-	-	1	-	-	-
General Business Admin	1	13	-	1	-	-	-	-	-	-
Marketing	2	24	-	1	-	1	-	-	-	-
Operations Management	1	9	1	-	-	-	-	-	-	-
TOTAL	10	29	2	2	2	1	2	1	-	-

UNIVERSITY OF ROCHESTER
Distribution of Undergraduate Courses by Section Size
Fall 2006

Eastman School of Music		# Sect.	Avg. Size	1-9	10-19	20-29	30-39	40-49	50-99	100-199	200+
Accompanying	4	14	2	1	-	1	-	-	-	-	-
Arts Leadership Curriculum	15	11	4	9	2	-	-	-	-	-	-
Composition	10	8	7	3	-	-	-	-	-	-	-
Conducting	5	15	3	1	-	1	-	-	-	-	-
Eastman Initiatives Curriculum	1	125	-	-	-	-	-	-	-	1	-
Eastman School of Music	2	10	1	1	-	-	-	-	-	-	-
English as a Second Language	4	7	3	1	-	-	-	-	-	-	-
Ensembles	20	28	8	5	3	1	1	-	-	2	-
Guitar Class	2	4	2	-	-	-	-	-	-	-	-
Humanities	38	11	15	18	5	-	-	-	-	-	-
Anthropology and Religion	1	18	-	1	-	-	-	-	-	-	-
Art History	2	21	-	-	2	-	-	-	-	-	-
English	2	16	-	1	1	-	-	-	-	-	-
French	6	7	4	2	-	-	-	-	-	-	-
Freshman Writing Seminar	10	12	3	7	-	-	-	-	-	-	-
German	7	9	4	2	1	-	-	-	-	-	-
History	1	10	-	1	-	-	-	-	-	-	-
Humanities	2	12	1	1	-	-	-	-	-	-	-
Italian	5	8	3	1	1	-	-	-	-	-	-
Philosophy	1	16	-	1	-	-	-	-	-	-	-
Psychology	1	18	-	1	-	-	-	-	-	-	-
Jazz Studies & Contemp Media	27	8	18	7	2	-	-	-	-	-	-
Music Education	41	5	35	6	-	-	-	-	-	-	-
Music History	8	25	1	4	1	-	1	1	-	-	-
Opera	4	10	2	1	1	-	-	-	-	-	-
Pedagogy	3	12	1	1	1	-	-	-	-	-	-
Theory	29	22	2	18	2	3	2	2	-	-	-
SUBTOTAL	213	14	104	76	17	6	4	3	3	-	-
Applied Music	189	7	139	46	1	2	1	-	-	-	-
Bassoon	3	6	2	1	-	-	-	-	-	-	-
Chamber Music	14	17	4	6	1	2	1	-	-	-	-
Clarinet	5	7	3	2	-	-	-	-	-	-	-
Double Bass	2	8	1	1	-	-	-	-	-	-	-
Euphonium	1	7	1	-	-	-	-	-	-	-	-
Flute	4	9	2	2	-	-	-	-	-	-	-
Guitar	2	7	1	1	-	-	-	-	-	-	-
Harp	2	6	1	1	-	-	-	-	-	-	-
Harpsichord	3	3	3	-	-	-	-	-	-	-	-
Horn	3	7	2	1	-	-	-	-	-	-	-
Jazz Lessons	13	4	13	-	-	-	-	-	-	-	-
Keyboard	6	8	4	2	-	-	-	-	-	-	-
Lute	1	1	1	-	-	-	-	-	-	-	-
Oboe	2	9	1	1	-	-	-	-	-	-	-
Organ	6	3	6	-	-	-	-	-	-	-	-
Percussion	2	15	-	2	-	-	-	-	-	-	-
Piano	17	8	10	7	-	-	-	-	-	-	-
Piano Class	36	5	34	2	-	-	-	-	-	-	-
Piccolo	1	9	1	-	-	-	-	-	-	-	-
Saxophone	5	5	4	1	-	-	-	-	-	-	-
Strings	1	2	1	-	-	-	-	-	-	-	-
Trombone	2	10	1	1	-	-	-	-	-	-	-
Trumpet	5	5	4	1	-	-	-	-	-	-	-
Tuba	2	5	2	-	-	-	-	-	-	-	-
Viola	7	5	5	2	-	-	-	-	-	-	-
Violin	14	5	11	3	-	-	-	-	-	-	-
Violoncello	9	3	8	1	-	-	-	-	-	-	-
Voice	21	7	13	8	-	-	-	-	-	-	-
TOTAL	402	10	243	122	18	8	5	3	3	-	-

UNIVERSITY OF ROCHESTER
Distribution of Undergraduate Courses by Section Size
Fall 2006

School of Medicine and Dentistry	#	Avg.								
	Sect.	Size	1-9	10-19	20-29	30-39	40-49	50-99	100-199	200+
Microbiology	2	33	-	-	1	-	1	-	-	-
TOTAL	2	33	-	-	1	-	1	-	-	-

School of Nursing	#	Avg.								
	Sect.	Size	1-9	10-19	20-29	30-39	40-49	50-99	100-199	200+
Nursing	13	34	1	1	6	1	1	2	1	-
Nursing/Community Center	10	18	2	5	2	-	1	-	-	-
TOTAL	23	27	3	6	8	1	2	2	1	-

Notes: Registrar's Student Section Extract includes all registrants who have not withdrawn as of the fourth week of classes; includes auditors; excludes labs and independent study.

All cross-listed registrations are listed in the parent course.

Source: Student Information Files (ISIS), Institutional Research Report

UNIVERSITY OF ROCHESTER
Full-time Tenure-track Faculty*

	1997-98	1998-99	1999-00	2000-01	2001-02	2002-03	2003-04	2004-05	2005-06	2006-07
SCHOOL										
Arts & Sciences	260	261	258	259	258	258	261	260	259	259
Engineering & Applied Sciences	53	51	50	49	53	57	57	60	57	58
The College Subtotal	313	312	308	308	311	315	318	320	316	317
Simon Graduate School of Business	41	40	46	48	46	47	44	41	34	32
Warner Graduate School of Education & Human Development	21	18	17	20	21	21	25	23	24	25
Eastman School of Music	86	81	82	80	82	86	86	89	86	84
School of Medicine & Dentistry	529	532	547	536	542	603	650	731	776	782
School of Nursing	17	17	14	15	16	18	18	19	17	18
University Total	1,007	1,000	1,014	1,007	1,018	1,090	1,141	1,223	1,253	1,258

*Full-time tenure-track faculty: those who are tenured, and those in a track towards tenure.
Sources: Provost's Office, School of Medicine Dean's Office

SCHOOL AND DEPARTMENT

THE COLLEGE

Arts & Sciences

Anthropology	6	6	5
Art & Art History	11	11	11
Biology	16	16	17
Brain and Cognitive Science	17	17	14
Chemistry	19	18	19
Clinical and Social Psychology	15	12	13
Computer Science	14	14	14
Earth and Environmental Sciences	6	6	7
Economics	16	18	14
English	20	19	19
History	15	14	15
Linguistics	3	3	4
Mathematics	17	18	21
Modern Languages & Cultures	15	15	14
Music	4	5	5
Philosophy	9	9	9
Physics and Astronomy	27	26	26
Political Science	19	20	21
Religion & Classics	9	10	9
Sociology	2	2	2
SUBTOTAL	260	259	259

**School of Engineering
and Applied Sciences**

Biomedical Engineering	5	5	5
Chemical Engineering	7	7	8
Electrical & Computer Engineering	18	17	18
Mechanical Engineering	14	13	12
Optics	16	15	15
SUBTOTAL	60	57	58

THE COLLEGE SUBTOTAL

	320	316	317
--	-----	-----	-----

**Simon Graduate School of
Business Administration**

	41	34	32
--	----	----	----

**Warner Graduate School of Education and
Human Development**

	23	24	25
--	----	----	----

Eastman School of Music

Composition	5	5	5
Conducting/Ensemble	4	4	4
Humanities	5	5	6
Jazz and Contemporary Media	4	5	5
Music Education	6	4	3
Musicology	8	8	9
Opera	1	1	1
Organ	2	2	2
Piano	8	8	8
Strings	15	14	15
Theory	11	11	10
Voice	9	8	8
Woodwind, Brass, Percussion	11	11	8
ESM SUBTOTAL	89	86	84

UNIVERSITY OF ROCHESTER
Full-time Tenure-track Faculty

2004-05

2005-06

2006-07

SCHOOL AND DEPARTMENT

School of Medicine and Dentistry*

	Tenured Prof & Assoc Prof	On-track All Eligible Ranks	Tenured Prof & Assoc Prof	On-track All Eligible Ranks	Tenured Prof & Assoc Prof	On-track All Eligible Ranks
Anesthesiology	3	20	4	21	4	23
Biochemistry and Biophysics	19	5	17	3	16	1
Biomedical Engineering	2	2	2	4	2	4
Biomedical Genetics	4	5	4	5	4	5
Biostatistics & Computational Biology	3	12	3	12	3	16
Center for Aging & Developmental Biology	6	5	6	5	5	4
Center for Cardiovascular Research	-	9	1	5	1	6
Center for Musculoskeletal Research	-	-	-	2	1	4
Center for Oral Biology	3	3	4	2	3	2
Center for Pediatric Biomedical Research	-	-	-	2	-	2
Center for Vaccine Biology & Immunology	4	4	4	4	4	3
Community & Preventive Medicine	4	11	4	10	3	14
Dentistry	1	19	1	16	1	16
Dermatology	2	6	2	6	3	6
Emergency Medicine	-	21	-	20	-	24
Environmental Medicine	5	10	5	9	6	9
Family Medicine	1	8	1	12	1	9
Imaging Sciences	4	28	5	29	5	30
Laboratory Animal Medicine	-	2	-	1	-	1
Medicine	25	109	26	120	24	116
Microbiology & Immunology	11	9	12	9	12	8
Neurobiology & Anatomy	10	7	11	7	10	7
Neurology	13	33	13	38	14	38
Neurosurgery	2	6	3	6	2	6
Obstetrics & Gynecology	4	13	5	15	5	17
Ophthalmology	2	8	2	8	2	12
Orthopaedics & Rehabilitation	4	24	4	28	4	21
Otolaryngology	2	5	2	4	2	4
Pathology & Laboratory Medicine	9	20	9	17	13	18
Pediatrics	15	52	15	63	16	56
Pharmacology & Physiology	11	3	14	2	14	3
Psychiatry	6	48	6	50	7	50
Radiation Oncology	4	7	4	8	5	6
Surgery	6	22	5	26	6	28
Urology	3	7	3	10	3	12
Subtotal	188	543	197	579	201	581

Medicine & Dentistry Subtotal

731	776	782
-----	-----	-----

*Faculty excluded from this report: Professors and Associate Professors in Option A or C-T,
 Geographic full-time Faculty and Professional Service Faculty,
 Service Track Faculty, Research Track Faculty

School of Nursing

19	17	18
----	----	----

Clinical faculty (non-tenure track) are not reported on this table.

TOTAL UNIVERSITY

2004-05	2005-06	2006-07
1,223	1,253	1,258

Sources: Provost's Office, School of Medicine and Dentistry Dean's Office

UNIVERSITY OF ROCHESTER
Faculty and Staff in University Divisions*
as of September 30, 2006

UNIVERSITY DIVISIONS	Full- and Part-time Active Employees		
	FT	PT	TOTAL
Central Administration	1,465	106	1,571
The College, Arts and Sciences	818	106	924
School of Engineering/Laser Lab	420	13	433
Simon Grad School of Business	110	3	113
Warner Grad School of Education	55	18	73
Eastman School of Music	215	53	268
School of Medicine & Dentistry	3,486	411	3,897
School of Nursing	99	29	128
Memorial Art Gallery	46	26	72
Strong Memorial Hospital	5,392	1,227	6,619
Vice Provost for Health Affairs	656	73	729
SUBTOTAL	12,762	2,065	14,827

STRONG HEALTH DIVISIONS	Full- and Part-time Active Employees		
	FT	PT	TOTAL
Highland Hospital	1,501	434	1,935
Highlands at Brighton	186	55	241
Visiting Nurse Service	463	230	693
SUBTOTAL	2,150	719	2,869

TOTAL	14,912	2,784	17,696
--------------	---------------	--------------	---------------

*Time-as-reported (TAR) and Casual employees are excluded.

Source: Human Resources