

**UNIVERSITY OF ROCHESTER**  
**Full-time Tenure-track Faculty\***

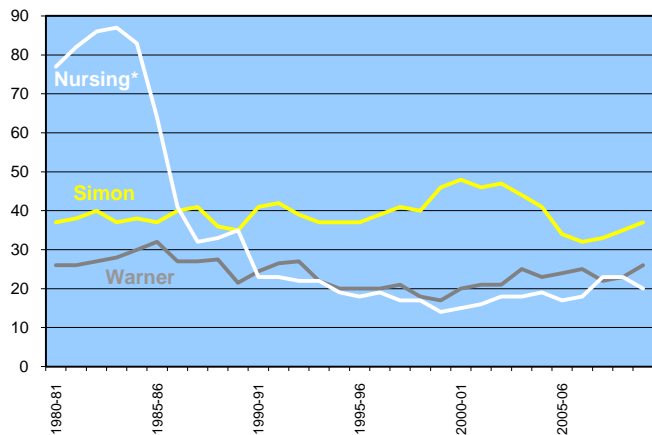
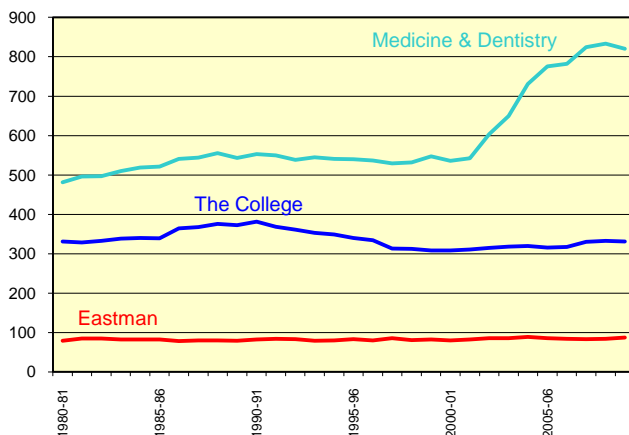
SCHOOL	1980-81	1981-82	1982-83	1983-84	1984-85	1985-86	1986-87	1987-88	1988-89	1989-90
Arts & Sciences	287	286	281	288	291	288	309	306	314.5	311.5
Engineering & Applied Sciences	44	43	52	50	49	51	55	62	61	61
<b>The College</b>	<b>331</b>	<b>329</b>	<b>333</b>	<b>338</b>	<b>340</b>	<b>339</b>	<b>364</b>	<b>368</b>	<b>376</b>	<b>373</b>
Simon Graduate School of Business	37	38	40	37	38	37	40	41	36	35
Warner Graduate School of Education	26	26	27	28	30	32	27	27	27.5	21.5
Eastman School of Music	79	85	85	82	82	82	78	80	80	79
School of Medicine & Dentistry	481	496	497	510	519	521	541	544	555	543
School of Nursing	77	82	86	87	83	64	41	32	33	35
<b>University Total</b>	<b>1,031</b>	<b>1,056</b>	<b>1,068</b>	<b>1,082</b>	<b>1,092</b>	<b>1,075</b>	<b>1,091</b>	<b>1,092</b>	<b>1,107</b>	<b>1,086</b>

	1990-91	1991-92	1992-93	1993-94	1994-95	1995-96	1996-97	1997-98	1998-99	1999-00
Arts & Sciences	320.5	306.5	301	294	291	284	279	260	261	258
Engineering & Applied Sciences	61	62	60	59	58	56	55	53	51	50
<b>The College</b>	<b>382</b>	<b>369</b>	<b>361</b>	<b>353</b>	<b>349</b>	<b>340</b>	<b>334</b>	<b>313</b>	<b>312</b>	<b>308</b>
Simon Graduate School of Business	41	42	39	37	37	37	39	41	40	46
Warner Graduate School of Education	24.5	26.5	27	22	20	20	20	21	18	17
Eastman School of Music	82	84	83	79	80	83	80	86	81	82
School of Medicine & Dentistry	553	550	538	545	541	540	537	529	532	547
School of Nursing	23	23	22	22	19	18	19	17	17	14
<b>University Total</b>	<b>1,105</b>	<b>1,094</b>	<b>1,070</b>	<b>1,058</b>	<b>1,046</b>	<b>1,038</b>	<b>1,029</b>	<b>1,007</b>	<b>1,000</b>	<b>1,014</b>

	2000-01	2001-02	2002-03	2003-04	2004-05	2005-06	2006-07	2007-08	2008-09	2009-10
Arts & Sciences	259	258	258	261	260	259	259	270	273	252
Engineering & Applied Sciences	49	53	57	57	60	57	58	60	60	79
<b>The College</b>	<b>308</b>	<b>311</b>	<b>315</b>	<b>318</b>	<b>320</b>	<b>316</b>	<b>317</b>	<b>330</b>	<b>333</b>	<b>331</b>
Simon Graduate School of Business	48	46	47	44	41	34	32	33	35	37
Warner Graduate School of Education	20	21	21	25	23	24	25	22	23	26
Eastman School of Music	80	82	86	86	89	86	84	83	84	87
School of Medicine & Dentistry	536	542	603	650	731	776	782	824	833	820
School of Nursing	15	16	18	18	19	17	18	23	23	20
<b>University Total</b>	<b>1,007</b>	<b>1,018</b>	<b>1,090</b>	<b>1,141</b>	<b>1,223</b>	<b>1,253</b>	<b>1,258</b>	<b>1,315</b>	<b>1,331</b>	<b>1,321</b>

Computer Science moved into Hajim Engineering School

\*Full-time tenure-track faculty includes faculty who are tenured, and those in track towards tenure. School of Medicine and Dentistry counts are submitted by the academic affairs office for that school.



\*Decrease in Nursing faculty (1984 through 1987) is due to reclassification of faculty into clinical and tenure tracks