

UNIVERSITY OF ROCHESTER
Full-time Tenure-track Faculty*

SCHOOL	1981-82	1982-83	1983-84	1984-85	1985-86	1986-87	1987-88	1988-89	1989-90	1990-91
Arts & Sciences	286	281	288	291	288	309	306	314.5	311.5	320.5
Engineering & Applied Sciences	43	52	50	49	51	55	62	61	61	61
The College	329	333	338	340	339	364	368	376	373	382
Simon Graduate School of Business	38	40	37	38	37	40	41	36	35	41
Warner Graduate School of Education	26	27	28	30	32	27	27	27.5	21.5	24.5
Eastman School of Music	85	85	82	82	82	78	80	80	79	82
School of Medicine & Dentistry	496	497	510	519	521	541	544	555	543	553
School of Nursing	82	86	87	83	64	41	32	33	35	23

University Total **1,056 1,068 1,082 1,092 1,075 1,091 1,092 1,107 1,086 1,105**

	1991-92	1992-93	1993-94	1994-95	1995-96	1996-97	1997-98	1998-99	1999-00	2000-01
Arts & Sciences	306.5	301	294	291	284	279	260	261	258	259
Engineering & Applied Sciences	62	60	59	58	56	55	53	51	50	49
The College	369	361	353	349	340	334	313	312	308	308
Simon Graduate School of Business	42	39	37	37	37	39	41	40	46	48
Warner Graduate School of Education	26.5	27	22	20	20	20	21	18	17	20
Eastman School of Music	84	83	79	80	83	80	86	81	82	80
School of Medicine & Dentistry	550	538	545	541	540	537	529	532	547	536
School of Nursing	23	22	22	19	18	19	17	17	14	15

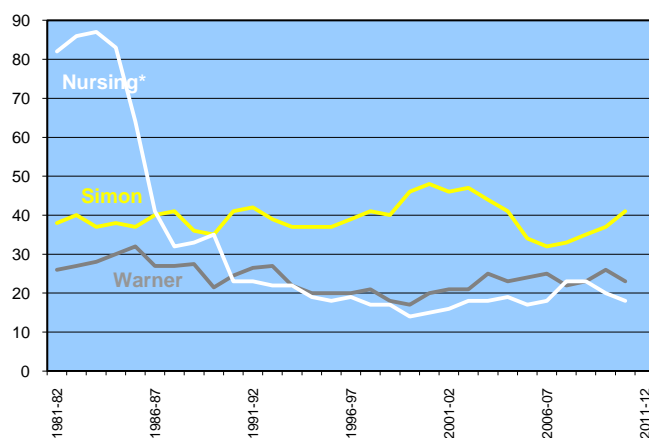
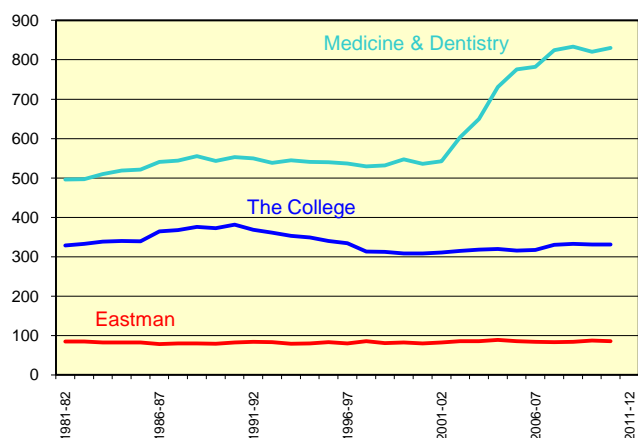
University Total **1,094 1,070 1,058 1,046 1,038 1,029 1,007 1,000 1,014 1,007**

	2001-02	2002-03	2003-04	2004-05	2005-06	2006-07	2007-08	2008-09	2009-10	2010-11
Arts & Sciences	258	258	261	260	259	259	270	273	252	254
Engineering & Applied Sciences	53	57	57	60	57	58	60	60	79	77
The College	311	315	318	320	316	317	330	333	331	331
Simon Graduate School of Business	46	47	44	41	34	32	33	35	37	41
Warner Graduate School of Education	21	21	25	23	24	25	22	23	26	23
Eastman School of Music	82	86	86	89	86	84	83	84	87	86
School of Medicine & Dentistry	542	603	650	731	776	782	824	833	820	830
School of Nursing	16	18	18	19	17	18	23	23	20	18

University Total **1,018 1,090 1,141 1,223 1,253 1,258 1,315 1,331 1,321 1,329**

Computer Science moved into Hajim Engineering School

*Full-time tenure-track faculty includes faculty who are tenured, and those on-track towards tenure. School of Medicine and Dentistry counts are submitted by the academic affairs office for that school.



*Decrease in Nursing faculty (1984 through 1987) is due to reclassification of faculty from tenure track into clinical tracks