



Residential Life & Housing Services

GRADUATE HOUSING LIVING GUIDE



UNIVERSITY *of* **ROCHESTER**



Welcome to the University of Rochester. We are so glad that you've decided to live in one of our graduate and family housing apartments.

This handbook is designed to serve as a resource to you as you acclimate to the community. It certainly is not a catchall, so please never hesitate to contact a University of Rochester or Rochester Management Incorporated (RMI) employee with additional questions.

As you settle in, we encourage you to walk around your residential area, introduce yourself to others, and begin to feel at home.

We look forward to supporting your academic and personal pursuits as well as providing a safe, comfortable, and fun living environment during your time with us.

Meliora,
Graduate and Family Services

What's Inside

Section 1: Staff and Contacts

- Residential Life and Housing Services
- Goler House, University Park, and Whipple Park Area Offices
- Graduate Assistant and Graduate Community Assistants

Section 2: Living in our community

- Rent and late payments
- Maintenance
- Mail and packages
- Garbage and recycling
- Locked out
- Snow removal
- Buy, Sell, Swap, and Barter
- Laundry
- Community room
- Community garden
- Parking in Residential Area
- Parking and Map (on campus)
- Shuttle

Section 3: Create a lovely community

- Roommate and Family registration
- Tobacco policy
- Fire safety
- Extended family stay policy
- Guests
- Pets
- Noise
- Decoration and alteration

Section 4: Resources you may want to know

- Campus Resources
- Living in Rochester
- Public Transportation
- Grocery Shopping
- Where to go in Rochester
- Checklist of Things To Do Before You Leave

Section1: Staff and Contacts

Office of Residential Life and Housing Services

Graduate Housing Operations Manager

Leases, Check-in/out, Transfers, Availability, Waiting Lists

Office: 020 Gates Wing Susan B. Anthony Halls

Phone: (585) 275-5824

Email: uapts@reslife.rochester.edu

Assistant Director Graduate, Family, & Off-Campus Housing

Programs, Special Events, Student Conduct, Resident Concerns

Office: 122 Morgan Wing Susan B. Anthony Halls

Phone: (585) 275-1081

Email: rebecca.orton@rochester.edu

Graduate Assistant

Office: 122 Morgan Wing Susan B. Anthony Halls

Email: gradhousing@rochester.edu

Graduate Community Assistants (GCAs)

The GCAs are all University of Rochester graduate students. They are fantastic resources if you need information from those who have likely been in your shoes at some point. Each GCA designs programs and events for the community in which they live.

Rochester Management Inc.

Goler House Office (RMI)

Phone: (585) 461-9440

office@ghmanagedbyrmi.com

Hours: 8 a.m. - 12:30 p.m. and 1 p.m. – 4:30 p.m.

University Park Office (RMI)

Phone: (585) 271-7604

office@upmanagedbyrmi.com

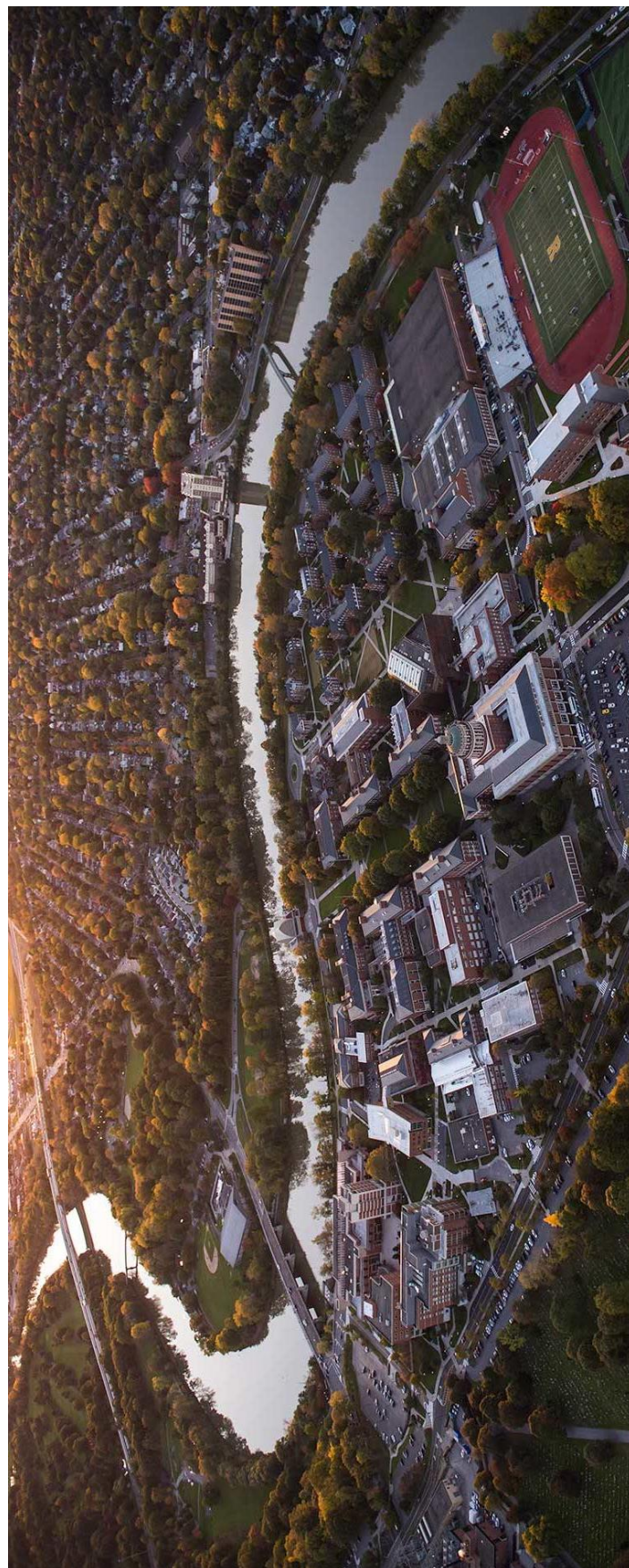
Hours: 8:30 a.m. - noon and 12:30 p.m. - 4 p.m.

Whipple Park Office (RMI)

Phone: (585) 424-4510

office@wpmanagedbyrmi.com

Hours: 8:30 a.m. - noon and 12:30 p.m. - 4 p.m.





Section 2: Living in our community

Rent and Late Payment

Making a Rent Payment

- **Check.** Rent payment must be made in form of a personal check from the Leaseholder, or a Money Order. Ensure the leaseholders name and apartment number are clearly marked on the payment and the check or money order is made payable to:

UNIVERSITY OF ROCHESTER – GOLER

UNIVERSITY OF ROCHESTER – WHIPPLE PARK

UNIVERSITY OF ROCHESTER – UNIVERSITY PARK

RMI is unable to accept cash for rent payments. Please note that the monthly rent statement should accompany all rent payments you make. Always put your apartment number in the “note” section of your check.

- **PayRentChex.** You can also pay your rent or set up monthly auto payment in the PayRentChex following the steps below.

Procedure for Making Payment on Payrentchex

Step1: Step 1: Login to your payrentchex account

Step 2: Go in the view & make payments module at the home page

Step3: Set auto-pay by filling out the payment information

Late Payments

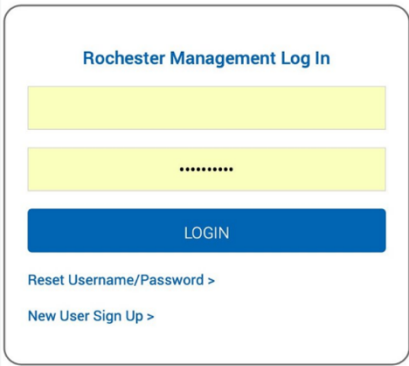
Rent is always due the first day of the month. However, there is a five-business day grace period allowed without penalty for payment. Rent received after the 5th business day will be subject to a late fee of \$5.00 per day.

Request for rent payment extensions without penalty are made through the Goler House Office and are subject to the approvals of the Manager of University Operations. Such requests and approvals must be made prior to the end of the five-day grace period and are only available on a limited basis for “extenuating” circumstances.


Maintenance

- Service requests for maintenance should be made at the office, either in person, by email or by phone. Routine maintenance is completed during the office hours. Maintenance staff members are not permitted to accept requests directly from the residents.
- **After office hours maintenance.** Emergency maintenance is available after office hours by calling the complex office and following the instruction for emergency maintenance.
- **Public Safety services** are available 24 hours per day 585-275-3333.
- **PayRentChex.** You can also submit maintenance request online via the PayRentChex following the steps below.


Procedure for Requesting Maintenance on Payrentchex



Step1: Step 1: Login to your payrentchex account



Step 2: Go in the Maintenance Request module at the home page



Step3: Write down your maintenance request clearly in the message blank and send the message out.

Mail and Package

- Receiving Mail and Packages: Please use the address format below to have mail and packages sent to the correct place.
- Sending Mail and Packages: The Campus Mail Center is in Todd Union on the River Campus. It provides services via USPS, UPS, FedEx, and DHL. The center is open Monday through Friday, from 9 a.m. to 5 p.m. It is also open on Saturdays from 10 a.m. to 2 p.m., except on university holidays. Renting a mailbox: Based on availability, all full-time students can rent a mailbox in the Campus Mail Center. https://www.facilities.rochester.edu/support_ops/mail.php


Whipple Park	Goler House	University Park
First and Last Name Apt#, Street Name Rochester, NY 14623	First and Last Name 60 Crittenden Blvd., Apt# Rochester, NY 14620	First and Last Name Apt#, University Park Rochester, NY 14620

Garbage and Recycling


Residents in each of the three communities are responsible for taking out garbage and recyclables. In Goler House, each floor is equipped with two garbage/recycling rooms. In University Park and Whipple Park, the garbage/recycling dumpsters are spread out throughout the parking lots. Residents should locate and use the dumpsters closest to their units. (See guide below on what and what not to recycle.)

RECYCLE **OFTEN** AND RECYCLE **RIGHT**

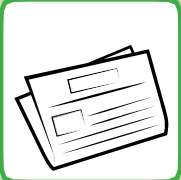
ALWAYS RECYCLE:




Plastic/Glass Bottles and Containers
Plastic/Glass bottles, jars, jugs, and tubs



Food and Beverage Cans
Tin, aluminum, steel food and beverage cans



Paper
Cardboard, paper, newspaper, paperboard, magazines



Flattened Cardboard and Paperboard
Flatten all boxes (do not bundle/tie up)

Go to **RecycleOftenRecycleRight.com** to learn more.

NEVER RECYCLE:

- Food
- Plastic Bags
- Food-Soiled Paper
- Snack Bags and Wrappers
- Cords/Wires
- Garden Hose
- Clothing
- Diapers
- Needles
- Broken Cups and Dishes
- Electronics and Batteries
- Household Hazardous Waste

Locked out

- If you find yourself locked out of your apartment during RMI's business hours (8 a.m.–4 p.m., Monday–Friday) you can simply go to the area office to be let back into your unit.
- If you are locked out outside of business hours, you need to call the Department of Public Safety at (585) 275-3333. You will be charged a \$25 fee for each after-hours lock out.

Snow Removal

If your apartment is equipped with a front stoop, residents are responsible for clearing that area. All sidewalks, walkways, and parking lots are cleared by Rochester Management Inc. staff.

Buy, Sell, Swap, and Barter

It is common to see residents selling or buying furniture from other residents. While this is allowed by RMI and the University, it is not officially facilitated by either organization. Please use care and common sense when engaging in a private transaction with a third party. Also note that mattresses are never allowed to be involved in any transaction. Mattresses should be properly disposed of upon move-out.



Laundry

Like any apartment complex, be respectful of others and watch your usage. The laundry units are in the area office building. These are online-operated machines, you can set up and use the APP (PayRange) to pay, no coin needed. Report any broken machines to the Area office.

Laundry Room Etiquette



Be courteous. Please don't monopolize the machines. Use a timer to ensure you remove your laundry at cycle end so that your neighbors don't have to wait around.



Be considerate. If you notice that a washer or dryer has completed its cycle and the owner hasn't returned to deal with it, try to be patient. They'll probably be back shortly.



Be prepared. Save time and sort your clothing in your apartment. Don't forget to check your pockets for loose change or anything else that shouldn't go in the wash.



Be clean. A communal laundry room is a shared space, so it's up to every resident to keep it tidy. Wipe up any spilled detergent, clean out the lint trap, and throw away used dryer sheets.

Community Room

Each graduate housing complex location has a community room. This space is available to all residents upon reservation and is often used by our Graduate Community Assistant (GCA) staff to host meetings and indoor events. Goler Community Room is located on the ground floor on the even side of the building. University Park Community Room is in the Apt. 507 and Whipple Park Community Room is in the basement of Apt. 231 Quinby RD.

Community Garden

If you are interested in registering for a plot in the Community Garden, located at Whipple Park, contact the Graduate Housing Graduate Assistant at gradhousing@rochester.edu for more information. You must be a leaseholder to register for a plot. These spaces are for gardening only and not storage spaces.

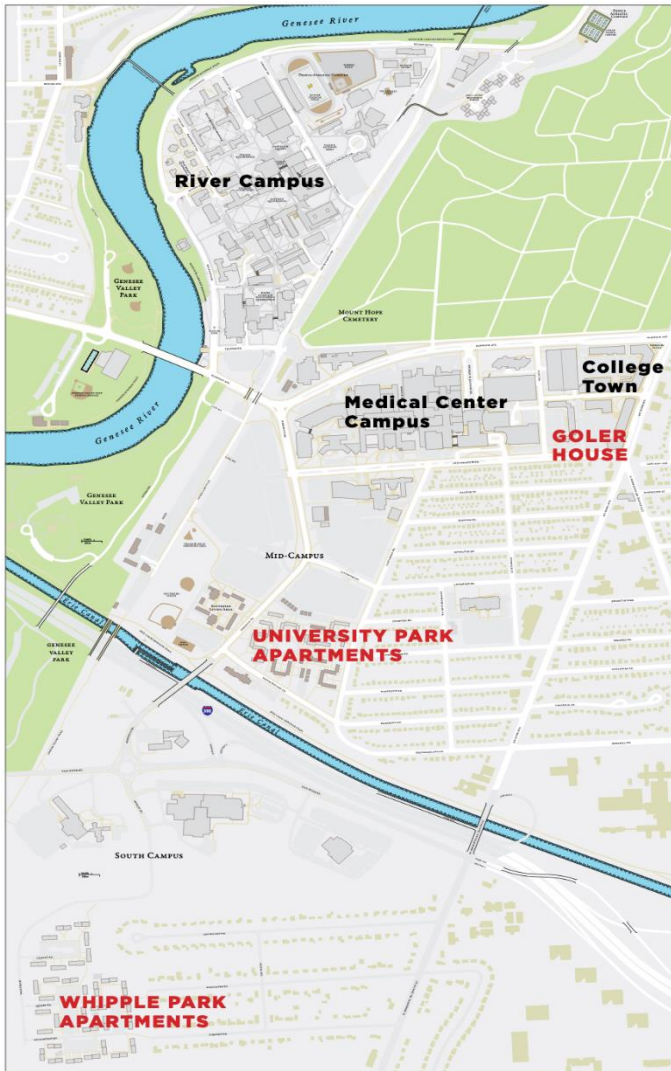


Parking in Residential Area

All vehicles must hold parking permits and pay the appropriate fees. Residents should bring your vehicle registration to the office (UR parking office located in the Goler House) to obtain their parking permits. Visit <https://www.rochester.edu/parking/> for more information.

You must also utilize roads and parking lots for deliveries and moving in - **do not drive on the grass.**

Each Complex area will have assigned parking for guests.



Parking and Map (on campus)

Parking services vary depending on which residential community you reside in. For information regarding permanent and temporary parking passes, contact the Department of Parking and Transportation Management.

Department of Parking and Transportation Management

70 Goler House, Box 270348, Rochester, NY 14627

Phone: (585) 275-4524

Email: parking@rochester.edu

Parking Management Center

Office Hours: Monday through Friday–8:00a.m. until 4:30 p.m.

[Open by appointment only](#)

Parking is available free for up to 30 minutes in the hospital garage or up to two hours in the College Town surface lots and retail side of College Town garage while visiting the Parking Management Center.

Hospital Garage Visitor Parking Office Hours

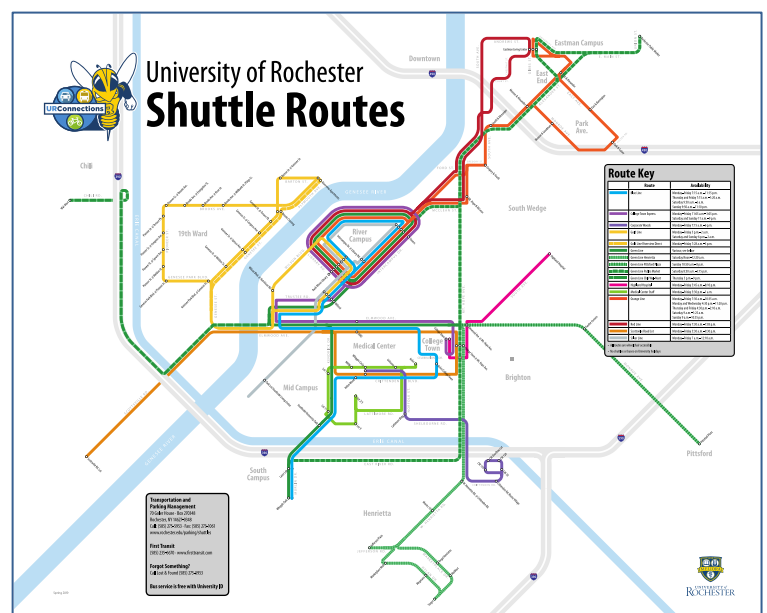
Monday through Friday – 6:00 am until 11:00 pm

Weekends – 2:30 pm until 11:00 pm

Shuttle

Get connected in, around, and between campuses when you get a ride on the University's shuttle fleet. Convenience and gas savings abound with the eleven shuttle lines available to get you between graduate housing and UR/URMC destinations.

University shuttles are outfitted with real-time tracking equipment. Simply go to the [TransLoc site](#) on your computer or smartphone, or download the [free smartphone app](#) to see the buses on a map. Live tracking, arrival predictions, real-time capacity, and proximity alerts are also available for all University bus lines. For updated schedules, please visit <https://www.rochester.edu/parking/shuttles/>.





Section 3: Create a lovely community

Roommate and Family Registration

Leaseholders in two- and three-bedroom apartments must identify and register family members or roommates. An identified roommate (IRM) must be a qualified graduate housing applicant. Leaseholders must identify, register, and confirm the eligibility of an IRM before the IRM takes occupancy of an apartment.

In the event a registered IRM leaves, the leaseholder, although not required to have a roommate, may choose to find one. Leaseholders must register new qualified roommates as soon as possible with the appropriate complex office.

Reminder: Roommates must be University of Rochester students.

Fire Safety

Do not cover smoke detectors. Use surge protected power strips. Candles, incense, or other open flamed items are not allowed in your apartment. Many residents set off the alarms due to unattended meals and burning food. Cooking activities are leading cause of fires and fire alarms in residential housing. Fire alarms caused by cooking late at night, during the winter months, and early mornings are not appreciated (especially by neighbors with small children). If you are new to cooking or are unfamiliar with the sensitive fire equipment, then read right for some helpful tips.

Tobacco Free

Smoking is prohibited in all graduate housing facilities. The University of Rochester is a smoke-free/tobacco-free campus. This includes but is not limited to the use of hookahs and e-cigarettes. A resident who violates the smoking policy could be subject to lease termination.

Fire Safety Tips

- Never leave cooking activities unattended.
- Keep cooking areas clean and free of grease and oil splatter.
- Make sure the fire extinguisher in the area is appropriate for kitchen fires.
- Never use the fire extinguisher on a grease fire.
- To learn more about Fire Safety- www.safety.rochester.edu/homepages/fsu_homepage.html

Extended Family Stay Policy

Full-time graduate students **with children** have the option of bringing their parents to stay with them for extended periods (up to six months) to care for their children. This is reserved for the parents of the leaseholder only in two- or three-bedroom apartments (due to occupancy restriction and fire code). Two- or three-bedroom apartments may have no more than four adults at one time (1 leaseholder + 1 spouse or partner + 2 visitors). Registration is required for all visits greater than two weeks up to six months.

Guest Policy

A guest is limited to a two-week stay once every six-month period. Guests do not need to be registered. Please note that while on campus, guests are the responsibility of the leaseholder.

Pet Policy

Only small animals, confined to a cage or aquarium, are permitted. Any animal that poses a sanitation issue or safety hazard is not permitted. Dogs and cats are expressly prohibited. Residents in violation of this policy will be given one month to correct the violation. The University will perform an unannounced inspection. If the resident is still in violation or there are subsequent violations, the resident will be served notice of forfeiture of security deposit and termination of the lease.

Service Animals and Emotional Support Animals

Specially trained service animals for individuals with disabilities are permitted. Please note on your application that you are bringing a trained animal. Emotional support animals require approval from the University. Please contact rochester.edu/disability/guidelines-for-accommodation-requests-housing-dining.html.



Noise Policy

Our expectation is that residents and guests observe quieter hours between 10 p.m. and 8 a.m. daily. If a neighbor approaches you with a reasonable request to keep the noise down at any time (24 hours a day, 7 days a week), we expect you to respect the “courtesy policy” always in effect: that is, you respond to their request in a courteous and considerate manner.

Decoration and Alterations

Please note that residents are NOT permitted to make any semi-permanent or permanent alterations to the apartment without written permission from Rochester Management Inc. This includes wallpaper, paint, permanent fixtures, mounting large brackets and items into walls, etc.

Air Conditioners

Air conditioners will be assessed an annual fee of \$100–\$150 while installed in any University apartment regardless of the level of usage. This does not apply to Whipple Park town houses, where residents pay for their own electric charges. All installations must be inspected and approved by the maintenance superintendent.

Section 4: Resources you may want to know

Campus Resources

- **Public Safety**

Emergency: (585)275-3333 (call or text) available 24 hours a day, 7 days a week

Administrative and Patrol Staff Headquarters: (585) 275-3340

Medical Center Public Safety Office: (585) 275-2221

Lost and Found: (585) 275-2552

Email: publicsafety@rochester.edu

- **Customer Service Center/ I.D. Office**

Address: the 1st floor of Susan B. Anthony Halls

Office Hour: Monday – Friday, 10:00 am – 4:00 pm

Phone: (585) 275-3975

Service provided: ID cards, Dining plan enrollment/ modification, Uros account deposits, OneCard inquiries.

Occasional card loss or damage is inevitable. If you lose your ID card, call the ID Office at (585) 275-3975 immediately to have it deactivated. You are also encouraged to contact University Public Safety at (585) 275-3333 to report the incident and request to have your account suspended. There is a \$25.00 charge to replace lost cards.

Renew your ID card before the expired date, there is no fee charged.

- **Office of the Bursar**

Address: 330 Meliora hall

Office hours: phone lines are open 9:00 a.m.–11:30 a.m. and 1:00 p.m.–4:00 p.m.; our Information Window will be open Monday thru Friday from 9:00 a.m. to 4:30 p.m., except on Wednesdays when the Information Window opens at 9:30 a.m.

Phone: (585) 275-3931

Email: bursar@admin.rochester.edu (Please provide your student's name and ID number in your email message. Email messages are checked regularly during normal business hours.)

Services provided: Billing, Tuition payments, Wire transfers.

- **Campus Mail Center**

Address: Lower Lever Todd Union Hall

Office Hours: Monday through Friday 9 a.m. – 5 p.m. and

Saturday 10 a.m. – 2 p.m., except on university holidays. There are no Saturday hours during the winter and spring breaks and the summer session.

Phone: (585)275-7495

- **International Services Office**

Address: 40 Celebration Drive, Suite 1.100

ISO Service Schedule: <http://iso.rochester.edu/contact.html>

Phone: (585) 275-2866

Email: questions@iso.rochester.edu

Services Provided: Issuing immigration documents, Advising on relevant immigration matters, Meeting US reporting requirements, Offering information on adjusting to life and culture in the US and at Rochester.

- **University Health Service (UHS)**

Phone: (585)275-2662

River Campus Office

Address: 1st Floor, UHS Building, 738 Library Road, next to the Susan B. Anthony Hall

Office Hours: Weekday Hours: 8:00am-5:00pm Monday – Friday, Weekend Hours: 9:00am-5:00pm on Saturdays, closed on Sundays.

Medical Center Office

Address: Room 1-5077, UR Medical Center

Office Hours: Weekday Hours: The office will be open 8:00am-4:30pm, Monday – Friday Weekend Hours: The office will be closed on weekends.

- **University Counseling Center (UCC)**

Phone: (585) 275-3113 (24/7)

- **Environmental Health & Safety**

Pest Control

If you are experiencing an issue with pests (bats, bees, rodents, etc.), contact Environmental Health and Safety at (585) 275-3241.



Living in Rochester

The city of Rochester is situated on the southern shore of Lake Ontario. It is part of New York's breathtaking Finger Lakes region. Known for its vast selection of family-oriented activities and attractions, Rochester hosts nearly two million visitors each year. It is the third-largest city in New York State, and a little more than one million people live in the Rochester metropolitan area. In 2010, *USA Today* named Rochester one of the top-ten college towns among mid-sized metropolitan areas.

Rochester is home to two national historic landmarks open to the public, the National Susan B. Anthony Museum and House and the George Eastman Museum. Adults and children are entertained in one of the largest children's museums in the US at the National Museum of Play at the Strong, also home to the National Toy Hall of Fame.

Public transportation

- **Greater Rochester International Airport** (www.monroecounty.gov/airport-information.php)
- **Amtrak Train Service** (www.amtrak.com/home.html)
- **Regional Transit Service** (www.myrts.com) You can pay for your trips using RTS Go on your mobile phone. RTS Go caps the amount you spend to a maximum of \$3 per day (\$1.50 for reduced fares) and \$56 per month (\$28 for reduced fares). The more you ride with RTS Go, the more you'll save. Visit <https://myrts.com/RTS-Go> to learn more.

1

transit

RTS Go: mobile

Download the **Transit** app from the App Store or Google Play. Open the app, look for the RTS Go logo, then create an account and add funds. When you're ready to ride, select the RTS Go logo to bring up the barcode, then tap it on the RTS Go validator near the bus' farebox. You're all set!

Tap your
phone here

Grocery Stores

- **Wegmans**

Wegmans is a very popular and well-known grocery store. For our residents, you can take the school shuttle, **Green Line on Saturday**, to get there. You will enjoy shopping there for its fresh vegetable, fruit, and daily products.

- **Trade Joes**

Trader Joe's is well-known for its worldwide snacks, seasonal-limited product, and plentiful choices. You will regret if you didn't have a try. Residents can ride the **Green Line on Sunday** to get there.

- **CVS**

Located in College Town, CVS is a very convenient place to buy some urgent need product, in particularly, medications. Also, you can get flu shot, covid test and vaccine there.

- **Dollar Tree**

Located in College Town, Dollar Tree sells many kinds of daily products at very low price, usually 1\$. Disposable tableware, bowls and dishes, kitchen supplies, stationery and gift card are worth a try!

- **Costco**

Members-only warehouse selling a huge variety of items including bulk groceries, electronics & more. You can take the public bus, **RTS line17 & 41**, at college town to get there.

- **City of Rochester Public Market**

Rochester's City-run Public Market (**280 North Union Street**) is **open Tuesday, Thursday, and Saturday**, year-round. It offers local produce; produce from around the country and world.

- **Abundance Food Co-Op:**

571 South Ave., (585) 454-2667, www.abundance.coop/

- **African Caribbean Market:**

1415 N. Clinton Ave., (585) 266-8610

- **Aldi:**

615 Jefferson Rd., (585) 955-2534, www.aldi.us

- **Asian Food Market:**

1885 Brighton Henrietta Townline Rd., (585) 292-9888, www.asiafoodmarket.net

- **Brighton Farmers' Market: s**

- 1150 Winton Rd. S. (Brighton High School parking lot); open Sundays 9 a.m.–1 p.m., May–October; www.brightonfarmersmarket.org/

- **Namaste Indian Grocery:**

3047 W. Henrietta Rd., (585) 424-2980

- **Tops Friendly Markets:**

1900 Clinton Ave. (Tops Brighton Plaza), (585) 442-2990, www.topsmarkets.com





Where to go in ROC

Parks

- **Highland Park**

Home of the Lilac Festival, Highland Park supports beautiful flora and fauna year-round! A great place for a picnics, walks, or cool lookouts, this park won't disappoint!

- **Genesee Valley Park**

Just down the road from Whipple Park, is Genesee Valley Park! This Park has plenty of space, views of the river, and various trails for a leisurely walk.

- **Mount Hope Cemetery**

Mount Hope Cemetery, one of the most remarkable Victorian cemeteries in America, is a magnificent 196 acres of lofty hills and picturesque valleys created by glaciers and transformed into a beautiful historic cemetery. The cemetery is a veritable museum of funerary sculpture and mausoleums spanning more than a century and a half.

- **Ontario Beach Park**

This Park offers ample parking, nice public restrooms, nearby food options, plenty of grassy spots for picnicking, a beach, and a wonderful view of the lake!

- **Letchworth State Park**

Letchworth State Park, renowned as the "Grand Canyon of the East," is one of the most scenically magnificent areas in the eastern U.S. The Genesee River roars through the gorge over three major waterfalls between cliffs--as high as 600 feet in some places--surrounded by lush forests.

- **Niagara Falls State Park**

Open 365 days a year, Niagara Falls State Park has awe-inspiring scenery! It also features thrilling attractions, interactive exhibits, miles of hiking trails, and delectable dining options in a family-friendly environment. It's an adventure-packed experience! No passport is needed to experience an unforgettable and breathtaking Niagara Falls vacation.

Museums

- **The Strong National Museum of Play**

The Strong National Museum of Play Established in 1969 and devoted solely to the study of play, and it has the interactive characteristics of a children's museum, making it the second largest museum of that type in the United States.

- **The Rochester Museum & Science Center**

The Rochester Museum & Science Center (RMSC) ignites a passion for lifelong learning and equips our community with the foundational skills, knowledge, and understanding of the technologies needed to help solve society's most pressing challenge.

- **George Eastman Museum**

Founded in 1947 as an independent nonprofit institution, the Eastman Museum is the world's oldest photography museum and one of the oldest film archives.

A visit to the Memorial Art Gallery is a journey through more than 5,000 years of art history. From the relics of antiquity to works in the vanguard of contemporary practice, MAG offers a panorama of the world's art.

- **The National Susan B. Anthony Museum & House**

The National Susan B. Anthony Museum & House in Rochester, New York was the home of the legendary American civil rights leader, and the site of her famous arrest for voting in 1872. This home was the headquarters of the National American Woman Suffrage Association when she was its president.

25 (plus) things to do before you graduate

1. Attend the Rochester International Jazz Festival in late June. Or, better yet, go to a *few* festivals, including Park Ave., Corn Hill, Fringe, Lilac, and so many more fantastic options.
2. Buy groceries at one of the many Wegmans.
3. Visit the Memorial Art Gallery—bring your student I.D. badge to get in for free (pay extra for visiting exhibits).
4. Check out the University's Eastman School of Music, which *Newsweek* magazine has declared to be the “hottest music school in America,” and listen to hundreds of free concerts.
5. Visit the Finger Lakes region to try some of the best wines in the US and explore some of New York State's quaintest small towns and most scenic natural beauty; the spectacular gorges, waterfalls, and long lakes are products of the Ice Age.
6. Tour the Erie Canal locks in Pittsford. Take the boat from Schoen Place; after the cruise, dine on the deck at Aladdin's Natural Eatery. Make sure you save room for ice cream at nearby Pittsford Farms Dairy.
7. Kayak Irondequoit Creek downstream from Ellison Park to Irondequoit Bay.
8. Great Lakes Seaway Trail shoreline is home to a fascinating collection of 28 historic lighthouses and two modern replicas. Several of these lighthouses are nearby, including the Charlotte-Genesee Lighthouse.
9. Take a trip to Letchworth State Park. (Letchworth looks like a mini Grand Canyon!)
10. Go out to eat at Good Luck Restaurant.
11. Order a craft cocktail at Cheshire (. . . if you can find it!).
12. Go camping in the Adirondacks when you have a free weekend.
13. Take a road trip south to the Corning Museum of Glass. (If you like sports, add the nearby Baseball Hall of Fame to your itinerary.)
14. Speaking of sports, if you're a fan of . . . soccer—Rhinos (men) or Ravens (women); baseball—Red Wings; hockey—Amerks; lacrosse—Knighthawks; football—Buffalo Bills.
15. Visit the Public Market every Saturday—grab some coffee at Java's and take in all the fresh food vendors.
16. If you are itching to go to the beach, take a 30-minute drive west to Hamlin Beach State Park (it's the closest thing around to what we think of when we think “beach”). You can even reserve pavilions for a cookout. (Both Charlotte and Durand Eastman Beaches are closer to the University at only about a 15-minute drive north.)
17. Fill up at Food Truck Rodeos in the summer.
18. Take a stroll through Highland Park and smell the lilacs (best seen during the Lilac Festival).
19. Subscribe to a season of shows at one of many local performing arts venues: the Auditorium Theatre is home to the Rochester Broadway Theatre League (RBTL); Kodak Hall at Eastman Theatre hosts the Rochester Philharmonic Orchestra (RPO), and the Geva Theatre Center offers a broad range of productions on its two stages.
20. For awesome views of the city, watch a sunset or sunrise from beside the reservoir at Cobbs Hill Park.
21. See a movie at the historic Little Theatre, which dates back to 1929 and whose five intimate theaters feature independent and foreign films; the Cinema Theater, built in 1914 and one of the oldest continuously operated motion picture theaters in the US; or the Dryden Theatre at the George Eastman Museum, one of the very few theaters in the world that can project original 35mm nitrate film (from its own vaults and other archives).
22. Visit Monroe County's Seneca Park Zoo, which first opened in 1894 and has grown to include 20 acres and more than 90 species.
23. Visit the Dancing Wings Butterfly Garden at the National Museum of Play at the Strong museum, which also houses the world's largest and most comprehensive collection of historical materials related to play and is home to the International Center for the History of Electronic Games, the National Toy Hall of Fame, and the World Video Game Hall of Fame.
24. See a laser show at the Rochester Museum & Science Center's Strassenburgh Planetarium.
25. For a weekend excursion, stay in Niagara-on-the-Lake (not to be confused with Niagara Falls), where you can shop small boutiques and stroll picturesque streets.
26. Chow down on delicious barbeque at Dinosaur Bar-B-Que or Sticky Lips BBQ Juke Joint—you decide which one has the best barbeque!
27. Take a summertime drive to Canandaigua's Sonnenberg Gardens and Mansion State Historic Park and saunter through the serene 50-acre late-19th-century Victorian estate with Queen Anne-style mansion and nine formal gardens of the world.
28. Go ice skating outdoors at Dr. Martin Luther King Jr. Memorial Park at Manhattan Square (in the city) or Highland or Genesee Valley Parks close to River Campus.
29. Head off to Bristol Mountain—a drive of less than 40 miles—to ski all winter on its 35 slopes and trails; most are lit at night, and all have state-of-the-art snowmaking equipment.



UNIVERSITY *of*
ROCHESTER

Office of Residential Life and Housing Services

020 Gates Wing, Box 270468

Rochester, NY 14627-0468

(585) 275-3166

Fax: (585) 276-1886

Office Hours: 8:30 p.m.–5 p.m.

Leases, Check-in/out, Transfers, Availability, Waiting Lists

(585) 275-5824

uapts@reslife.rochester.edu

Programs, Special Events, Student Conduct, Resident Concerns

(585) 275-1081

gradhousing@rochester.edu