



Records and Registration Special Interest Group (SIG)

UR Student



Agenda

- ▶ Background
- ▶ Vision and Guiding Principles
- ▶ Project Objectives and Values
- ▶ Program Overview (Team, Scope, Timing and Stakeholders)
- ▶ Special Interest Groups
- ▶ Project Communications
- ▶ Terminology
- ▶ Workday Demonstration
- ▶ Q&A / Next Steps

Background

Welcome to the Student Information Systems Replacement Project, UR Student!

The new UR Student system is geared to replace the highly complex, legacy Student Information System (SIS) in place for more than 30 years. A modern solution is now available to record the University's student finance, records and registration, admissions and financial aid activities.

UR STUDENT

Vision

The University of Rochester envisions reliable, high quality student information systems and processes that will:

- Be **flexible and extendable**, accommodating current priorities and requirements, and have the ability to easily evolve with changing and as yet unforeseen academic and administrative realities, such as new forms of assessment and outcome tracking
- Provide **robust data capture and reporting capabilities, and verified, complete data** to allow the University and our schools to better understand and support progress toward strategic goals, and the progress of our students toward their academic goals.
- Provide a **single integrated source for core student data and services**, and easier, real-time, integration with ancillary and third-party systems
- Create a **personalized system** that provides users with the information and services they need, when and where they need it
- Result in **configurable, reliable and automated processes** for students, faculty and staff to achieve better outcomes with less effort

Guiding Principles

- We will adopt common business practices wherever possible to support a consistent experience. We will differ only where absolutely required
- We will structure data to improve our collective reporting and analytic capabilities
- We will automate activity and processes to enable staff to improve service for all stakeholders
- We value integrated systems and processes over disparate systems and processes
- We will adapt business and academic practices as necessary to implement an effective solution

Project Values

- Respect for all opinions
- Successful partnering with stakeholders
- Being accountable for our own work

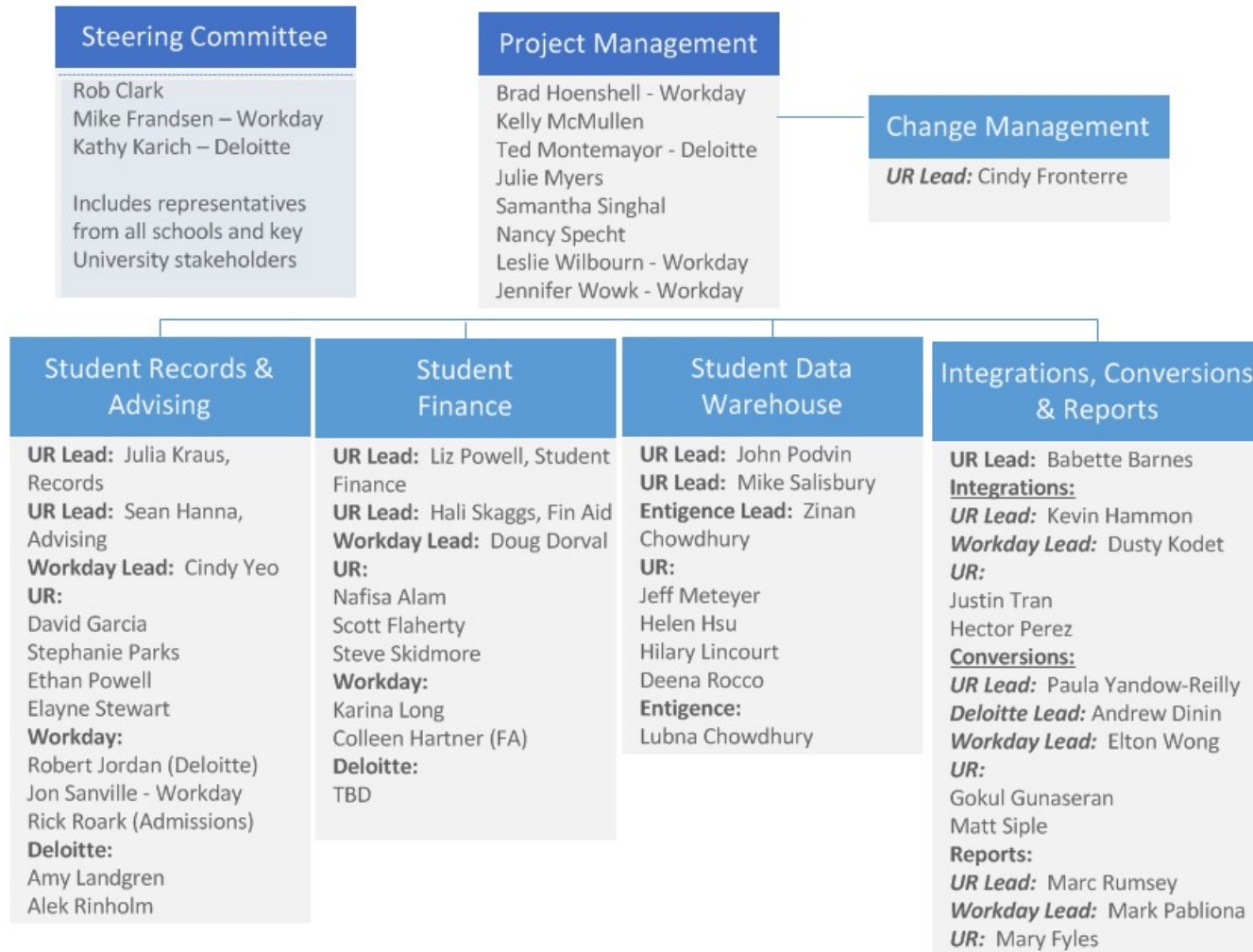
SIG Short Term Objectives

- Overview of the Project Status
- Program of Study: what does this look like in UR Student?
- Preview of a Course in UR Student
- Identify concerns related to records and registration

SIG Meeting Principles

- Be on time
- Use specific examples, when possible
- Attack problems, not people
- Limit sidebar conversations
- Ask questions
- Be willing to discuss the 'undiscussable'
- Stay on point as best as possible
- Be humble and honor the group
- Represent your area to the best of your abilities

Program Overview – Team



Program Overview – Phase 1 Scope

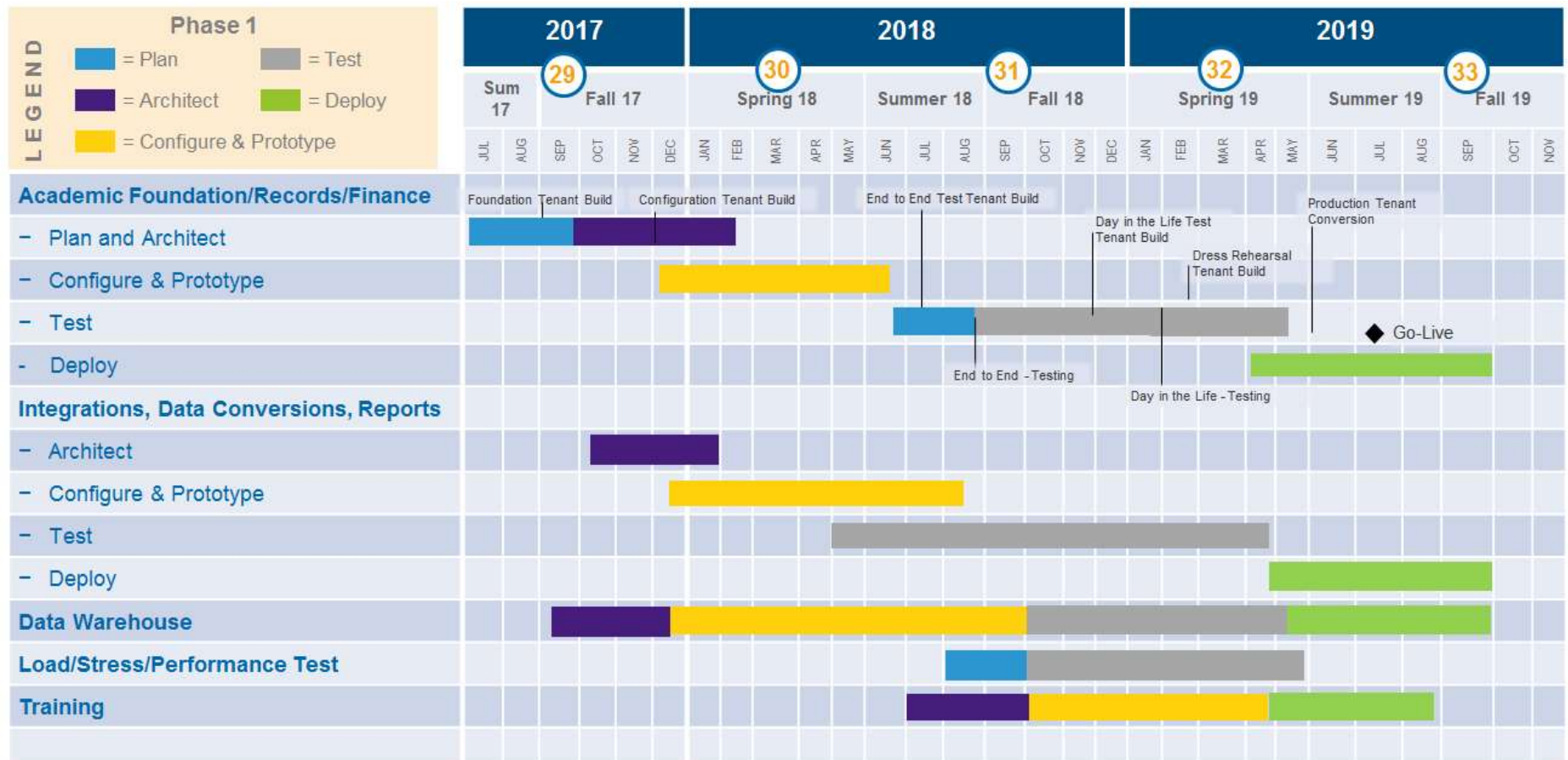
Phase 1

- Academic Foundation/Core
- Engagement
- Student Finance
- Student Records and Registration
- Curriculum Management
- Academic Advising
- Data Warehouse for Student Finance, Student Records and Academic Advising

Systems Being Replaced

- The SIS
- CDCS
- Darden (Simon)
- SON Database (SON) – *partial*
- Warner Internet (WAIS) - *partial*
- Web Registration
- Instructor Access
- Advisor Access
- Student Access
- Alumni Access

Program Overview – Phase 1 Timeline



Special Interest Groups

■ Records and Registration SIG

- Function- To represent your area of the University and inform the UR Student Records and Registration team from the functional user perspective.
- Roles— Advisors to the Student Records and Registration group
- Responsibilities— exploration, conversation, communication, solutioning, problem solving, etc.
- Interdependencies— Advising, Student Finance, Financial Aid, Admissions, Institutional Research, Information Technology

■ Advising SIG

- Function- To represent your area of the University and inform the UR Student Advising team from a functional perspective
- Roles- Advisors to the UR Student team members who are working on the advising configuration
- Responsibilities- exploration, conversation, communication, solutioning, problem solving
- Interdependencies- Student Records, Institutional Research, Student Finance, Financial Aid, Admissions, Informational Technology

Special Interest Groups

■ Student Finance

- Function- To represent your area of the University and inform the UR Student Finance team from the functional user perspective.
- Roles– Advisors to the Student Finance group
- Responsibilities– exploration, conversation, communication, solutioning, problem solving, etc.
- Interdependencies– UR Financials, Financial Aid, Graduate Studies

■ Institutional Research & IT, Reporting SIG

- Function- To represent your area of the University and inform the UR Student Institutional Research team from the functional user perspective
- Roles- Advisors to the UR Student team members who are working on the datawarehouse rebuild and Institutional Research
- Responsibilities- exploration, conversation, communication, solutioning, problem solving, etc.
- Interdependencies- Student Records, Advising, Student Finance, Financial Aid, Admissions, Information Technology

Project Team Directory

- See project directory for contact information for members

<http://www.rochester.edu/urstudent/team/>

Key Project Dates

- Demo Days- April 2018
- End to End Testing- August 2018
- Day in the Life Testing- February 2019
- Go-Live!- July 2019

Expectations: Communication

Internal

- Provide regular updates on your progress to those who are effected
- Provide immediate alerts to changes in business requirements

External

- Be an advocate for the project
- Promote events
- Use the website
 - [Contact Us](#) for questions/feedback
- Answer questions you know and provide feedback
 - forward ones you do not for response (1-2 day turnaround)
- Participate in UR Student training and support activities

Expectations: Collaboration

- Provide other teams with inputs in a timely fashion
- Identify and explain necessary requirements on current business processes
- Suggest process improvements where applicable
- Provide input to the benefit of the design as a whole
- Participate in testing activities providing status and feedback
- Identify risks as soon as possible
- Remember think globally and full transparency

Project Interaction Tools

- **Primary Tool:**

- Zoom
- UR Student Website
- Email (Records & Registration SIG Listserv-
UR_STUDENT_RECORDS_SIG@LISTS.ROCHESTER.EDU)

- **Other useful methods to communication**

- Box
- Jira
- SharePoint

Program of Study- Today

CLASS	GROUP	REG STATUS / REASON		MOST-RECENT-TERMS			LAST-CHG-DATE						
19	1	R	REGISTERED	191	182	03/19/18							
CAMPUS		TUITION		DISCOUNT	NROTC	HNDCP	CONF	DEC					
R RIVER CAMP		H10 HALF YEAR						ROCH					
								CURR					
								Y					
----- ADVISORS -----				----- EMPLOYER -----									
1:													
2:													
----- P R O G R A M I N F O R M A T I O N F O R T E R M 182 -----													
--- AREA OF STUDY ---													
COL	TIME	DEGR	MAJ1	MAJ2	OFFL	MI1	MI2	MI3	INS1	INS2	A-STAT	1ST-TRM	GRD
1: 01	F	BA	STT	FEC	Y						A	161	192
2: 01	F	BS	NTH		Y						A	161	192

UR STUDENT

Program of Study- Today

CLASS	GROUP	REG STATUS / REASON	MOST-RECENT-TERMS			LAST-CHG-DATE							
G	9	R REGISTERED	191	184	03/12/18								
			ROCH										
CAMPUS	TUITION		DISCOUNT	NROTC	HNDCP	CONF	DEC	CURR					
R RIVER CAMP	B25 SIMON MMH												
----- ADVISORS -----				----- EMPLOYER -----									
1:	20531843	TUTTLE, JANE I											
2:													
----- P R O G R A M I N F O R M A T I O N F O R T E R M 182 -----													
--- AREA OF STUDY ---													
COL	TIME	DEGR	MAJ1	MAJ2	OFFL	MI1	MI2	MI3	INS1	INS2	A-STAT	1ST-TRM	GRD
1:	02	P	MS	BUS		Y					A	181	
2:	08	P	MS	FNP		Y					A	171	

UR STUDENT

Program of Study- Today

```
CLASS      GROUP      REG STATUS / REASON      MOST-RECENT-TERMS      LAST-CHG-DATE
  G         6         R REGISTERED                182   181                03/19/18
                                ROCH
CAMPUS      TUITION      DISCOUNT  NROTC  HNDCP  CONF  DEC  CURR
  R RIVER CAMP      B85 PER COURSE

----- ADVISORS -----
1: 20123130  OPLADEN, JANICE MA
2:

----- EMPLOYER -----

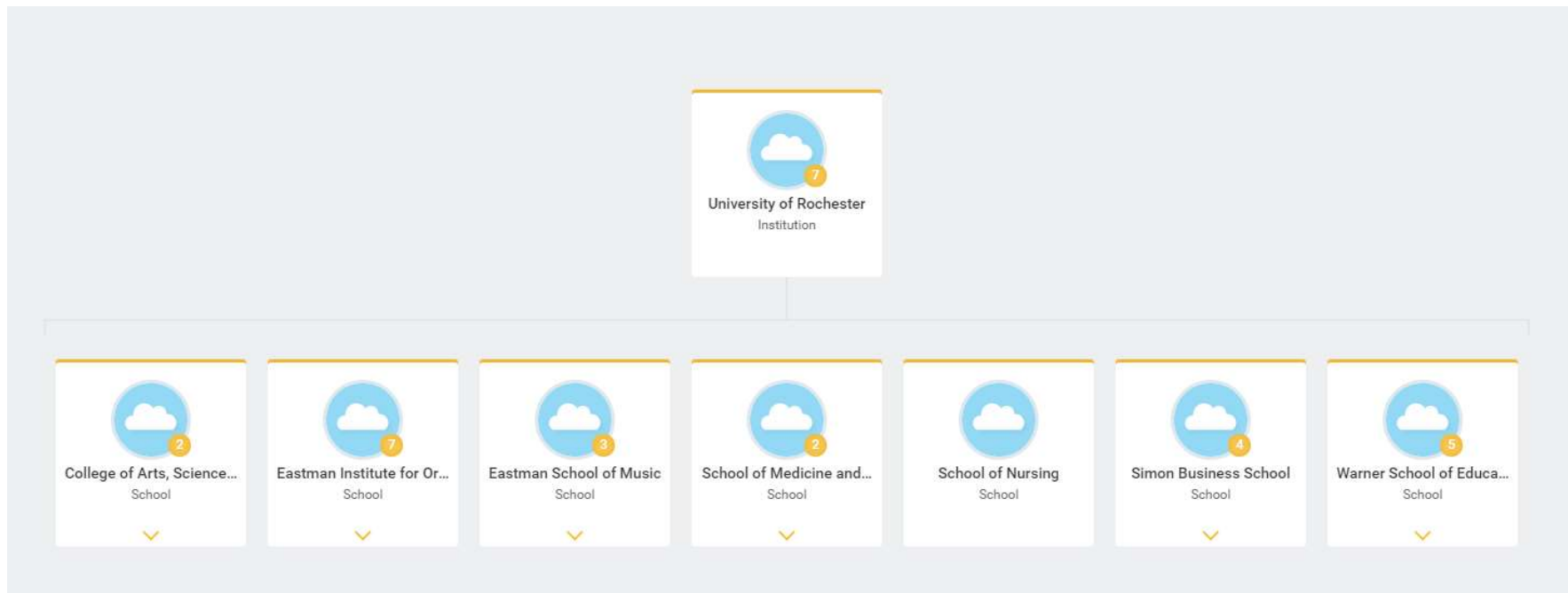
----- PROGRAM INFORMATION FOR TERM 182 -----
      --- AREA OF STUDY ---
      COL TIME DEGR  MAJ1  MAJ2 OFFL  MI1 MI2 MI3  INS1  INS2 A-STAT 1ST-TRM GRD
1: 08   P   MS   AGA      Y
2:
```

UR STUDENT

Terminology- Future v. Current

- Academic Unit- Schools/Colleges/Departments
- Academic Periods- Term/Semester/Quarter
- Academic Level- Division
- Program of Study- Major/Minor/Cluster/Certificate
- Enrollment- Registration
- Credential- degree

Academic Unit Structure



UR STUDENT

Program of Study- UR Student

- College, Division, Degree, Major, Minor, Instrument is transformed
- Ability to capture infinite numbers of programs on an individual student
- Program codes are smart coded, to leverage current structures
 - School Code
 - Credential/ Program Type
 - Major/Minor/Cluster code
 - 01_BS_MTH Mathematics BS Undergraduate Major
 - 01_BA Bachelor of Arts
 - 01_BA_ANT Anthropology BA Undergraduate Major
 - 01_CL_H1ASL002 Advanced Proficiency in American Sign Language Cluster
 - 06_BM_INS_CL Clarinet
 - 02_MS_HCC Health Care Management Masters of Science

UR STUDENT

Program of Study- UR Student

Alex Lovern
Student | University of Rochester

Actions

Email

Summary

Personal

Contact

Academics

Student Financials

Financial Aid

History

Action Items and Holds

MW Sample Custom Card

Overview

Current Classes

Plan

Academic History

Competencies

Academic Progress

External Records

▼ Hajim School of Engineering & Applied Sciences/Undergraduate (Jewish Studies Cluster/Biomedical Engineering B.S. Undergraduate Major/Advanced Macroeconomics Cluster)


Educational Objective 3 items

Program of Study	Program Area Type	Program Area	Declare Date	Expected Completion	Earned Credential	Conferral Date	Details	Status	Primary	
Biomedical Engineering B.S. Undergraduate Major			03/10/2018	01/2022			View	In Progress	Yes	Request
Jewish Studies Cluster	Division	Humanities	04/06/2018	05/2020			View	In Progress	No	Request ▼
Advanced Macroeconomics Cluster	Division	Social Sciences	04/06/2018	05/2020			View	In Progress	No	Request ▼

[Add Program of Study](#) [Add Advisory Program](#)

UR STUDENT

Program of Study- UR Student



Alex Keaton
Student | University of Rochester

Actions

Email

Summary

Personal

Contact

Academics

MW Sample Custom Card

Overview

Current Classes

Plan

Academic History

Competencies

Academic Progress

External Records

Simon Business School/Masters (Master of Science in Finance)

Educational Objective 1 item

Program of Study	Declare Date	Expected Completion	Earned Credential	Conferral Date	Details	Status	Primary	
Master of Science in Finance	09/05/2018	09/2020			View	Matriculated	Yes	Request

[Add Program of Study](#)[Add Advisory Program](#)

UR STUDENT

UR Student Demo

- <https://wd5-impl.workday.com/wday/authgwy/rochester1/login.html?returnTo=%2frochester1%2fd%2ftask%2f3005%242658.html>
- Programs of Study

Data that you are about to see is not real student data. Scenarios have been created, with the attempt to be as close to a real scenario as possible.

Q&A

- What didn't this session cover about the project, that you have questions on?
- What concerns come to mind with the change in Program of Study structure?

Next Steps

- Meeting frequency

- Monthly?
- Days/times preferred?

- Topics

- Subjects & Courses
- Registration
- What would you like to see?

Thank you!

Thank you for attending today's Records and Registration SIG meeting. Should you have any questions, please do not hesitate to contact me.

UR STUDENT