

Experience Rochester

**PURSUING EQUITY IN EDUCATION,  
HEALTH, AND SOCIAL POLICY**

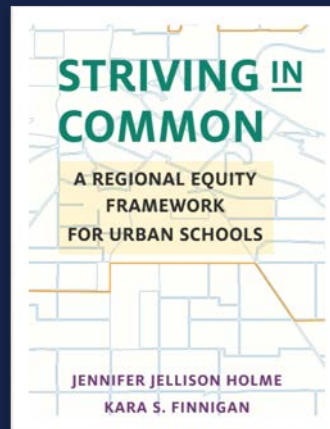
**THURSDAY, JULY 30 | 12–1 P.M**



UNIVERSITY *of* ROCHESTER

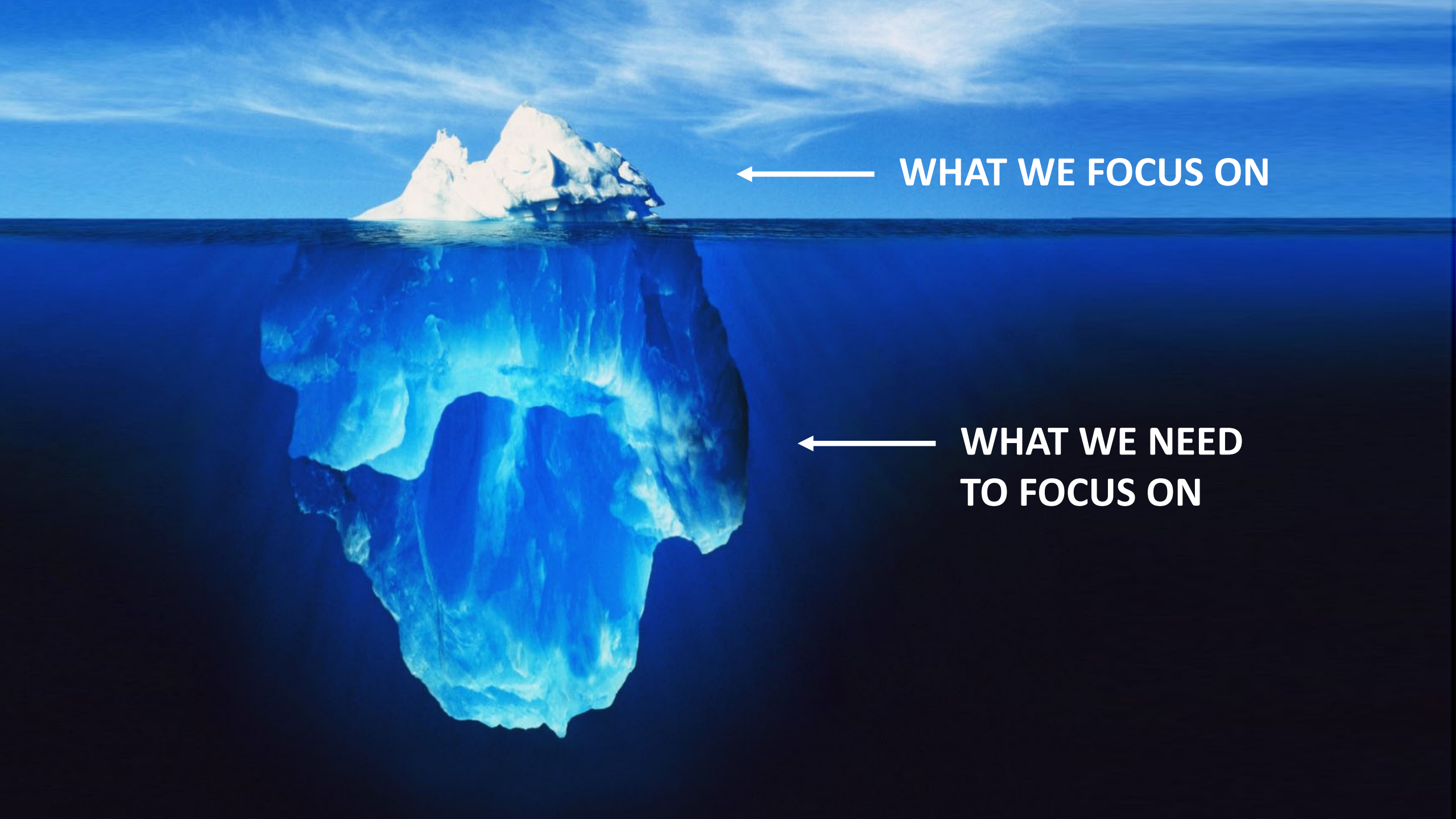
# Dr. Kara S. Finnigan

PROFESSOR | WARNER SCHOOL OF EDUCATION



# MISSATTRIBUTION OF THE POLICY PROBLEM



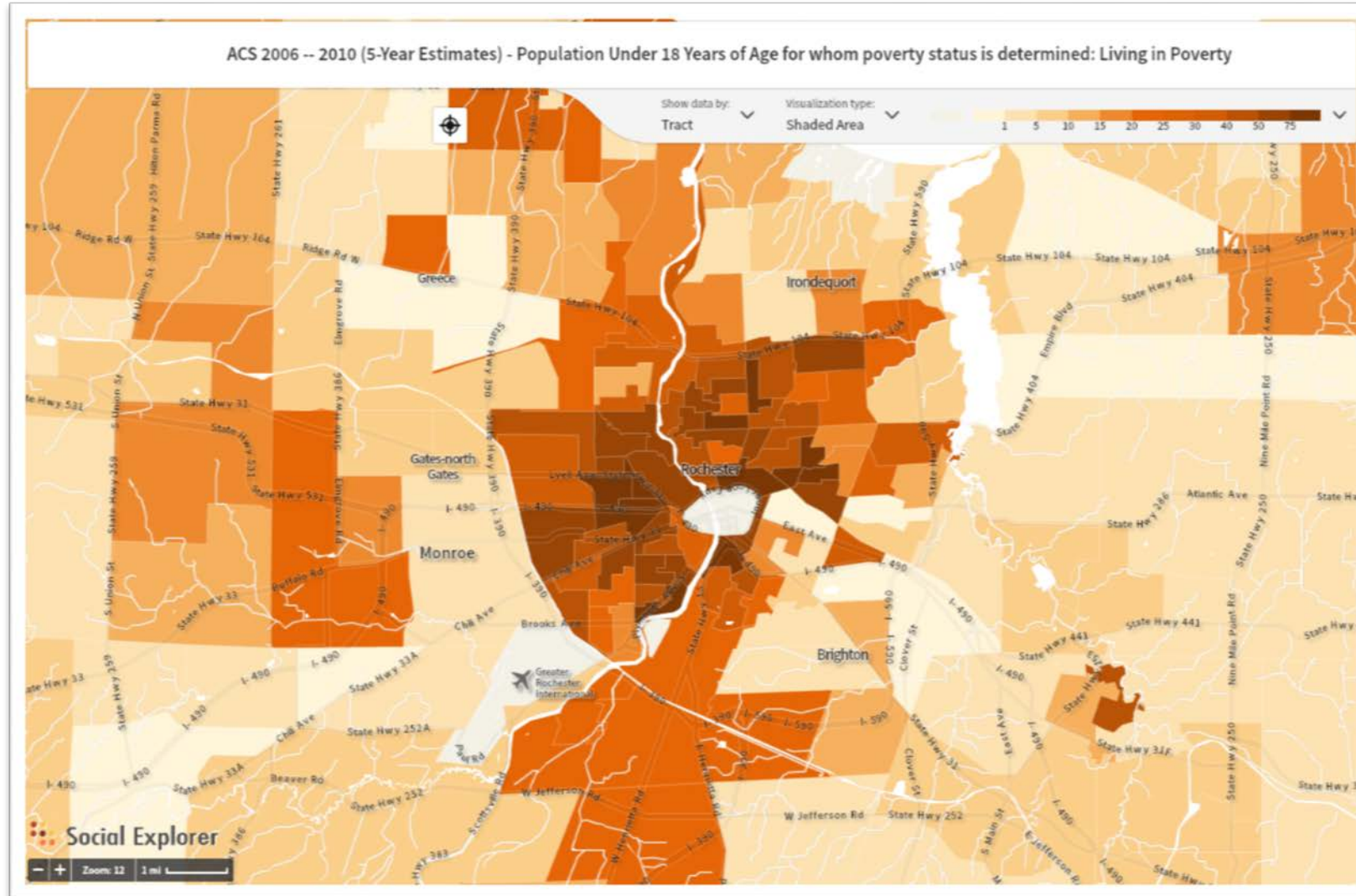


← **WHAT WE FOCUS ON**

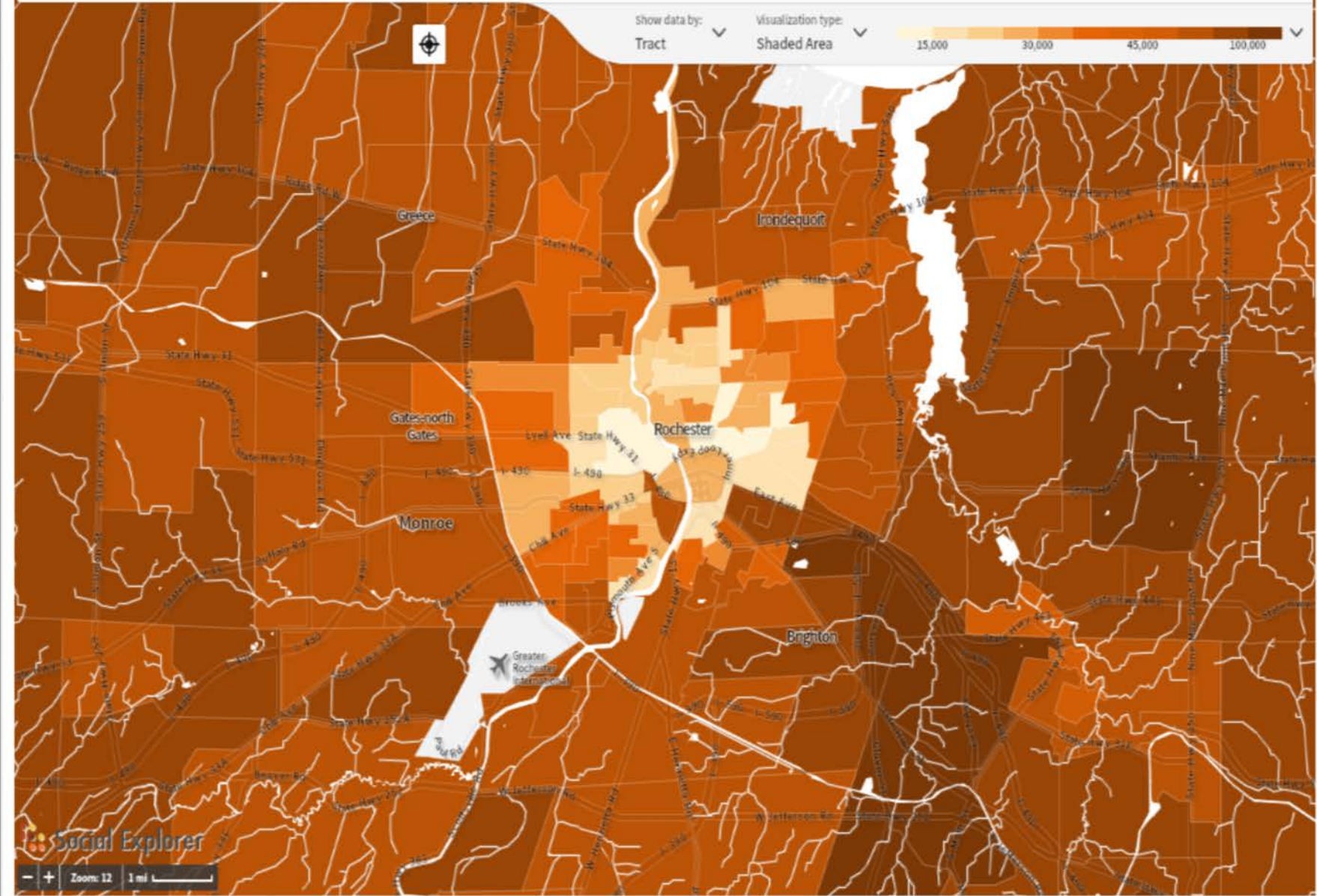
← **WHAT WE NEED  
TO FOCUS ON**



# DISINVESTMENT AND STRUCTURAL RACISM IN POLICIES LED TO SEGREGATION



ACS 2006 -- 2010 (5-Year Estimates) - Median Family Income (In 2010 Inflation adjusted dollars)



## REGIONAL SOLUTIONS ARE REQUIRED

- Use multiple policy strategies in combination AND
- Attack systems of competition AND
- Reduce barriers resulting from boundaries (or students “stuck in place”) AND
- Require attentiveness to regional inequities through governance and resources

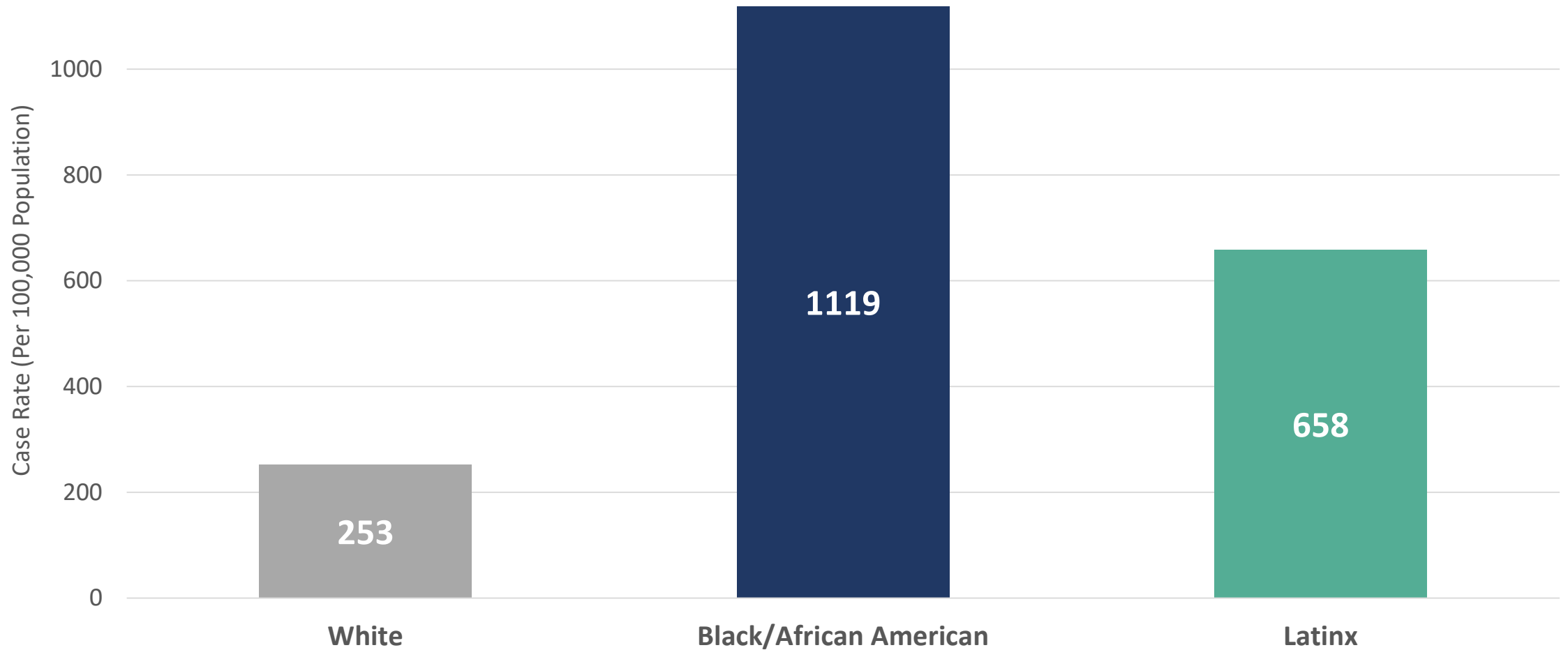
# Wade S. Norwood

CHIEF EXECUTIVE OFFICER | COMMON GROUND HEALTH

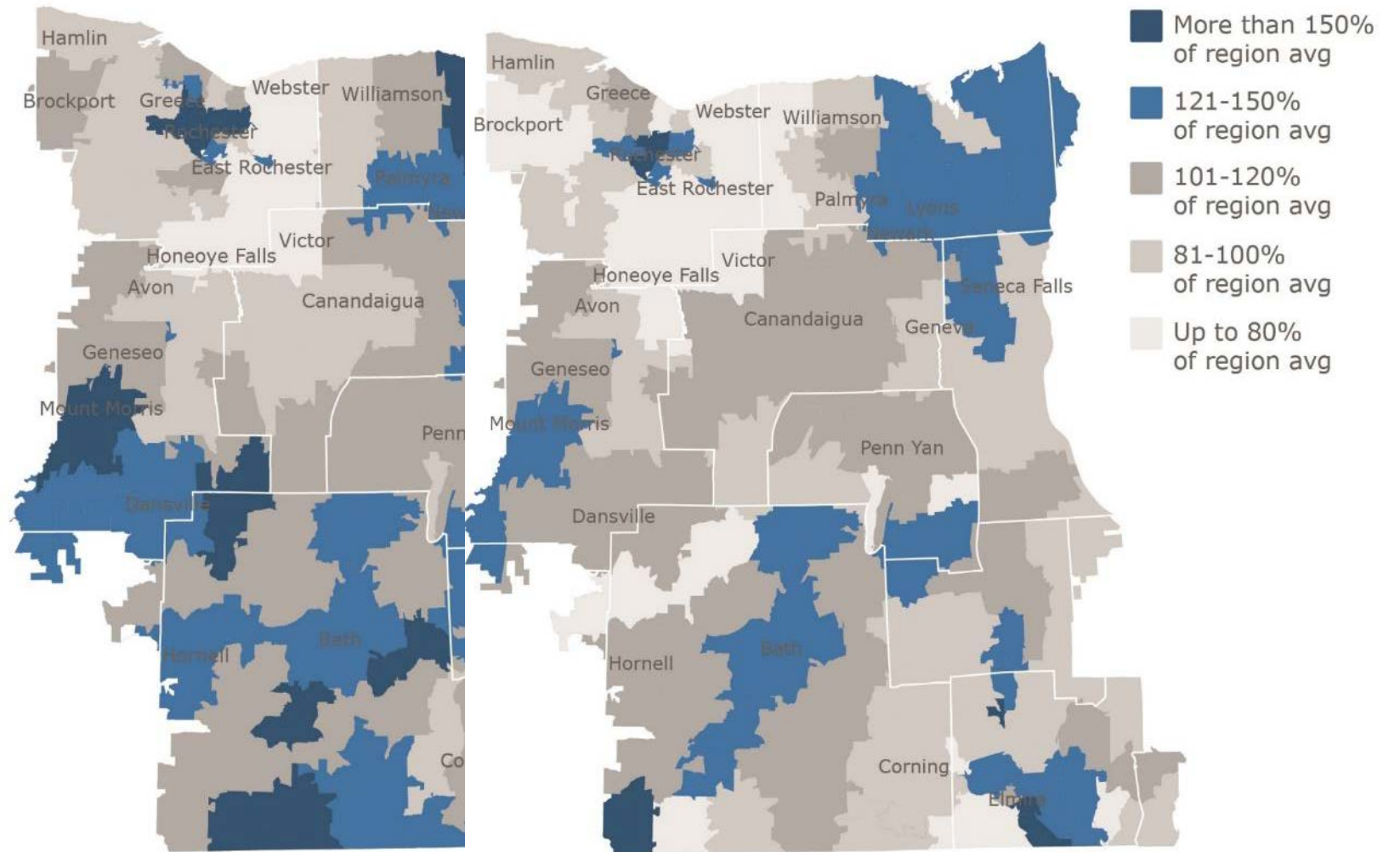


# COVID-19 CASE RATE IS 4.4X HIGHER FOR BLACKS

Compared to Whites in Monroe County 6/15/2020, age-adjusted



# POVERTY CUTS LIVES SHORT



Source: American Community Survey (left); New York State Department of Health Vital Stats

# MENTAL HEALTH

Residents with the lowest incomes have

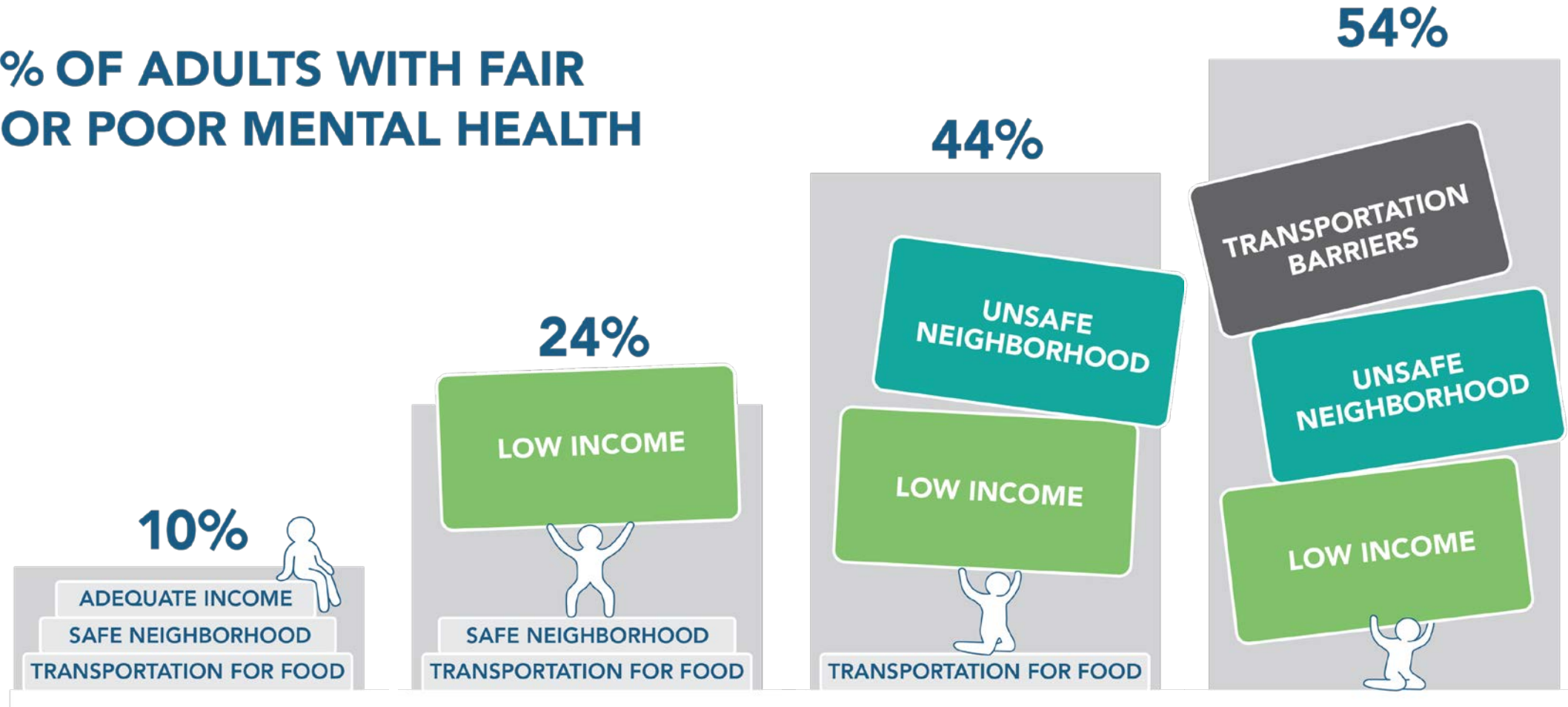
**3x** feelings of helplessness

**4x** significant anger

**4x** self-destructive behavior

# MENTAL HEALTH DETERIORATES UNDER SOCIOECONOMIC BURDENS

**% OF ADULTS WITH FAIR OR POOR MENTAL HEALTH**







# THE HIGH BLOOD PRESSURE COLLABORATIVE