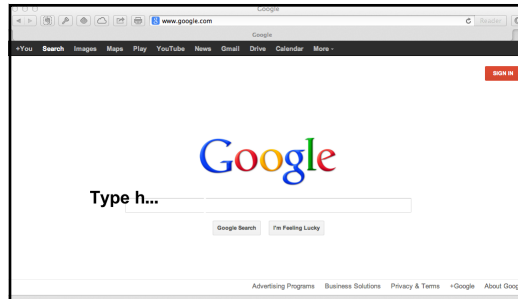


Determine what IP Address & Mac Address your computer has

Any computer that is connected to a modern network has an IP Address.

But what is an IP Address? An IP Address is analogous to a "Internet" telephone number. When your computer sends information to the network (Intranet / Internet) is stamped with your IP Address, so that the information that is being sent to your device can be sent to the proper device ("telephone number").

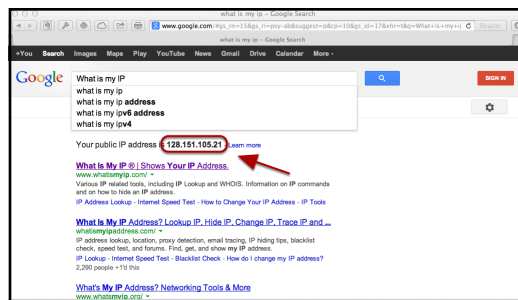
Finding your IP from Google



This method will work with any OS that is already connected to the Internet, including both Macintosh, Windows PC, Unix, Linux, etc.

The only requirement is that you have a web browser, and browse to Google.

- **Open a Web browser**, for Example, Safari, Internet Explorer, Firefox
- In the Search box, type "What is My IP".



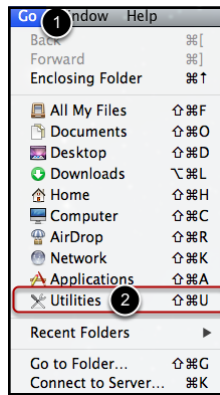
Google will start to display the search results, right below the search window, will be:

Your Public IP Address is xxx.xxx.xxx.xxx

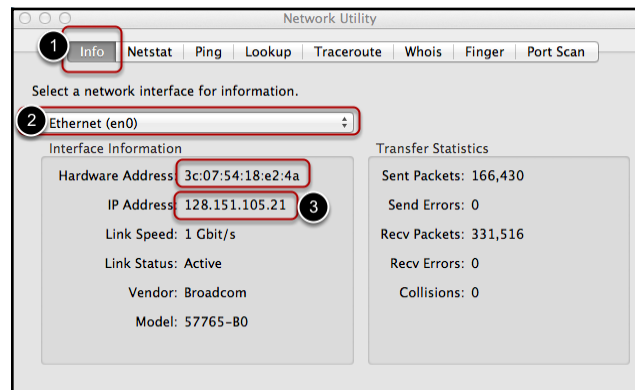
That is the IP Address of your device, that is being shown to the Internet. Typically, this will be the IP Address of your device.

It is possible, that your system could be behind a proxy, NAT Router, or some other device that hides your actual IP from the Internet. To determine your IP in those cases, we will need to use an OS specific method.

Determine your IP & Mac Address - Network Utility



- From the **Finder**, click on the **Go** Menu
- Choose "**Utilities**"



- Run the "**Network Utility**" Application
- Click on the "**Info**" Tab
- From the Pull down choose the Network Interface (e.g. Ethernet, Airport, Wifi, etc) that you wish to Find the IP of

The IP Address will be listed in the Interface Information box, along with the Hardware Address (AKA MAC Address). MAC Address is the "Media Access Control" address, which is the hardware identification number that uniquely identifies each device on a network. IP Addresses can be inadvertently duplicated, whereas the MAC Address is assigned by the manufacturer, and can not be changed.

Determine your IP - Macintosh (System Information)

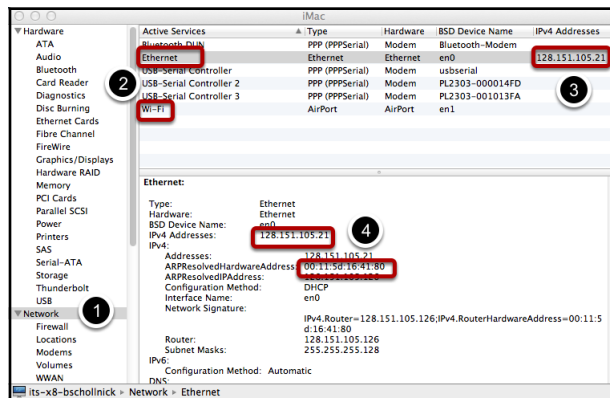


- Click on the **Apple Menu**
- Click on "**About this Mac**"
- Click on "**More Info...**"



If you are not running Mac OS X 10.7 (Lion) or Mac OS X 10.8 (Mountain Lion), then skip this step.

- Click on System Report

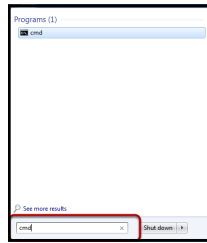


- Click on "**Network**"
- Highlight the Interface (e.g. **Ethernet, Airport or Wi-Fi**) that you wish to view

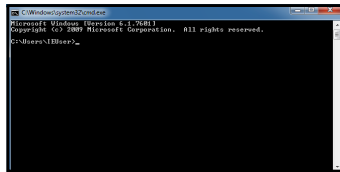
The "**ARPResolvedHardwareAddress**" is the Hardware / Mac Address of the interface.

This will display all of the Network Interfaces that are installed on the computer. Generally, the Ethernet and Wi-Fi addresses are the only IP addresses that are necessary for troubleshooting purposes. These IP Addresses are not interchangeable for troubleshooting purposes. Please make sure to indicate which IP Addresses go with which interface.

Windows (ipconfig)



- Click on the Windows Button (**Start Button or Windows Icon**)
- In the Search box, type "**CMD**" and press the Enter key
- A DOS window will appear



Inside the Dos Window, type:

```
IPCONFIG /ALL
```

And press the Enter Key

```
C:\Windows\system32\cmd.exe
Microsoft Windows [Version 6.1.7601]
Copyright (c) 2009 Microsoft Corporation. All rights reserved.

C:\Users\IEUser>ipconfig /all

Windows IP Configuration

Host Name . . . . . : IE8Win7
Primary Dns Suffix . . . . . :
Node Type . . . . . : Hybrid
IP Routing Enabled. . . . . : No
WINS Proxy Enabled. . . . . : No
DNS Suffix Search List. . . . . : its.rochester.edu

Ethernet adapter Local Area Connection 3:

Connection-specific DNS Suffix . : its.rochester.edu
Description . . . . . : Parallel Ethernet Adapter
Physical Address. . . . . : 00-1C-42-5D-89-45
DHCP Enabled. . . . . : Yes
Autoconfiguration Enabled . . . . : Yes
Link-local IPv6 Address . . . . . : fe80-92-8c-f03b-f6-2d-155-15(Prefe
IPv4 Address. . . . . : 128.151.105.68(Prefe
Subnet Mask . . . . . : 255.255.255.224
Lease Obtained. . . . . : Monday, June 10, 2013 11:09:42 AM
Lease Expires . . . . . : Monday, June 10, 2013 12:09:42 PM
Default Gateway . . . . . : 128.151.105.126
DHCP Server . . . . . : 172.31.6.209
DHCPv6 Iaid . . . . . : 301997122
DHCPv6 Client DUID. . . . . : 00-01-00-01-18-08-0B-D4-00-15-5D-00-6D-01

DNS Servers . . . . . : 128.151.50.29
128.151.16.97
128.151.50.101
128.151.224.6
128.151.7.6
Primary WINS Server . . . . . : 128.151.50.37
Secondary WINS Server . . . . . : 128.151.225.137
128.151.225.167
NetBIOS over Tcpip. . . . . : Enabled
```

Depending on the number of network interfaces, you may have to scroll up the DOS window.

The IP number's that would be used for troubleshooting purposes are the **IPv4 Address's**. The MAC address is listed under "**Physical Address**".

If the connection does not have an **IPv4 Address**, then it can be ignored.

Authors and Revisions

Authors

- Benjamin Schollnick

Revisions

- Initial Revision (6/6/2013)
- Changed IPConfig Instructions to add MAC Address.