



Guideline and Flow Charts When University of Rochester is the Reviewing IRB

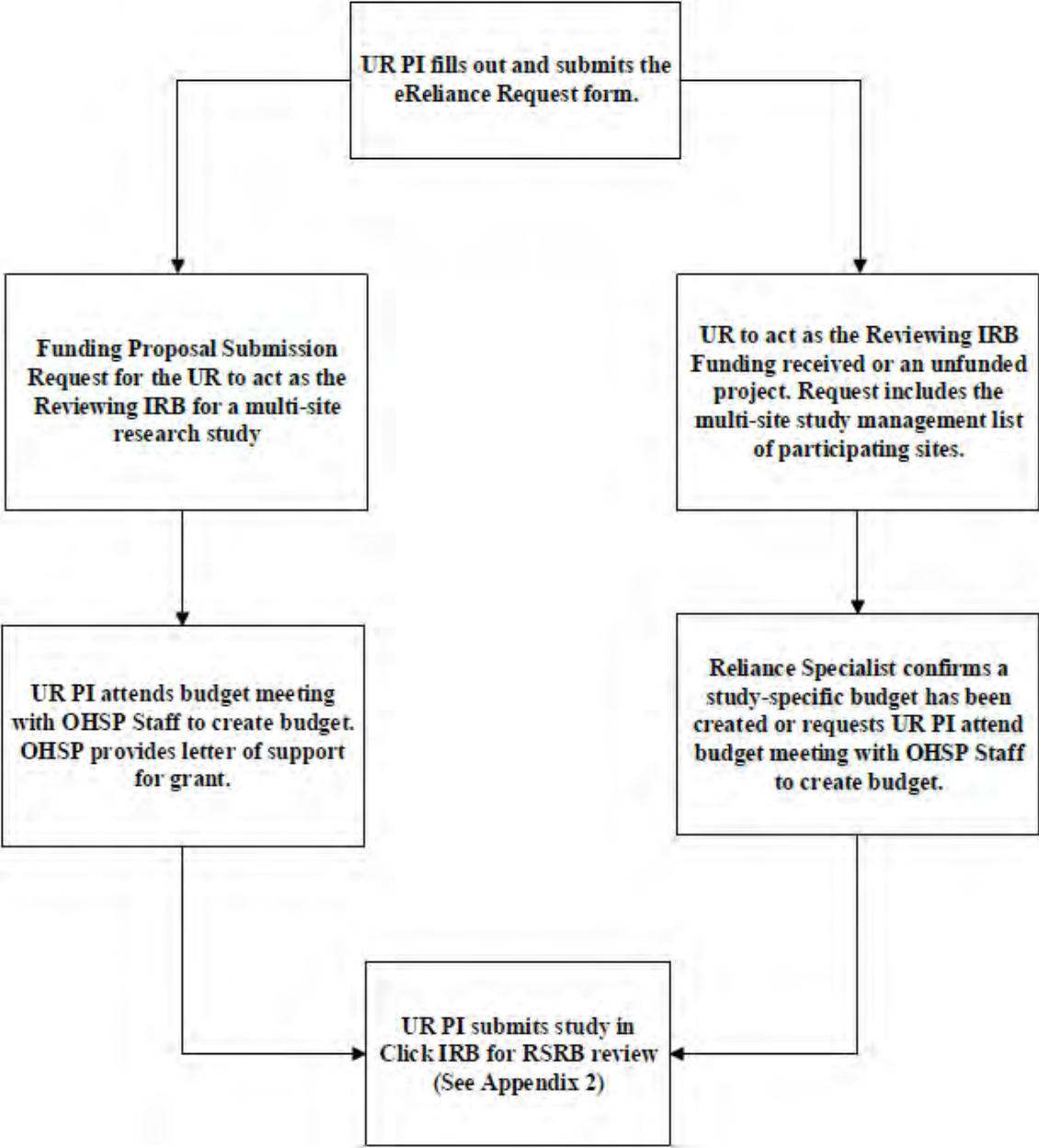
The University of Rochester (UR) may review human subject research that requires expedited or convened board review for another institution's IRB when the research involves more than one site, or when the study received federal funding, as per OHSP [Policy 504 RSRB Reliance for Review](#). When this occurs, UR becomes the Reviewing IRB.

When the UR is the Reviewing IRB, the UR Investigator has specific responsibilities as outlined in [Policy 901 Investigator Responsibilities](#).

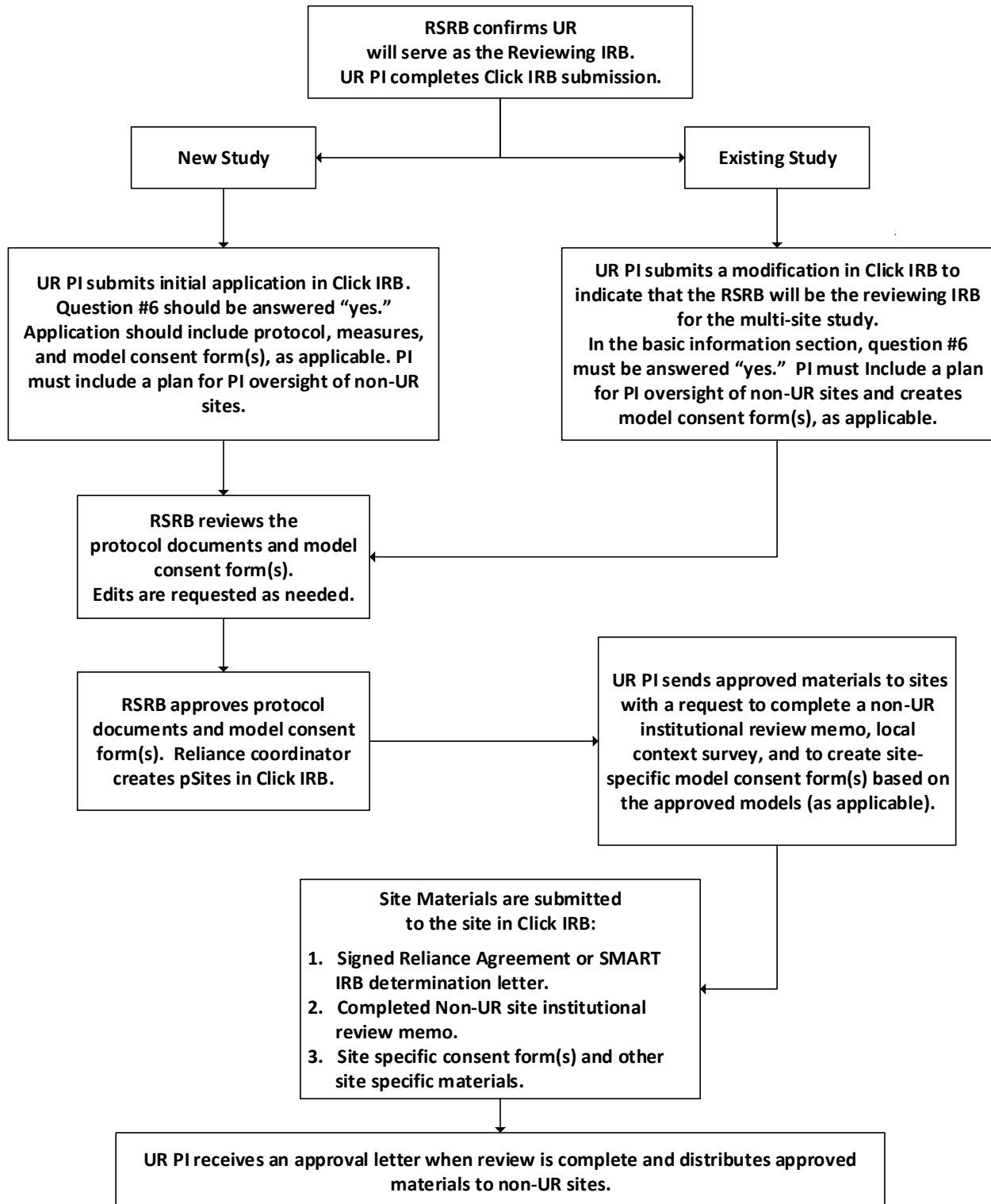
The UR PI should follow the steps outlined on the UR Reviewing IRB Flow Chart, which includes completing the [eReliance Request form](#) (see Appendix 1). The process for RSRB review will vary depending on whether this is a new study or an existing study (see Appendix 2 entitled "Click IRB Submission Process When the RSRB is the Reviewing IRB").

After the protocol materials and model consent documents are approved by the RSRB, the UR PI will distribute these materials to the non-UR sites. Documentation of institutional review and site-specific consent forms, as applicable, will need to be obtained from each non-UR site. Once site materials are submitted and Reliance is determined the participating sites will be added to the IRB Review System.

Request for The RSRB to be the Reviewing IRB- Appendix 1



Click IRB Submission Process When the RSRB is the Reviewing IRB Appendix 2



Request for The RSRB to be the Reviewing IRB- Appendix 3

