
Policy on the Use of Electric Scooters and Electric Bikes at the University of Rochester

I. Introduction:

Effective August 2, 2020, electric scooters and electric bikes (as defined below) are legal to operate on some streets and highways in New York State. The University of Rochester prioritizes the safety of the campus community, and as a result, prohibits the operation of electric scooters and electric bikes on University campuses. Although their use is prohibited on University campuses, this policy permits riders to travel to University campuses using an electric scooter or electric bike and requires that riders park the electric scooter or electric bike in certain designated areas on University campuses when doing so. The appropriate parking area will depend on whether the electric scooter or electric bike is part of the City of Rochester's public share program or is personal to the rider.

As used in this policy, electric scooter and electric bike mean a type of device with handlebars, a floorboard or a seat, and an electric motor that can be powered by the electric motor and/or human power. The term electric scooter and electric bike do not include, and this policy does not affect, the operation of electric wheelchairs or other assistive devices for the disabled.

This policy applies to all members of the University community, including students, faculty, staff, officers, volunteers, and visitors to the University.

II. Policy:

Electric scooters and electric bikes are prohibited from use on all campus sidewalks, campus roadways, and all other outdoor and indoor spaces included in the shaded areas on the campus maps, which are indicated on Exhibit A of this policy. Riders who utilize the City of Rochester's public electric scooter and bike share program should understand that the company that operates the program will geofence those electric scooters and electric bikes to require them to shut down when entering the campus zones prohibited by this policy.

Riders may use electric scooters and electric bikes to travel to University campuses. Riders who use electric scooters and electric bikes that are part of the City of Rochester's public electric scooter and bike share program to travel to a University campus must park the electric scooter or electric bike upright in the designated dismount zones shown in the campus maps indicated on Exhibit A. Electric scooters and electric bikes that are personal to a rider must be parked upright in a bike rack.

Electric scooters and electric bikes may not be parked or stored in any University facility (except for personally owned scooters in bike racks), in University housing, or in any Medical Center building. Electric scooters and electric bikes parked or left unattended on a University campus or in a University facility other than the designated areas described above will be considered abandoned and subject to impound by the University. Riders who wish to retrieve an impounded electric scooter or electric bike should contact the Department of Public Safety for more information.

In addition to the parking requirements above, all e-bikes and e-scooters must comply with the university's fire safety standards regarding lithium-ion batteries. These devices and their batteries are prohibited from being stored or charged inside university buildings, except in designated areas. For more information on fire prevention and battery safety, [please review the Environmental Health and Safety e-bike and e-scooter policy](#).

Policy on the Use of Electric Scooters and Electric Bikes at the University of Rochester

Riders may operate electric scooters and electric bikes on the public roads near University campuses, including Wilson Boulevard, Library Road, Elmwood Avenue, Mount Hope Avenue, Crittenden Boulevard, Kendrick Road, and East River Road. Riders may also operate electric scooters and electric bikes on the Genesee Riverway trail parallel to Wilson Boulevard and the cycle path parallel to Elmwood Avenue. Riders are subject to all state and local traffic laws when operating an Electronic Scooter in these areas.

The University is not responsible for theft or damage to electric scooters or electric bikes.

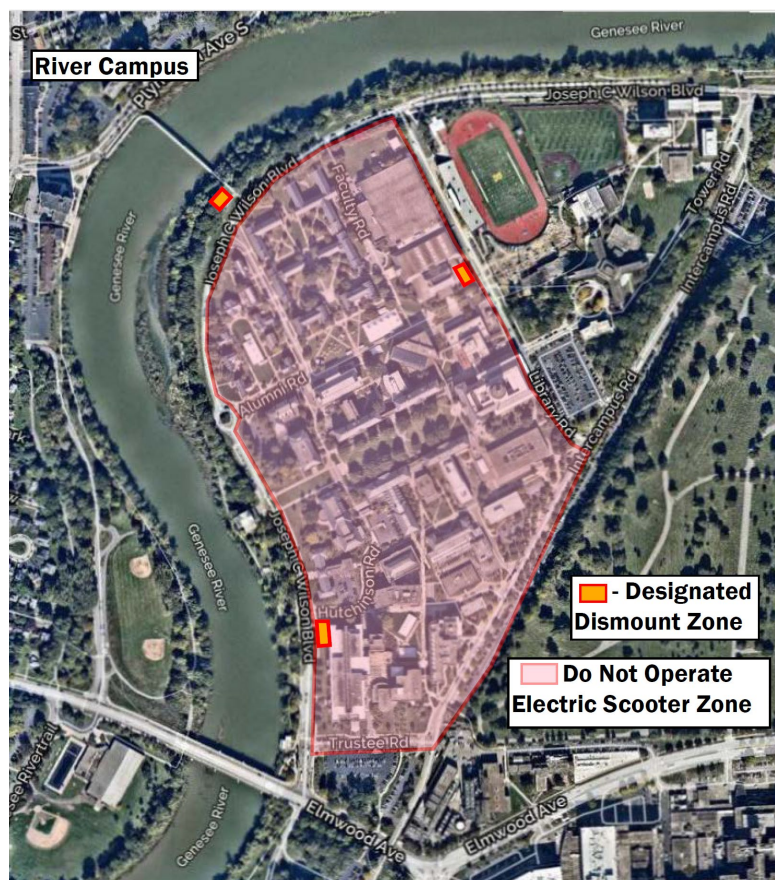
Riders should always adhere to New York State law and other safety guidelines when operating an electronic scooter. More information may be found at: <https://dmv.ny.gov/registration/electric-scooters-and-bicycles-and-other-unregistered-vehicles> .

This policy is subject to review following each spring semester.

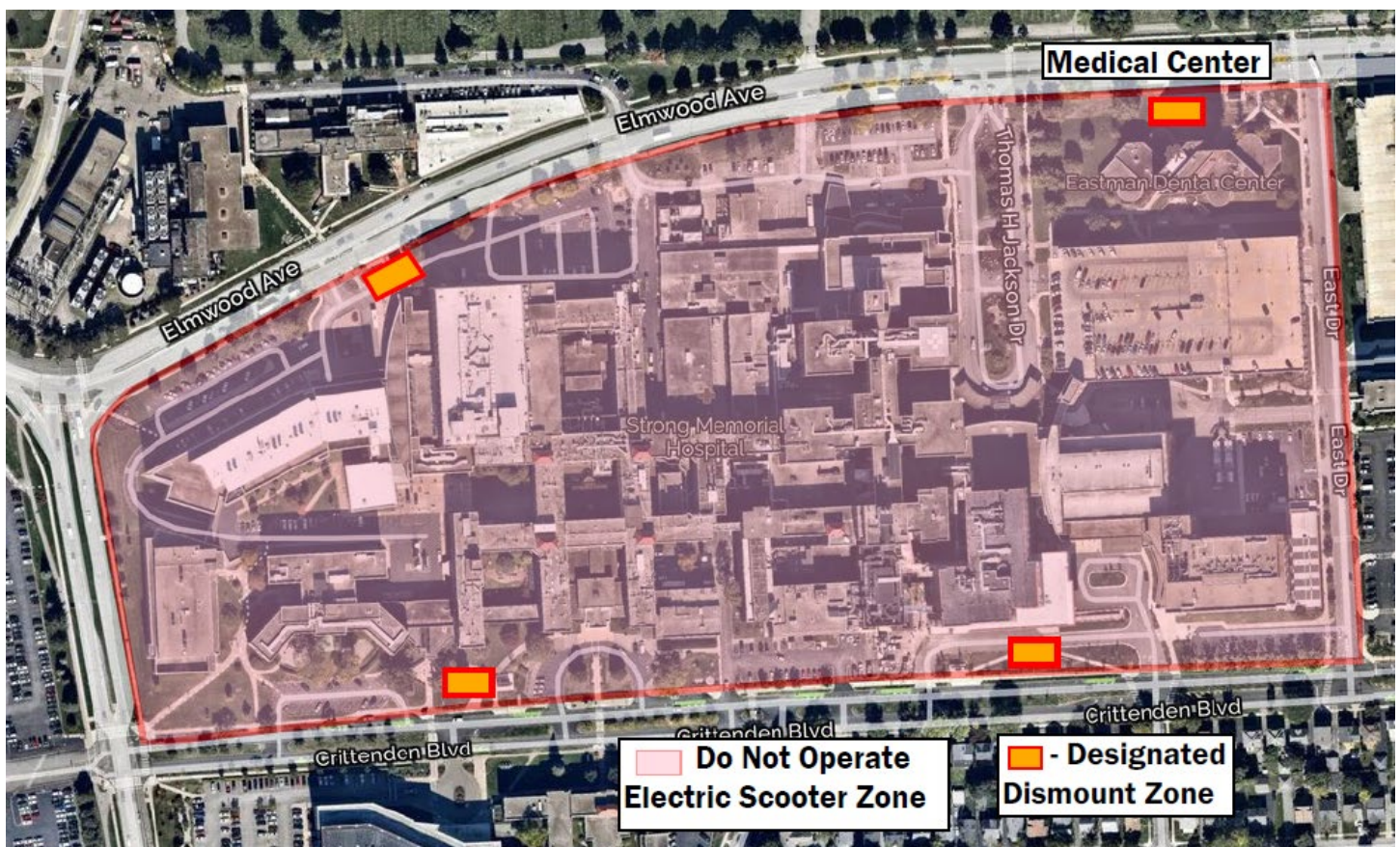
Exhibit A

Campus Maps

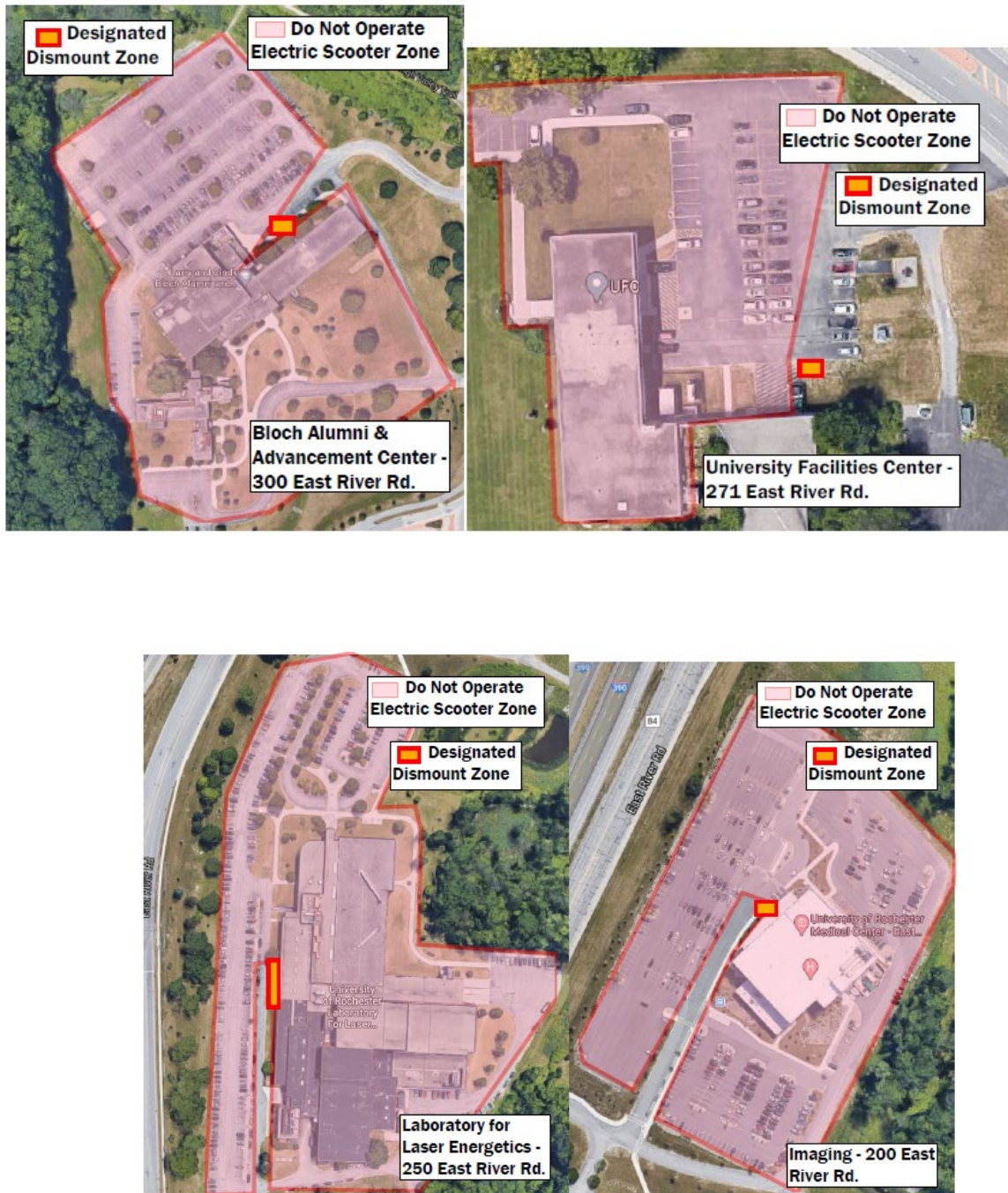
River Campus:



Medical Center:



South Campus:





Eastman School of Music:

