

University of Rochester

Fact Book 2004-05



This Fact Book **OPEN** to the Public
Updated: December 17, 2004

<http://www.rochester.edu/provost/ir/05OPENFACTBOOK.pdf>

Contents

Accreditation
Organization
Space
Degrees
Certificates
Admissions
Enrollment
Majors
Credit Hours
Section Size
Faculty
Staff

Office of the Provost
Institutional Research
205 Wallis Hall
Rochester, NY 14627-0021
585-275-2806

E-mail: sallyann.hart@rochester.edu
© 2004 University of Rochester

University of Rochester

Fact Book 2004-05

<http://www.rochester.edu/provost/ir/05OPENFACTBOOK.pdf>

Table of Contents

<u>Subject</u>	<u>Time Covered</u>	<u>Page</u>
Table of Contents	--	2
Accreditation	--	3
Organization	1 Year	4
Space	10 Years	5
Degrees Conferred	10 Years	6
Degrees by Major	3 Years	7
Certificates	3 Years	12
Admissions	10 Years	13
Enrollment by School	10 Years	14
Enrollment by School and Full-time/Part-time Status	3 Years	15
Enrollment, Gender and Ethnicity	1 Year	18
Enrollment, Geographic Origins	1 Year	19
Enrollment, Majors	3 Years	20
Courses, Credit Hours	3 Years	25
Courses, Section Size	1 Year	28
Faculty by School	10 Years	32
Faculty by Department	3 Years	33
Staff	1 Year	35

UNIVERSITY OF ROCHESTER

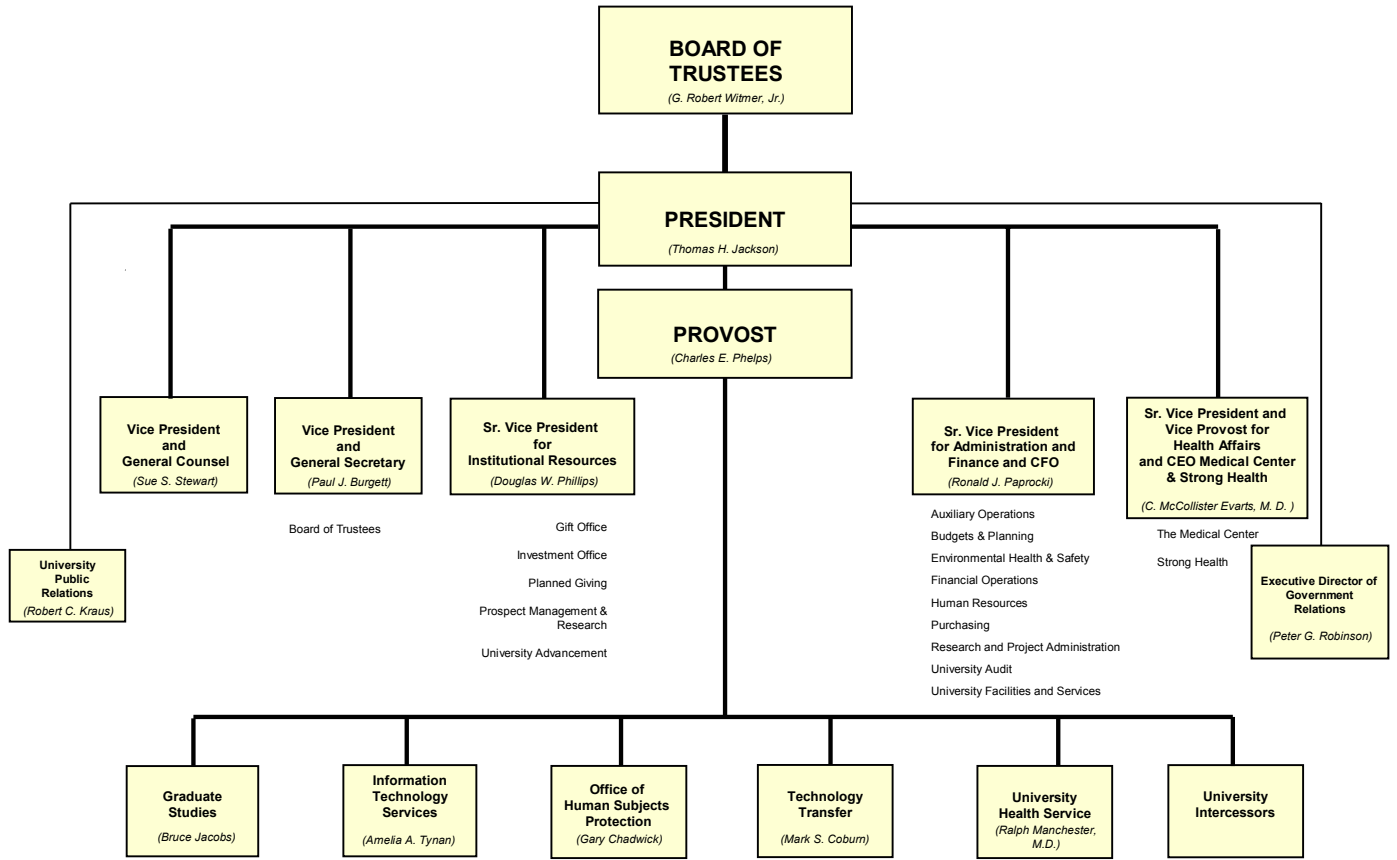
ACCREDITATION

The University of Rochester is accredited by the **Middle States Commission on Higher Education**, <http://www.msache.org>, and the **New York State Board of Regents**, <http://www.regents.nysed.gov/>.

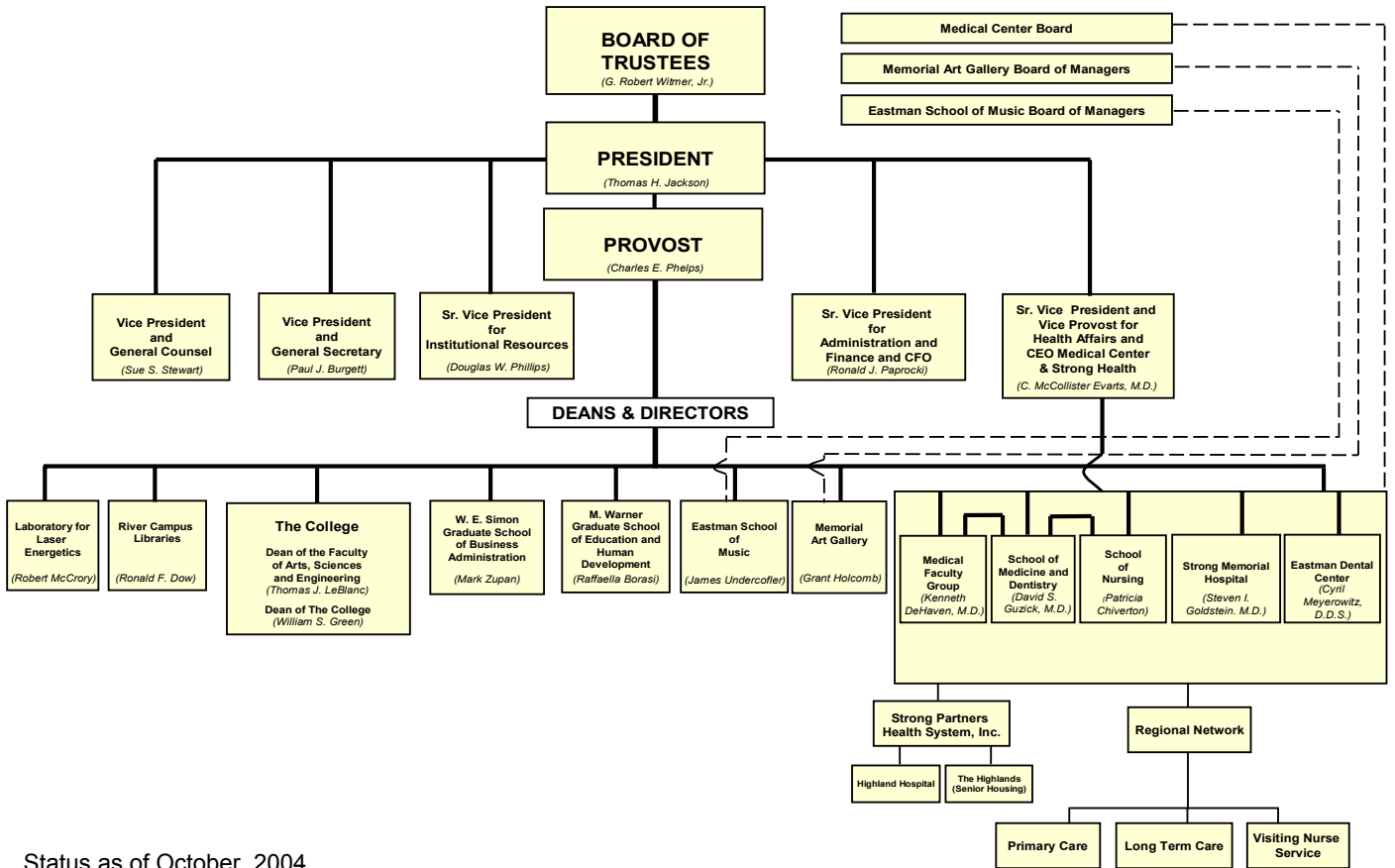
Programs within the University's Schools are accredited by the following agencies:

- Accreditation Board of Engineering and Technology, Inc.
- Accreditation Council on Graduate Medical Education
- American Academy of Microbiology
- American Assembly of Collegiate Schools of Business
- American Association for Marriage and Family Therapy
- American Dental Association
- American Psychological Association
- Council for Accreditation of Counseling and Related Educational Programs
- Council on Education for Public Health
- Liaison Committee on Medical Education
- National Association of Schools of Music
- National League for Nursing Accrediting Commission

UNIVERSITY OF ROCHESTER
Central Administrative and Support Services



UNIVERSITY OF ROCHESTER
Programs and Divisions



UNIVERSITY OF ROCHESTER
Size of Campus

	1994-95	1995-96	1996-97	1997-98	1998-99	1999-2000	2000-01	2001-02	2002-03	2003-04
Campus	Buildings	Buildings	Buildings	Buildings	Buildings	Buildings	Buildings	Buildings	Buildings	Buildings
River Campus	61	61	55	54	54	54	55	55	55	55
Medical Center	19	21	11	11	12	15	15	18	18	18
South Campus	37	37	55	55	55	55	55	55	59	59
Eastman School & MAG	9	8	8	8	8	8	8	9	10	10
Mt. Hope Campus*	7	8	10	10	10	10	10	10	8	8
Off Campus*	-	-	5	5	5	5	5	6	2	2
UNIVERSITY TOTAL	133	135	144	143	144	147	148	153	152	152

	1994-95	1995-96	1996-97	1997-98	1998-99	1999-2000	2000-01	2001-02	2002-03	2003-04
Campus	Gross Sq. Ft.	Gross Sq. Ft.	Gross Sq. Ft.	Gross Sq. Ft.	Gross Sq. Ft.	Gross Sq. Ft.	Gross Sq. Ft.	Gross Sq. Ft.	Gross Sq. Ft.	Gross Sq. Ft.
River Campus	2,649,830	2,721,764	2,701,989	2,736,853	2,732,791	2,797,970	3,476,917	3,559,028	3,545,144	3,551,925
Medical Center	3,075,168	3,808,231	3,568,415	3,622,862	3,671,545	3,927,449	4,713,086	4,976,951	4,838,345	4,852,337
South Campus	628,400	648,034	900,669	919,177	919,177	913,289	1,067,530	1,094,888	1,111,007	1,110,593
Eastman School & MAG	441,089	441,395	441,395	443,011	443,011	443,011	530,729	540,161	667,372	668,943
Mt. Hope Campus*	122,939	123,094	134,697	189,910	189,910	170,124	194,971	202,918	198,379	198,363
Off Campus*	-	-	20,907	20,907	20,907	20,754	22,279	25,623	4,087	4,087
UNIVERSITY TOTAL	6,917,426	7,742,518	7,768,072	7,932,720	7,977,341	8,272,597	10,005,512	10,399,569	10,364,334	10,386,247

Campus Inclusions (2003-04 definitions):

River Campus is the primary campus for The College, Simon School (Graduate Business) and Warner School (Graduate Education).

Medical Center reports all buildings including Annex, Helen Wood Hall, School of Medicine and Dentistry, Strong Memorial Hospital, Ambulatory Care Facility, Parking Garage, Goler House, Central Utilities, Eastman Dental Center, Kornberg Medical Research, Levine Pavillion, Autoclave Bldg.

South Campus includes Nuclear Structure Research Laboratory, Laboratory for Laser Energetics, Center for Optoelectronics and Imaging, River Road Buildings, Graduate Living Center, University Park, Whipple Park, Intercampus Drive.

Eastman Campus includes all Eastman buildings and Eastman Commons; Memorial Art Gallery includes Cutler Union.

Mt. Hope Includes Towne House, Towne House West, and 575, 590, 668, 685, 1351, 1510 Mt. Hope Ave.

Buildings Off Campus are Mees Observatory, Gannett House.

*Mt. Hope Campus and Off Campus data were combined and reported as "Miscellaneous" prior to 1996-97

Source: University Facilities

UNIVERSITY OF ROCHESTER Degrees Conferred

Bachelors

	1994-95	1995-96	1996-97	1997-98	1998-99	1999-00	2000-01	2001-02	2002-03	2003-04
Arts & Sciences	914	930	840	903	852	842	750	778	893	838
Engineering & Applied Sciences	150	146	137	95	104	106	95	135	153	144
The College Subtotal	1,064	1,076	977	998	956	948	845	913	1,046	982
University College*	1	2	-	1	-	-	1	-	-	-
Eastman School of Music	109	97	102	99	119	101	90	121	118	108
School of Nursing	79	93	85	101	64	65	57	60	53	84
University Total	1,253	1,268	1,164	1,199	1,139	1,114	993	1,094	1,217	1,174

Masters

	1994-95	1995-96	1996-97	1997-98	1998-99	1999-00	2000-01	2001-02	2002-03	2003-04
Arts & Sciences	182	135	177	155	128	147	126	99	103	125
Engineering & Applied Sciences	82	72	79	58	53	59	57	67	54	93
The College Subtotal	264	207	256	213	181	206	183	166	157	218
Simon Graduate School of Business	362	401	408	427	470	489	434	421	450	406
Warner Graduate School of Education & Human Development	84	73	84	96	63	55	53	61	71	64
Eastman School of Music	73	107	80	97	96	83	87	92	102	102
School of Medicine & Dentistry	66	65	66	82	79	74	84	61	97	92
School of Nursing	73	61	66	67	52	41	49	30	39	44
University Total	922	914	960	982	941	948	890	831	916	926

Doctorates

	1994-95	1995-96	1996-97	1997-98	1998-99	1999-00	2000-01	2001-02	2002-03	2003-04
Arts & Sciences	119	130	98	105	79	95	76	67	71	79
Engineering & Applied Sciences	25	39	31	28	31	30	30	16	24	24
The College Subtotal	144	169	129	133	110	125	106	83	95	103
Simon Graduate School of Business	5	5	7	7	2	4	3	7	4	7
Warner Graduate School of Education & Human Development	13	15	8	12	4	7	14	9	5	6
Eastman School of Music	35	26	29	26	26	36	24	44	33	30
School of Medicine & Dentistry	135	137	123	143	138	136	130	147	129	159
<i>Subtotal Doctorates</i>	<i>40</i>	<i>42</i>	<i>37</i>	<i>39</i>	<i>39</i>	<i>34</i>	<i>45</i>	<i>38</i>	<i>49</i>	<i>56</i>
<i>Subtotal MD's</i>	<i>95</i>	<i>95</i>	<i>92</i>	<i>104</i>	<i>99</i>	<i>102</i>	<i>85</i>	<i>109</i>	<i>80</i>	<i>103</i>
School of Nursing	5	2	3	3	5	5	4	4	4	7
University Total	337	354	299	324	285	313	281	294	270	312

All Degrees

	1994-95	1995-96	1996-97	1997-98	1998-99	1999-00	2000-01	2001-02	2002-03	2003-04
Arts & Sciences	1,215	1,195	1,115	1,163	1,059	1,084	952	944	1,067	1,042
Engineering & Applied Sciences	257	257	247	181	188	195	182	218	231	261
The College Subtotal	1,472	1,452	1,362	1,344	1,247	1,279	1,134	1,162	1,298	1,303
Simon Graduate School of Business	367	406	415	434	472	493	437	428	454	413
Warner Graduate School of Education & Human Development	97	88	92	108	67	62	67	70	76	70
University College	1	2	-	1	-	-	1	-	-	-
Eastman School of Music	217	230	211	222	241	220	201	257	253	240
School of Medicine & Dentistry	201	202	189	225	217	210	214	208	226	251
School of Nursing	157	156	154	171	121	111	110	94	96	135
University Total	2,512	2,536	2,423	2,505	2,365	2,375	2,164	2,219	2,403	2,412

*University College no longer exists. The degrees granted represent the final program completers.

Source: Student Information System

UNIVERSITY OF ROCHESTER
Degrees Conferred - Undergraduate Majors Completed
 By School, Double Majors Counted Twice*

2001-02 2002-03 2003-04

THE COLLEGE

Arts & Sciences

African & African-American Studies	-	2	2
American Sign Language	8	6	9
Anthropology	12	10	11
Art & Art History	11	12	20
Art History	7	6	8
Studio Arts	4	6	12
Biological Sciences	79	98	80
Biochemistry	7	14	7
Cell & Development	8	9	13
Ecology & Evol Biol	8	6	10
Microbiology	15	25	17
Molecular Genetics	13	17	11
Neuroscience	28	27	22
Biology	45	66	64
Brain & Cognitive Science	21	23	20
Chemistry	20	17	16
Clinical & Social Psychology	128	142	142
Cognitive Science	2	2	-
Computer Science	30	46	51
Earth & Environmental Sciences	12	12	10
Biology-Geology	2	-	-
Environmental Sciences	4	5	1
Environmental Studies	5	2	-
Geological Sciences	1	5	9
Economics	142	164	127
English	54	65	60
Film Studies	15	7	11
Film and Media Studies	15	7	11
Film Studies	-	-	-
Health & Society	35	36	30
History	62	48	53
Interdepartmental	8	10	11
Linguistics	7	4	6
Mathematics	39	56	55
Applied Mathematics	2	13	19
Computer Science:Mathematics	-	-	-
Mathematics	36	43	35
Mathematics-Statistics	1	-	1
Modern Languages & Cultures	34	49	33
Comparative Literature	-	1	-
French	5	10	8
German	2	4	3
Japanese	8	11	4
Russian	5	4	4
Spanish	14	19	14
Music	3	11	8
Philosophy	12	8	7
Physics and Astronomy	21	22	14
Physics	18	15	12
Physics and Astronomy	3	7	2
Political Science	102	107	109
Religion & Classics	25	43	38
Classics	2	5	2
Religious Studies	23	38	36
Russian Studies	3	-	4
Statistics	8	12	8
Women's Studies	4	5	3
Other: General Science, retroactive	-	1	-
SUBTOTAL	942	1,084	1,002

UNIVERSITY OF ROCHESTER
Degrees Conferred - Undergraduate Majors Completed
 By School, Double Majors Counted Twice*

2001-02	2002-03	2003-04
---------	---------	---------

THE COLLEGE

School of Engineering and Applied Sciences

Biomedical Engineering	31	36	37
Chemical Engineering	34	32	17
Electrical and Computer Engineering	-	24	35
Electrical Engineering	28	5	-
Engineering Science	-	1	4
Geomechanics	-	1	2
Interdepartmental Engineering	-	1	2
Mechanical Engineering	21	28	23
Optics	21	25	24
SUBTOTAL	135	153	144

THE COLLEGE SUBTOTAL

1,077	1,237	1,146
-------	-------	-------

Eastman School of Music

Applied Music	109	97	89
Composition	3	6	5
Jazz Studies & Contemporary Media	3	11	5
Music Education - General	1	3	1
Music Education - Instrumental	8	9	17
Music Education - Vocal	3	2	5
Music Theory	-	1	2
Musical Arts	1	-	2
SUBTOTAL	128	129	126

School of Nursing

60	53	84
----	----	----

TOTAL UNIVERSITY

1,265	1,419	1,356
-------	-------	-------

*Totals on this table are greater than the total number of degrees conferred because double majors are reported here.
 The University awards the following Bachelor's Degrees: BA, BS, BM

Source: Student Information System

UNIVERSITY OF ROCHESTER
Degrees Conferred - Graduate Majors Completed
By School, Double Majors Counted Twice*

	2001-02		2002-03		2003-04	
	Mast.	Doc.	Mast.	Doc.	Mast.	Doc.
THE COLLEGE - Arts and Sciences						
Biology	11	2	5	7	5	6
Brain & Cognitive Sciences	2	4	6	7	4	2
Chemistry	17	8	10	13	21	10
Clinical & Social Psychology	8	6	6	2	8	10
Computer Science	8	5	11	7	7	10
Earth & Environ Sciences (Geological)	4	3	2	1	2	2
Economics	12	9	12	9	20	4
English	7	3	16	7	18	8
History	1	6	1	3	4	4
Interdepartmental Studies	-	-	-	-	1	-
Linguistics	-	-	1	1	-	-
Mathematics	5	1	5	-	7	4
Mathematics	4	1	5	-	7	4
Mathematics - Statistics	1	-	-	-	-	-
Modern Languages & Cultures	1	3	1	-	1	1
Comparative Literature	1	3	1	-	1	1
Philosophy	2	1	2	1	4	1
Physics & Astronomy	13	7	11	8	18	12
Physics	13	6	11	7	18	12
Physics & Astronomy	-	1	-	1	-	-
Political Science	2	3	7	4	5	2
Visual and Cultural Studies	6	7	7	4	1	3
SUBTOTAL	99	68	103	74	126	79
THE COLLEGE - School of Engineering and Applied Sciences						
Biomedical Engineering	10	1	10	3	11	1
Chemical Engineering	8	-	4	-	24	1
Electrical & Computer Engineering	-	-	1	-	6	-
Electrical Engineering	22	3	12	7	10	10
Materials Science	2	2	1	3	6	1
Mechanical Engineering	14	5	8	2	15	1
Optics	11	5	18	9	21	10
SUBTOTAL	67	16	54	24	93	24
THE COLLEGE TOTAL	166	84	157	98	219	103
Simon Graduate School of Business Administration						
Master of Science	14	-	25	-	19	-
Business Administration	262	7	298	4	277	7
Business Admin. - Executive Development	50	-	39	-	34	-
Business Admin. - Bern, Switzerland	48	-	50	-	54	-
Business Admin. - Nijenrode, Netherlands	47	-	38	-	22	-
SUBTOTAL	421	7	450	4	406	7

UNIVERSITY OF ROCHESTER
Degrees Conferred - Graduate Majors Completed
By School, Double Majors Counted Twice*

	2001-02		2002-03		2003-04	
	Mast.	Doc.	Mast.	Doc.	Mast.	Doc.
Warner Graduate School of Education and Human Development						
C&HD: Counseling MS/EDD	-	-	-	-	-	1
Counseling & Human Devel, CounsTrack	4	-	-	-	-	-
Counseling & Human Develop	6	1	3	1	-	-
Curriculum Elementary	8	-	8	-	1	-
Curriculum General	7	-	2	-	-	-
Curriculum Secondary English	5	-	2	-	1	-
Curriculum Secondary for Lang	3	-	-	-	-	-
Curriculum Secondary Math	-	-	1	-	-	-
Curriculum Secondary Science	6	-	-	-	-	-
Curriculum Secondary Soc Stud	3	-	4	-	1	-
Developmental Disorders	-	-	-	-	-	-
Education	-	-	-	-	-	-
Education Administration	2	1	1	2	1	-
Higher Education	4	2	1	1	-	1
Human Devel General	5	-	1	-	-	-
Human Devel In Ed Contexts	-	2	-	-	-	1
School Guidance	1	-	-	-	-	-
Teaching Curriculum	-	2	-	-	-	-
Teaching Curriculum & Change	-	1	-	1	-	2
Teaching in English	1	-	1	-	-	-
Teaching in History	2	-	-	-	-	-
TESOL	4	-	-	-	-	-
MAT English (7-12)	-	-	-	-	1	-
MS Administration (CATH)	-	-	-	-	2	-
MS Administration (GEN)	-	-	1	-	-	-
MS Administration (SAS)	-	-	2	-	3	-
MS Biology (5-12)	-	-	-	-	1	-
MS Biology (7-12)	-	-	4	-	2	-
MS Chemistry (5-12)	-	-	1	-	-	-
MS Chemistry (7-12)	-	-	2	-	-	-
MS Community Counseling	-	-	2	-	5	-
MS Community Counseling (3+2)	-	-	1	-	-	-
MS Dis. Elementary (1-6) 2nd C	-	-	-	-	1	-
MS Early Childhood/Inclusion B2	-	-	-	-	1	-
MS Elementary (1-6)	-	-	-	-	5	-
MS English (7-12)	-	-	-	-	4	-
MS Higher Ed	-	-	4	-	5	-
MS Human Development	-	-	6	-	1	-
MS in Adol. Ed.: Chemistry	-	-	-	-	1	-
MS Literacy B-6	-	-	-	-	1	-
MS Physics (7-12)	-	-	1	-	-	-
MS School Counseling	-	-	6	-	16	-
MS School Counseling (3+2)	-	-	2	-	-	-
MS School Counseling (Comm)	-	-	1	-	1	-
MS Spanish (7-12)	-	-	3	-	2	-
MS Teaching & Curriculum	-	-	7	-	7	-
MS TESOL	-	-	-	-	1	-
MS TESOL	-	-	4	-	-	-
PHD Counseling	-	-	-	-	-	1
SUBTOTAL	61	9	71	5	64	6
Eastman School of Music						
Composition	-	4	4	-	4	-
Conducting	4	3	1	2	7	1
Jazz Studies & Contemp Media	4	-	6	-	3	-
Jazz Studies & Contemp Media-Writing	-	-	3	-	2	-
Music Education	13	2	13	2	9	2
Music Theory	1	10	7	-	3	6
Musicology	4	1	3	1	2	4
Performance & Literature	65	24	62	25	66	18
Piano Accompanying & Chamber Music	1	-	1	3	2	-
Theory Pedagogy	1	-	3	-	5	-
SUBTOTAL	93	44	103	33	103	31

UNIVERSITY OF ROCHESTER
Degrees Conferred - Graduate Majors Completed
By School, Double Majors Counted Twice*

	2001-02		2002-03		2003-04	
	Mast.	Doc.	Mast.	Doc.	Mast.	Doc.
School of Medicine and Dentistry						
Anatomy	2	-	-	2	-	-
Biochemistry	8	3	6	4	14	10
Biophysics	4	2	3	6	4	5
Dental Science	-	-	-	-	2	-
Environmental Studies	-	-	-	-	-	-
Genetics	2	-	-	2	6	3
Health Services Research	-	4	-	2	-	1
Industrial Hygiene	-	-	-	-	-	-
Marriage & Family Therapy	2	-	-	-	4	-
Microbiology & Immunology	13	12	24	10	14	10
Neuroscience	2	6	8	3	3	5
Pathology	4	2	13	8	5	13
Pharmacology	4	4	8	6	6	5
Physiology	1	1	-	-	-	-
Public Health	11	-	23	-	6	-
Public Health - Clinical Investigation	-	-	-	-	18	-
Statistics	2	2	3	4	2	-
Toxicology	6	2	9	2	8	4
SUBTOTAL without MDs	61	38	97	49	92	56
MD's (First Professional)	-	109	-	80	-	103
SUBTOTAL with MDs	61	147	97	129	92	159
School of Nursing						
Acute Cardio-Pulmonary Nurse Practitioner	-	-	-	-	-	-
Acute Care Oncology Nurse Practitioner	-	-	-	-	-	-
Acute Care Cardiovascular	-	-	4	-	2	-
Acute Critical Care Nurse Practitioner	5	-	2	-	3	-
Adult Nurse Practitioner	8	-	10	-	8	-
Care of Children & Families	7	-	5	-	11	-
Family Nurse Practitioner	6	-	10	-	12	-
Neonatal Nurse Practitioner	1	-	1	-	1	-
Nurse Midwifery	-	-	-	-	-	-
Nursing	-	4	-	4	-	7
Ped Nur Prac/Psych Mental Health	-	-	1	-	1	-
Psych Mental Health	3	-	6	-	6	-
Women's Health Care	-	-	-	-	-	-
SUBTOTAL	30	4	39	4	44	7
TOTAL UNIVERSITY	832	295	917	273	928	313

*Totals on this table are greater than the total number of degrees conferred because double majors are reported here.

The University awards the following Master's and Doctorate degrees:

MA, MS, MM, MPH, MBA, MAT, PhD, EdD, DMA

Source: Student Information System

UNIVERSITY OF ROCHESTER
Certificates Conferred

	2001-02	2002-03	2003-04
With Bachelor's Degrees			
Actuarial Studies	7	8	6
Asian Studies	1	-	-
Biotechnology	1	3	3
International Relations	17	9	11
Management Studies	134	163	145
Mathematical Modeling in Political Science & Economics	-	1	2
Polish & Central European Studies	1	3	2
Total	161	187	169

Post Master's Certificates

Dentistry	40	41
Nursing	10	11
Total	50	52

Sources: College Center for Academic Support; School of Nursing, Eastman Dental Center

Certificates Conferred, Federal Reporting

	<u>2003-04</u>
Postbaccalaureate certificates	
Music	9
Post-Masters certificates	
Nursing	4
First-Professional certificates	
Dentistry	38
Total	51

Source: Institutional Research, as reported for IPEDS

UNIVERSITY OF ROCHESTER
Admissions Activity

Fall	1995	1996	1997	1998	1999	2000	2001	2002	2003	2004
------	------	------	------	------	------	------	------	------	------	------

College: First Time Full-time Freshmen (Arts & Sciences, Engineering & Applied Sciences)

Number of Applicants	8,385	9,057	9,147	8,782	8,656	10,082	9,579	8,682	10,486	11,099
Number Offered	5,304	4,854	5,166	5,189	5,714	5,086	5,041	4,846	5,096	5,292
Entered	1,085	904	799	968	1,087	930	1,008	934	976	971

University: First Time Full-time Freshmen (College and Eastman School of Music)

Number of Applicants	9,195	9,970	9,983	9,760	9,623	11,133	10,602	9,606	11,381	12,023
Number Offered	5,608	5,138	5,402	5,771	5,975	5,335	5,294	5,091	5,385	5,541
Entered	1,223	1,037	908	1,077	1,221	1,051	1,117	1,063	1,124	1,091

University: Graduate Students

Number of Applicants	6,678	6,822	6,839	7,103	6,785	7,798	7,704	9,229	10,020	6,829
Number Offered	1,938	1,956	1,908	1,902	1,723	1,855	1,945	1,804	1,981	1,785
Entered	985	977	945	947	971	860	1,007	911	997	952

First Professional Students (M.D. Degree)

Number of Applicants	3,959	4,089	3,914	7,018	5,865	5,111	4,305	3,845	3,969	3,975
Number Offered	240	248	276	248	288	252	280	281	275	272
Entered	99	99	100	100	100	98	100	100	100	100

Source: Admissions Offices; Graduate Dean

UNIVERSITY OF ROCHESTER
Enrollment - Total (Full-time and Part-time Students) Fall Semester

Undergraduate

	1995-96	1996-97	1997-98	1998-99	1999-00	2000-01	2001-02	2002-03	2003-04	2004-05
Arts & Sciences*	4,197	3,957	3,695	3,532	3,527	3,540	3,690	3,702	3,625	3,629
Engineering & Applied Sciences**	277	220	208	218	208	222	280	269	237	217
The College Subtotal	4,474	4,177	3,903	3,750	3,735	3,762	3,970	3,971	3,862	3,846
Eastman School of Music	493	491	462	468	485	481	475	482	480	480
School of Nursing	215	217	189	159	145	143	122	104	119	122
Subtotal	5,182	4,885	4,554	4,377	4,365	4,386	4,567	4,557	4,461	4,448
Non-matriculated	238	159	146	126	135	138	149	173	149	113
Total	5,420	5,044	4,700	4,503	4,500	4,524	4,716	4,730	4,610	4,561

Graduate and Professional Students

	1995-96	1996-97	1997-98	1998-99	1999-00	2000-01	2001-02	2002-03	2003-04	2004-05
Arts & Sciences	826	766	721	660	632	600	638	627	671	650
Engineering & Applied Sciences	270	255	244	248	238	225	220	271	308	298
The College Subtotal	1,096	1,021	965	908	870	825	858	898	979	948
Simon Graduate School of Business	682	688	748	764	780	727	744	804	732	572
Warner Graduate School of Education & Human Development	226	244	236	204	226	259	274	293	310	333
Eastman School of Music	345	341	355	329	315	331	334	359	392	387
School of Medicine & Dentistry, M.D.	402	405	419	419	412	412	418	417	439	424
School of Medicine & Dentistry, M.S. & Ph.D.	357	347	357	342	371	380	433	451	484	517
School of Nursing	232	241	199	171	158	157	140	149	129	156
Subtotal	3,340	3,287	3,279	3,137	3,132	3,091	3,201	3,371	3,465	3,337
Non-matriculated	829	530	550	605	515	582	573	524	534	555
Total	4,169	3,817	3,829	3,742	3,647	3,673	3,774	3,895	3,999	3,892

All

	1995-96	1996-97	1997-98	1998-99	1999-00	2000-01	2001-02	2002-03	2003-04	2004-05
Arts & Sciences	5,023	4,723	4,416	4,192	4,159	4,140	4,328	4,329	4,296	4,279
Engineering & Applied Sciences	547	475	452	466	446	447	500	540	545	515
The College Subtotal	5,570	5,198	4,868	4,658	4,605	4,587	4,828	4,869	4,841	4,794
Simon Graduate School of Business	682	688	748	764	780	727	744	804	732	572
Warner Graduate School of Education & Human Development	226	244	236	204	226	259	274	293	310	333
Eastman School of Music	838	832	817	797	800	812	809	841	872	867
School of Medicine & Dentistry, M.D.	402	405	419	419	412	412	418	417	439	424
School of Medicine & Dentistry, M.S. & Ph.D.	357	347	357	342	371	380	433	451	484	517
School of Nursing	447	458	388	330	303	300	262	253	248	278
University, Subtotal	8,522	8,172	7,833	7,514	7,497	7,477	7,768	7,928	7,926	7,785
Non-matriculated	1,067	689	696	731	650	720	722	697	683	668
University Total	9,589	8,861	8,529	8,245	8,147	8,197	8,490	8,625	8,609	8,453

*Older dates may include a small number of students enrolled in University College (a unit which has been phased out).

**Distribution of Engineering majors in the College has been revised from prior reporting.

This table shows only Junior and Senior Engineering majors in Engineering & Applied Sciences.

Source: Student Information System

UNIVERSITY OF ROCHESTER

Enrollment - By School, Showing Full-time, Part-time Status

UNDERGRADUATES	Fall 2002			Fall 2003			Fall 2004		
	FT	PT	Total	FT	PT	Total	FT	PT	Total
Arts & Sciences	3,670	32	3,702	3,586	39	3,625	3,589	40	3,629
Engineering & Applied Sciences*	268	1	269	235	2	237	213	4	217
Simon School									
Warner School									
SUBTOTAL RIVER CAMPUS	3,938	33	3,971	3,821	41	3,862	3,802	44	3,846
Eastman School of Music	478	4	482	478	2	480	479	1	480
Medicine & Dentistry (MD)									
Medicine & Dentistry (Other)									
Nursing	23	81	104	55	64	119	59	63	122
SUBTOTAL MATRICULATED	4,439	118	4,557	4,354	107	4,461	4,340	108	4,448
Non-matriculated	9	164	173	7	142	149	7	106	113
TOTAL UNIVERSITY	4,448	282	4,730	4,361	249	4,610	4,347	214	4,561

*Engineering is revised from prior reporting to include only Juniors & Seniors

UNDERGRADUATES	Spring 2003			Spring 2004		
	FT	PT	Total	FT	PT	Total
Arts & Sciences	3,567	53	3,620	3,450	38	3,488
Engineering & Applied Sciences	246	1	247	245	7	252
Simon School						
Warner School						
SUBTOTAL RIVER CAMPUS	3,813	54	3,867	3,695	45	3,740
Eastman School of Music	452	6	458	452	1	453
Medicine & Dentistry (MD)						
Medicine & Dentistry (Other)						
Nursing	25	77	102	50	68	118
SUBTOTAL MATRICULATED	4,290	137	4,427	4,197	114	4,311
Non-matriculated	6	127	133	4	111	115
TOTAL UNIVERSITY	4,296	264	4,560	4,201	225	4,426

Source: UR-10 Part IIA: 10/11/02, 11/12/03, 10/8/04 for Fall; UR-20 Part IIA: 2/21/03, and 2/20/04 for Spring.

UNIVERSITY OF ROCHESTER

Enrollment - By School, Showing Full-time, Part-time Status

GRADUATE STUDENTS	Fall 2002			Fall 2003			Fall 2004		
	FT	PT	Total	FT	PT	Total	FT	PT	Total
Arts & Sciences	618	9	627	651	20	671	637	13	650
Engineering & Applied Sciences	253	18	271	283	25	308	271	27	298
Simon School	640	164	804	593	139	732	457	115	572
Warner School	85	208	293	107	203	310	116	217	333
SUBTOTAL RIVER CAMPUS	1,596	399	1,995	1,634	387	2,021	1,481	372	1,853
Eastman School of Music	335	24	359	362	30	392	355	32	387
Medicine & Dentistry (MD)	417	-	417	439	-	439	424	-	424
Medicine & Dentistry (Other)	361	90	451	405	79	484	432	85	517
Nursing	46	103	149	40	89	129	40	116	156
SUBTOTAL MATRICULATED	2,755	616	3,371	2,880	585	3,465	2,732	605	3,337
Non-matriculated (includes Eastman Dental Center)	31	493	524	40	521	561	57	498	555
TOTAL UNIVERSITY	2,786	1,109	3,895	2,920	1,106	4,026	2,789	1,103	3,892

GRADUATE STUDENTS	Spring 2003			Spring 2004		
	FT	PT	Total	FT	PT	Total
Arts & Sciences	607	7	614	622	20	642
Engineering & Applied Sciences	194	16	210	269	24	293
Simon School - Winter Quarter	760	178	938	645	151	796
Warner School	74	200	274	107	205	312
SUBTOTAL RIVER CAMPUS	1,635	401	2,036	1,643	400	2,043
Eastman School of Music	285	48	333	338	26	364
Medicine & Dentistry (MD)	426	-	426	437	-	437
Medicine & Dentistry (Other)	334	87	421	393	86	479
Nursing	45	110	155	77	84	161
SUBTOTAL MATRICULATED	2,725	646	3,371	2,888	596	3,484
Non-matriculated (includes Eastman Dental Center)	37	470	507	32	398	430
TOTAL UNIVERSITY	2,762	1,116	3,878	2,920	994	3,914

GRADUATE STUDENTS	Simon Spring Qtr 2003			Simon Spring Qtr 2004		
	FT	PT	Total	FT	PT	Total
Simon School - Spring Quarter	740	164	904	655	151	806
Non-matriculated - Simon Spring Quarter	-	113	113	-	110	110
TOTAL UNIVERSITY	740	277	1,017	655	261	916

Source: UR-10 Part IIA: 10/11/02, 11/12/03, 10/8/04 for Fall; UR-20 Part IIA: 2/21/03, and 2/20/04 for Spring.

Simon Spring Quarter UR16B & 26B, Part IV & V: EOT 6/03, 5/28/04.

Note that Simon School Fall Quarter is not as far into its quarter session as other schools are into the semester calendar. Therefore, numbers are not necessarily representative of the outcome of Simon Fall quarterly activity. However, adjustments have been made to show complete enrollments for Simon Winter and Spring Quarters.

UNIVERSITY OF ROCHESTER

Enrollment - By School, Showing Full-time, Part-time Status

ALL STUDENTS	Fall 2002			Fall 2003			Fall 2004		
	FT	PT	Total	FT	PT	Total	FT	PT	Total
Arts & Sciences	4,288	41	4,329	4,237	59	4,296	4,226	53	4,279
Engineering & Applied Sciences	521	19	540	518	27	545	484	31	515
Simon School	640	164	804	593	139	732	457	115	572
Warner School	85	208	293	107	203	310	116	217	333
SUBTOTAL RIVER CAMPUS	5,534	432	5,966	5,455	428	5,883	5,283	416	5,699
Eastman School of Music	813	28	841	840	32	872	834	33	867
Medicine & Dentistry (MD)	417	-	417	439	-	439	424	-	424
Medicine & Dentistry (Other)	361	90	451	405	79	484	432	85	517
Nursing	69	184	253	95	153	248	99	179	278
SUBTOTAL MATRICULATED	7,194	734	7,928	7,234	692	7,926	7,072	713	7,785
Non-matriculated	40	657	697	47	663	710	64	604	668
TOTAL UNIVERSITY	7,234	1,391	8,625	7,281	1,355	8,636	7,136	1,317	8,453

ALL STUDENTS	Spring 2003			Spring 2004		
	FT	PT	Total	FT	PT	Total
Arts & Sciences	4,174	60	4,234	4,072	58	4,130
Engineering & Applied Sciences	440	17	457	514	31	545
Simon School-Winter Quarter	760	178	938	645	151	796
Warner School	74	200	274	107	205	312
SUBTOTAL RIVER CAMPUS	5,448	455	5,903	5,338	445	5,783
Eastman School of Music	737	54	791	790	27	817
Medicine & Dentistry (MD)	426	-	426	437	-	437
Medicine & Dentistry (Other)	334	87	421	393	86	479
Nursing	70	187	257	127	152	279
SUBTOTAL MATRICULATED	7,015	783	7,798	7,085	710	7,795
Non-matriculated	43	597	640	36	509	545
TOTAL UNIVERSITY	7,058	1,380	8,438	7,121	1,219	8,340

ALL SIMON SPRING	Simon Spring Qtr 2003			Simon Spring Qtr 2004		
	FT	PT	Total	FT	PT	Total
Simon School - Spring Quarter	740	164	904	655	151	806
Non-matriculated - Simon Spring Quarter	-	113	113	-	110	110
TOTAL UNIVERSITY	740	277	1,017	655	261	916

Note: Totals include students in Take 5 Program.

UNIVERSITY OF ROCHESTER

Enrolled Students: Declared Ethnic Origin*

FALL 2004	TOTAL		Nonresident alien		Black, non-Hispanic		American Indian/Alaska Native		Asian/Pacific Islander		Hispanic		White, non-Hispanic		Unknown	
	M	W	M	W	M	W	M	W	M	W	M	W	M	W	M	W
	Undergraduates-Full Time															
First-time Freshmen	588	496	24	13	22	18	1	2	47	45	24	21	400	327	70	70
All other Freshmen	8	11	1	2	1	2	-	-	-	1	-	-	4	6	2	-
Sophomores	582	496	31	17	29	27	1	3	68	57	21	33	343	302	89	57
Juniors	552	490	19	15	17	25	1	3	66	56	23	18	343	307	83	66
Seniors	583	535	18	15	15	28	1	1	75	51	15	21	381	341	78	78
Unclassified	6	1	6	1	-	-	-	-	-	-	-	-	-	-	-	-
SUBTOTAL	2,319	2,029	99	63	84	100	4	9	256	210	83	93	1,471	1,283	322	271
Undergraduates-Part Time																
Juniors	14	66	-	-	-	3	-	1	-	-	-	-	13	54	1	8
Seniors	19	10	2	-	1	2	-	-	3	1	-	1	11	6	2	-
Unclassified	23	55	-	1	1	7	-	1	3	2	1	2	16	40	2	2
SUBTOTAL	56	131	2	1	2	12	-	2	6	3	1	3	40	100	5	10
TOTAL Undergraduates	2,375	2,160	101	64	86	112	4	11	262	213	84	96	1,511	1,383	327	281
First Professional																
First-time	46	53	-	-	4	4	-	1	6	21	-	-	32	25	4	2
All others	147	177	-	-	8	19	3	-	25	37	4	6	99	110	8	5
TOTAL First Professional	193	230	-	-	12	23	3	1	31	58	4	6	131	135	12	7
Graduate Students-Full Time																
First-time Masters/Doctoral	160	115	70	49	4	2	-	-	5	10	2	7	60	39	19	8
All others	1,148	848	488	349	21	25	-	1	47	40	27	22	474	369	91	42
Unclassified	12	6	10	3	-	1	-	-	-	-	-	-	-	1	2	1
SUBTOTAL	1,320	969	568	401	25	28	-	1	52	50	29	29	534	409	112	51
Graduate Students-Part Time																
First-time Masters/Doctoral	1	8	-	-	-	1	-	-	-	-	-	1	1	6	-	-
All others	228	368	12	8	11	16	-	3	14	15	4	11	169	292	18	23
Unclassified	193	284	22	14	4	17	1	-	6	10	4	14	135	210	21	19
SUBTOTAL	422	660	34	22	15	34	1	3	20	25	8	26	305	508	39	42
TOTAL Graduates	1,742	1,629	602	423	40	62	1	4	72	75	37	55	839	917	151	93
Total University	4,310	4,019	703	487	138	197	8	16	365	346	125	157	2,481	2,435	490	381

* This report indicates the ethnic origin of students, as reported by the students. Definitions are below.

Numbers 1-5 apply to all except those who are Nonresident aliens.

1. Asian/Pacific Islander: A person having origins in any of the original peoples of the Far East, Southeast Asia, the Indian Subcontinent, or Pacific Islands
2. Black, non-Hispanic: A person having origins in any of the black racial groups of Africa (except those of Hispanic origin)
3. White, non-Hispanic: A person having origins in any of the original peoples of Europe, North Africa, or the Middle East (except those of Hispanic origin)
4. Hispanic: A person of Mexican, Puerto Rican, Cuban, Central or South American, or other Spanish culture or origin, regardless of race
5. American Indian/Alaska Native: A person having origins in any of the original peoples of North America and who maintains cultural identification through tribal affiliation or community recognition
6. Nonresident alien: A person who is not a citizen or national of the United States and who is in this country on a visa or temporary basis and does not have the right to remain indefinitely
7. Race/Ethnicity Unknown: Used only if the student did not select a racial-ethnic designation and the institution finds it impossible to place the student in one of the aforementioned racial/ethnic categories
Note that full-time graduate students, unknown race/ethnicity, includes 1 unknown gender reported with males

Source: IPEDS-EF1 Report. Totals may differ from internal University Student Information System reports.

UNIVERSITY OF ROCHESTER

Geographic Distribution of Full-time Students

FALL 2004 (as of October 8, 2004)

		ALL		Arts & Sciences		Engineering		Simon School	Warner School	Eastman		SMD	Nursing		Eastman Dental*
		UGs	Grads	UGs	Grads	UGs	Grads	Grads	Grads	UGs	Grads	Grads	UGs	Grads	Grads
Middle Atlantic Region	District of Columbia	13	6	13	1	-	1	2	-	-	-	2	-	-	-
	Delaware	8	4	8	3	-	-	-	-	-	1	-	-	-	-
	Maryland	106	15	94	5	3	1	-	-	8	1	8	1	-	-
	New Jersey	228	43	198	9	8	9	10	2	20	9	4	2	-	-
	New York	2,009	597	1,776	113	104	58	119	85	91	34	146	38	33	9
NY % of Total		46%	25%												
	Pennsylvania	242	74	201	28	13	6	10	2	24	14	13	4	1	-
	West Virginia	5	1	3	-	2	-	-	-	-	-	1	-	-	-
New England Region	Connecticut	141	17	116	5	9	3	1	2	16	4	2	-	-	-
	Massachusetts	231	37	207	13	10	3	9	2	14	7	3	-	-	-
	Maine	22	10	18	2	2	1	1	-	2	-	6	-	-	-
	New Hampshire	38	4	30	1	5	-	1	-	3	1	1	-	-	-
	Rhode Island	18	4	16	1	1	-	-	1	1	-	2	-	-	-
	Vermont	28	7	23	4	2	1	-	-	2	1	1	1	-	-
Great Lakes Region	Illinois	100	26	65	7	5	1	5	-	29	9	4	1	-	-
	Indiana	25	7	19	3	1	-	-	-	5	2	2	-	-	-
	Michigan	34	20	19	7	2	3	1	1	13	5	3	-	-	-
	Ohio	133	36	103	16	5	2	4	-	24	8	6	1	-	-
	Wisconsin	29	10	13	4	-	-	-	-	15	4	2	1	-	-
South-eastern Region	Alabama	5	6	2	3	-	-	1	-	3	2	-	-	-	-
	Arkansas	2	2	2	1	-	-	-	-	-	1	-	-	-	-
	Florida	42	23	36	3	1	3	2	-	5	10	5	-	-	-
	Georgia	22	15	9	4	-	1	2	1	13	6	-	-	1	-
	Kentucky	3	6	2	1	-	1	1	1	1	2	-	-	-	-
	Louisiana	9	6	8	-	-	1	-	-	1	3	1	-	-	-
	Mississippi	1	1	1	1	-	-	-	-	-	-	-	-	-	-
	North Carolina	21	17	11	2	-	-	1	-	10	12	2	-	-	-
	South Carolina	10	7	2	4	-	-	1	-	8	-	2	-	-	-
	Tennessee	13	9	9	4	-	-	-	-	4	4	1	-	-	-
	Virginia	51	16	37	6	2	1	2	1	11	6	-	1	-	-
Central Region	Iowa	9	4	4	1	1	-	-	-	4	3	-	-	-	-
	Kansas	4	3	3	-	-	-	1	-	1	1	1	-	-	-
	Minnesota	18	12	12	5	2	-	-	-	4	7	-	-	-	-
	Missouri	24	11	20	5	-	2	1	-	4	2	1	-	-	-
	North Dakota	5	1	3	-	-	-	-	-	2	1	-	-	-	-
	Nebraska	4	3	2	-	1	-	-	-	1	2	1	-	-	-
	South Dakota	3	1	3	-	-	-	-	-	-	1	-	-	-	-
South-western Region	Arizona	11	7	7	1	-	-	1	-	3	2	2	1	1	-
	New Mexico	6	6	3	2	-	1	-	-	3	2	1	-	-	-
	Oklahoma	4	5	3	1	-	-	-	-	1	3	1	-	-	-
	Texas	63	29	44	10	3	1	7	1	16	8	2	-	-	-
Mountain Region	Colorado	27	13	21	4	1	2	-	-	5	6	1	-	-	-
	Idaho	4	3	2	1	-	1	-	-	2	1	-	-	-	-
	Montana	3	1	1	1	-	-	-	-	2	-	-	-	-	-
	Nevada	4	2	3	-	-	-	1	-	1	-	1	-	-	-
	Utah	3	15	1	3	-	-	1	1	1	3	6	1	1	-
	Wyoming	1	1	1	-	-	-	-	-	-	1	-	-	-	-
Pacific Region	Alaska	3	3	2	1	-	1	-	-	1	1	-	-	-	-
	California	101	68	66	26	3	1	16	2	29	12	10	3	-	1
	Hawaii	2	3	2	-	-	-	-	-	-	2	1	-	-	-
	Oregon	18	10	13	5	-	1	1	-	5	3	-	-	-	-
	Washington	39	19	28	4	3	3	5	-	7	3	4	1	-	-
Other	Guam	1	-	1	-	-	-	-	-	-	-	-	-	-	-
	Puerto Rico	4	8	4	1	-	-	-	-	-	1	6	-	-	-
	Virgin Islands	3	-	3	-	-	-	-	-	-	-	-	-	-	-
	Unknown	3	2	3	1	-	1	-	-	-	-	-	-	-	-
	Foreign	366	1,085	276	314	24	159	250	13	63	143	177	3	3	26
	Military Base	20	4	18	-	1	2	-	-	-	1	1	-	-	1
TOTAL	4,342	2,345	3,590	637	214	271	457	116	479	355	432	59	40	37	

*Eastman Dental Center are non-matriculated. Other non-matriculated students are not reported on this table.

Source: Student Information System

UNIVERSITY OF ROCHESTER
UNDERGRADUATE ENROLLMENT BY MAJOR - OFFICIAL & UNOFFICIAL
By School, All Students, Fall Semester

	2002-03		2003-04		2004-05	
	Unofficial	Official	Unofficial	Official	Unofficial	Official
THE COLLEGE						
Arts & Sciences						
African & African-American Studies	-	-	-	3	-	5
American Sign Language	4	15	6	18	5	15
Anthropology	13	19	17	21	12	27
Art & Art History	15	26	16	24	11	19
Art History	10	10	9	9	7	4
Studio Arts	5	16	7	15	4	15
Biological Sciences	200	178	213	165	199	175
Biochemistry	78	22	79	25	77	37
Cell & Development	21	19	23	22	21	24
Ecology & Evol Biol	7	14	11	20	7	22
Microbiology	8	44	12	23	17	10
Molecular Genetics	47	31	48	34	37	37
Neuroscience	39	48	40	41	40	45
Biology	286	111	337	88	353	93
Brain & Cognitive Sciences	23	44	22	42	28	56
Chemistry	56	34	47	38	43	46
Clinical & Social Psychology	150	253	155	246	133	214
Cognitive Science	4	3	4	-	2	-
Computer Science	128	96	112	85	73	69
Earth & Environmental Sciences	22	25	23	18	27	19
Biology-Geology	3	2	2	1	1	1
Environmental Sciences	12	8	12	6	8	-
Environmental Studies	4	1	6	-	15	8
Geological Sciences	3	14	3	11	3	10
Economics	118	254	120	209	125	218
English	82	129	87	126	75	138
Film and Media Studies	10	19	15	25	20	28
Health & Society	15	69	19	57	20	53
History	66	77	65	80	72	96
Integrated Sciences	1	-	1	-	-	-
Interdepartmental	4	14	4	13	5	10
Linguistics	4	8	9	14	8	19
Mathematics	69	99	70	91	64	90
Applied Mathematics	4	13	11	19	8	13
Computer Science:Mathematics	-	-	-	-	4	-
Mathematics	61	84	56	70	49	75
Mathematics-Statistics	4	2	3	2	3	2
Modern Languages & Cultures	22	81	24	81	36	91
Comparative Literature	-	1	1	2	1	5
French	8	13	10	12	14	10
German	2	12	1	8	3	12
Japanese	3	14	3	14	2	17
Russian	1	5	1	8	-	11
Spanish	8	36	8	37	16	36
Music	11	15	15	14	21	14
Philosophy	15	17	11	32	7	36
Physics and Astronomy	80	39	83	38	69	55
Physics	56	27	57	30	42	45
Physics and Astronomy	24	12	26	8	27	10
Political Science	114	189	115	188	111	168
Religion & Classics	10	67	9	52	12	44
Classics	2	7	3	2	6	3
Religious Studies	8	60	6	50	6	41
Russian Studies	1	-	1	5	-	2
Sociology	-	-	-	-	3	-
Statistics	3	12	1	14	2	17
Women's Studies	-	4	1	3	1	2
Miscellaneous (Uncertain of Major)	410	-	341	-	346	-
3-2 Simon	8	-	9	-	8	-
Unknown	402	-	332	-	338	-
SUBTOTAL	1,936	1,897	1,943	1,790	1,883	1,819

UNIVERSITY OF ROCHESTER
UNDERGRADUATE ENROLLMENT BY MAJOR - OFFICIAL & UNOFFICIAL
By School, All Students, Fall Semester

	2002-03		2003-04		2004-05	
	Unofficial	Official	Unofficial	Official	Unofficial	Official
THE COLLEGE						
School of Engineering and Applied Sciences						
Biomedical Engineering	89	66	96	68	100	64
Chemical Engineering	34	45	35	32	29	25
Electrical & Computer Engineering	87	49	75	50	56	43
Engineering Science	22	1	14	3	14	1
Geomechanics	2	2	2	3	-	4
Interdepartmental Engineering	5	1	2	2	5	-
Mechanical Engineering	73	45	77	43	86	49
Optics	36	47	44	40	39	38
SUBTOTAL	348	256	345	241	329	224
THE COLLEGE SUBTOTAL	2,284	2,153	2,288	2,031	2,212	2,043
Eastman School of Music						
Applied Music	-	422	-	416	1	413
Composition	-	20	-	15	-	13
Jazz & Contemp Media	-	29	-	34	-	38
Jazz & Contemp Media - Performance	-	8	-	2	-	-
Jazz & Contemp Media - Writing	-	-	1	-	-	1
Music Education - General	-	17	-	13	-	11
Music Education - Instrumental	-	56	-	60	-	45
Music Education - Vocal	-	15	-	19	-	14
Music Theory	-	8	-	10	-	9
Musical Arts	-	5	-	5	-	4
SUBTOTAL	-	580	1	574	1	548
School of Nursing	-	122	-	129	-	133
TOTAL UNIVERSITY	2,284	2,855	2,289	2,734	2,213	2,724

Source: Registrar's reports UR-12(NEW) 10/11/02 (fall '02), 10/10/03 (fall '03), and 10/8/04 (fall '04)

Includes full-, part-, and x-time students.

Notes: Official majors have been declared by the student and approved by the school

Students with double majors and/or double degrees are counted in each major and/or degree

X-time indicates students are not registered for course work in the semester. These students are normally enrolled in a 'place-holder' course, which makes them eligible to register for courses at Rochester in a subsequent semester.

UNIVERSITY OF ROCHESTER

Graduate Majors

By School, All Students, Fall Semester (Those with double majors and/or double degrees are counted in each major and/or degree)

	2002-03			2002-03		2003-04			2003-04		2004-05			2004-05	
	Full	Part	X	Masters	Doctoral	Full	Part	X	Masters	Doctoral	Full	Part	X	Masters	Doctoral
THE COLLEGE															
Arts & Sciences															
Biology	41	-	1	-	42	37	-	1	1	37	33	1	1	1	34
Brain & Cognitive Science	27	-	-	-	27	21	1	-	1	21	30	-	-	-	30
Chemistry	74	1	5	2	78	66	4	2	1	71	80	2	3	3	82
Clinical, Social & Developmental Psychology	49	-	2	-	51	49	-	1	-	50	44	1	4	1	48
Computer Science	46	-	3	1	48	46	3	1	-	50	45	3	1	-	49
Earth & Environmental Sciences (Geology)	9	1	-	-	10	12	1	-	-	13	10	1	1	2	10
Economics	68	-	5	1	72	73	2	2	-	77	73	-	8	-	81
English	60	4	9	19	54	58	7	5	19	51	60	2	4	21	45
History	35	2	4	9	32	38	3	4	10	35	31	4	2	9	28
Interdepartmental	-	1	-	1	-	-	-	-	-	-	-	-	-	-	-
Linguistics	2	-	-	1	1	1	-	-	-	1	2	-	-	1	1
Mathematics	19	-	1	-	20	28	-	1	3	26	26	-	-	4	22
Modern Languages & Cultures, Comp Lit	-	-	1	-	1	2	-	-	2	-	3	-	-	3	-
Philosophy	24	1	1	-	26	25	1	-	-	26	24	-	1	-	25
Physics and Astronomy (Physics)	106	-	6	3	109	129	2	3	4	130	117	1	2	1	119
Political Science	27	-	7	-	34	32	-	6	-	38	31	-	5	-	36
Visual & Cultural Studies	35	1	6	1	41	36	1	2	1	38	31	-	3	1	33
SUBTOTAL	622	11	51	38	646	653	25	28	42	664	640	15	35	47	643

School of Engineering and Applied Sciences															
Biomedical Engineering	28	-	-	4	24	30	-	-	4	26	37	2	-	7	32
Chemical Engineering	34	3	2	14	26	45	5	1	22	29	47	3	-	17	33
Electrical Engineering	64	3	3	9	60	82	4	3	19	70	82	10	1	23	70
Electrical and Computer Engineering	-	-	-	-	-	-	-	-	-	-	3	-	-	3	-
Materials Science	18	2	1	3	18	16	3	-	2	17	15	3	-	2	16
Mechanical Engineering	24	7	3	12	22	25	6	-	9	22	23	6	-	6	23
Optics	88	4	6	20	78	88	6	5	25	74	73	6	3	13	69
SUBTOTAL	256	19	15	62	228	286	24	9	81	238	280	30	4	71	243

THE COLLEGE SUBTOTAL	878	30	66	100	874	939	49	37	123	902	920	45	39	118	886
-----------------------------	------------	-----------	-----------	------------	------------	------------	-----------	-----------	------------	------------	------------	-----------	-----------	------------	------------

	2002-03			2002-03		2003-04			2003-04		2004-05			2004-05	
	Full	Part	X	Masters	Doctoral	Full	Part	X	Masters	Doctoral	Full	Part	X	Masters	Doctoral
Simon Graduate School of Business Administration															
Business Administration	489	200	7	630	66	503	164	7	610	64	413	123	4	485	55
Business Admin. - Executive Development	79	-	-	79	-	58	-	-	58	-	54	-	-	54	-
Business Admin. - Bern, Switzerland	50	-	-	50	-	55	-	-	55	-	32	-	-	32	-
Business Admin. - Nijenrode, Netherlands	38	-	-	38	-	22	-	-	22	-	4	-	-	4	-
SUBTOTAL	656	200	7	797	66	638	164	7	745	64	503	123	4	575	55

*X-time indicates students are not registered for course work in the semester. These students are normally enrolled in a 'place-holder' course, which makes them eligible to register for courses at Rochester in a subsequent semester.

UNIVERSITY OF ROCHESTER

Graduate Majors

By School, All Students, Fall Semester (Those with double majors and/or double degrees are counted in each major and/or degree)

Warner Graduate School of Education and Human Development

[2003-04 and 2004-05, see below]

Warner School 2002-03	2002-03			2002-03	
	Full	Part	X	Masters	Doctoral
Administration: General	-	10	2	12	-
Administration: School Admin & Supervisor	1	-	-	1	-
Biology (5-12)	-	1	-	1	-
Biology (7-12)	1	4	-	5	-
Catholic School Admin	-	4	-	4	-
Chemistry (5-12)	1	-	-	1	-
Community Counseling	4	8	-	12	-
Community Counseling (3-2)	-	-	1	1	-
Counseling & Human Dev. Counseling Track	1	1	3	-	5
Counseling & Human Develop	7	10	4	3	18
Curriculum Elementary	1	1	-	2	-
Curriculum General	-	1	-	1	-
Curriculum Secondary English	-	3	-	3	-
Curriculum Secondary for Language	-	1	-	1	-
Curriculum Secondary Math	-	1	1	2	-
Curriculum Secondary Science	2	5	1	8	-
Curriculum Secondary Soc Stud	-	2	4	6	-
Early Childhood (B-2)	1	-	-	1	-
Early Childhood Inclusion (B-2)	1	-	-	1	-
Education Administration	1	46	9	2	54
Elementary (1-6)	5	-	-	5	-
Elementary Inclusion (1-6)	1	-	-	1	-
Elementary Inclusion Prof	-	1	-	1	-
English (7-12)	1	1	-	2	-
Higher Education	11	20	7	12	26
Human Devel. Community Agency Counseling	-	-	-	-	-
Human Devel. in Ed. Contexts	6	7	4	-	17
Human Development : General	1	6	2	9	-
Math (5-12)	1	-	-	1	-
Math Ext. (5-6)	-	1	-	1	-
Math Inclusion (5-12)	1	-	-	1	-
Psychological Development	-	1	-	1	-
School Counseling	7	22	-	29	-
School Counseling: Community	3	2	1	6	-
School Guidance	2	1	-	3	-
Social Studies (7-12)	1	-	-	1	-
Social Studies Prof	-	1	-	1	-
Spanish (7-12)	2	1	-	3	-
Teaching and Curriculum	3	9	4	16	-
Teaching Curriculum	2	15	7	-	24
Teaching Curriculum & Change	12	14	9	-	35
Teaching in English	1	1	-	2	-
Teaching in History	1	-	-	1	-
Teaching in Mathematics	1	-	-	1	-
TESOL	2	3	-	5	-
Thought & Policy	1	2	-	-	3
SUBTOTAL	86	206	59	169	182

Warner School Programs, Summary of Masters and Doctoral Programs	2003-04			2003-04	2004-05			2004-05
	Full	Part	X	Masters	Full	Part	X	Masters

Counseling (MS)	31	37	5	73	37	33	1	71
Higher Education (MS)	3	13	-	16	1	19	1	21
Human Develop (MS)	2	2	-	4	1	5	-	6
School Administration (MS)	1	18	3	22	-	16	1	17
Teaching and Curriculum (MS)	3	9	8	20	-	7	1	8
Subject Area (MAT)	3	-	-	3	3	1	-	4
Education (MS)	24	32	1	57	28	40	5	73
SUBTOTAL	67	111	17	195	70	121	9	200

	2003-04			2003-04	2004-05			2004-05	
	Full	Part	X	Doctoral	Full	Part	X	Masters	Doctoral
Education (PhD)	28	27	18	73	30	30	11	-	71
Education (EdD)	13	69	31	113	16	66	26	-	108
SUBTOTAL	41	96	49	186	46	96	37	-	179

*X-time indicates students are not registered for course work in the semester. These students are normally enrolled in a 'place-holder' course, which makes them eligible to register for courses at Rochester in a subsequent semester.

UNIVERSITY OF ROCHESTER

Graduate Majors

By School, All Students, Fall Semester (Those with double majors and/or double degrees are counted in each major and/or degree)

	2002-03			2002-03		2003-04			2003-04		2004-05			2004-05	
	Full	Part	X	Masters	Doctoral	Full	Part	X	Masters	Doctoral	Full	Part	X	Masters	Doctoral
Eastman School of Music															
Accompanying	12	-	3	4	11	14	-	1	4	11	13	-	1	3	11
Composition	16	-	1	13	4	16	-	-	8	8	15	-	1	6	10
Conducting (Choral/Orchestral/Wind Ensemble)	10	-	3	7	6	10	-	2	7	5	6	-	-	2	4
Jazz Studies&Contemp Media	9	2	-	8	3	11	1	-	9	3	14	1	1	8	8
Jazz Studies&Contemp Media-Performance	-	-	-	-	-	-	-	-	-	-	-	-	-	-	-
Jazz Studies&Contemp Media-Writing	6	-	-	6	-	5	-	-	5	-	-	-	-	-	-
Music Education - Graduate	13	11	3	16	11	17	13	2	21	11	19	11	5	23	12
Music Theory	31	-	6	4	33	30	-	6	4	32	29	-	3	2	30
Musicology	17	-	5	1	21	18	-	6	1	23	14	1	6	1	20
Opera	-	-	-	-	-	-	-	-	-	-	2	-	-	2	-
Performance & Literature	235	8	31	157	117	254	18	19	162	129	250	20	25	161	134
Theory Pedagogy	11	-	1	6	6	8	2	1	7	4	5	1	-	5	1
SUBTOTAL	360	21	53	222	212	383	34	37	228	226	367	34	42	213	230

	2002-03			2002-03		2003-04			2003-04		2004-05			2004-05	
	Full	Part	X	Masters	Doctoral	Full	Part	X	Masters	Doctoral	Full	Part	X	Masters	Doctoral
School of Medicine & Dentistry															
<i>Notes: Figures do not include M.D. student enrollments.</i>															
<i>First-year Ph.D. student clusters are reported in the program name.</i>															
Anatomy	-	-	2	-	2	3	-	1	-	4	3	-	-	-	3
Biochem Molecular Bio & Genetics	13	-	-	-	13	12	-	-	-	12	18	-	-	-	18
Biochemistry	36	1	-	1	36	42	-	-	-	42	42	-	-	-	42
Biophysics	23	-	-	-	23	22	-	1	-	23	22	-	-	-	22
Cell Regulatns & Molecular Pharm	-	-	-	-	-	-	-	-	-	-	-	-	-	-	-
Cellular & Molecular Basis of Disease	15	-	-	-	15	13	-	-	-	13	16	-	-	-	16
Dental Science	1	1	-	2	-	1	-	1	2	-	2	1	-	3	-
Epidemiology	1	-	-	-	1	5	1	-	1	5	7	-	-	1	6
Genetics	16	-	1	-	17	17	-	-	-	17	14	-	-	-	14
Genetics Genomics & Dev	2	-	-	-	2	5	-	-	-	5	12	-	-	-	12
Health Services Research & Policy	12	2	2	-	16	15	2	2	-	19	14	1	2	-	17
Immunology Microbiol & Vacc Biol	13	-	-	-	13	23	-	-	-	23	27	-	-	-	27
Microbiology & Immunology	55	8	3	11	55	61	5	2	8	60	58	12	1	10	55
Molecular Biophy & Structural Biochem	5	-	-	-	5	7	-	-	-	7	7	-	-	-	7
Marriage & Family Therapy	12	13	1	26	-	15	14	1	30	-	20	12	-	32	-
Neuroscience	36	-	2	-	38	39	-	-	-	39	45	-	-	-	45
Pathology	39	-	-	-	39	36	1	-	1	36	30	1	-	1	30
Pathways of Human Disease	-	-	-	-	-	8	-	-	-	8	5	-	-	-	5
Pharmacology	26	2	1	2	27	26	2	1	2	27	29	1	-	1	29
Public Health	10	24	9	43	-	6	21	15	42	-	6	23	9	38	6
Public Health Clinical Investigation	7	40	8	53	2	7	32	16	53	2	13	36	19	65	3
Statistics	2	-	-	-	2	9	-	-	-	9	12	-	-	-	12
Toxicology	35	-	2	-	37	37	-	1	-	38	34	-	1	-	35
SUBTOTAL	359	91	31	138	343	409	78	41	139	389	436	87	32	151	404

	2002-03			2002-03		2003-04			2003-04		2004-05			2004-05	
	Full	Part	X	Masters	Doctoral	Full	Part	X	Masters	Doctoral	Full	Part	X	Masters	Doctoral
School of Nursing															
Acute Critical Care	2	6	1	9	-	1	5	1	7	-	1	4	-	5	-
Acute Care Cardiovascular	-	8	2	10	-	-	5	1	6	-	-	3	1	4	-
Acute Care Cardiopulmonary	-	-	-	-	-	-	-	-	-	-	-	1	-	1	-
Adult Nurse Practitioner	-	25	7	32	-	2	20	3	25	-	1	26	4	31	-
Care of Children & Families	5	15	4	24	-	4	17	2	23	-	5	13	3	20	1
Family Health Nurse Practitioner	7	25	4	36	-	9	20	4	33	-	6	28	2	36	-
Gerontological Nurse Practitioner	-	-	-	-	-	1	1	-	1	1	-	3	-	3	-
Leadership in Health Care Systems	-	-	-	-	-	-	-	-	-	-	-	22	1	23	-
Neonatal Nurse Practitioner	2	3	-	5	-	1	1	-	2	-	-	-	-	-	-
Nursing	23	7	8	1	37	18	6	11	1	34	22	8	6	1	35
Pediatric Nurses Prac/Psych Mental Health	3	-	-	3	-	2	-	2	4	-	4	2	2	8	-
Psych Mental Health	7	15	1	22	1	3	11	2	16	-	2	6	2	10	-
SUBTOTAL	49	104	27	142	38	41	86	26	118	35	41	116	21	142	36

	2002-03			2002-03		2003-04			2003-04		2004-05			2004-05	
	Full	Part	X	Masters	Doctoral	Full	Part	X	Masters	Doctoral	Full	Part	X	Masters	Doctoral
UNIVERSITY TOTALS	2,388	652	243	1,568	1,715	2,518	618	214	1,548	1,802	2,383	622	184	1,399	1,790

*X-time indicates students are not registered for course work in the semester. These students are normally enrolled in a 'place-holder' course, which makes them eligible to register for courses at Rochester in a subsequent semester.
Source: Student Information System

UNIVERSITY OF ROCHESTER

**Course Credit Hours & Enrollments by School and Subject Area
Reported for Undergraduate & Graduate Students**

Arts & Sciences	NUMBER OF CREDIT HOURS						NO. OF COURSE ENROLLMENTS					
	Fall 2002		Fall 2003		Fall 2004		Fall 2002		Fall 2003		Fall 2004	
	UG	Grad	UG	Grad	UG	Grad	UG	Grad	UG	Grad	UG	Grad
African-American Studies	48	-	16	-	24	-	12	-	4	-	6	1
American Sign Language	760	16	900	8	818	8	190	4	225	2	205	2
American Sign Language	736	16	868	8	818	8	184	4	217	2	205	2
Japanese Sign Language	24	-	32	-	-	-	6	-	8	-	-	-
Anthropology	972	-	1,136	4	1,084	9	243	-	284	1	275	3
Art & Art History	1,008	148	1,207	145	996	193	250	42	299	50	246	58
Art & Art History - Art History	476	140	601	141	468	193	117	40	147	49	114	58
Art & Art History - Studio Arts	532	8	606	4	528	-	133	2	152	1	132	-
Biology	3,737	348	4,192	328	3,911	278	1,067	97	1,233	95	1,162	71
Brain & Cognitive Science	2,665	257	2,633	230	2,860	281	712	70	709	53	767	78
Brain & Cognitive Science	2,260	247	2,256	223	2,426	273	572	66	571	50	613	74
Neuroscience	405	10	377	7	434	8	140	4	138	3	154	4
Chemistry	3,718	630	4,110	631	3,998	738	1,011	174	1,098	148	1,112	193
Clinical & Social Psychology	5,115	358	4,702	364	4,262	388	1,382	120	1,260	119	1,153	130
Clinical & Soc Sciences in Psy	3,993	358	3,607	364	3,325	388	1,095	120	985	119	902	130
Psychology	1,122	-	1,095	-	937	-	287	-	275	-	251	-
Computer Science	2,764	344	2,034	390	1,796	449	692	104	513	107	463	116
Dance	321	2	350	2	342	-	152	1	165	1	168	-
Earth & Environmental Sciences	587	78	512	101	456	93	149	16	126	26	114	27
Economics	4,027	702	4,227	763	3,918	808	1,008	188	1,057	219	979	243
English	3,829	582	3,528	546	3,808	589	971	156	895	145	968	155
Film and Media Studies	64	-	74	-	68	-	16	-	19	-	17	-
Health & Society	646	-	202	-	634	-	162	-	51	-	160	-
History	2,246	151	2,395	305	2,812	213	562	61	598	102	703	68
Linguistics	590	-	772	-	732	13	148	1	193	-	183	3
Mathematics	5,772	234	5,578	331	5,604	292	1,426	65	1,379	89	1,385	73
Modern Languages & Cultures	4,388	96	4,530	46	4,418	49	1,111	27	1,127	12	1,086	14
Chinese	210	-	236	6	232	-	41	-	42	1	45	-
Comparative Literature	316	31	204	4	194	6	80	9	52	2	50	3
French	460	13	604	24	606	-	120	4	159	6	158	-
German	436	24	762	12	508	24	113	6	191	3	127	6
Italian	540	-	478	-	468	4	144	-	126	-	121	1
Japanese	690	13	532	-	708	-	155	4	111	-	159	-
Polish	24	-	20	-	12	-	6	-	5	-	3	-
Russian	648	-	482	-	474	-	168	-	124	-	119	-
Spanish	1,064	15	1,212	-	1,216	15	284	4	317	-	304	4
Music	1,510	-	1,427	6	1,377	4	558	-	533	2	536	1
Naval Science	160	-	136	-	184	-	40	-	34	-	46	-
Philosophy	2,048	140	2,048	155	2,116	133	512	49	512	52	529	44
Physics & Astronomy	2,900	901	2,626	772	2,840	799	739	192	667	200	723	188
Astronomy	582	64	400	44	556	80	151	11	100	10	139	20
Physics	2,318	837	2,226	728	2,284	719	588	181	567	190	584	168
Political Science	3,144	291	3,364	314	3,560	298	779	80	828	90	878	87
Religion & Classics	2,800	24	2,452	23	2,444	16	683	6	594	6	601	4
Classical Greek	32	-	44	-	40	4	8	-	11	-	10	1
Classical Studies	112	-	156	-	328	-	28	-	39	-	82	-
Judaic Studies	8	-	2	-	34	-	4	-	1	-	16	-
Religion & Classics - Arabic	104	12	320	4	240	4	26	3	80	1	60	1
Religion & Classics - Hebrew	156	4	88	4	128	-	39	1	22	1	32	-
Religion & Classics - Latin	192	4	170	-	220	-	49	1	44	-	56	-
Religion & Classics - Yiddish	12	-	-	-	-	4	3	-	-	-	-	1
Religion & Classics - Sanskrit	80	-	56	4	8	-	20	-	14	1	2	-
Religion & Classics	2,104	4	1,616	11	1,446	4	506	1	383	3	343	1
Russian Studies	4	-	181	-	60	-	1	-	46	-	17	-
Sociology	288	-	320	-	416	-	72	-	80	-	104	-
Statistics	984	7	832	45	808	60	246	2	208	13	202	16
The College: Arts & Sciences	2,341	-	2,379	-	2,460	2	612	-	620	-	644	1
Wallis Institute of Political Economics	-	32	-	28	-	30	-	8	-	7	-	7
Women's Studies	92	-	58	-	54	-	28	-	22	-	20	-
SUBTOTAL	59,528	5,341	58,920	5,537	58,859	5,743	15,534	1,463	15,379	1,539	15,452	1,583
Study Abroad	992	-	880	-	792	-	73	-	68	-	63	-
TOTAL	60,520	5,341	59,800	5,537	59,651	5,743	15,607	1,463	15,447	1,539	15,515	1,583

School of Engineering & Applied Sciences	NUMBER OF CREDIT HOURS						NO. OF COURSE ENROLLMENTS					
	Fall 2002		Fall 2003		Fall 2004		Fall 2002		Fall 2003		Fall 2004	
	UG	Grad	UG	Grad	UG	Grad	UG	Grad	UG	Grad	UG	Grad
Biomedical Engineering	916	189	873	182	847	189	279	50	270	53	257	54
Chemical Engineering	669	393	536	446	469	411	195	92	139	96	121	97
Electrical and Computer Engineering	1,142	520	971	674	844	746	299	140	260	172	225	181
Materials Science	-	44	-	32	-	80	-	17	-	13	-	17
Mechanical Engineering	1,313	358	1,298	373	1,466	245	339	94	336	105	376	60
Optics	712	758	730	866	679	665	178	212	183	250	171	178
TOTAL	4,752	2,262	4,408	2,573	4,305	2,336	1,290	605	1,188	689	1,150	587

UNIVERSITY OF ROCHESTER

**Course Credit Hours & Enrollments by School and Subject Area
Reported for Undergraduate & Graduate Students**

Simon Graduate School of Business Administration	NUMBER OF CREDIT HOURS						NO. OF COURSE ENROLLMENTS					
	Fall 2002		Fall 2003		Fall 2004		Fall 2002		Fall 2003		Fall 2004	
	UG	Grad	UG	Grad	UG	Grad	UG	Grad	UG	Grad	UG	Grad
Accounting	576	1,311	344	1,383	352	968	146	575	90	596	98	390
Applied Economics	-	168	-	151	-	123	-	56	-	49	-	41
Applied Statistics	8	888	20	875	44	605	4	443	10	425	22	301
Business Environ & Public Policy	-	102	-	84	-	93	-	34	-	28	-	31
Business Law	188	-	196	-	188	-	47	-	49	-	47	-
Competitive & Organizational Strategy	8	1,355	20	1,103	40	766	4	587	10	477	20	322
Computer & Information Sys	40	355	40	390	64	328	10	151	10	180	17	154
Exec. Program - Bern, Switzerland	-	450	-	495	-	324	-	150	-	165	-	108
Exec. Program - Nijenrode, Netherlands	-	570	-	264	-	-	-	152	-	88	-	-
Executive Development	-	839	-	542	-	464	-	242	-	144	-	120
Finance	174	1,497	220	1,359	143	1,263	44	499	56	453	39	421
General Business Admin	67	224	52	372	76	139	17	87	13	116	19	75
Health Sciences	-	63	-	87	-	36	-	21	-	29	-	12
Management Communications	2	173	-	-	-	-	2	173	-	-	-	-
Management Science Models	-	42	-	48	-	24	-	14	-	16	-	8
Marketing	148	540	196	465	152	453	37	180	49	155	38	151
Operations Management	32	300	24	216	60	195	8	100	6	72	15	65
TOTAL	1,243	8,877	1,112	7,834	1,119	5,781	319	3,464	293	2,993	315	2,199

Eastman School of Music	NUMBER OF CREDIT HOURS						NO. OF COURSE ENROLLMENTS					
	Fall 2002		Fall 2003		Fall 2004		Fall 2002		Fall 2003		Fall 2004	
	UG	Grad	UG	Grad	UG	Grad	UG	Grad	UG	Grad	UG	Grad
Accompanying	47	64	43	76	53	50	40	23	34	22	43	16
Arts Leadership Curriculum	78	140	118	173	107	161	65	107	71	114	81	115
Composition	198	80	130	83	160	102	100	40	68	35	80	46
Conducting	118	58	112	49	78	73	59	26	56	22	39	32
Eastman Initiatives Curriculum	258	-	146	-	130	-	129	-	142	-	128	-
Eastman School of Music	-	122	-	83	-	-	-	102	-	100	-	89
Ensemble	903	102	857	109	908	85	545	87	530	87	548	73
Ethnomusicology	-	-	-	-	-	3	-	-	-	-	-	1
Guitar Class	-	-	-	-	12	2	-	-	-	-	6	1
Humanities	1,406	57	1,402	56	1,401	78	489	40	490	28	490	35
Jazz Studies & Contemp Media	318	105	287	97	248	75	205	64	195	61	171	46
Music Education	314	84	416	95	260	147	198	32	254	39	171	64
Music History	401	538	121	573	561	574	134	215	41	228	186	224
Musicology	-	110	3	123	-	150	-	28	1	33	-	40
Opera	71	46	87	62	74	49	30	26	35	36	30	28
Orchestration	-	12	-	14	2	4	-	6	-	7	1	2
Pedagogy	49	30	29	15	37	46	32	16	25	8	26	25
Performance	-	-	-	1	1	6	-	-	-	1	1	4
Sacred Music	2	4	-	9	-	-	2	4	-	5	-	-
Theory	1,446	535	1,474	515	1,441	563	438	203	718	196	709	218
SUBTOTAL	5,608	2,086	5,225	2,131	5,472	2,167	2,466	1,019	2,660	1,022	2,710	1,059
Applied Music	3,166	1,305	3,224	1,462	3,257	1,464	1,186	339	1,203	400	1,205	406
SUBTOTAL	8,774	3,391	8,449	3,593	8,729	3,631	3,652	1,358	3,863	1,422	3,915	1,465
Study Abroad	16	-	32	12	-	-	1	-	2	1	-	-
TOTAL	8,790	3,391	8,481	3,605	8,729	3,631	3,653	1,358	3,865	1,423	3,915	1,465

UNIVERSITY OF ROCHESTER
Course Credit Hours & Enrollments by School and Subject Area
Reported for Undergraduate & Graduate Students

School of Medicine & Dentistry Does not include M.D. students	NUMBER OF CREDIT HOURS						NO. OF COURSE ENROLLMENTS					
	Fall 2002		Fall 2003		Fall 2004		Fall 2002		Fall 2003		Fall 2004	
	UG	Grad	UG	Grad	UG	Grad	UG	Grad	UG	Grad	UG	Grad
Anatomy	-	-	-	41	-	32	-	-	-	4	-	4
Biochemistry	364	616	431	763	570	692	91	104	108	130	143	139
Biophysics	-	399	-	389	-	239	-	52	-	62	-	50
Biostatistics	28	380	28	444	24	390	12	109	11	118	12	116
General Dentistry	-	228	-	240	-	300	-	19	-	20	-	25
Genetics	-	272	-	289	-	352	-	50	-	49	-	72
Interdepartmental	96	691	99	707	177	764	21	154	23	161	41	174
Microbiology	381	1,050	204	1,266	151	1,017	96	286	54	346	39	295
Neuroscience	-	515	-	547	4	606	-	74	-	80	1	124
Oral Biology	-	28	-	26	-	47	-	19	-	21	-	35
Orthodontics	-	24	-	24	-	72	-	2	-	2	-	6
Pathology	-	604	-	666	4	370	-	116	-	127	1	74
Pedodontics	-	-	-	-	-	60	-	-	-	-	-	5
Periodontics	-	12	-	24	-	24	-	1	-	2	-	2
Pharmacology & Physiology	-	591	4	534	4	505	-	107	1	83	1	101
Preventive Medicine	23	718	34	681	11	763	7	245	9	221	3	231
Prosthodontics	-	24	-	24	-	36	-	2	-	2	-	3
Psychiatry	-	243	-	181	-	242	-	84	-	62	-	85
Temporomandibular Joint Disorder	-	48	-	60	-	-	-	4	-	5	-	-
Toxicology	-	399	-	480	-	300	-	59	-	60	-	58
TOTAL	892	6,842	800	7,386	945	6,811	227	1,487	206	1,555	241	1,599

Warner Graduate School of Education and Human Development	NUMBER OF CREDIT HOURS						NO. OF COURSE ENROLLMENTS					
	Fall 2002		Fall 2003		Fall 2004		Fall 2002		Fall 2003		Fall 2004	
	UG	Grad	UG	Grad	UG	Grad	UG	Grad	UG	Grad	UG	Grad
Education	59	869	22	903	26	998	17	354	6	392	9	421
Field Experiences	-	60	-	79	-	114	-	26	-	38	-	51
Higher Education	55	1,037	28	1,072	7	1,249	16	351	8	358	2	422
TOTAL	114	1,966	50	2,054	33	2,361	33	731	14	788	11	894

School of Nursing	NUMBER OF CREDIT HOURS						NO. OF COURSE ENROLLMENTS					
	Fall 2002		Fall 2003		Fall 2004		Fall 2002		Fall 2003		Fall 2004	
	UG	Grad	UG	Grad	UG	Grad	UG	Grad	UG	Grad	UG	Grad
Leadership in Health Care Sys	-	-	-	-	-	154	-	-	-	-	-	44
Nursing	872	1,048	1,210	925	1,272	923	231	277	314	248	328	247
Nursing/Community Center	13	49	122	140	58	101	13	33	42	62	24	32
TOTAL	885	1,097	1,332	1,065	1,330	1,178	244	310	356	310	352	323

University Totals	NUMBER OF CREDIT HOURS						NO. OF COURSE ENROLLMENTS					
	Fall 2002		Fall 2003		Fall 2004		Fall 2002		Fall 2003		Fall 2004	
	UG	Grad	UG	Grad	UG	Grad	UG	Grad	UG	Grad	UG	Grad
Fall each academic year	77,196	29,776	75,982	30,053	76,112	27,840	21,373	9,418	21,369	9,297	21,499	8,650

Notes:

Students registered for leave of absence, including senior year in absentia, have been excluded.

Eastman Dental Center credit hours are included in SMD.

Cross-listed registrations are reported in the parent course.

Source: Student Information System

UNIVERSITY OF ROCHESTER

Distribution of Undergraduate Courses by Section Size

Fall 2004

Arts & Sciences	# Sect.	Avg. Size								
			1-9	10-19	20-29	30-39	40-49	50-99	100-199	200+
African-American Studies	1	6	1	-	-	-	-	-	-	-
American Sign Language	15	14	2	13	-	-	-	-	-	-
American Sign Language	15	14	2	13	-	-	-	-	-	-
Japanese Sign Language	-	-	-	-	-	-	-	-	-	-
Anthropology	12	23	1	5	3	-	3	-	-	-
Art & Art History	20	13	8	10	1	-	1	-	-	-
Art & Art History - Art History	9	14	5	2	1	-	1	-	-	-
Art & Art History - Studio Arts	11	11	3	8	-	-	-	-	-	-
Biology	17	68	1	6	2	-	2	2	3	1
Brain & Cognitive Science	15	51	-	5	2	2	-	5	-	1
Brain & Cognitive Science	9	67	-	1	1	2	-	4	-	1
Neuroscience	6	26	-	4	1	-	-	1	-	-
Chemistry	9	124	-	1	3	1	-	-	1	3
Clinical & Social Psychology	26	43	6	8	4	1	-	3	4	-
Clinical & Soc Sciences in Psy	23	38	6	7	4	1	-	2	3	-
Psychology	3	76	-	1	-	-	-	1	1	-
Computer Science	17	30	2	3	5	4	1	1	1	-
Dance	15	11	6	8	1	-	-	-	-	-
Earth & Environmental Sciences	9	13	5	2	1	1	-	-	-	-
Economics	16	60	-	2	4	-	-	9	-	1
English	48	20	10	23	10	1	1	3	-	-
Film & Media Studies	1	13	-	1	-	-	-	-	-	-
Health & Society	2	73	-	-	1	-	-	-	1	-
History	30	23	6	9	6	5	1	3	-	-
Linguistics	6	31	-	2	-	2	1	1	-	-
Mathematics	36	38	3	4	10	3	4	12	-	-
Modern Languages & Cultures	64	17	15	27	14	5	2	1	-	-
Chinese	4	12	2	1	1	-	-	-	-	-
Comparative Literature	1	47	-	-	-	-	1	-	-	-
French	11	14	1	9	1	-	-	-	-	-
German	9	15	3	4	1	1	-	-	-	-
Italian	5	24	2	1	-	1	-	1	-	-
Japanese	10	16	3	4	2	-	1	-	-	-
Polish	1	5	1	-	-	-	-	-	-	-
Russian	8	15	3	2	2	1	-	-	-	-
Spanish	15	21	-	6	7	2	-	-	-	-
Music	34	16	15	8	7	2	2	-	-	-
Naval Science	3	15	-	2	1	-	-	-	-	-
Philosophy	15	36	2	4	1	2	1	5	-	-
Physics & Astronomy	16	45	3	4	2	3	-	1	3	-
Astronomy	3	46	1	1	-	-	-	-	1	-
Physics	13	45	2	3	2	3	-	1	2	-
Political Science	20	42	3	4	4	1	2	4	2	-
Religion & Classics	27	22	7	9	4	2	2	3	-	-
Classical Greek	1	10	-	1	-	-	-	-	-	-
Classical Studies	2	41	-	1	-	-	-	1	-	-
Judaic Studies	1	15	-	1	-	-	-	-	-	-
Religion & Classics - Arabic	4	16	2	-	2	-	-	-	-	-
Religion & Classics - Hebrew	2	13	1	1	-	-	-	-	-	-
Religion & Classics - Latin	3	18	1	1	-	1	-	-	-	-
Religion & Classics - Yiddish	1	1	1	-	-	-	-	-	-	-
Religion & Classics - Sanskrit	1	3	1	-	-	-	-	-	-	-
Religion & Classics	12	28	1	4	2	1	2	2	-	-
Russian Studies	2	8	1	1	-	-	-	-	-	-
Sociology	5	20	1	2	1	-	1	-	-	-
Statistics	5	42	-	2	1	-	-	1	1	-
The College: Arts & Sciences	50	13	10	39	-	1	-	-	-	-
Women's Studies	2	10	1	1	-	-	-	-	-	-
TOTAL	538	29	109	205	88	36	24	54	16	6

UNIVERSITY OF ROCHESTER

Distribution of Undergraduate Courses by Section Size

Fall 2004

School of Engineering and Applied Sciences	#	Avg.			20-	30-	40-	50-	100-		
	Sect.	Size	1-9	10-19	29	39	49	99	199	200+	
Biomedical Engineering	7	37	-	1	-	4	1	1	-	-	-
Chemical Engineering	9	16	3	4	1	1	-	-	-	-	-
Electrical & Computer Engineering	13	21	1	5	4	3	-	-	-	-	-
Mechanical Engineering	12	32	1	2	2	4	1	2	-	-	-
Optics	7	24	-	2	3	2	-	-	-	-	-
TOTAL	48	26	5	14	10	14	2	3	-	-	-

Simon Graduate School of Business Administration	#	Avg.			20-	30-	40-	50-	100-		
	Sect.	Size	1-9	10-19	29	39	49	99	199	200+	
Accounting	2	39	-	-	-	1	1	-	-	-	-
Business Law	2	24	-	-	2	-	-	-	-	-	-
Computers & Information Sys	1	15	-	1	-	-	-	-	-	-	-
Finance	1	25	-	-	1	-	-	-	-	-	-
General Business Admin	2	10	1	1	-	-	-	-	-	-	-
Marketing	2	19	-	2	-	-	-	-	-	-	-
Operations Management	1	15	-	1	-	-	-	-	-	-	-
TOTAL	11	22	1	5	3	1	1	-	-	-	-

UNIVERSITY OF ROCHESTER

Distribution of Undergraduate Courses by Section Size

Fall 2004

Eastman School of Music	# Sect.	Avg. Size	Section Size							
			1-9	10-19	20-29	30-39	40-49	50-99	100-199	200+
Accompanying	4	14	2	1	-	1	-	-	-	-
Arts Leadership Curriculum	12	16	1	8	3	-	-	-	-	-
Composition	11	7	8	2	1	-	-	-	-	-
Conducting	5	11	4	-	-	1	-	-	-	-
Eastman Initiatives Curriculum	2	64	1	-	-	-	-	-	1	-
Eastman School of Music	1	9	1	-	-	-	-	-	-	-
Ensembles	21	27	7	7	3	-	2	-	2	-
Guitar Class	2	3	2	-	-	-	-	-	-	-
Humanities	38	14	11	17	10	-	-	-	-	-
Anthropology and Religion	1	17	-	1	-	-	-	-	-	-
Art History	2	14	-	2	-	-	-	-	-	-
English	7	11	4	1	2	-	-	-	-	-
French	5	10	2	3	-	-	-	-	-	-
German	8	13	3	3	2	-	-	-	-	-
History	1	11	-	1	-	-	-	-	-	-
Humanities	8	20	-	3	5	-	-	-	-	-
Italian	4	12	2	1	1	-	-	-	-	-
Philosophy	1	15	-	1	-	-	-	-	-	-
Psychology	1	17	-	1	-	-	-	-	-	-
Jazz Studies & Contemp Media	24	9	15	9	-	-	-	-	-	-
Music Education	44	4	38	6	-	-	-	-	-	-
Music History	9	23	2	4	1	-	-	2	-	-
Opera	4	9	2	2	-	-	-	-	-	-
Pedagogy	3	9	1	2	-	-	-	-	-	-
Theory	33	23	4	15	3	5	4	2	-	-
SUBTOTAL	213	14	99	73	21	7	6	4	3	-
Applied Music	193	6	147	40	4	1	-	1	-	-
Bassoon	3	7	2	1	-	-	-	-	-	-
Chamber Music	13	17	5	3	3	1	-	-	1	-
Clarinet	4	6	4	-	-	-	-	-	-	-
Double Bass	2	10	1	1	-	-	-	-	-	-
Euphonium	2	4	2	-	-	-	-	-	-	-
Flute	5	6	4	1	-	-	-	-	-	-
Guitar	3	6	2	1	-	-	-	-	-	-
Harp	2	7	1	1	-	-	-	-	-	-
Harpichord	1	7	1	-	-	-	-	-	-	-
Horn	3	8	2	-	1	-	-	-	-	-
Jazz Lessons	11	4	10	1	-	-	-	-	-	-
Keyboard	6	6	5	1	-	-	-	-	-	-
Lute	1	2	1	-	-	-	-	-	-	-
Oboe	5	4	4	1	-	-	-	-	-	-
Organ	5	2	5	-	-	-	-	-	-	-
Percussion	3	11	1	2	-	-	-	-	-	-
Piano	19	7	12	7	-	-	-	-	-	-
Piano Class	41	4	37	4	-	-	-	-	-	-
Piccolo	2	3	2	-	-	-	-	-	-	-
Saxophone	5	5	4	1	-	-	-	-	-	-
Strings	1	4	1	-	-	-	-	-	-	-
Trombone	4	6	3	1	-	-	-	-	-	-
Trumpet	3	7	2	1	-	-	-	-	-	-
Tuba	2	3	2	-	-	-	-	-	-	-
Viola	7	4	6	1	-	-	-	-	-	-
Violin	14	6	10	4	-	-	-	-	-	-
Violoncello	5	5	4	1	-	-	-	-	-	-
Voice	21	7	14	7	-	-	-	-	-	-
TOTAL	406	10	246	113	25	8	6	5	3	-

UNIVERSITY OF ROCHESTER

Distribution of Undergraduate Courses by Section Size

Fall 2004

School of Medicine and Dentistry	#	Avg.								
	Sect.	Size	1-9	10-19	20-29	30-39	40-49	50-99	100-199	200+
Biochemistry	1	154	-	-	-	-	-	-	1	-
Microbiology	2	18	1	-	1	-	-	-	-	-
TOTAL	3	63	1	-	1	-	-	-	1	-

School of Nursing	#	Avg.								
	Sect.	Size	1-9	10-19	20-29	30-39	40-49	50-99	100-199	200+
Nursing	15	20	4	2	6	2	-	1	-	-
Nursing/Community Center	3	5	3	-	-	-	-	-	-	-
TOTAL	18	18	7	2	6	2	-	1	-	-

Notes: Registrar's Student Section Extract includes all registrants who have not withdrawn as of the fourth week of classes; includes auditors; excludes labs and independent study.

All cross listed registrations are listed in parent course.

Source: Student Information Files (ISIS)

UNIVERSITY OF ROCHESTER
Full-time Tenure-track Faculty*

	1995-96	1996-97	1997-98	1998-99	1999-00	2000-01	2001-02	2002-03	2003-04	2004-05
<u>SCHOOL</u>										
Arts & Sciences	284	279	260	261	258	259	258	258	261	260
Engineering & Applied Sciences	56	55	53	51	50	49	53	57	57	60
The College Subtotal	340	334	313	312	308	308	311	315	318	320
Simon Graduate School of Business	37	39	41	40	46	48	46	47	44	41
Warner Graduate School of Education & Human Development	20	20	21	18	17	20	21	21	25	23
Eastman School of Music	83	80	86	81	82	80	82	86	86	89
School of Medicine & Dentistry	540	537	529	532	547	536	542	603	650	731
School of Nursing	18	19	17	17	14	15	16	18	18	19
University Total	1,038	1,029	1,007	1,000	1,014	1,007	1,018	1,090	1,141	1,223

*Full-time tenure-track faculty as reported annually by the University Budget Office. Includes faculty who are tenured, and those in a track towards tenure. School of Medicine and Dentistry counts are submitted by that school's dean's office.

UNIVERSITY OF ROCHESTER
Full-time Tenure-track Faculty

2002-03 2003-04 2004-05

SCHOOL AND DEPARTMENT

THE COLLEGE

Arts & Sciences

Anthropology	5	6	6
Art & Art History	8	10	11
Biology	16	16	16
Brain and Cognitive Science	17	17	17
Chemistry	20	20	19
Clinical and Social Psychology	14	14	15
Computer Science	14	15	14
Earth and Environmental Sciences	7	7	6
Economics	18	15	16
English	20	19	20
History	17	17	15
Linguistics	3	3	3
Mathematics	16	17	17
Modern Languages & Cultures	15	16	15
Music	4	4	4
Philosophy	8	9	9
Physics and Astronomy	27	28	27
Political Science	18	17	19
Religion & Classics	9	9	9
Sociology	2	2	2
SUBTOTAL	258	261	260

**School of Engineering
and Applied Sciences**

Biomedical Engineering	5	4	5
Chemical Engineering	6	6	7
Electrical & Computer Engineering	16	18	18
Mechanical Engineering	14	13	14
Optics	16	16	16
SUBTOTAL	57	57	60

THE COLLEGE SUBTOTAL

315	318	320
-----	-----	-----

**Simon Graduate School of
Business Administration**

47	44	41
----	----	----

**Warner Graduate School of Education and
Human Development**

21	25	23
----	----	----

Eastman School of Music

Composition	4	5	5
Conducting/Ensemble	4	4	4
Humanities	6	6	5
Jazz and Contemporary Media	4	4	4
Music Education	6	6	6
Musicology	8	7	8
Opera	1	1	1
Organ	2	2	2
Piano	8	8	8
Strings	14	14	15
Theory	10	11	11
Voice	8	7	9
Woodwind, Brass, Percussion	11	11	11
ESM SUBTOTAL	86	86	89

UNIVERSITY OF ROCHESTER
Full-time Tenure-track Faculty

2002-03

2003-04

2004-05

SCHOOL AND DEPARTMENT

**School of Medicine
and Dentistry***

	<u>Tenured</u> Prof & Assoc Prof	<u>On-track</u> All Eligible Ranks	<u>Tenured</u> Prof & Assoc Prof	<u>On-track</u> All Eligible Ranks	<u>Tenured</u> Prof & Assoc Prof	<u>On-track</u> All Eligible Ranks
Anesthesiology	3	14	3	20	3	20
Biochemistry and Biophysics	20	4	20	5	19	5
Biomedical Engineering	1	1	2	1	2	2
Biomedical Genetics	3	4	3	6	4	5
Biostat & Comp Biology	3	4	3	7	3	12
Ctr Aging/Dev Biology	5	6	4	5	6	5
Ctr Cardiovascular Research	-	6	-	6	-	9
Ctr Oral Biology	3	2	3	2	3	3
Ctr Vaccine Biology/Immunology	4	4	4	4	4	4
Community & Preventive Medicine	5	9	4	9	4	11
Dentistry	1	10	1	16	1	19
Dermatology	2	6	2	5	2	6
Emergency Medicine	-	15	-	18	-	21
Environmental Medicine	7	8	5	8	5	10
Family Medicine	-	9	-	8	1	8
Laboratory Animal Medicine	-	3	-	3	-	2
Medicine	24	78	24	89	25	109
Microbiology & Immunology	13	5	13	6	11	9
Neurobiology & Anatomy	10	6	10	6	10	7
Neurology	10	25	12	28	13	33
Neurosurgery	1	2	2	3	2	6
Obstetrics & Gynecology	4	13	4	14	4	13
Ophthalmology	2	6	2	9	2	8
Orthopaedics	4	15	4	18	4	24
Otolaryngology	-	-	-	-	2	5
Pathology & Lab Medicine	10	19	9	16	9	20
Pediatrics	14	35	13	42	15	52
Pharmacology and Physiology	9	5	11	4	11	3
Physical Medicine/Rehabilitation	-	3	-	3	-	-
Psychiatry	7	45	7	46	6	48
Radiation Oncology	4	6	4	4	4	7
Radiology	5	18	5	23	4	28
Surgery	8	27	8	25	6	22
Urology	3	5	3	6	3	7
Subtotal	185	418	185	465	188	543

Medicine & Dentistry Subtotal	603	650	731
--	-----	-----	-----

*Faculty excluded from this report: Professors and Associate Professors in Option A, C-T, Geographic full-time Faculty and Professional Service Faculty, Service Track Faculty, Research Track Faculty

School of Nursing**	18	18	19
----------------------------	----	----	----

** Clinical faculty (non-tenure track) are not reported on this table.

	2002-03	2003-04	2004-05
TOTAL UNIVERSITY	1,090	1,141	1,223

Source: University Budget Office; School of Medicine and Dentistry Dean's Office

UNIVERSITY OF ROCHESTER
Faculty and Staff in University Divisions*
as of September 30, 2004

UNIVERSITY DIVISIONS	Full- and Part-time Active Employees		
	FT	PT	TOTAL
Central Administration	1,277	115	1,392
The College, Arts and Sciences	844	96	940
School of Engineering/Laser Lab	390	18	408
Simon Grad School of Business	113	6	119
Warner Grad School of Education	47	18	65
Eastman School of Music	216	35	251
School of Medicine & Dentistry	3,333	363	3,696
School of Nursing	90	41	131
Memorial Art Gallery	44	16	60
Strong Memorial Hospital	4,926	1,128	6,054
Vice Provost for Health Affairs	612	90	702
SUBTOTAL	11,892	1,926	13,818

STRONG HEALTH DIVISIONS	Full- and Part-time Active Employees		
	FT	PT	TOTAL
Highland Hospital	1,324	398	1,722
Highlands at Brighton	176	39	215
Visiting Nurse Service	523	276	799
SUBTOTAL	2,023	713	2,736
TOTAL	13,915	2,639	16,554

*Time-as-reported and Casual employees are excluded.

Source: Human Resources