

# University of Rochester

## 2005-06 Fact Book



### Contents

**Accreditation**  
**Organization**  
**Space**  
**Degrees**  
**Certificates**  
**Admissions**  
**Enrollment**  
**Majors**  
**Credit Hours**  
**Section Size**  
**Faculty**  
**Staff**

**Office of the Provost**  
Institutional Research  
205 Wallis Hall  
Rochester, NY 14627-0021  
585-275-2806

© 2005 University of Rochester

# University of Rochester

## Fact Book 2005-06

<http://www.rochester.edu/provost/ir/06FACTBOOK.pdf>

### Table of Contents

<b><u>Subject</u></b>	<b><u>Time Covered</u></b>	<b><u>Page</u></b>
Table of Contents	--	2
Accreditation	--	3
Organization	1 Year	4
Space	10 Years	5
Degrees Conferred	10 Years	6
Degrees by Major	3 Years	7
Certificates	3 Years	12
Admissions	10 Years	13
Enrollment by School	10 Years	14
Enrollment by School and Full-time/Part-time Status	3 Years	15
Enrollment, Gender and Ethnicity	1 Year	18
Enrollment, Geographic Origins	1 Year	19
Enrollment, Majors	3 Years	20
Courses, Credit Hours	3 Years	25
Courses, Section Size	1 Year	28
Faculty by School	10 Years	32
Faculty by Department	3 Years	33
Staff	1 Year	35

# UNIVERSITY OF ROCHESTER

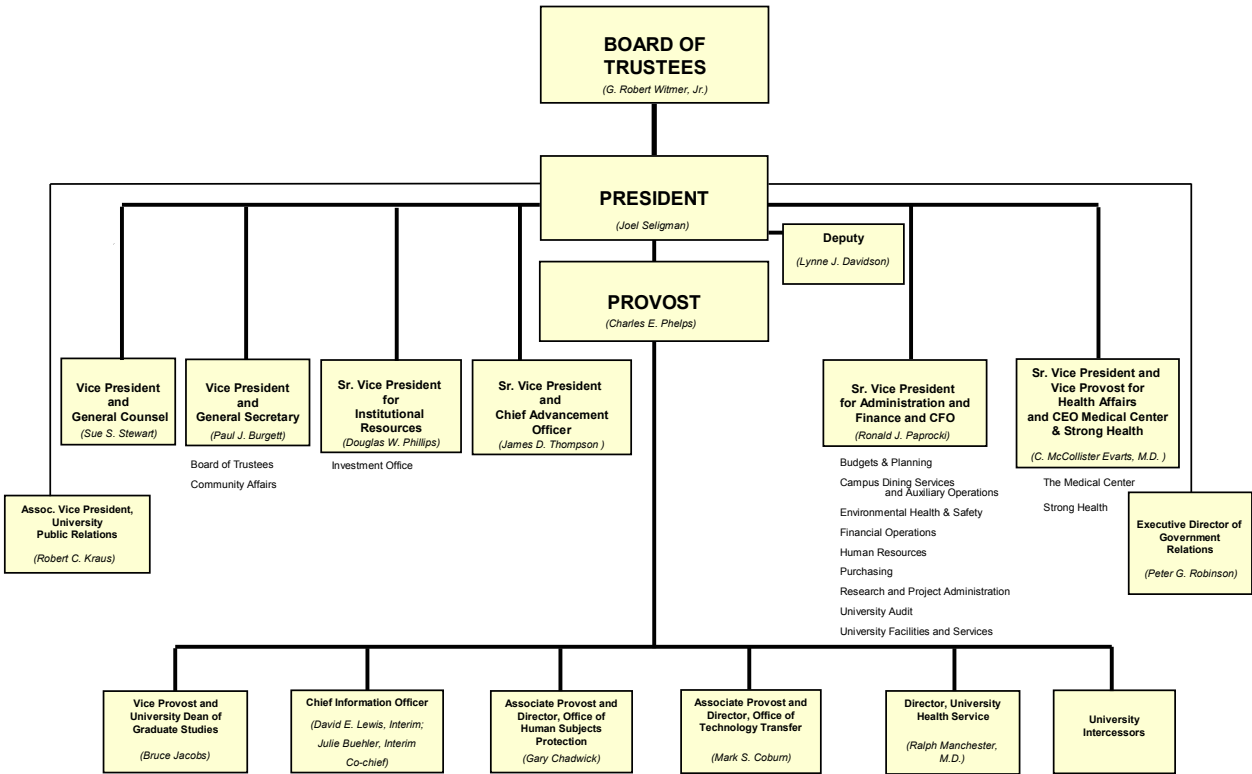
## ACCREDITATION

The University of Rochester is accredited by the **Middle States Commission on Higher Education**, <http://www.msche.org>, and the **New York State Board of Regents**, <http://www.regents.nysed.gov/>.

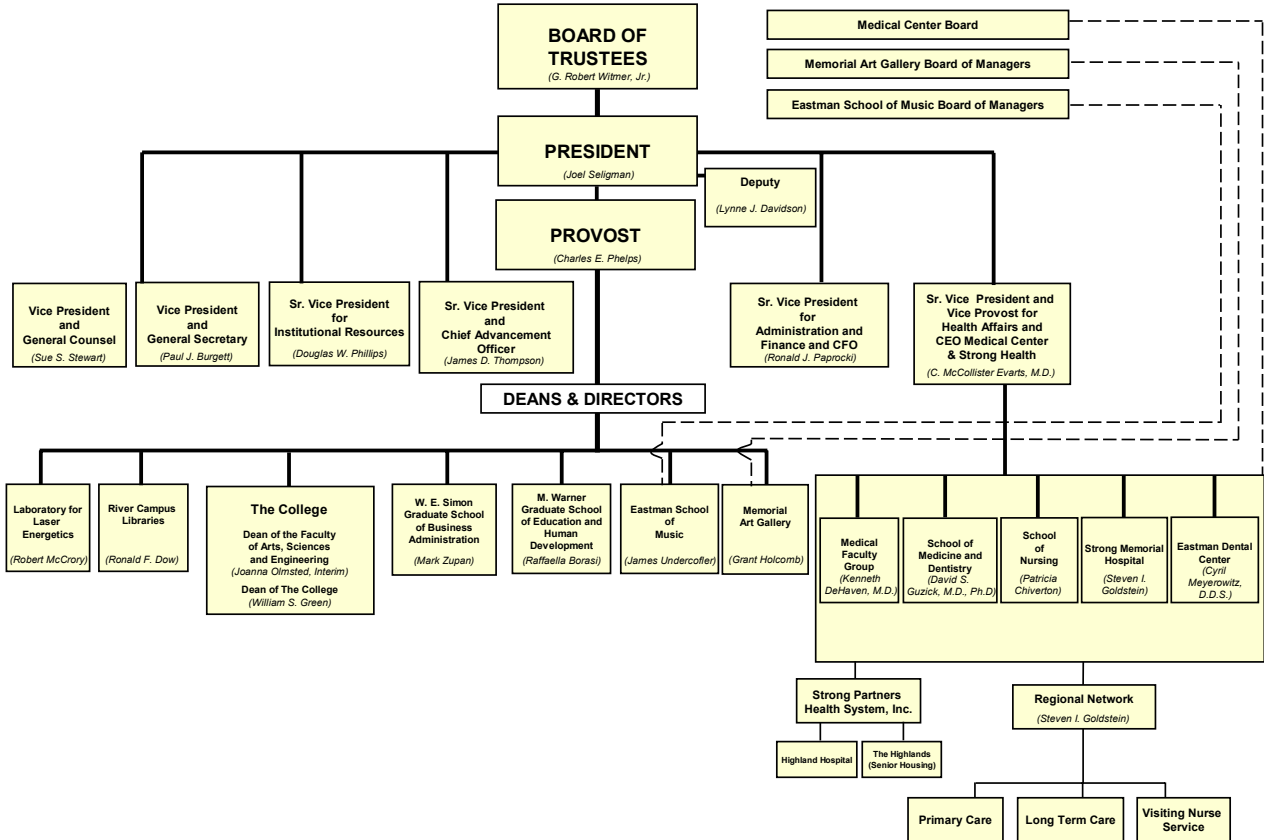
Programs within the University's Schools are accredited by the following agencies:

- Accreditation Board of Engineering and Technology, Inc.
- Accreditation Council on Graduate Medical Education
- American Academy of Microbiology
- American Association for Marriage and Family Therapy
- American Dental Association
- American Psychological Association
- Association for Clinical and Pastoral Education
- Association to Advance Collegiate Schools of Business, International
- Council for Accreditation of Counseling and Related Educational Programs
- Council on Education for Public Health
- Liaison Committee on Medical Education
- National Association of Schools of Music
- National Council for Accreditation of Teacher Education
- National League for Nursing Accrediting Commission

**UNIVERSITY OF ROCHESTER**  
Central Administrative and Support Services



**UNIVERSITY OF ROCHESTER**  
Programs and Divisions



**UNIVERSITY OF ROCHESTER**  
**Size of Campus**

	1996-97	1997-98	1998-99	1999-2000	2000-01	2001-02	2002-03	2003-04	2004-05	2005-06
Campus	Buildings	Buildings	Buildings	Buildings	Buildings	Buildings	Buildings	Buildings	Buildings	Buildings
River Campus	55	54	54	54	55	55	55	55	55	53
Medical Center	11	11	12	15	15	18	18	18	18	18
South Campus	55	55	55	55	55	55	59	59	59	59
Eastman School		6	6	6	6	5	6	6	6	7
Memorial Art Gallery		2	2	2	2	4	4	4	4	4
Eastman and MAG Campuses*	8									
Mt. Hope Campus*	10	10	10	10	10	10	8	8	8	10
Off Campus*	5	5	5	5	5	6	2	2	2	3
URMC Off Campus*	-	-	-	-	-	-	-	-	-	1
<b>UNIVERSITY TOTAL</b>	<b>144</b>	<b>143</b>	<b>144</b>	<b>147</b>	<b>148</b>	<b>153</b>	<b>152</b>	<b>152</b>	<b>152</b>	<b>155</b>

	1996-97	1997-98	1998-99	1999-2000	2000-01	2001-02	2002-03	2003-04	2004-05	2005-06
Campus	Gross Sq. Ft.	Gross Sq. Ft.	Gross Sq. Ft.	Gross Sq. Ft.	Gross Sq. Ft.	Gross Sq. Ft.	Gross Sq. Ft.	Gross Sq. Ft.	Gross Sq. Ft.	Gross Sq. Ft.
River Campus	2,701,989	2,736,853	2,732,791	2,797,970	3,476,917	3,559,028	3,545,144	3,551,925	3,528,716	3,479,076
Medical Center	3,568,415	3,622,862	3,671,545	3,927,449	4,713,086	4,976,951	4,838,345	4,852,337	4,855,381	4,913,292
South Campus	900,669	919,177	919,177	913,289	1,067,530	1,094,888	1,111,007	1,110,593	1,110,593	1,188,895
Eastman School		347,784	347,784	347,784	416,646	407,283	534,494	536,064	563,138	537,734
Memorial Art Gallery		95,227	95,227	95,227	114,083	132,878	132,878	132,878	132,878	132,879
Eastman and MAG Campuses*	441,395									
Mt. Hope Campus	134,697	189,910	189,910	170,124	194,971	202,918	198,379	198,363	198,363	218,964
Off Campus	20,907	20,907	20,907	20,754	22,279	25,623	4,087	4,087	4,087	14,242
URMC Off Campus	-	-	-	-	-	-	-	-	-	86,663
<b>UNIVERSITY TOTAL</b>	<b>7,768,072</b>	<b>7,932,720</b>	<b>7,977,341</b>	<b>8,272,597</b>	<b>10,005,512</b>	<b>10,399,569</b>	<b>10,364,334</b>	<b>10,386,247</b>	<b>10,393,156</b>	<b>10,571,745</b>

**Campus Inclusions (2005-06 definitions):**

**River Campus** is the primary campus for The College, Simon School (Graduate Business) and Warner School (Graduate Education).

**Medical Center** includes main school, research, hospital buildings, Annex, Ambulatory Care Facility, Parking Garage, Goler House, Central Utilities, Eastman Dental Center, Kindercare Daycare.

**South Campus** includes Nuclear Structure Research Laboratory, Laboratory for Laser Energetics, Center for Optoelectronics and Imaging, River Road Buildings, Graduate Living Center, University Park, Whipple Park, Intercampus Drive.

**Mt. Hope** addresses: 575, 590, 630, 668, 685, 692, 1351, 1510; Towne House East & West.

**Off Campus** includes Mees Observatory, Gannett House; Medical Center Off Campus is Cardiovascular Research Institute.

\*Eastman School and Memorial Art Gallery were combined for reporting purposes in 1996-97.

Source: University Facilities, October 2005

## UNIVERSITY OF ROCHESTER Degrees Conferred

### Bachelors

	1995-96	1996-97	1997-98	1998-99	1999-00	2000-01	2001-02	2002-03	2003-04	2004-05
Arts & Sciences	930	840	903	852	842	750	778	893	838	845
Engineering & Applied Sciences	146	137	95	104	106	95	135	153	144	126
<b>The College Subtotal</b>	<b>1,076</b>	<b>977</b>	<b>998</b>	<b>956</b>	<b>948</b>	<b>845</b>	<b>913</b>	<b>1,046</b>	<b>982</b>	<b>971</b>
University College*	2	-	1	-	-	1	-	-	-	-
Eastman School of Music	97	102	99	119	101	90	121	118	108	87
School of Nursing	93	85	101	64	65	57	60	53	84	76
<b>University Total</b>	<b>1,268</b>	<b>1,164</b>	<b>1,199</b>	<b>1,139</b>	<b>1,114</b>	<b>993</b>	<b>1,094</b>	<b>1,217</b>	<b>1,174</b>	<b>1,134</b>

### Masters

	1995-96	1996-97	1997-98	1998-99	1999-00	2000-01	2001-02	2002-03	2003-04	2004-05
Arts & Sciences	135	177	155	128	147	126	99	103	125	134
Engineering & Applied Sciences	72	79	58	53	59	57	67	54	93	68
<b>The College Subtotal</b>	<b>207</b>	<b>256</b>	<b>213</b>	<b>181</b>	<b>206</b>	<b>183</b>	<b>166</b>	<b>157</b>	<b>218</b>	<b>202</b>
Simon Graduate School of Business	401	408	427	470	489	434	421	450	406	325
Warner Graduate School of Education & Human Development	73	84	96	63	55	53	61	71	64	97
Eastman School of Music	107	80	97	96	83	87	92	102	102	83
School of Medicine & Dentistry	65	66	82	79	74	84	61	97	92	108
School of Nursing	61	66	67	52	41	49	30	39	44	54
<b>University Total</b>	<b>914</b>	<b>960</b>	<b>982</b>	<b>941</b>	<b>948</b>	<b>890</b>	<b>831</b>	<b>916</b>	<b>926</b>	<b>869</b>

### Doctorates

	1995-96	1996-97	1997-98	1998-99	1999-00	2000-01	2001-02	2002-03	2003-04	2004-05
Arts & Sciences	130	98	105	79	95	76	67	71	79	84
Engineering & Applied Sciences	39	31	28	31	30	30	16	24	24	33
<b>The College Subtotal</b>	<b>169</b>	<b>129</b>	<b>133</b>	<b>110</b>	<b>125</b>	<b>106</b>	<b>83</b>	<b>95</b>	<b>103</b>	<b>117</b>
Simon Graduate School of Business	5	7	7	2	4	3	7	4	7	4
Warner Graduate School of Education & Human Development	15	8	12	4	7	14	9	5	6	13
Eastman School of Music	26	29	26	26	36	24	44	33	30	36
School of Medicine & Dentistry	137	123	143	138	136	130	147	129	159	148
<i>Subtotal Doctorates</i>	<i>42</i>	<i>31</i>	<i>39</i>	<i>39</i>	<i>34</i>	<i>45</i>	<i>38</i>	<i>49</i>	<i>56</i>	<i>47</i>
<i>Subtotal MD's</i>	<i>95</i>	<i>92</i>	<i>104</i>	<i>99</i>	<i>102</i>	<i>85</i>	<i>109</i>	<i>80</i>	<i>103</i>	<i>101</i>
School of Nursing	2	3	3	5	5	4	4	4	7	2
<b>University Total</b>	<b>354</b>	<b>299</b>	<b>324</b>	<b>285</b>	<b>313</b>	<b>281</b>	<b>294</b>	<b>270</b>	<b>312</b>	<b>320</b>

### All Degrees

	1995-96	1996-97	1997-98	1998-99	1999-00	2000-01	2001-02	2002-03	2003-04	2004-05
Arts & Sciences	1,195	1,115	1,163	1,059	1,084	952	944	1,067	1,042	1,063
Engineering & Applied Sciences	257	247	181	188	195	182	218	231	261	227
<b>The College Subtotal</b>	<b>1,452</b>	<b>1,362</b>	<b>1,344</b>	<b>1,247</b>	<b>1,279</b>	<b>1,134</b>	<b>1,162</b>	<b>1,298</b>	<b>1,303</b>	<b>1,290</b>
Simon Graduate School of Business	406	415	434	472	493	437	428	454	413	329
Warner Graduate School of Education & Human Development	88	92	108	67	62	67	70	76	70	110
University College	2	-	1	-	-	1	-	-	-	-
Eastman School of Music	230	211	222	241	220	201	257	253	240	206
School of Medicine & Dentistry	202	189	225	217	210	214	208	226	251	256
School of Nursing	156	154	171	121	111	110	94	96	135	132
<b>University Total</b>	<b>2,536</b>	<b>2,423</b>	<b>2,505</b>	<b>2,365</b>	<b>2,375</b>	<b>2,164</b>	<b>2,219</b>	<b>2,403</b>	<b>2,412</b>	<b>2,323</b>

\*University College no longer exists. The degrees granted represent the final program completers.

Source: Student Information System

**UNIVERSITY OF ROCHESTER**

**Degrees Conferred - Undergraduate Majors Completed**

By School, Double Majors Counted Twice\*

	2002-03	2003-04	2004-05
<b>THE COLLEGE</b>			
<b>Arts &amp; Sciences</b>			
African & African-American Studies	2	2	2
American Sign Language	6	9	10
Anthropology	10	11	11
<b>Art &amp; Art History</b>	<b>12</b>	<b>20</b>	<b>11</b>
Art History	6	8	5
Studio Arts	6	12	6
<b>Biological Sciences</b>	<b>98</b>	<b>80</b>	<b>81</b>
Biochemistry	14	7	13
Cell & Development	9	13	11
Ecology & Evol Biol	6	10	12
Microbiology	25	17	5
Molecular Genetics	17	11	15
Neuroscience	27	22	25
Biology	66	64	45
Brain & Cognitive Science	23	20	28
Chemistry	17	16	22
Clinical & Social Psychology	142	142	136
Cognitive Science	2	-	-
Computer Science	46	51	37
<b>Earth &amp; Environmental Sciences</b>	<b>12</b>	<b>10</b>	<b>8</b>
Environmental Sciences	5	1	-
Environmental Studies	2	-	5
Geological Sciences	5	9	3
Economics	164	127	146
English	65	60	80
Film and Media Studies	7	11	16
Health & Society	36	30	30
History	48	53	60
Interdepartmental	10	11	11
Linguistics	4	6	10
<b>Mathematics</b>	<b>56</b>	<b>55</b>	<b>48</b>
Applied Mathematics	13	19	6
Mathematics	43	35	41
Mathematics-Statistics	-	1	1
<b>Modern Languages &amp; Cultures</b>	<b>49</b>	<b>33</b>	<b>48</b>
Comparative Literature	1	-	4
French	10	8	2
German	4	3	6
Japanese	11	4	10
Russian	4	4	4
Spanish	19	14	22
Music	11	8	6
Philosophy	8	7	20
<b>Physics and Astronomy</b>	<b>22</b>	<b>14</b>	<b>19</b>
Physics	15	12	16
Physics and Astronomy	7	2	3
Political Science	107	109	105
<b>Religion &amp; Classics</b>	<b>43</b>	<b>38</b>	<b>23</b>
Classics	5	2	1
Religious Studies	38	36	22
Russian Studies	-	4	3
Statistics	12	8	15
Women's Studies	5	3	3
Other: General Science, retroactive	1	-	-
<b>SUBTOTAL</b>	<b>1,084</b>	<b>1,002</b>	<b>1,034</b>

**UNIVERSITY OF ROCHESTER**  
**Degrees Conferred - Undergraduate Majors Completed**  
 By School, Double Majors Counted Twice\*

	2002-03	2003-04	2004-05
<b>THE COLLEGE</b>			
<b>School of Engineering and Applied Sciences</b>			
Biomedical Engineering	36	37	31
Chemical Engineering	32	17	13
Electrical and Computer Engineering	24	35	29
Electrical Engineering	5	-	-
Engineering Science	1	4	4
Geomechanics	1	2	2
Interdepartmental Engineering	1	2	-
Mechanical Engineering	28	23	25
Optics	25	24	22
<b>SUBTOTAL</b>	153	144	126
<b>THE COLLEGE SUBTOTAL</b>	1,237	1,146	1,160
<b>Eastman School of Music</b>			
Applied Music	97	89	76
Composition	6	5	2
Jazz Studies & Contemporary Media	11	5	9
Music Education - General	3	1	2
Music Education - Instrumental	9	17	7
Music Education - Vocal	2	5	-
Music Theory	1	2	-
Musical Arts	-	2	1
<b>SUBTOTAL</b>	129	126	97
<b>School of Nursing</b>	53	84	76
<b>TOTAL UNIVERSITY</b>	1,419	1,356	1,333

\*Totals on this table are greater than the total number of degrees conferred because double majors are reported here.  
 The University awards the following Bachelor's Degrees: BA, BS, BM

Source: IR Office Report from Student Information System



**UNIVERSITY OF ROCHESTER**  
**Degrees Conferred - Graduate Majors Completed**  
**By School, Double Majors Counted Twice\***

	2002-03		2003-04		2004-05	
	Mast.	Doc.	Mast.	Doc.	Mast.	Doc.
<b>THE COLLEGE - Arts and Sciences</b>						
Biology	5	7	5	6	10	5
Brain & Cognitive Sciences	6	7	4	2	3	1
Chemistry	10	13	21	10	20	4
Clinical & Social Psychology	6	2	8	10	8	4
Computer Science	11	7	7	10	13	9
Earth & Environ Sciences (Geological)	2	1	2	2	-	1
Economics	12	9	20	4	8	16
English	16	7	18	8	22	3
History	1	3	4	4	1	6
Interdepartmental Studies	-	-	1	-	-	-
Linguistics	1	1	-	-	-	-
Mathematics	5	-	7	4	8	2
Modern Languages & Cultures	1	-	1	1	2	-
Comparative Literature	1	-	1	1	2	-
Philosophy	2	1	4	1	2	3
Physics & Astronomy	11	8	18	12	25	22
Physics	11	7	18	12	25	21
Physics & Astronomy	-	1	-	-	-	1
Political Science	7	4	5	2	7	5
Visual and Cultural Studies	7	4	1	3	5	3
<b>SUBTOTAL</b>	<b>103</b>	<b>74</b>	<b>126</b>	<b>79</b>	<b>134</b>	<b>84</b>
<b>THE COLLEGE - School of Engineering and Applied Sciences</b>						
Biomedical Engineering	10	3	11	1	7	2
Chemical Engineering	4	-	24	1	14	1
Electrical & Computer Engineering	1	-	6	-	5	-
Electrical Engineering	12	7	10	10	24	11
Materials Science	1	3	6	1	1	4
Mechanical Engineering	8	2	15	1	6	4
Optics	18	9	21	10	11	11
<b>SUBTOTAL</b>	<b>54</b>	<b>24</b>	<b>93</b>	<b>24</b>	<b>68</b>	<b>33</b>
<b>THE COLLEGE TOTAL</b>	<b>157</b>	<b>98</b>	<b>219</b>	<b>103</b>	<b>202</b>	<b>117</b>
<b>Simon Graduate School of Business Administration</b>						
Master of Science	25	-	19	-	20	-
Business Administration	298	4	277	7	252	4
Business Admin. - Executive Development	39	-	34	-	19	-
Business Admin. - Bern, Switzerland	50	-	54	-	34	-
Business Admin. - Nijenrode, Netherlands	38	-	22	-	-	-
<b>SUBTOTAL</b>	<b>450</b>	<b>4</b>	<b>406</b>	<b>7</b>	<b>325</b>	<b>4</b>

**UNIVERSITY OF ROCHESTER**  
**Degrees Conferred - Graduate Majors Completed**  
**By School, Double Majors Counted Twice\***

	2002-03		2003-04		2004-05	
	Mast.	Doc.	Mast.	Doc.	Mast.	Doc.
<b>Warner Graduate School of Education and Human Development</b>						
C&HD: Counseling MS/EDD	-	-	-	1	-	-
Counseling & Human Develop	3	1	-	-	-	-
Curriculum Elementary	8	-	1	-	-	-
Curriculum General	2	-	-	-	-	-
Curriculum Secondary English	2	-	1	-	-	-
Curriculum Secondary Math	1	-	-	-	-	-
Curriculum Secondary Soc Stud	4	-	1	-	-	-
Education Administration	1	2	1	-	-	-
Human Devel General	1	-	-	-	-	-
PHD Counseling	-	-	-	1	-	-
Teaching in English	1	-	-	-	-	-
Administration (GEN)	-	-	-	-	-	4
Administration (SAS)	-	-	-	-	-	1
Higher Education	1	1	-	1	-	2
Human Devel In Ed Contexts	-	-	-	1	-	3
Teaching Curriculum & Change	-	1	-	2	-	3
MAT English (7-12)	-	-	1	-	-	-
MAT Social St (7-12)	-	-	-	-	2	-
ME Earth Sc (7-12)	-	-	-	-	1	-
ME Social St (7-12)	-	-	-	-	2	-
ME Elementary Prof	-	-	-	-	1	-
MS Administration (CATH)	-	-	2	-	2	-
MS Administration (GEN)	1	-	-	-	-	-
MS Administration (SAS)	2	-	3	-	4	-
MS Adol Ed: Chemistry	-	-	-	-	1	-
MS Biology (5-12)	-	-	1	-	2	-
MS Biology (7-12)	4	-	2	-	2	-
MS Chemistry (5-12)	1	-	-	-	-	-
MS Chemistry (7-12)	2	-	-	-	-	-
MS Community Counseling	2	-	5	-	6	-
MS Community Counseling (3+2)	1	-	-	-	-	-
MS Dis. Elementary (1-6) 2nd C	-	-	1	-	-	-
MS Dis Soc St (7-12) 2nd Cert	-	-	-	-	1	-
MS Early Childhood (B-2)	-	-	-	-	1	-
MS Early Childhood/Inclusion (B-2)	-	-	1	-	-	-
MS Elementary (1-6)	-	-	5	-	2	-
MS Elementary Inclusion Prof	-	-	-	-	1	-
MS Elementary Inclusion (1-6)	-	-	-	-	1	-
MS English (7-12)	-	-	4	-	1	-
MS Higher Ed	4	-	5	-	8	-
MS Human Development	6	-	1	-	5	-
MS in Adol. Ed.: Chemistry	-	-	1	-	-	-
MS Literacy B-6	-	-	1	-	1	-
MS Math (7-12)	-	-	-	-	2	-
MS Math/Inclusion (5-12)	-	-	-	-	1	-
MS Math Prof	-	-	-	-	1	-
MS Physics (7-12)	1	-	-	-	1	-
MS School Counseling	6	-	16	-	21	-
MS School Counseling (3+2)	2	-	-	-	1	-
MS School Counseling (Comm)	1	-	1	-	7	-
MS Social St (5-12)	-	-	-	-	1	-
MS Social St/Inclusion (5-12)	-	-	-	-	1	-
MS Social St Prof	-	-	-	-	2	-
MS Spanish (5-12)	-	-	-	-	1	-
MS Spanish (7-12)	3	-	2	-	2	-
MS Spanish (7-12T)	-	-	-	-	1	-
MS Spanish Prof	-	-	-	-	2	-
MS Teaching & Curriculum	7	-	7	-	6	-
MS Tchg & Curr/Spec TESOL	-	-	-	-	1	-
MS TESOL	4	-	1	-	2	-
<b>SUBTOTAL</b>	<b>71</b>	<b>5</b>	<b>64</b>	<b>6</b>	<b>97</b>	<b>13</b>

**UNIVERSITY OF ROCHESTER**  
**Degrees Conferred - Graduate Majors Completed**  
**By School, Double Majors Counted Twice\***

	2002-03		2003-04		2004-05	
	Mast.	Doc.	Mast.	Doc.	Mast.	Doc.
<b>Eastman School of Music</b>						
Composition	4	-	4	-	2	4
Conducting	1	2	7	1	-	1
Jazz Studies & Contemp Media	6	-	3	-	4	-
Jazz Studies & Contemp Media-Writing	3	-	2	-	-	-
Music Education	13	2	9	2	6	1
Music Theory	7	-	3	6	2	4
Musicology	3	1	2	4	2	1
Opera - Stage Directing	-	-	-	-	1	-
Performance & Literature	62	25	66	18	63	23
Piano Accompanying & Chamber Music	1	3	2	-	2	2
Theory Pedagogy	3	-	5	-	1	-
<b>SUBTOTAL</b>	<b>103</b>	<b>33</b>	<b>103</b>	<b>31</b>	<b>83</b>	<b>36</b>

**School of Medicine and Dentistry**

Anatomy	-	2	-	-	1	-
Biochemistry	6	4	14	10	10	6
Biophysics	3	6	4	5	5	3
Dental Science	-	-	2	-	-	-
Genetics	-	2	6	3	5	1
Health Services Research	-	2	-	1	-	4
Marriage & Family Therapy	-	-	4	-	14	-
Microbiology & Immunology	24	10	14	10	13	9
Neuroscience	8	3	3	5	7	5
Pathology	13	8	5	13	7	5
Pharmacology	8	6	6	5	9	5
Public Health	23	-	6	-	10	-
Public Health - Clinical Investigation	-	-	18	-	17	-
Statistics	3	4	2	-	2	-
Toxicology	9	2	8	4	8	9
<b>SUBTOTAL without MDs</b>	<b>97</b>	<b>49</b>	<b>92</b>	<b>56</b>	<b>108</b>	<b>47</b>
MD's (First Professional)	-	80	-	103	-	101
<b>SUBTOTAL with MDs</b>	<b>97</b>	<b>129</b>	<b>92</b>	<b>159</b>	<b>108</b>	<b>148</b>

**School of Nursing**

Acute Care Cardiovascular	4	-	2	-	-	-
Acute Critical Care Nurse Practitioner	2	-	3	-	11	-
Adult Nurse Practitioner	10	-	8	-	-	-
Care of Children & Families	5	-	11	-	8	-
Family Nurse Practitioner	10	-	12	-	11	-
Gerontological Nurse Practitioner	-	-	-	-	1	-
<b>Leadership in Health Care Sys</b>	<b>-</b>	<b>-</b>	<b>-</b>	<b>-</b>	<b>21</b>	<b>-</b>
Disaster Response & Emer Prepar	-	-	-	-	7	-
Health Promo, Edu & Tech	-	-	-	-	14	-
Neonatal Nurse Practitioner	1	-	1	-	-	-
Nursing	-	4	-	7	-	2
Ped Nur Prac/Psych Mental Health	1	-	1	-	-	-
Psych Mental Health	6	-	6	-	2	-
<b>SUBTOTAL</b>	<b>39</b>	<b>4</b>	<b>44</b>	<b>7</b>	<b>54</b>	<b>2</b>

	2002-03		2003-04		2004-05	
	Mast.	Doc.	Mast.	Doc.	Mast.	Doc.
<b>TOTAL UNIVERSITY</b>	<b>917</b>	<b>273</b>	<b>928</b>	<b>313</b>	<b>869</b>	<b>320</b>

\*Totals on this table are greater than the total number of degrees conferred because double majors are reported here.

The University awards the following Master's and Doctorate degrees:

MA, MS, MM, MPH, MBA, MAT, PhD, EdD, DMA

Source: IR Office Report from Student Information System

**UNIVERSITY OF ROCHESTER**  
**Certificates Conferred**

	<b>2002-03</b>	<b>2003-04</b>	<b>2004-05</b>
<b>With Bachelor's Degrees</b>			
Actuarial Studies	8	6	9
Biotechnology	3	3	-
International Relations	9	11	16
Management Studies	163	145	133
Mathematical Modeling in Political Science & Economics	1	2	4
Polish & Central European Studies	3	2	1
Citation for Achievement in College Leadership	-	-	5
<b>Postbaccalaureate</b>			
Music	-	9	11
<b>Post Master's</b>			
Nursing	11	4	2
<b>First-professional</b>			
Dentistry	41	38	50

Sources: College Center for Academic Support; School of Nursing, Eastman Dental Center; Institutional Research

**UNIVERSITY OF ROCHESTER**  
**Admissions Activity**

Fall	1996	1997	1998	1999	2000	2001	2002	2003	2004	2005
------	------	------	------	------	------	------	------	------	------	------

**College: First Time Full-time Freshmen (Arts & Sciences, Engineering & Applied Sciences)**

Number of Applicants	9,057	9,147	8,782	8,656	10,082	9,579	8,682	10,486	11,099	11,293
Number Offered	4,854	5,166	5,189	5,714	5,086	5,041	4,846	5,096	5,292	5,380
Entered	904	799	968	1,087	930	1,008	934	976	971	997

**University: First Time Full-time Freshmen (College and Eastman School of Music)**

Number of Applicants	9,970	9,983	9,760	9,623	11,133	10,602	9,606	11,381	12,023	12,262
Number Offered	5,138	5,402	5,771	5,975	5,335	5,294	5,091	5,385	5,541	5,607
Entered	1,037	908	1,077	1,221	1,051	1,117	1,063	1,124	1,091	1,114

**University: Graduate Students**

Number of Applicants	6,822	6,839	7,103	6,785	7,798	7,704	9,229	10,020	6,829	6,606
Number Offered	1,956	1,908	1,902	1,723	1,855	1,945	1,804	1,981	1,785	1,769
Entered	977	945	947	971	860	1,007	911	997	952	947

**First Professional Students (M.D. Degree)**

Number of Applicants	4,089	3,914	7,018	5,865	5,111	4,305	3,845	3,969	3,975	4,243
Number Offered	248	276	248	288	252	280	281	275	272	260
Entered	99	100	100	100	98	100	100	100	100	100

Source: Admissions Offices; Graduate Dean

**UNIVERSITY OF ROCHESTER**  
**Enrollment - Total (Full-time and Part-time Students) Fall Semester**

**Undergraduate**

	1996-97	1997-98	1998-99	1999-00	2000-01	2001-02	2002-03	2003-04	2004-05	2005-06
Arts & Sciences*	3,957	3,695	3,532	3,527	3,540	3,690	3,702	3,625	3,629	3,699
Engineering & Applied Sciences**	220	208	218	208	222	280	269	237	217	195
<b>The College Subtotal</b>	<b>4,177</b>	<b>3,903</b>	<b>3,750</b>	<b>3,735</b>	<b>3,762</b>	<b>3,970</b>	<b>3,971</b>	<b>3,862</b>	<b>3,846</b>	<b>3,894</b>
Eastman School of Music	491	462	468	485	481	475	482	480	480	501
School of Nursing	217	189	159	145	143	122	104	119	122	137
<b>Subtotal</b>	<b>4,885</b>	<b>4,554</b>	<b>4,377</b>	<b>4,365</b>	<b>4,386</b>	<b>4,567</b>	<b>4,557</b>	<b>4,461</b>	<b>4,448</b>	<b>4,532</b>
Non-matriculated	159	146	126	135	138	149	173	149	113	194
<b>Total</b>	<b>5,044</b>	<b>4,700</b>	<b>4,503</b>	<b>4,500</b>	<b>4,524</b>	<b>4,716</b>	<b>4,730</b>	<b>4,610</b>	<b>4,561</b>	<b>4,726</b>

**Graduate and Professional Students**

	1996-97	1997-98	1998-99	1999-00	2000-01	2001-02	2002-03	2003-04	2004-05	2005-06
Arts & Sciences	766	721	660	632	600	638	627	671	650	663
Engineering & Applied Sciences	255	244	248	238	225	220	271	308	298	322
<b>The College Subtotal</b>	<b>1,021</b>	<b>965</b>	<b>908</b>	<b>870</b>	<b>825</b>	<b>858</b>	<b>898</b>	<b>979</b>	<b>948</b>	<b>985</b>
Simon Graduate School of Business	688	748	764	780	727	744	804	732	572	513
Warner Graduate School of Education & Human Development	244	236	204	226	259	274	293	310	333	411
Eastman School of Music	341	355	329	315	331	334	359	392	387	407
School of Medicine & Dentistry, M.D.	405	419	419	412	412	418	417	439	424	414
School of Medicine & Dentistry, M.S. & Ph.D.	347	357	342	371	380	433	451	484	517	554
School of Nursing	241	199	171	158	157	140	149	129	156	164
<b>Subtotal</b>	<b>3,287</b>	<b>3,279</b>	<b>3,137</b>	<b>3,132</b>	<b>3,091</b>	<b>3,201</b>	<b>3,371</b>	<b>3,465</b>	<b>3,337</b>	<b>3,448</b>
Non-matriculated	530	550	605	515	582	573	524	534	555	556
<b>Total</b>	<b>3,817</b>	<b>3,829</b>	<b>3,742</b>	<b>3,647</b>	<b>3,673</b>	<b>3,774</b>	<b>3,895</b>	<b>3,999</b>	<b>3,892</b>	<b>4,004</b>

**All**

	1996-97	1997-98	1998-99	1999-00	2000-01	2001-02	2002-03	2003-04	2004-05	2005-06
Arts & Sciences	4,723	4,416	4,192	4,159	4,140	4,328	4,329	4,296	4,279	4,362
Engineering & Applied Sciences	475	452	466	446	447	500	540	545	515	517
<b>The College Subtotal</b>	<b>5,198</b>	<b>4,868</b>	<b>4,658</b>	<b>4,605</b>	<b>4,587</b>	<b>4,828</b>	<b>4,869</b>	<b>4,841</b>	<b>4,794</b>	<b>4,879</b>
Simon Graduate School of Business	688	748	764	780	727	744	804	732	572	513
Warner Graduate School of Education & Human Development	244	236	204	226	259	274	293	310	333	411
Eastman School of Music	832	817	797	800	812	809	841	872	867	908
School of Medicine & Dentistry, M.D.	405	419	419	412	412	418	417	439	424	414
School of Medicine & Dentistry, M.S. & Ph.D.	347	357	342	371	380	433	451	484	517	554
School of Nursing	458	388	330	303	300	262	253	248	278	301
<b>University, Subtotal</b>	<b>8,172</b>	<b>7,833</b>	<b>7,514</b>	<b>7,497</b>	<b>7,477</b>	<b>7,768</b>	<b>7,928</b>	<b>7,926</b>	<b>7,785</b>	<b>7,980</b>
Non-matriculated	689	696	731	650	720	722	697	683	668	750
<b>University Total</b>	<b>8,861</b>	<b>8,529</b>	<b>8,245</b>	<b>8,147</b>	<b>8,197</b>	<b>8,490</b>	<b>8,625</b>	<b>8,609</b>	<b>8,453</b>	<b>8,730</b>

\*Older dates may include a small number of students enrolled in University College (a unit which has been phased out).

\*\*This table shows only Junior and Senior Engineering majors in Engineering & Applied Sciences. Reporting in some years past also included Freshman and Sophomore intended Engineering majors.

Source: UR-10 Reports

# UNIVERSITY OF ROCHESTER

## Enrollment - By School, Showing Full-time, Part-time Status

UNDERGRADUATES	Fall 2003			Fall 2004			Fall 2005		
	FT	PT	Total	FT	PT	Total	FT	PT	Total
Arts & Sciences	3,586	39	3,625	3,589	40	3,629	3,663	36	3,699
Engineering & Applied Sciences	235	2	237	213	4	217	195	-	195
<b>SUBTOTAL COLLEGE</b>	3,821	41	3,862	3,802	44	3,846	3,858	36	3,894
Eastman School of Music	478	2	480	479	1	480	498	3	501
Nursing	55	64	119	59	63	122	64	73	137
<b>SUBTOTAL</b>	4,354	107	4,461	4,340	108	4,448	4,420	112	4,532
Non-matriculated	7	142	149	7	106	113	15	179	194
<b>TOTAL UNIVERSITY</b>	4,361	249	4,610	4,347	214	4,561	4,435	291	4,726

UNDERGRADUATES	Spring 2004			Spring 2005		
	FT	PT	Total	FT	PT	Total
Arts & Sciences	3,450	38	3,488	3,517	45	3,562
Engineering & Applied Sciences	245	7	252	224	2	226
<b>SUBTOTAL COLLEGE</b>	3,695	45	3,740	3,741	47	3,788
Eastman School of Music	452	1	453	473	2	475
Nursing	50	68	118	55	64	119
<b>SUBTOTAL</b>	4,197	114	4,311	4,269	113	4,382
Non-matriculated	4	111	115	2	119	121
<b>TOTAL UNIVERSITY</b>	4,201	225	4,426	4,271	232	4,503

Source: UR-10 Parts IA and IIA: 11/12/03, 10/8/04, 10/14/05 for Fall; UR-20 Parts IA and IIA: 2/20/04 and 2/18/05 for Spring.

# UNIVERSITY OF ROCHESTER

## Enrollment - By School, Showing Full-time, Part-time Status

GRADUATE STUDENTS	Fall 2003			Fall 2004			Fall 2005		
	FT	PT	Total	FT	PT	Total	FT	PT	Total
Arts & Sciences	651	20	671	637	13	650	656	7	663
Engineering & Applied Sciences	283	25	308	271	27	298	295	27	322
<b>SUBTOTAL COLLEGE</b>	934	45	979	908	40	948	951	34	985
Simon School	593	139	732	457	115	572	367	146	513
Warner School	107	203	310	116	217	333	129	282	411
Eastman School of Music	362	30	392	355	32	387	354	53	407
Medicine & Dentistry (MD)	439	-	439	424	-	424	414	-	414
Medicine & Dentistry (Other)	405	79	484	432	85	517	473	81	554
Nursing	40	89	129	40	116	156	37	127	164
<b>SUBTOTAL</b>	2,880	585	3,465	2,732	605	3,337	2,725	723	3,448
Non-matriculated (includes Eastman Dental Center)	40	521	561	57	498	555	94	462	556
<b>TOTAL UNIVERSITY</b>	2,920	1,106	4,026	2,789	1,103	3,892	2,819	1,185	4,004

GRADUATE STUDENTS	Spring 2004			Spring 2005		
	FT	PT	Total	FT	PT	Total
Arts & Sciences	622	20	642	615	11	626
Engineering & Applied Sciences	269	24	293	261	22	283
<b>SUBTOTAL COLLEGE</b>	891	44	935	876	33	909
Simon School - Winter Quarter	645	151	796	519	144	663
Warner School	107	205	312	117	237	354
Eastman School of Music	338	26	364	342	29	371
Medicine & Dentistry (MD)	437	-	437	411	-	411
Medicine & Dentistry (Other)	393	86	479	412	91	503
Nursing	77	84	161	51	135	186
<b>SUBTOTAL</b>	2,888	596	3,484	2,728	669	3,397
Non-matriculated (includes Eastman Dental Center)	32	398	430	54	395	449
<b>TOTAL UNIVERSITY</b>	2,920	994	3,914	2,782	1,064	3,846

GRADUATE STUDENTS	Simon Spring Qtr 2004			Simon Spring Qtr 2005		
	FT	PT	Total	FT	PT	Total
Simon School - Spring Quarter	655	151	806	506	143	649
Non-matriculated - Simon Spring Quarter	-	110	110	-	106	106
<b>TOTAL UNIVERSITY</b>	655	261	916	506	249	755

Source: UR-10 Parts IA and IIA: 11/12/03, 10/8/04, 10/14/05 for Fall; UR-20 Parts IA and IIA: 2/20/04 and 2/18/05 for Spring.

Simon Spring Quarter UR16B & 26B, Part IV & V (end of term) 5/28/04, 6/15/05.

Note that Simon School Fall Quarter is not as far into its quarter session as other schools are into the semester calendar. Therefore, numbers are not necessarily representative of the outcome of Simon Fall quarterly activity.



# UNIVERSITY OF ROCHESTER

## Enrollment - By School, Showing Full-time, Part-time Status

ALL STUDENTS	Fall 2003			Fall 2004			Fall 2005		
	FT	PT	Total	FT	PT	Total	FT	PT	Total
Arts & Sciences	4,237	59	4,296	4,226	53	4,279	4,319	43	4,362
Engineering & Applied Sciences	518	27	545	484	31	515	490	27	517
<b>SUBTOTAL COLLEGE</b>	4,755	86	4,841	4,710	84	4,794	4,809	70	4,879
Simon School	593	139	732	457	115	572	367	146	513
Warner School	107	203	310	116	217	333	129	282	411
Eastman School of Music	840	32	872	834	33	867	852	56	908
Medicine & Dentistry (MD)	439	-	439	424	-	424	414	-	414
Medicine & Dentistry (Other)	405	79	484	432	85	517	473	81	554
Nursing	95	153	248	99	179	278	101	200	301
<b>SUBTOTAL</b>	7,234	692	7,926	7,072	713	7,785	7,145	835	7,980
Non-matriculated	47	663	710	64	604	668	109	641	750
<b>TOTAL UNIVERSITY</b>	7,281	1,355	8,636	7,136	1,317	8,453	7,254	1,476	8,730

ALL STUDENTS	Spring 2004			Spring 2005		
	FT	PT	Total	FT	PT	Total
Arts & Sciences	4,072	58	4,130	4,132	56	4,188
Engineering & Applied Sciences	514	31	545	485	24	509
<b>SUBTOTAL COLLEGE</b>	4,586	89	4,675	4,617	80	4,697
Simon School	645	151	796	519	144	663
Warner School	107	205	312	117	237	354
Eastman School of Music	790	27	817	815	31	846
Medicine & Dentistry (MD)	437	-	437	411	-	411
Medicine & Dentistry (Other)	393	86	479	412	91	503
Nursing	127	152	279	106	199	305
<b>SUBTOTAL</b>	7,085	710	7,795	6,997	782	7,779
Non-matriculated	36	509	545	56	514	570
<b>TOTAL UNIVERSITY</b>	7,121	1,219	8,340	7,053	1,296	8,349

ALL SIMON SPRING	Simon Spring Qtr 2004			Simon Spring Qtr 2005		
	FT	PT	Total	FT	PT	Total
Simon School - Spring Quarter	655	151	806	506	143	649
Non-matriculated - Simon Spring Quarter	-	110	110	-	106	106
<b>TOTAL UNIVERSITY</b>	655	261	916	506	249	755

Note: Totals include students in Take 5 Program.

**UNIVERSITY OF ROCHESTER**  
**Enrolled Students: Declared Ethnic Origin\***

FALL 2005	TOTAL		Nonresident alien		Black, non-Hispanic		American Indian/Alaska Native		Asian/Pacific Islander		Hispanic		White, non-Hispanic		Unknown	
	M	W	M	W	M	W	M	W	M	W	M	W	M	W	M	W
	<b>Undergraduates-Full Time</b>															
First-time Freshmen - College	483	509	21	14	20	34	-	1	51	54	25	29	316	324	50	53
First-time Freshmen - Eastman School	61	54	7	11	-	1	1	-	2	2	1	1	42	30	8	9
All other Freshmen	12	10	-	1	1	1	-	-	1	1	1	2	6	3	3	2
Sophomores	622	519	25	15	29	21	-	2	52	54	25	19	420	340	71	68
Juniors	568	481	30	19	24	26	1	3	66	61	17	27	344	292	86	53
Seniors	547	551	19	16	19	27	1	1	65	57	20	22	345	362	78	66
Kauffman Students	2	1	-	-	-	-	-	-	-	-	-	-	2	1	-	-
Unclassified	6	9	3	5	-	-	-	-	-	-	-	-	1	2	2	2
<b>SUBTOTAL</b>	<b>2,301</b>	<b>2,134</b>	<b>105</b>	<b>81</b>	<b>93</b>	<b>110</b>	<b>3</b>	<b>7</b>	<b>237</b>	<b>229</b>	<b>89</b>	<b>100</b>	<b>1,476</b>	<b>1,354</b>	<b>298</b>	<b>253</b>
<b>Undergraduates-Part Time</b>																
Juniors	13	78	-	2	2	6	-	1	1	2	1	3	5	58	4	6
Seniors	13	8	-	-	1	2	-	-	2	-	-	-	9	4	1	2
Unclassified	28	121	-	1	3	11	-	2	4	2	1	6	13	82	7	17
<b>SUBTOTAL</b>	<b>54</b>	<b>207</b>	<b>-</b>	<b>3</b>	<b>6</b>	<b>19</b>	<b>-</b>	<b>3</b>	<b>7</b>	<b>4</b>	<b>2</b>	<b>9</b>	<b>27</b>	<b>144</b>	<b>12</b>	<b>25</b>
<b>TOTAL Undergraduates</b>	<b>2,355</b>	<b>2,341</b>	<b>105</b>	<b>84</b>	<b>99</b>	<b>129</b>	<b>3</b>	<b>10</b>	<b>244</b>	<b>233</b>	<b>91</b>	<b>109</b>	<b>1,503</b>	<b>1,498</b>	<b>310</b>	<b>278</b>
<b>First Professional</b>																
First-time	45	55	-	-	1	4	-	-	11	13	-	-	31	38	2	-
All others	141	171	-	-	8	19	-	1	25	46	1	2	99	96	8	7
<b>TOTAL First Professional</b>	<b>186</b>	<b>226</b>	<b>-</b>	<b>-</b>	<b>9</b>	<b>23</b>	<b>-</b>	<b>1</b>	<b>36</b>	<b>59</b>	<b>1</b>	<b>2</b>	<b>130</b>	<b>134</b>	<b>10</b>	<b>7</b>
<b>Graduate Students-Full Time</b>																
First-time Masters/Doctoral	158	109	67	42	1	5	1	1	5	1	1	4	68	42	15	14
All others	1,136	907	471	346	23	29	-	2	41	51	22	30	487	395	92	54
Unclassified	4	4	3	2	-	2	-	-	-	-	-	-	-	-	1	-
<b>SUBTOTAL</b>	<b>1,298</b>	<b>1,020</b>	<b>541</b>	<b>390</b>	<b>24</b>	<b>36</b>	<b>1</b>	<b>3</b>	<b>46</b>	<b>52</b>	<b>23</b>	<b>34</b>	<b>555</b>	<b>437</b>	<b>108</b>	<b>68</b>
<b>Graduate Students-Part Time</b>																
First-time Masters/Doctoral	5	6	-	-	-	-	-	-	-	-	-	-	5	5	-	1
All others	269	442	11	10	13	17	-	2	10	19	4	11	209	358	22	25
Unclassified	182	258	15	6	4	18	-	1	12	14	5	11	118	179	28	29
<b>SUBTOTAL</b>	<b>456</b>	<b>706</b>	<b>26</b>	<b>16</b>	<b>17</b>	<b>35</b>	<b>-</b>	<b>3</b>	<b>22</b>	<b>33</b>	<b>9</b>	<b>22</b>	<b>332</b>	<b>542</b>	<b>50</b>	<b>55</b>
<b>TOTAL Graduates</b>	<b>1,754</b>	<b>1,726</b>	<b>567</b>	<b>406</b>	<b>41</b>	<b>71</b>	<b>1</b>	<b>6</b>	<b>68</b>	<b>85</b>	<b>32</b>	<b>56</b>	<b>887</b>	<b>979</b>	<b>158</b>	<b>123</b>
<b>Total University</b>	<b>4,295</b>	<b>4,293</b>	<b>672</b>	<b>490</b>	<b>149</b>	<b>223</b>	<b>4</b>	<b>17</b>	<b>348</b>	<b>377</b>	<b>124</b>	<b>167</b>	<b>2,520</b>	<b>2,611</b>	<b>478</b>	<b>408</b>

\* This report indicates the ethnic origin of students, as reported by the students. Definitions are below.

Numbers 1-5 apply to all except those who are Nonresident aliens

1. Asian/Pacific Islander: A person having origins in any of the original peoples of the Far East, Southeast Asia, the Indian Subcontinent, or Pacific Islands
2. Black, non-Hispanic: A person having origins in any of the black racial groups of Africa (except those of Hispanic origin)
3. White, non-Hispanic: A person having origins in any of the original peoples of Europe, North Africa, or the Middle East (except those of Hispanic origin)
4. Hispanic: A person of Mexican, Puerto Rican, Cuban, Central or South American, or other Spanish culture or origin, regardless of race
5. American Indian/Alaska Native: A person having origins in any of the original peoples of North America and who maintains cultural identification through tribal affiliation or community recognition
6. Nonresident alien: A person who is not a citizen or national of the United States and who is in this country on a visa or temporary basis and does not have the right to remain indefinitely
7. Race/Ethnicity Unknown: Used only if the student did not select a racial-ethnic designation and the institution finds it impossible to place the student in one of the aforementioned racial/ethnic categories

Source: IPEDS-EF1 Report. Totals may differ from internal University Student Information System reports.

**UNIVERSITY OF ROCHESTER**

**Geographic Distribution of Full-time Students**

**FALL 2005 (as of October 14, 2005)**

		ALL		Arts & Sciences		Engineering		Simon School	Warner School	Eastman		SMD	Nursing		Eastman Dental*
		UGs	Grads	UGs	Grads	UGs	Grads	Grads	Grads	UGs	Grads	Grads	UGs	Grads	Grads
Middle Atlantic Region	District of Columbia	14	4	14	-	1	-	1	-	-	-	2	-	-	-
	Delaware	8	4	6	3	1	-	-	1	1	-	-	-	-	-
	Maryland	108	28	96	7	1	3	5	2	11	2	9	-	-	-
	New Jersey	222	35	195	8	6	11	8	-	21	4	4	-	-	-
	New York	2,023	662	1,792	119	96	57	124	96	93	39	175	42	31	21
	<b>NY % of Total</b>	<b>46%</b>	<b>28%</b>												
	Pennsylvania	238	84	197	33	15	6	7	1	26	18	17	-	1	1
	West Virginia	2	1	-	1	2	-	-	-	-	-	-	-	-	-
New England Region	Connecticut	138	20	112	6	9	2	4	-	17	5	2	-	1	-
	Massachusetts	254	33	227	11	10	6	4	-	14	8	4	3	-	-
	Maine	23	11	18	2	1	1	1	-	3	1	6	1	-	-
	New Hampshire	33	9	29	3	2	2	1	-	2	2	1	-	-	-
	Rhode Island	19	3	18	1	1	-	-	-	-	-	2	-	-	-
	Vermont	31	8	26	3	2	2	-	-	2	-	3	1	-	-
Great Lakes Region	Illinois	99	24	65	10	5	1	1	-	28	7	5	1	-	-
	Indiana	17	6	13	3	1	1	-	1	3	1	-	-	-	-
	Michigan	32	24	18	7	1	3	1	1	12	10	2	1	-	-
	Ohio	134	38	101	15	6	4	2	1	24	8	8	3	-	-
	Wisconsin	30	12	13	6	-	1	-	-	17	3	2	-	-	-
South-eastern Region	Alabama	4	4	3	2	-	-	2	-	1	-	-	-	-	-
	Arkansas	1	4	1	1	-	-	-	-	-	2	1	-	-	-
	Florida	45	18	37	4	-	1	-	1	7	8	4	1	-	-
	Georgia	22	18	9	4	-	1	2	2	13	8	-	-	1	-
	Kentucky	6	4	3	1	-	1	-	1	3	1	-	-	-	-
	Louisiana	6	5	6	2	-	1	-	-	-	2	-	-	-	-
	Mississippi	-	-	-	-	-	-	-	-	-	-	-	-	-	-
	North Carolina	24	14	15	3	1	-	1	-	8	8	2	-	-	-
	South Carolina	13	6	4	3	-	-	1	-	9	-	1	-	-	1
	Tennessee	16	4	11	3	-	-	-	-	5	-	1	-	-	-
	Virginia	61	22	44	10	2	1	4	-	15	6	1	-	-	-
Central Region	Iowa	7	5	3	1	1	-	-	-	3	4	-	-	-	-
	Kansas	8	3	7	1	-	-	-	-	1	1	1	-	-	-
	Minnesota	17	10	12	4	1	-	-	-	4	6	-	-	-	-
	Missouri	22	12	15	5	-	3	1	-	6	1	2	1	-	-
	North Dakota	5	2	2	1	1	-	-	-	2	1	-	-	-	-
	Nebraska	3	3	1	-	1	-	-	-	1	2	1	-	-	-
	South Dakota	3	-	3	-	-	-	-	-	-	-	-	-	-	-
South-western Region	Arizona	14	8	11	2	-	-	-	-	3	3	3	-	-	-
	New Mexico	6	4	4	1	-	-	-	-	2	2	1	-	-	-
	Oklahoma	6	4	5	1	-	-	-	-	1	2	1	-	-	-
	Texas	78	30	56	11	3	1	4	1	19	11	2	-	-	-
Mountain Region	Colorado	25	19	17	6	1	4	-	-	7	6	3	-	-	-
	Idaho	3	3	1	1	-	1	-	-	2	1	-	-	-	-
	Montana	4	1	1	1	-	-	-	-	2	-	-	1	-	-
	Nevada	5	1	4	-	-	-	1	-	1	-	-	-	-	-
	Utah	3	14	2	3	-	1	2	1	1	1	6	-	-	-
	Wyoming	-	-	-	-	-	-	-	-	-	-	-	-	-	-
Pacific Region	Alaska	3	4	2	1	-	1	-	-	1	2	-	-	-	-
	California	113	60	81	21	3	2	12	-	24	15	9	5	-	1
	Hawaii	9	2	8	-	-	-	-	-	-	1	1	1	-	-
	Oregon	21	15	16	8	-	1	2	1	5	3	-	-	-	-
	Washington	35	16	26	6	1	2	1	-	8	3	4	-	-	-
Other	Guam	1	-	1	-	-	-	-	-	-	-	-	-	-	-
	Puerto Rico	4	8	4	1	-	-	-	-	-	-	6	-	-	1
	Virgin Islands	2	-	2	-	-	-	-	-	-	-	-	-	-	-
	AE	2	-	2	-	-	-	-	-	-	-	-	-	-	-
	Foreign	383	1,031	291	307	20	169	175	19	69	145	180	3	3	33
	Unknown	-	31	-	3	-	2	-	-	-	-	-	-	-	26
	Military Base	15	5	13	-	1	2	-	-	1	1	1	-	-	1
<b>TOTAL</b>		<b>4,420</b>	<b>2,396</b>	<b>3,663</b>	<b>656</b>	<b>195</b>	<b>295</b>	<b>367</b>	<b>129</b>	<b>498</b>	<b>354</b>	<b>473</b>	<b>64</b>	<b>37</b>	<b>85</b>

\*Eastman Dental Center are non-matriculated. Other non-matriculated students are not reported on this table.

Source: UR-13 Reports

**UNIVERSITY OF ROCHESTER**  
**UNDERGRADUATE ENROLLMENT BY MAJOR - OFFICIAL & UNOFFICIAL**  
**By School, All Students, Fall Semester**

	2003-04		2004-05		2005-06	
	Unofficial	Official	Unofficial	Official	Unofficial	Official
<b>THE COLLEGE</b>						
<b>Arts &amp; Sciences</b>						
African & African-American Studies	-	3	-	5	1	8
American Sign Language	6	18	5	15	6	15
Anthropology	17	21	12	27	18	28
Art & Art History	16	24	11	19	13	15
Art History	9	9	7	4	7	5
Studio Arts	7	15	4	15	6	10
Biological Sciences	213	165	199	175	145	210
Biochemistry	79	25	77	37	59	52
Cell & Development	23	22	21	24	12	38
Ecology & Evol Biol	11	20	7	22	3	24
Microbiology	12	23	17	10	14	17
Molecular Genetics	48	34	37	37	23	32
Neuroscience	40	41	40	45	34	47
Biology	337	88	353	93	329	96
Brain & Cognitive Sciences	22	42	28	56	24	58
Chemistry	47	38	43	46	47	37
Clinical & Social Psychology	155	246	133	214	116	204
Cognitive Science	4	-	2	-	2	-
Computer Science	112	85	73	69	55	53
Earth & Environmental Sciences	23	18	27	19	21	18
Biology-Geology	2	1	1	1	2	1
Environmental Sciences	12	6	8	-	4	5
Environmental Studies	6	-	15	8	14	4
Geological Sciences	3	11	3	10	1	8
Economics	120	209	125	218	130	188
English	87	126	75	138	82	127
Film and Media Studies	15	25	20	28	25	25
Health & Society	19	57	20	53	20	45
History	65	80	72	96	72	83
Integrated Sciences	1	-	-	-	-	-
Interdepartmental	4	13	5	10	3	18
Linguistics	9	14	8	19	5	14
Mathematics	70	91	64	90	59	101
Applied Mathematics	11	19	8	13	3	16
Computer Science:Mathematics	-	-	4	-	2	-
Mathematics	56	70	49	75	49	83
Mathematics-Statistics	3	2	3	2	5	2
Modern Languages & Cultures	24	81	36	91	27	85
Comparative Literature	1	2	1	5	-	4
French	10	12	14	10	11	15
German	1	8	3	12	4	13
Japanese	3	14	2	17	1	19
Russian	1	8	-	11	1	7
Spanish	8	37	16	36	10	27
Music	15	14	21	14	25	25
Philosophy	11	32	7	36	4	30
Physics and Astronomy	83	38	69	55	64	64
Physics	57	30	42	45	38	51
Physics and Astronomy	26	8	27	10	26	13
Political Science	115	188	111	168	102	172
Religion & Classics	9	52	12	44	12	58
Classics	3	2	6	3	5	7
Religious Studies	6	50	6	41	7	51
Russian Studies	1	5	-	2	2	2
Sociology	-	-	3	-	2	-
Statistics	1	14	2	17	2	16
Women's Studies	1	3	1	2	1	4
Miscellaneous (Uncertain of Major)	341	-	346	-	513	-
3-2 Simon	9	-	8	-	3	-
Unknown	332	-	338	-	510	-
<b>SUBTOTAL</b>	<b>1,943</b>	<b>1,790</b>	<b>1,883</b>	<b>1,819</b>	<b>1,927</b>	<b>1,799</b>

**UNIVERSITY OF ROCHESTER**  
**UNDERGRADUATE ENROLLMENT BY MAJOR - OFFICIAL & UNOFFICIAL**  
**By School, All Students, Fall Semester**

	2003-04		2004-05		2005-06	
	Unofficial	Official	Unofficial	Official	Unofficial	Official
<b>THE COLLEGE</b>						
<b>School of Engineering and Applied Sciences</b>						
Biomedical Engineering	96	68	100	64	118	70
Chemical Engineering	35	32	29	25	47	26
Electrical & Computer Engineering	75	50	56	43	46	27
Engineering Science	14	3	14	1	26	1
Geomechanics	2	3	-	4	-	3
Interdepartmental Engineering	2	2	5	-	1	-
Mechanical Engineering	77	43	86	49	99	44
Optics	44	40	39	38	35	32
<b>SUBTOTAL</b>	<b>345</b>	<b>241</b>	<b>329</b>	<b>224</b>	<b>372</b>	<b>203</b>
<b>THE COLLEGE SUBTOTAL</b>	<b>2,288</b>	<b>2,031</b>	<b>2,212</b>	<b>2,043</b>	<b>2,299</b>	<b>2,002</b>
<b>Eastman School of Music</b>						
Applied Music	-	416	1	413	1	428
Composition	-	15	-	13	-	13
Jazz & Contemp Media	-	34	-	38	-	41
Jazz & Contemp Media - Performance	-	2	-	-	-	-
Jazz & Contemp Media - Writing	1	-	-	1	-	2
Music Education - General	-	13	-	11	-	9
Music Education - Instrumental	-	60	-	45	-	54
Music Education - Vocal	-	19	-	14	-	16
Music Theory	-	10	-	9	-	12
Musical Arts	-	5	-	4	-	2
<b>SUBTOTAL</b>	<b>1</b>	<b>574</b>	<b>1</b>	<b>548</b>	<b>1</b>	<b>577</b>
<b>School of Nursing</b>	<b>-</b>	<b>129</b>	<b>-</b>	<b>133</b>	<b>-</b>	<b>153</b>
<b>TOTAL UNIVERSITY</b>	<b>2,289</b>	<b>2,734</b>	<b>2,213</b>	<b>2,724</b>	<b>2,300</b>	<b>2,732</b>

Source: Registrar's reports 10/10/03 (fall '03), 10/8/04 (fall '04), and 10/14/05 (fall '05)

Includes full-, part-, and x-time students.

Notes: Official majors have been declared by the student and approved by the school.

Students with double majors and/or double degrees are counted in each major and/or degree.

X-time indicates students are not registered for course work in the semester. These students are normally enrolled in a 'place-holder' course, which makes them eligible to register for courses at Rochester in a subsequent semester.

**UNIVERSITY OF ROCHESTER**

**Graduate Majors**

**By School, All Students, Fall Semester** (Those with double majors and/or double degrees are counted in each major and/or degree)

	2003-04			2003-04		2004-05			2004-05		2005-06			2005-06	
	Full	Part	X	Masters	Doctoral	Full	Part	X	Masters	Doctoral	Full	Part	X	Masters	Doctoral
<b>THE COLLEGE</b>															
<b>Arts &amp; Sciences</b>															
Biology	37	-	1	1	37	33	1	1	1	34	40	-	1	1	40
Brain & Cognitive Science	21	1	-	1	21	30	-	-	-	30	31	-	-	-	31
Chemistry	66	4	2	1	71	80	2	3	3	82	75	1	6	1	81
Clinical, Social & Developmental Psychology	49	-	1	-	50	44	1	4	1	48	49	1	2	1	51
Computer Science	46	3	1	-	50	45	3	1	-	49	43	-	-	1	42
Earth & Environmental Sciences (Geology)	12	1	-	-	13	10	1	1	2	10	11	-	1	1	11
Economics	73	2	2	-	77	73	-	8	-	81	74	-	3	-	77
English	58	7	5	19	51	60	2	4	21	45	69	2	2	23	50
History	38	3	4	10	35	31	4	2	9	28	36	3	2	6	35
Linguistics	1	-	-	-	1	2	-	-	1	1	3	-	-	2	1
Mathematics (Math/Statistics)	28	-	1	3	26	26	-	-	4	22	28	-	-	1	27
Modern Languages & Cultures, Comp Lit	2	-	-	2	-	3	-	-	3	-	2	-	-	2	-
Philosophy	25	1	-	-	26	24	-	1	-	25	24	-	3	-	27
Physics and Astronomy (Physics)	129	2	3	4	130	117	1	2	1	119	106	-	5	1	110
Political Science	32	-	6	-	38	31	-	5	-	36	32	-	1	-	33
Visual & Cultural Studies	36	1	2	1	38	31	-	3	1	33	37	1	3	1	40
<b>SUBTOTAL</b>	<b>653</b>	<b>25</b>	<b>28</b>	<b>42</b>	<b>664</b>	<b>640</b>	<b>15</b>	<b>35</b>	<b>47</b>	<b>643</b>	<b>660</b>	<b>8</b>	<b>29</b>	<b>41</b>	<b>656</b>

<b>School of Engineering and Applied Sciences</b>															
Biomedical Engineering	30	-	-	4	26	37	2	-	7	32	44	1	-	9	36
Chemical Engineering	45	5	1	22	29	47	3	-	17	33	41	3	-	8	36
Electrical Engineering	82	4	3	19	70	82	10	1	23	70	81	8	2	21	70
Electrical and Computer Engineering	-	-	-	-	-	3	-	-	3	-	4	-	-	4	-
Materials Science	16	3	-	2	17	15	3	-	2	16	20	4	-	2	22
Mechanical Engineering	25	6	-	9	22	23	6	-	6	23	21	7	-	8	20
Optics	88	6	5	25	74	73	6	3	13	69	88	4	4	20	76
<b>SUBTOTAL</b>	<b>286</b>	<b>24</b>	<b>9</b>	<b>81</b>	<b>238</b>	<b>280</b>	<b>30</b>	<b>4</b>	<b>71</b>	<b>243</b>	<b>299</b>	<b>27</b>	<b>6</b>	<b>72</b>	<b>260</b>

<b>THE COLLEGE SUBTOTAL</b>	<b>939</b>	<b>49</b>	<b>37</b>	<b>123</b>	<b>902</b>	<b>920</b>	<b>45</b>	<b>39</b>	<b>118</b>	<b>886</b>	<b>959</b>	<b>35</b>	<b>35</b>	<b>113</b>	<b>916</b>
-----------------------------	------------	-----------	-----------	------------	------------	------------	-----------	-----------	------------	------------	------------	-----------	-----------	------------	------------

	2003-04			2003-04		2004-05			2004-05		2005-06			2005-06	
	Full	Part	X	Masters	Doctoral	Full	Part	X	Masters	Doctoral	Full	Part	X	Masters	Doctoral
<b>Simon Graduate School of Business Administration</b>															
Business Administration	503	164	7	610	64	413	123	4	485	55	337	160	4	450	51
Business Admin. - Executive Development	58	-	-	58	-	54	-	-	54	-	79	-	-	79	-
Business Admin. - Bern, Switzerland	55	-	-	55	-	32	-	-	32	-	35	-	-	35	-
Business Admin. - Nijenrode, Netherlands	22	-	-	22	-	4	-	-	4	-	-	-	-	-	-
<b>SUBTOTAL</b>	<b>638</b>	<b>164</b>	<b>7</b>	<b>745</b>	<b>64</b>	<b>503</b>	<b>123</b>	<b>4</b>	<b>575</b>	<b>55</b>	<b>451</b>	<b>160</b>	<b>4</b>	<b>564</b>	<b>51</b>

\*X-time indicates students are not registered for course work in the semester. These students are normally enrolled in a 'place-holder' course, which makes them eligible to register for courses at Rochester in a subsequent semester.

**UNIVERSITY OF ROCHESTER**

**Graduate Majors**

**By School, All Students, Fall Semester** (Those with double majors and/or double degrees are counted in each major and/or degree)

**Warner Graduate School of Education and Human Development**

	2003-04			2003-04		2004-05			2004-05		2005-06			2005-06	
	Full	Part	X	Masters		Full	Part	X	Masters		Full	Part	X	Masters	
<b>Master's Programs</b>															
Counseling (MS)	31	37	5	73		37	33	1	71		28	28	2	58	
Higher Education (MS)	3	13	-	16		1	19	1	21		2	22	1	25	
Human Develop (MS)	2	2	-	4		1	5	-	6		4	9	-	13	
School Administration (MS)	1	18	3	22		-	16	1	17		-	34	1	35	
Teaching and Curriculum (MS)	3	9	8	20		-	7	1	8		-	-	1	1	
Subject Area (MAT)	3	-	-	3		3	1	-	4		9	-	-	9	
Education (MS)	24	32	1	57		28	40	5	73		34	61	2	97	
<b>MASTER'S SUBTOTAL</b>	<b>67</b>	<b>111</b>	<b>17</b>	<b>195</b>		<b>70</b>	<b>121</b>	<b>9</b>	<b>200</b>		<b>77</b>	<b>154</b>	<b>7</b>	<b>238</b>	

	2003-04			2003-04		2004-05			2004-05		2005-06			2005-06	
	Full	Part	X	Doctoral		Full	Part	X	Doctoral		Full	Part	X	Doctoral	
<b>Doctoral Programs</b>															
Education (PhD)	28	27	18	73		30	30	11	71		37	35	12	84	
Education (EdD)	13	69	31	113		16	66	26	108		15	89	25	129	
<b>DOCTORAL SUBTOTAL</b>	<b>41</b>	<b>96</b>	<b>49</b>	<b>186</b>		<b>46</b>	<b>96</b>	<b>37</b>	<b>179</b>		<b>52</b>	<b>124</b>	<b>37</b>	<b>213</b>	

	2003-04			2003-04		2004-05			2004-05		2005-06			2005-06	
	Full	Part	X	Masters	Doctoral	Full	Part	X	Masters	Doctoral	Full	Part	X	Masters	Doctoral
<b>SUBTOTAL</b>	<b>108</b>	<b>207</b>	<b>66</b>	<b>195</b>	<b>186</b>	<b>116</b>	<b>217</b>	<b>46</b>	<b>200</b>	<b>179</b>	<b>129</b>	<b>278</b>	<b>44</b>	<b>238</b>	<b>213</b>

\*X-time indicates students are not registered for course work in the semester. These students are normally enrolled in a 'place-holder' course, which makes them eligible to register for courses at Rochester in a subsequent semester.

	2003-04			2003-04		2004-05			2004-05		2005-06			2005-06	
	Full	Part	X	Masters	Doctoral	Full	Part	X	Masters	Doctoral	Full	Part	X	Masters	Doctoral
<b>Eastman School of Music</b>															
Accompanying	14	-	1	4	11	13	-	1	3	11	12	-	-	2	10
Composition	16	-	-	8	8	15	-	1	6	10	21	-	-	11	10
Conducting (Choral/Orchestral/Wind Ensemble)	10	-	2	7	5	6	-	-	2	4	11	-	1	7	5
Early Music History	-	-	-	-	-	-	-	-	-	-	4	-	-	3	1
Jazz Studies&Contemp Media	11	1	-	9	3	14	1	1	8	8	13	2	1	8	8
Jazz Studies&Contemp Media-Writing	5	-	-	5	-	-	-	-	-	-	-	-	-	-	-
Music Education - Graduate & Summers Only	17	13	2	21	11	19	11	5	23	12	18	22	12	40	12
Music Theory	30	-	6	4	32	29	-	3	2	30	26	4	1	-	31
Musicology	18	-	6	1	23	14	1	6	1	20	16	4	2	-	22
Opera & Opera Stage Directing	-	-	-	-	-	2	-	-	2	-	3	-	-	3	-
Performance & Literature	254	18	19	162	129	250	20	25	161	134	244	21	15	145	135
Theory Pedagogy	8	2	1	7	4	5	1	-	5	1	10	1	-	10	1
<b>SUBTOTAL</b>	<b>383</b>	<b>34</b>	<b>37</b>	<b>228</b>	<b>226</b>	<b>367</b>	<b>34</b>	<b>42</b>	<b>213</b>	<b>230</b>	<b>378</b>	<b>54</b>	<b>32</b>	<b>229</b>	<b>235</b>

**UNIVERSITY OF ROCHESTER**

**Graduate Majors**

**By School, All Students, Fall Semester** (Those with double majors and/or double degrees are counted in each major and/or degree)

	2003-04			2003-04		2004-05			2004-05		2005-06			2005-06	
	Full	Part	X	Masters	Doctoral	Full	Part	X	Masters	Doctoral	Full	Part	X	Masters	Doctoral
<b>School of Medicine &amp; Dentistry</b>															
<i>Notes: Figures do not include M.D. student enrollments. First-year Ph.D. student clusters are reported in the program name.</i>															
Anatomy & Neurobiology/Anatomy	3	-	1	-	4	3	-	-	-	3	8	-	-	2	6
Biochem Molecular Bio & Genetics	12	-	-	-	12	18	-	-	-	18	30	-	-	-	30
Biochemistry	42	-	-	-	42	42	-	-	-	42	39	-	-	-	39
Biophysics	22	-	1	-	23	22	-	-	-	22	18	-	-	-	18
Cellular & Molecular Basis of Disease	13	-	-	-	13	16	-	-	-	16	19	-	-	-	19
Dental Science	1	-	1	2	-	2	1	-	3	-	2	-	-	2	-
Epidemiology	5	1	-	1	5	7	-	-	1	6	12	-	-	1	11
Genetics	17	-	-	-	17	14	-	-	-	14	17	-	-	-	17
Genetics Genomics & Dev	5	-	-	-	5	12	-	-	-	12	15	-	-	-	15
Health Services Research & Policy	15	2	2	-	19	14	1	2	-	17	15	-	1	-	16
Immunology Microbiol & Vacc Biol	23	-	-	-	23	27	-	-	-	27	26	-	-	1	25
Microbiology & Immunology	61	5	2	8	60	58	12	1	10	55	66	9	2	19	58
Molecular Biophy & Structural Biochem	7	-	-	-	7	7	-	-	-	7	9	-	-	-	9
Marriage & Family Therapy	15	14	1	30	-	20	12	-	32	-	21	10	-	31	-
Neuroscience	39	-	-	-	39	45	-	-	-	45	41	-	-	-	41
Pathology	36	1	-	1	36	30	1	-	1	30	28	1	1	1	29
Pathways of Human Disease	8	-	-	-	8	5	-	-	-	5	12	-	-	-	12
Pharmacology	26	2	1	2	27	29	1	-	1	29	29	2	-	2	29
Public Health	6	21	15	42	-	6	23	9	38	6	12	22	7	41	-
Public Health Clinical Investigation	7	32	16	53	2	13	36	19	65	3	12	36	19	62	5
Statistics & Medical Statistics	9	-	-	-	9	12	-	-	-	12	14	2	-	4	12
Toxicology	37	-	1	-	38	34	-	1	-	35	33	-	-	-	33
<b>SUBTOTAL</b>	<b>409</b>	<b>78</b>	<b>41</b>	<b>139</b>	<b>389</b>	<b>436</b>	<b>87</b>	<b>32</b>	<b>151</b>	<b>404</b>	<b>478</b>	<b>82</b>	<b>30</b>	<b>166</b>	<b>424</b>

	2003-04			2003-04		2004-05			2004-05		2005-06			2005-06	
	Full	Part	X	Masters	Doctoral	Full	Part	X	Masters	Doctoral	Full	Part	X	Masters	Doctoral
<b>School of Nursing</b>															
Acute Critical Care	1	5	1	7	-	1	4	-	5	-	2	7	-	9	-
Acute Care Cardiovascular	-	5	1	6	-	-	3	1	4	-	-	1	-	1	-
Acute Care Cardiopulmonary	-	-	-	-	-	-	1	-	1	-	-	1	-	1	-
Adult Nurse Practitioner	2	20	3	25	-	1	26	4	31	-	2	22	3	27	-
Care of Children & Families	4	17	2	23	-	5	13	3	20	1	2	17	3	21	1
Family Health Nurse Practitioner	9	20	4	33	-	6	28	2	36	-	6	27	2	35	-
Gerontological Nurse Practitioner	1	1	-	1	1	-	3	-	3	-	-	2	1	3	-
Leadership in Health Care Systems	-	-	-	-	-	-	22	1	23	-	-	17	1	18	-
Neonatal Nurse Practitioner	1	1	-	2	-	-	-	-	-	-	-	9	-	9	-
Nursing	18	6	11	1	34	22	8	6	1	35	22	12	4	-	38
Pediatric Nurses Prac/Psych Mental Health	2	-	2	4	-	4	2	2	8	-	3	1	-	4	-
Psych Mental Health	3	11	2	16	-	2	6	2	10	-	1	11	-	12	-
<b>SUBTOTAL</b>	<b>41</b>	<b>86</b>	<b>26</b>	<b>118</b>	<b>35</b>	<b>41</b>	<b>116</b>	<b>21</b>	<b>142</b>	<b>36</b>	<b>38</b>	<b>127</b>	<b>14</b>	<b>140</b>	<b>39</b>

	2003-04			2003-04		2004-05			2004-05		2005-06			2005-06	
	Full	Part	X	Masters	Doctoral	Full	Part	X	Masters	Doctoral	Full	Part	X	Masters	Doctoral
<b>UNIVERSITY TOTALS</b>	<b>2,518</b>	<b>618</b>	<b>214</b>	<b>1,548</b>	<b>1,802</b>	<b>2,383</b>	<b>622</b>	<b>184</b>	<b>1,399</b>	<b>1,790</b>	<b>2,433</b>	<b>736</b>	<b>159</b>	<b>1,450</b>	<b>1,878</b>

\*X-time indicates students are not registered for course work in the semester. These students are normally enrolled in a 'place-holder' course, which makes them eligible to register for courses at Rochester in a subsequent semester.  
Source: Registrar's reports 10/10/03 (fall '03), 10/8/04 (fall '04), and UR-12NEW 10/14/05 (fall '05) (Simon School adjusted as of 11/1/05)



**UNIVERSITY OF ROCHESTER**

**Course Credit Hours & Enrollments by School and Subject Area**

**Reported for Undergraduate & Graduate Students**

Arts & Sciences	NUMBER OF CREDIT HOURS						NO. OF COURSE ENROLLMENTS					
	Fall 2003		Fall 2004		Fall 2005		Fall 2003		Fall 2004		Fall 2005	
	UG	Grad	UG	Grad	UG	Grad	UG	Grad	UG	Grad	UG	Grad
African-American Studies	16	-	24	-	16	-	4	-	6	1	4	1
American Sign Language	900	8	818	8	850	12	225	2	205	2	213	3
American Sign Language	868	8	818	8	850	12	217	2	205	2	213	3
Japanese Sign Language	32	-	-	-	-	-	8	-	-	-	-	-
Anthropology	1,136	4	1,084	9	900	23	284	1	275	3	226	6
Art & Art History	1,207	145	996	193	1,162	184	299	50	246	58	291	58
Art & Art History - Art History	601	141	468	193	552	184	147	49	114	58	138	58
Art & Art History - Studio Arts	606	4	528	-	610	-	152	1	132	-	153	-
Biology	4,192	328	3,911	278	5,182	336	1,233	95	1,162	71	1,519	103
Brain & Cognitive Science	2,633	230	2,860	281	2,965	235	709	53	767	78	800	68
Brain & Cognitive Science	2,256	223	2,426	273	2,518	218	571	50	613	74	644	62
Neuroscience	377	7	434	8	447	17	138	3	154	4	156	6
Chemistry	4,110	631	3,998	738	4,634	558	1,098	148	1,112	193	1,242	185
Clinical & Social Psychology	4,702	364	4,262	388	4,504	393	1,260	119	1,153	130	1,207	117
Clinical & Soc Sciences in Psy	3,607	364	3,325	388	3,545	393	985	119	902	130	951	117
Psychology	1,095	-	937	-	959	-	275	-	251	-	256	-
Computer Science	2,034	390	1,796	449	1,809	421	513	107	463	116	467	100
Dance	350	2	342	-	314	6	165	1	168	-	149	2
Earth & Environmental Sciences	512	101	456	93	496	93	126	26	114	27	124	29
Economics	4,227	763	3,918	808	3,806	717	1,057	219	979	243	956	217
English	3,528	546	3,808	589	3,720	652	895	145	968	155	940	184
Film and Media Studies	74	-	68	-	40	-	19	-	17	-	10	-
Health & Society	202	-	634	-	183	-	51	-	160	-	46	-
History	2,395	305	2,812	213	2,671	346	598	102	703	68	668	97
Linguistics	772	-	732	13	836	54	193	-	183	3	209	14
Mathematics	5,578	331	5,604	292	5,972	330	1,379	89	1,385	73	1,482	84
Modern Languages & Cultures	4,530	46	4,418	49	4,184	72	1,127	12	1,086	14	1,030	18
Chinese	236	6	232	-	280	6	42	1	45	-	56	1
Comparative Literature	204	4	194	6	208	4	52	2	50	3	54	2
French	604	24	606	-	532	20	159	6	158	-	138	5
German	762	12	508	24	476	20	191	3	127	6	119	5
Italian	478	-	468	4	584	-	126	-	121	1	154	-
Japanese	532	-	708	-	648	10	111	-	159	-	145	2
Polish	20	-	12	-	12	-	5	-	3	-	3	-
Russian	482	-	474	-	296	-	124	-	119	-	74	-
Spanish	1,212	-	1,216	15	1,148	12	317	-	304	4	287	3
Music	1,427	6	1,377	4	1,726	-	533	2	536	1	638	-
Naval Science	136	-	184	-	176	-	34	-	46	-	44	-
Philosophy	2,048	155	2,116	133	1,964	118	512	52	529	44	491	46
Physics & Astronomy	2,626	772	2,840	799	3,087	777	667	200	723	188	784	173
Astronomy	400	44	556	80	520	80	100	10	139	20	130	16
Physics	2,226	728	2,284	719	2,567	697	567	190	584	168	654	157
Political Science	3,364	314	3,560	298	3,240	295	828	90	878	87	805	80
Religion & Classics	2,452	23	2,444	16	2,531	15	594	6	601	4	623	4
Classical Greek	44	-	40	4	85	-	11	-	10	1	18	-
Classical Studies	156	-	328	-	288	-	39	-	82	-	72	-
Judaic Studies	2	-	34	-	18	-	1	-	16	-	8	-
Religion & Classics - Arabic	320	4	240	4	256	-	80	1	60	1	64	-
Religion & Classics - Hebrew	88	4	128	-	156	-	22	1	32	-	39	-
Religion & Classics - Latin	170	-	220	-	190	4	44	-	56	-	50	1
Religion & Classics - Yiddish	-	-	-	4	8	-	-	-	-	1	2	-
Religion & Classics - Sanskrit	56	4	8	-	40	-	14	1	2	-	10	-
Religion & Classics	1,616	11	1,446	4	1,490	11	383	3	343	1	360	3
Russian Studies	181	-	60	-	126	-	46	-	17	-	39	-
Sociology	320	-	416	-	455	-	80	-	104	-	114	-
Statistics	832	45	808	60	688	33	208	13	202	16	172	10
The College: Arts & Sciences	2,379	-	2,460	2	2,165	3	620	-	644	1	611	2
Wallis Institute of Political Economics	-	28	-	30	-	25	-	7	-	7	-	6
Women's Studies	58	-	54	-	164	-	22	-	20	-	47	-
<b>SUBTOTAL</b>	<b>58,920</b>	<b>5,537</b>	<b>58,859</b>	<b>5,743</b>	<b>60,565</b>	<b>5,698</b>	<b>15,379</b>	<b>1,539</b>	<b>15,452</b>	<b>1,583</b>	<b>15,951</b>	<b>1,607</b>
Study Abroad	880	-	792	-	1,072	-	68	-	63	-	73	-
<b>TOTAL</b>	<b>59,800</b>	<b>5,537</b>	<b>59,651</b>	<b>5,743</b>	<b>61,637</b>	<b>5,698</b>	<b>15,447</b>	<b>1,539</b>	<b>15,515</b>	<b>1,583</b>	<b>16,024</b>	<b>1,607</b>

School of Engineering & Applied Sciences	NUMBER OF CREDIT HOURS						NO. OF COURSE ENROLLMENTS					
	Fall 2003		Fall 2004		Fall 2005		Fall 2003		Fall 2004		Fall 2005	
	UG	Grad	UG	Grad	UG	Grad	UG	Grad	UG	Grad	UG	Grad
Biomedical Engineering	873	182	847	189	937	275	270	53	257	54	287	69
Chemical Engineering	536	446	469	411	591	337	139	96	121	97	151	88
Electrical and Computer Engineering	971	674	844	746	653	700	260	172	225	181	188	182
Engineering and Applied Science	-	-	-	-	36	-	-	-	-	-	9	-
Materials Science	-	32	-	80	-	86	-	13	-	17	-	18
Mechanical Engineering	1,298	373	1,466	245	1,470	257	336	105	376	60	385	75
Optics	730	866	679	665	476	756	183	250	171	178	119	229
<b>TOTAL</b>	<b>4,408</b>	<b>2,573</b>	<b>4,305</b>	<b>2,336</b>	<b>4,163</b>	<b>2,411</b>	<b>1,188</b>	<b>689</b>	<b>1,150</b>	<b>587</b>	<b>1,139</b>	<b>661</b>

**UNIVERSITY OF ROCHESTER**

**Course Credit Hours & Enrollments by School and Subject Area  
Reported for Undergraduate & Graduate Students**

Simon Graduate School of Business Administration	NUMBER OF CREDIT HOURS						NO. OF COURSE ENROLLMENTS					
	Fall 2003		Fall 2004		Fall 2005		Fall 2003		Fall 2004		Fall 2005	
	UG	Grad	UG	Grad	UG	Grad	UG	Grad	UG	Grad	UG	Grad
Accounting	344	1,383	352	968	384	677	90	596	98	390	100	271
Applied Economics	-	151	-	123	-	93	-	49	-	41	-	31
Applied Statistics	20	875	44	605	16	284	10	425	22	301	8	142
Business Environ & Public Policy	-	84	-	93	-	117	-	28	-	31	-	39
Business Law	196	-	188	-	176	4	49	-	47	-	44	1
Competitive & Organizational Strategy	20	1,103	40	766	16	791	10	477	20	322	8	351
Computer & Information Sys	40	390	64	328	32	302	10	180	17	154	8	146
Exec. Program - Bern, Switzerland	-	495	-	324	-	-	-	165	-	108	-	-
Exec. Program - Nijenrode, Netherlands	-	264	-	-	-	-	-	88	-	-	-	-
Executive Development	-	542	-	464	-	703	-	144	-	120	-	185
Finance	220	1,359	143	1,263	162	987	56	453	39	421	42	329
General Business Admin	52	372	76	139	72	198	13	116	19	75	18	72
Health Sciences	-	87	-	36	-	132	-	29	-	12	-	44
Management Communications	-	-	-	-	-	-	-	-	-	-	-	-
Management Science Models	-	48	-	24	-	15	-	16	-	8	-	5
Marketing	196	465	152	453	200	645	49	155	38	151	50	215
Operations Management	24	216	60	195	52	165	6	72	15	65	13	55
<b>TOTAL</b>	<b>1,112</b>	<b>7,834</b>	<b>1,119</b>	<b>5,781</b>	<b>1,110</b>	<b>5,113</b>	<b>293</b>	<b>2,993</b>	<b>315</b>	<b>2,199</b>	<b>291</b>	<b>1,886</b>

Eastman School of Music	NUMBER OF CREDIT HOURS						NO. OF COURSE ENROLLMENTS					
	Fall 2003		Fall 2004		Fall 2005		Fall 2003		Fall 2004		Fall 2005	
	UG	Grad	UG	Grad	UG	Grad	UG	Grad	UG	Grad	UG	Grad
Accompanying	43	76	53	50	65	47	34	22	43	16	51	19
Arts Leadership Curriculum	118	173	107	161	72	119	71	114	81	115	60	102
Composition	130	83	160	102	123	89	68	35	80	46	64	40
Conducting	112	49	78	73	108	104	56	22	39	32	54	51
Eastman Initiatives Curriculum	146	-	130	-	131	-	142	-	128	-	129	-
Eastman School of Music	-	83	-	-	-	-	-	100	-	89	-	83
Ensemble	857	109	908	85	922	91	530	87	548	73	552	72
Ethnomusicology	-	-	-	3	33	12	-	-	-	1	11	4
Guitar Class	-	-	12	2	12	4	-	-	6	1	6	2
Humanities	1,402	56	1,401	78	1,343	24	490	28	490	35	421	19
Jazz Studies & Contemp Media	287	97	248	75	227	56	195	61	171	46	162	34
Music Education	416	95	260	147	392	133	254	39	171	64	229	75
Music History	121	573	561	574	501	564	41	228	186	224	170	218
Musicology	3	123	-	150	15	155	1	33	-	40	4	40
Opera	87	62	74	49	107	42	35	36	30	28	48	26
Orchestration	-	14	2	4	-	20	-	7	1	2	-	10
Pedagogy	29	15	37	46	39	30	25	8	26	25	28	17
Performance	-	1	1	6	-	-	-	1	1	4	-	-
Sacred Music	-	9	-	-	4	13	-	5	-	-	2	8
Theory	1,474	515	1,441	563	1,420	619	718	196	709	218	592	225
<b>SUBTOTAL</b>	<b>5,225</b>	<b>2,131</b>	<b>5,472</b>	<b>2,167</b>	<b>5,513</b>	<b>2,121</b>	<b>2,660</b>	<b>1,022</b>	<b>2,710</b>	<b>1,059</b>	<b>2,583</b>	<b>1,045</b>
Applied Music	3,224	1,462	3,257	1,464	3,411	1,394	1,203	400	1,205	406	1,275	383
<b>SUBTOTAL</b>	<b>8,449</b>	<b>3,593</b>	<b>8,729</b>	<b>3,631</b>	<b>8,924</b>	<b>3,515</b>	<b>3,863</b>	<b>1,422</b>	<b>3,915</b>	<b>1,465</b>	<b>3,858</b>	<b>1,428</b>
Study Abroad	32	12	-	-	-	-	2	1	-	-	-	-
<b>TOTAL</b>	<b>8,481</b>	<b>3,605</b>	<b>8,729</b>	<b>3,631</b>	<b>8,924</b>	<b>3,515</b>	<b>3,865</b>	<b>1,423</b>	<b>3,915</b>	<b>1,465</b>	<b>3,858</b>	<b>1,428</b>

**UNIVERSITY OF ROCHESTER**

**Course Credit Hours & Enrollments by School and Subject Area**

**Reported for Undergraduate & Graduate Students**

School of Medicine & Dentistry Does not include M.D. students	NUMBER OF CREDIT HOURS						NO. OF COURSE ENROLLMENTS					
	Fall 2003		Fall 2004		Fall 2005		Fall 2003		Fall 2004		Fall 2005	
	UG	Grad	UG	Grad	UG	Grad	UG	Grad	UG	Grad	UG	Grad
Anatomy	-	41	-	32	-	112	-	4	-	4	-	17
Biochemistry	431	763	570	692	32	700	108	130	143	139	8	147
Biophysics	-	389	-	239	-	233	-	62	-	50	-	47
Biostatistics	28	444	24	390	52	460	11	118	12	116	23	135
General Dentistry	-	240	-	300	-	492	-	20	-	25	-	41
Genetics	-	289	-	352	-	383	-	49	-	72	-	86
Interdepartmental	99	707	177	764	158	825	23	161	41	174	35	304
Microbiology	204	1,266	151	1,017	267	937	54	346	39	295	68	286
Neuroscience	-	547	4	606	-	456	-	80	1	124	-	96
Oral Biology	-	26	-	47	-	46	-	21	-	35	-	37
Orthodontics	-	24	-	72	-	132	-	2	-	6	-	11
Pathology	-	666	4	370	-	347	-	127	1	74	-	84
Pedodontics	-	-	-	60	-	144	-	-	-	5	-	12
Periodontics	-	24	-	24	-	168	-	2	-	2	-	14
Pharmacology & Physiology	4	534	4	505	8	519	1	83	1	101	2	103
Preventive Medicine	34	681	11	763	14	797	9	221	3	231	4	243
Prosthodontics	-	24	-	36	-	84	-	2	-	3	-	7
Psychiatry	-	181	-	242	-	264	-	62	-	85	-	101
Temporomandibular Joint Disorder	-	60	-	-	-	84	-	5	-	-	-	7
Toxicology	-	480	-	300	-	352	-	60	-	58	-	61
<b>TOTAL</b>	<b>800</b>	<b>7,386</b>	<b>945</b>	<b>6,811</b>	<b>531</b>	<b>7,534</b>	<b>206</b>	<b>1,555</b>	<b>241</b>	<b>1,599</b>	<b>140</b>	<b>1,839</b>

Warner Graduate School of Education and Human Development	NUMBER OF CREDIT HOURS						NO. OF COURSE ENROLLMENTS					
	Fall 2003		Fall 2004		Fall 2005		Fall 2003		Fall 2004		Fall 2005	
	UG	Grad	UG	Grad	UG	Grad	UG	Grad	UG	Grad	UG	Grad
Education	22	903	26	998	8	1,281	6	392	9	421	3	545
Field Experiences	-	79	-	114	-	227	-	38	-	51	-	88
Higher Education	28	1,072	7	1,249	-	1,172	8	358	2	422	-	394
<b>TOTAL</b>	<b>50</b>	<b>2,054</b>	<b>33</b>	<b>2,361</b>	<b>8</b>	<b>2,680</b>	<b>14</b>	<b>788</b>	<b>11</b>	<b>894</b>	<b>3</b>	<b>1,027</b>

School of Nursing	NUMBER OF CREDIT HOURS						NO. OF COURSE ENROLLMENTS					
	Fall 2003		Fall 2004		Fall 2005		Fall 2003		Fall 2004		Fall 2005	
	UG	Grad	UG	Grad	UG	Grad	UG	Grad	UG	Grad	UG	Grad
Leadership in Health Care Sys	-	-	-	154	-	108	-	-	-	44	-	31
Nursing	1,210	925	1,272	923	1,402	924	314	248	328	247	369	248
Nursing/Community Center	122	140	58	101	421	187	42	62	24	32	138	66
<b>TOTAL</b>	<b>1,332</b>	<b>1,065</b>	<b>1,330</b>	<b>1,178</b>	<b>1,823</b>	<b>1,219</b>	<b>356</b>	<b>310</b>	<b>352</b>	<b>323</b>	<b>507</b>	<b>345</b>

University Totals	NUMBER OF CREDIT HOURS						NO. OF COURSE ENROLLMENTS					
	Fall 2003		Fall 2004		Fall 2005		Fall 2003		Fall 2004		Fall 2005	
	UG	Grad	UG	Grad	UG	Grad	UG	Grad	UG	Grad	UG	Grad
<b>Fall each academic year</b>	<b>75,982</b>	<b>30,053</b>	<b>76,112</b>	<b>27,840</b>	<b>78,196</b>	<b>28,169</b>	<b>21,369</b>	<b>9,297</b>	<b>21,499</b>	<b>8,650</b>	<b>21,962</b>	<b>8,793</b>

Notes:  
 Students registered for leave of absence, including senior year in absentia, have been excluded.  
 Eastman Dental Center credit hours are included in SMD.  
 Cross-listed registrations are reported in the parent course.  
 A minimum number of credit hour totals have been rounded to the nearest whole number.

Source: Student Information System, Institutional Research Report

**UNIVERSITY OF ROCHESTER**

**Distribution of Undergraduate Courses by Section Size**

**Fall 2005**

<b>Arts &amp; Sciences</b>	<b># Sect.</b>	<b>Avg. Size</b>	<b>1-9</b>	<b>10-19</b>	<b>20-29</b>	<b>30-39</b>	<b>40-49</b>	<b>50-99</b>	<b>100-199</b>	<b>200+</b>
African-American Studies	1	4	1	-	-	-	-	-	-	-
American Sign Language	17	13	6	11	-	-	-	-	-	-
American Sign Language	17	13	6	11	-	-	-	-	-	-
Japanese Sign Language	-	-	-	-	-	-	-	-	-	-
Anthropology	13	17	2	6	4	1	-	-	-	-
Art & Art History	20	14	4	13	2	-	1	-	-	-
Art & Art History - Art History	9	16	3	3	2	-	1	-	-	-
Art & Art History - Studio Arts	11	13	1	10	-	-	-	-	-	-
Biology	19	81	1	5	2	1	2	3	2	3
Brain & Cognitive Science	14	56	-	1	5	-	2	5	-	1
Brain & Cognitive Science	9	71	-	-	2	-	2	4	-	1
Neuroscience	5	31	-	1	3	-	-	1	-	-
Chemistry	9	137	-	-	3	2	-	-	1	3
Clinical & Social Psychology	29	40	9	9	2	1	-	3	5	-
Clinical & Soc Sciences in Psy	26	35	9	8	2	1	-	2	4	-
Psychology	3	80	-	1	-	-	-	1	1	-
Computer Science	19	27	3	9	2	1	1	2	1	-
Dance	15	10	8	6	1	-	-	-	-	-
Earth & Environmental Sciences	9	15	4	3	1	-	1	-	-	-
Economics	16	59	-	1	3	4	-	7	-	1
English	51	19	14	18	8	9	-	2	-	-
Film & Media Studies	1	9	1	-	-	-	-	-	-	-
Health & Society	1	30	-	-	-	1	-	-	-	-
History	33	21	13	8	2	4	2	4	-	-
Linguistics	7	31	-	3	1	-	2	1	-	-
Mathematics	36	41	2	3	9	5	6	11	-	-
Modern Languages & Cultures	68	15	23	25	16	1	2	1	-	-
Chinese	5	11	2	2	1	-	-	-	-	-
Comparative Literature	2	25	-	-	2	-	-	-	-	-
French	12	12	6	3	3	-	-	-	-	-
German	9	14	2	6	1	-	-	-	-	-
Italian	8	19	5	-	1	-	1	1	-	-
Japanese	10	15	3	5	1	-	1	-	-	-
Polish	1	2	1	-	-	-	-	-	-	-
Russian	7	11	3	4	-	-	-	-	-	-
Spanish	14	21	1	5	7	1	-	-	-	-
Music	34	19	13	8	5	5	1	2	-	-
Naval Science	3	15	-	2	1	-	-	-	-	-
Philosophy	14	35	3	1	3	2	1	3	1	-
Physics & Astronomy	17	46	4	2	2	4	2	-	3	-
Astronomy	3	44	1	1	-	-	-	-	1	-
Physics	14	47	3	1	2	4	2	-	2	-
Political Science	19	41	3	3	4	1	2	5	1	-
Religion & Classics	28	22	8	7	6	2	2	3	-	-
Classical Greek	2	9	1	1	-	-	-	-	-	-
Classical Studies	2	36	-	-	1	-	-	1	-	-
Judaic Studies	1	7	1	-	-	-	-	-	-	-
Religion & Classics - Arabic	4	16	2	-	1	1	-	-	-	-
Religion & Classics - Hebrew	2	17	1	-	1	-	-	-	-	-
Religion & Classics - Latin	3	15	1	1	1	-	-	-	-	-
Religion & Classics - Yiddish	1	2	1	-	-	-	-	-	-	-
Religion & Classics - Sanskrit	1	10	-	1	-	-	-	10	-	-
Religion & Classics	12	29	1	4	2	1	2	2	-	-
Russian Studies	2	19	-	1	1	-	-	-	-	-
Sociology	5	23	1	1	2	-	1	-	-	-
Statistics	5	36	-	2	1	-	1	1	-	-
The College: Arts & Sciences	51	12	14	34	3	-	-	-	-	-
Women's Studies	3	15	1	1	1	-	-	-	-	-
<b>TOTAL</b>	<b>559</b>	<b>28</b>	<b>138</b>	<b>183</b>	<b>90</b>	<b>44</b>	<b>29</b>	<b>53</b>	<b>14</b>	<b>8</b>

**UNIVERSITY OF ROCHESTER**

**Distribution of Undergraduate Courses by Section Size**

**Fall 2005**

School of Engineering and Applied Sciences	#	Avg.			20-	30-	40-	50-	100-		
	Sect.	Size	1-9	10-19	29	39	49	99	199	200+	
Biomedical Engineering	6	46	-	-	-	3	1	2	-	-	
Chemical Engineering	9	21	1	5	1	-	2	-	-	-	
Electrical & Computer Engineering	13	18	2	4	6	1	-	-	-	-	
Engineering and Applied Science	1	9	1	-	-	-	-	-	-	-	
Mechanical Engineering	13	30	2	1	4	3	1	2	-	-	
Optics	6	19	1	1	4	-	-	-	-	-	
<b>TOTAL</b>	<b>48</b>	<b>25</b>	<b>7</b>	<b>11</b>	<b>15</b>	<b>7</b>	<b>4</b>	<b>4</b>	<b>-</b>	<b>-</b>	

Simon Graduate School of Business Administration	#	Avg.			20-	30-	40-	50-	100-		
	Sect.	Size	1-9	10-19	29	39	49	99	199	200+	
Accounting	2	46	-	-	-	2	-	-	-	-	
Business Law	2	23	-	1	1	-	-	-	-	-	
Computers & Information Sys	1	8	1	-	-	-	-	-	-	-	
Finance	1	34	-	-	1	-	-	-	-	-	
General Business Admin	1	17	-	1	-	-	-	-	-	-	
Marketing	2	24	-	1	1	-	-	-	-	-	
Operations Management	1	13	-	1	-	-	-	-	-	-	
<b>TOTAL</b>	<b>10</b>	<b>26</b>	<b>1</b>	<b>4</b>	<b>3</b>	<b>2</b>	<b>-</b>	<b>-</b>	<b>-</b>	<b>-</b>	

**UNIVERSITY OF ROCHESTER**

**Distribution of Undergraduate Courses by Section Size**

**Fall 2005**

<b>Eastman School of Music</b>		<b># Sect.</b>	<b>Avg. Size</b>	<b>1-9</b>	<b>10-19</b>	<b>20-29</b>	<b>30-39</b>	<b>40-49</b>	<b>50-99</b>	<b>100-199</b>	<b>200+</b>
Accompanying		4	16	2	1	-	1	-	-	-	-
Arts Leadership Curriculum		13	12	4	7	2	-	-	-	-	-
Composition		10	7	8	2	-	-	-	-	-	-
Conducting		5	16	4	-	-	-	1	-	-	-
Eastman Initiatives Curriculum		2	65	1	-	-	-	-	-	1	-
Eastman School of Music		3	6	3	-	-	-	-	-	-	-
Ensembles		21	27	7	6	4	1	1	-	2	-
Ethnomusicology		3	5	3	-	-	-	-	-	-	-
Guitar Class		2	4	2	-	-	-	-	-	-	-
<b>Humanities</b>		<b>33</b>	<b>13</b>	<b>8</b>	<b>21</b>	<b>4</b>	<b>-</b>	<b>-</b>	<b>-</b>	<b>-</b>	<b>-</b>
Anthropology and Religion		1	19	-	1	-	-	-	-	-	-
English		3	14	1	1	1	-	-	-	-	-
French		6	11	2	4	-	-	-	-	-	-
German		6	14	2	2	2	-	-	-	-	-
History		1	10	-	1	-	-	-	-	-	-
Humanities		9	15	1	8	-	-	-	-	-	-
Italian		5	9	2	3	-	-	-	-	-	-
Philosophy		1	25	-	-	1	-	-	-	-	-
Psychology		1	18	-	1	-	-	-	-	-	-
Jazz Studies & Contemp Media		24	8	19	5	-	-	-	-	-	-
Music Education		43	6	33	10	-	-	-	-	-	-
Music History		7	25	1	3	1	-	1	1	-	-
Opera		4	11	2	1	1	-	-	-	-	-
Pedagogy		3	10	1	2	-	-	-	-	-	-
Theory		31	20	1	19	4	3	4	-	-	-
<b>SUBTOTAL</b>		<b>208</b>	<b>14</b>	<b>99</b>	<b>77</b>	<b>16</b>	<b>5</b>	<b>7</b>	<b>1</b>	<b>3</b>	<b>-</b>
<b>Applied Music</b>		<b>197</b>	<b>7</b>	<b>156</b>	<b>33</b>	<b>4</b>	<b>4</b>	<b>-</b>	<b>-</b>	<b>-</b>	<b>-</b>
Bassoon		3	7	2	1	-	-	-	-	-	-
Chamber Music		14	17	5	3	2	4	-	-	-	-
Clarinet		6	6	5	1	-	-	-	-	-	-
Double Bass		2	10	1	1	-	-	-	-	-	-
Euphonium		2	4	2	-	-	-	-	-	-	-
Flute		5	7	4	1	-	-	-	-	-	-
Guitar		2	9	1	1	-	-	-	-	-	-
Harp		2	6	1	1	-	-	-	-	-	-
Harpsichord		2	3	2	-	-	-	-	-	-	-
Horn		3	7	2	-	1	-	-	-	-	-
Jazz Lessons		13	3	13	-	-	-	-	-	-	-
Keyboard		6	6	5	1	-	-	-	-	-	-
Oboe		5	6	4	1	-	-	-	-	-	-
Organ		5	3	5	-	-	-	-	-	-	-
Percussion		4	8	2	2	-	-	-	-	-	-
Piano		17	8	11	5	1	-	-	-	-	-
Piano Class		46	4	44	2	-	-	-	-	-	-
Piccolo		1	5	1	-	-	-	-	-	-	-
Saxophone		3	7	2	1	-	-	-	-	-	-
Strings		1	3	1	-	-	-	-	-	-	-
Trombone		4	7	3	1	-	-	-	-	-	-
Trumpet		3	8	2	1	-	-	-	-	-	-
Tuba		1	7	1	-	-	-	-	-	-	-
Viola		5	6	4	1	-	-	-	-	-	-
Violin		13	6	10	3	-	-	-	-	-	-
Violoncello		8	4	7	1	-	-	-	-	-	-
Voice		21	7	16	5	-	-	-	-	-	-
<b>TOTAL</b>		<b>405</b>	<b>10</b>	<b>255</b>	<b>110</b>	<b>20</b>	<b>9</b>	<b>7</b>	<b>1</b>	<b>3</b>	<b>-</b>

**UNIVERSITY OF ROCHESTER**  
**Distribution of Undergraduate Courses by Section Size**  
**Fall 2005**

School of Medicine and Dentistry	#	Avg.								
	Sect.	Size	1-9	10-19	20-29	30-39	40-49	50-99	100-199	200+
Microbiology	2	28	-	-	1	1	-	-	-	-
<b>TOTAL</b>	<b>2</b>	<b>28</b>	<b>-</b>	<b>-</b>	<b>1</b>	<b>1</b>	<b>-</b>	<b>-</b>	<b>-</b>	<b>-</b>

School of Nursing	#	Avg.								
	Sect.	Size	1-9	10-19	20-29	30-39	40-49	50-99	100-199	200+
Nursing	14	25	2	2	3	6	-	1	-	-
Nursing/Community Center	10	14	5	3	1	1	-	-	-	-
<b>TOTAL</b>	<b>24</b>	<b>20</b>	<b>7</b>	<b>5</b>	<b>4</b>	<b>7</b>	<b>-</b>	<b>1</b>	<b>-</b>	<b>-</b>

Notes: Registrar's Student Section Extract includes all registrants who have not withdrawn as of the fourth week of classes;  
includes auditors; excludes labs and independent study.  
All cross listed registrations are listed in parent course.

Source: Student Information Files (ISIS), Institutional Research Report

**UNIVERSITY OF ROCHESTER**  
**Full-time Tenure-track Faculty\***

	1996-97	1997-98	1998-99	1999-00	2000-01	2001-02	2002-03	2003-04	2004-05	2005-06
<b><u>SCHOOL</u></b>										
Arts & Sciences	279	260	261	258	259	258	258	261	260	259
Engineering & Applied Sciences	55	53	51	50	49	53	57	57	60	57
<b>The College Subtotal</b>	<b>334</b>	<b>313</b>	<b>312</b>	<b>308</b>	<b>308</b>	<b>311</b>	<b>315</b>	<b>318</b>	<b>320</b>	<b>316</b>
Simon Graduate School of Business	39	41	40	46	48	46	47	44	41	34
Warner Graduate School of Education & Human Development	20	21	18	17	20	21	21	25	23	24
Eastman School of Music	80	86	81	82	80	82	86	86	89	86
School of Medicine & Dentistry	537	529	532	547	536	542	603	650	731	776
School of Nursing	19	17	17	14	15	16	18	18	19	17
<b>University Total</b>	<b>1,029</b>	<b>1,007</b>	<b>1,000</b>	<b>1,014</b>	<b>1,007</b>	<b>1,018</b>	<b>1,090</b>	<b>1,141</b>	<b>1,223</b>	<b>1,253</b>

\*Full-time tenure-track faculty: those who are tenured, and those in a track towards tenure. Source: School of Medicine and Dentistry (SMD counts) and Provost's Office.



**UNIVERSITY OF ROCHESTER**  
**Full-time Tenure-track Faculty**

2003-04      2004-05      2005-06

**SCHOOL AND DEPARTMENT**

**THE COLLEGE**

<b>Arts &amp; Sciences</b>			
Anthropology	6	6	6
Art & Art History	10	11	11
Biology	16	16	16
Brain and Cognitive Science	17	17	17
Chemistry	20	19	18
Clinical and Social Psychology	14	15	12
Computer Science	15	14	14
Earth and Environmental Sciences	7	6	6
Economics	15	16	18
English	19	20	19
History	17	15	14
Linguistics	3	3	3
Mathematics	17	17	18
Modern Languages & Cultures	16	15	15
Music	4	4	5
Philosophy	9	9	9
Physics and Astronomy	28	27	26
Political Science	17	19	20
Religion & Classics	9	9	10
Sociology	2	2	2
<b>SUBTOTAL</b>	<b>261</b>	<b>260</b>	<b>259</b>
<b>School of Engineering and Applied Sciences</b>			
Biomedical Engineering	4	5	5
Chemical Engineering	6	7	7
Electrical & Computer Engineering	18	18	17
Mechanical Engineering	13	14	13
Optics	16	16	15
<b>SUBTOTAL</b>	<b>57</b>	<b>60</b>	<b>57</b>

**THE COLLEGE SUBTOTAL**                      318              320              316

<b>Simon Graduate School of Business Administration</b>	44	41	34
---	----	----	----

<b>Warner Graduate School of Education and Human Development</b>	25	23	24
--	----	----	----

<b>Eastman School of Music</b>			
Composition	5	5	5
Conducting/Ensemble	4	4	4
Humanities	6	5	5
Jazz and Contemporary Media	4	4	5
Music Education	6	6	4
Musicology	7	8	8
Opera	1	1	1
Organ	2	2	2
Piano	8	8	8
Strings	14	15	14
Theory	11	11	11
Voice	7	9	8
Woodwind, Brass, Percussion	11	11	11
<b>ESM SUBTOTAL</b>	<b>86</b>	<b>89</b>	<b>86</b>

**UNIVERSITY OF ROCHESTER**  
**Full-time Tenure-track Faculty**

2003-04

2004-05

2005-06

**SCHOOL AND DEPARTMENT**

**School of Medicine  
and Dentistry\***

	<u>Tenured</u> Prof & Assoc Prof	<u>On-track</u> All Eligible Ranks	<u>Tenured</u> Prof & Assoc Prof	<u>On-track</u> All Eligible Ranks	<u>Tenured</u> Prof & Assoc Prof	<u>On-track</u> All Eligible Ranks
Anesthesiology	3	20	3	20	4	21
Biochemistry and Biophysics	20	5	19	5	17	3
Biomedical Engineering	2	1	2	2	2	4
Biomedical Genetics	3	6	4	5	4	5
Biostatistics & Computational Biology	3	7	3	12	3	12
Center for Aging & Developmental Biology	4	5	6	5	6	5
Center for Cardiovascular Research	-	6	-	9	1	5
Center for Musculoskeletal Research	-	-	-	-	-	2
Center for Oral Biology	3	2	3	3	4	2
Center for Pediatric Biomedical Research	-	-	-	-	-	2
Center for Vaccine Biology & Immunology	4	4	4	4	4	4
Community & Preventive Medicine	4	9	4	11	4	10
Dentistry	1	16	1	19	1	16
Dermatology	2	5	2	6	2	6
Emergency Medicine	-	18	-	21	-	20
Environmental Medicine	5	8	5	10	5	9
Family Medicine	-	8	1	8	1	12
Imaging Sciences**	5	23	4	28	5	29
Laboratory Animal Medicine	-	3	-	2	-	1
Medicine	24	89	25	109	26	120
Microbiology & Immunology	13	6	11	9	12	9
Neurobiology & Anatomy	10	6	10	7	11	7
Neurology	12	28	13	33	13	38
Neurosurgery	2	3	2	6	3	6
Obstetrics & Gynecology	4	14	4	13	5	15
Ophthalmology	2	9	2	8	2	8
Orthopaedics	4	18	4	24	4	28
Otolaryngology	-	-	2	5	2	4
Pathology & Laboratory Medicine	9	16	9	20	9	17
Pediatrics	13	42	15	52	15	63
Pharmacology & Physiology	11	4	11	3	14	2
Physical Medicine & Rehabilitation	-	3	-	-	-	-
Psychiatry	7	46	6	48	6	50
Radiation Oncology	4	4	4	7	4	8
Surgery	8	25	6	22	5	26
Urology	3	6	3	7	3	10
Subtotal	185	465	188	543	197	579

**Medicine & Dentistry Subtotal**

650	731	776
-----	-----	-----

\*Faculty excluded from this report: Professors and Associate Professors in Option A, C-T, Geographic full-time Faculty and Professional Service Faculty, Service Track Faculty, Research Track Faculty  
\*\*Reported as Radiology prior to 2005

**School of Nursing\*\***

18	19	17
----	----	----

\*\* Clinical faculty (non-tenure track) are not reported on this table.

	2003-04	2004-05	2005-06
<b>TOTAL UNIVERSITY</b>	<b>1,141</b>	<b>1,223</b>	<b>1,253</b>

Source: Budget Office, Provost's Office, School of Medicine and Dentistry Dean's Office

**UNIVERSITY OF ROCHESTER**  
**Faculty and Staff in University Divisions\***  
**as of September 30, 2005**

UNIVERSITY DIVISIONS	Full- and Part-time Active Employees		
	FT	PT	TOTAL
Central Administration	1,321	104	1,425
The College, Arts and Sciences	864	99	963
School of Engineering/Laser Lab	404	17	421
Simon Grad School of Business	105	4	109
Warner Grad School of Education	55	25	80
Eastman School of Music	219	37	256
School of Medicine & Dentistry	3,416	397	3,813
School of Nursing	83	33	116
Memorial Art Gallery	42	14	56
Strong Memorial Hospital	5,117	1,198	6,315
Vice Provost for Health Affairs	623	84	707
<b>SUBTOTAL</b>	<b>12,249</b>	<b>2,012</b>	<b>14,261</b>

STRONG HEALTH DIVISIONS	Full- and Part-time Active Employees		
	FT	PT	TOTAL
Highland Hospital	1,415	437	1,852
Highlands at Brighton	186	35	221
Visiting Nurse Service	491	248	739
<b>SUBTOTAL</b>	<b>2,092</b>	<b>720</b>	<b>2,812</b>

<b>TOTAL</b>	<b>14,341</b>	<b>2,732</b>	<b>17,073</b>
--------------	---------------	--------------	---------------

\*Time-as-reported and Casual employees are excluded.

---

Source: Human Resources