

ROOM SELECTION TIPS

2022-2023



This tip sheet includes preliminary information for students about housing options, how to proceed with room selection for next year and important room selection dates.

Office of residential
life and housing service





HIGHLIGHTS

- Entire housing application, room selection and meal plan selection on-line
- Ability to select different room types in the same process
- Process runs Monday—Friday, 8am to 6pm
- Priority for selection is based on class year
- Each student is assigned a selection day and time
- Ability to identify roommates, suitemates & apartment-mates
- Roommates and suitemates must mutually select each other
- Real time list of room and suite availability
- All can be done via a web-based link: desktop, laptop or iPad only, **but NOT your phone.**



The Quad

Burton Hall, Crosby Hall & SAM House

Average Single = ~8' x 14'

Average Double = ~15.5' x 14'

(some variance between buildings)



Burton hall



Crosby hall

While **Gilbert, Hoeing, Lovejoy and Tiernan** are off limits for upperclass students unless you are an RA, D'Lion or First-year Fellow, **Burton, Crosby, and the SAM House** are options for continuing students.

Long corridors, communal style bathrooms, mostly double rooms and a few singles. The student rooms are not carpeted. The Quad is obviously the closest to classes, a real plus for some students. **There are no elevators.**



Burton Hall and Crosby Hall

The **doubles** in **Burton and Crosby** are a bit smaller than other quad doubles but have the added bonus of an in-room sink (sorry - toilets down the hall). **Third floor rooms** in both Burton and Crosby have slanted ceilings - (charming but if you are very tall, it could be tough).

Meal Plan in **Burton, Crosby**: There are limited kitchen facilities (1 per floor) in all buildings. **Students must be on a Group 2 meal plan.**

SAM House

SAM House: SAM will not be operating as house fraternity this coming year. SAM will be coed with the first and second floors designated male and the 3rd floor designated female. There are double and single rooms. Rooms are carpeted. **Students living in SAM may select a Group 3 meal plan** as there will be kitchen facilities available.



01



02



03

01 Burton Crosby Single

02 Burton Crosby Double

03 Sam House Double



Anderson Tower

Jackson Court

Anderson Tower , Wilder Tower

Anderson/Wilder Suite Single = 7' x 12'
Anderson/Wilder Suite Double = ~10' x 12'
Anderson/Wilder Center Double = 12' x 12'

There are also **Center Doubles**. Two doubles that are joined by a shared bathroom (cleaned weekly) and have separate entrances out to the floor lobby. These rooms don't have a lounge so you'll need to make friends with others on the floor. These doubles aren't huge – again some creativity is needed to make it comfortable.

Shared kitchens for every floor in Anderson and Wilder. **Group 3 meal plan.**

In case you haven't been to this end of campus, check it out. Located beyond Danforth Dining Center, close to the Hillside. Home to many Special Interest Housing groups, **Anderson and Wilder have mostly suite style setup**. Suites typically contain 4 singles and 1 double. Most rooms are not carpeted. **The singles** are adequate size (long and narrow) – not huge- but they are a space to call your own. **The double** is smaller but workable – with a little creativity, students make this work. And besides, **you have your own suite common room (fairly large)**. The bathrooms are all renovated and are shared by all six residents. They are cleaned once a week by the ESW. Several suites have been modified to accommodate students with disabilities.



Towers Common Room



- 01 Towers Suite Single
- 02 Towers Suite Double
- 03 Towers Center Double
- 04 Towers Bathroom

Jackson Court

O'Brien Hall

O'Brien Typical Single = ~9' x 13'

O'Brien Typical Double = ~11' x 21'



O'Brien Hall

O'Brien Hall is a LEED Gold certified building for those of you who are interested in sustainability. This building is 5 stories tall with the first floor devoted to a **large building lounge, service desk, area office, building kitchen, bicycle storage room plus three public spaces** open for group use—a **large conference room, a music performance space and a dance rehearsal room!**

Floors 2-5 house students and have a mixture of singles, doubles and center doubles (shared bath) for groups of four students. Doubles are large and singles are a little bigger than average.

There are two traditional large bathrooms per floor plus two individual all gender bathrooms on each floor. Each floor has a large community lounge and a well equipped study room. **There is an elevator.**

Each room is carpeted and double rooms have sinks. By the way, **this building is air conditioned!** We've diverged from our standard student room furniture and have selected a cherry finish and new style furniture. **Room rent is a bit more for O'Brien.**



01 O'Brien Single



02 O'Brien Double



Hill Court

HILL COURT

Chambers, Fairchild, Gale,
Kendrick, Munro and Slater

Suite Single = 8' x 9.5'
Suite Double = 8' x 19'

Mostly 6 person suites with all singles (except the second floor suites that have 4 singles and a double) and a handful of 4 person suites (only 3-4).

All fourth floor rooms have built in lofts that actually make it seem like you have a two story room. Mattresses are placed directly on the loft deck.

The singles are adequate size – more square shaped. Some of the furniture in each room is built-in.

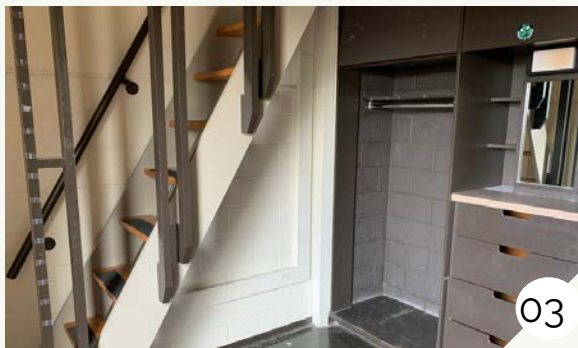
Each suite has a common room to itself – small but it works. Did we mention that there are shared balconies?



01



02



03

There are **no elevators** in Hill Court buildings. All rooms and suites are carpeted.

01 1 person common room

02 1 person apt bedroom

03 Loft room

HILL COURT

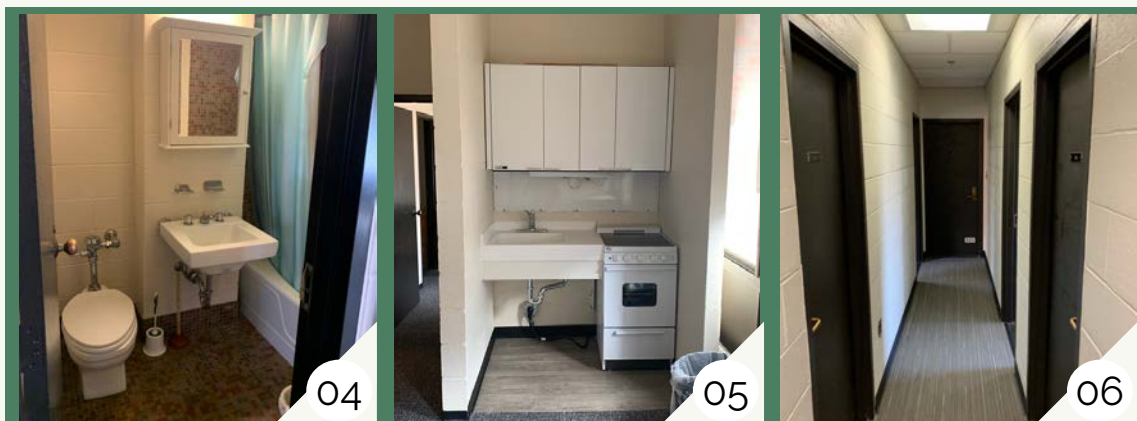
Chambers, Fairchild, Gale, Kendrick,
Munro and Slater



Suite Single = 8' x 9.5'; Suite Double = 8' x 19'

The bathroom is shared by all six (or 4 in the case of a 4 person suite) residents and is cleaned once a week by the ESW.

There are six 1 person apartments located on the first floor—2 in Chambers, 2 in Gale and 2 in Munro. They include a bedroom, living room and bathroom. **These apartments cost a little more.** Each of these apartments has a small kitchen—students in these apartments may **select a group 4 meal plan.**



04 1 person apt bathroom

05 1 person apt kitchen

06 Hallway

Phase (Hill Court) is next to Mt. Hope Cemetery – if you are sensitive about this, pick a suite that doesn't face in that direction!

All buildings in Hill Court require Group 2 meal plans – there are no kitchens.



SOUTHSIDE

deKiewiet and Valentine Towers, Maisonettes



Southside has become very popular with students due to the number of opportunities this area offers.

ONLY juniors and seniors can consider the Maisonettes (2 person apartments), which are the small houses at the base of the two towers. They include two bedrooms (one is large and the other is on the small side). There is a **furnished living room and full kitchen** (refrigerator, stove/oven). **The bathroom is shared.**

Residents are on their own for cleaning – these are apartment set ups. Buy some cleaning supplies!



Large rooms = ~ 10' x 14'

Small room = ~9' x 10'



01



02



03

01 Maisonettes bedroom

02 Maisonettes kitchen

03 Maisonettes bathroom

04 Maisonettes living room

SOUTHSIDE

deKiewiet and Valentine Towers, Maisonettes

Large rooms = ~ 10' x 14'

Small room = ~9' x 10'



05



06



07

DeKiewiet and Valentine have 2 and 3 bedroom apartments. **The apartments don't have a common room but there is a full kitchen** (refrigerator, stove/oven) and **a bathroom** shared by apartment mates. Both bedrooms in the 2 room apartments are good size.

In the 3 room apartments, there are two large bedrooms and a small bedroom (its square shaped and can be awkward to configure furniture). But it is a single room!

Rooms are not carpeted.

The walk is the same distance from Southside to Hutch as a walk from Phase (Hill Court) or Jackson Court. Besides, there is bus service (Blue line) or you can hop on the Park Lot shuttle (Silver Line) to get to campus easier than if you had to walk from other areas.

You can have a Group 4 meal plan – great opportunity to save some \$\$\$ but remember you will have to cook too.

05 Towers bedroom

06 Towers kitchen

07 Towers bathroom



RIVERVIEW APARTMENTS

Buildings A, B, C, D, E & G

(Juniors and Seniors only)

Room size = ~8' x 10'

Riverview is designed with juniors and seniors in mind. The best thing about Riverview, among many things, is that **each student has their own room and bathroom!** Most apartments are 2 person or 4 person - there are two three person apartments that may be available.



Whether you have a 4 person apartment or a 2 person apartment, the **common space (living room)** is good size and **the kitchens** have stoves, microwaves, refrigerators and ... **dishwashers!** By the way, there is **air conditioning** in each apartment for the few days you'll need it in the fall and spring. All rooms are carpeted.

01 Riverview room

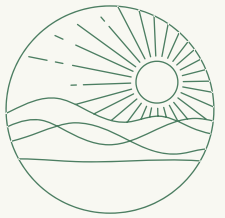
02 Riverview bathroom



Downside, you do need to clean your own apartment - this means the bathrooms too!

Other things to know about Riverview - the walls could be thicker (noise and dents). ResNet service is the same as on campus. **UR Public Safety has an office in Riverview (Building F).**





RIVERVIEW APARTMENTS

Buildings A, B, C, D, E & G

(Juniors and Seniors only)

Room size = ~8' x 10'

Many students use the **Gold Line Shuttle** to and from campus. While it doesn't run 24/7, it covers a good portion of the daytime and evening hours until 1 or 2 in the morning. **There is weekend afternoon bus service to campus.**



03 Riverview livingroom

04 Riverview kitchen

We try to be good neighbors with the community residents who live in the neighborhood near Riverview – this neighborhood is called the Plymouth-Exchange Neighborhood (PLEX) and borders on the 19th Ward but is actually a separate neighborhood. **You can have a group 4 meal plan—save some money \$\$\$ but remember you will still need to cook.**

While Riverview is one of the most expensive housing options, combined with a Group 4 meal plan, it becomes a good deal. **Financial Aid adjusts things to cover the cost of Riverview** so you don't need to worry about that.



Students live on floors 2–11. There are wonderful views of the City and the river. **ResNet is available** in Brooks Crossing. The basement has a large programming space and kitchen in addition to a bike storage room. Laundry facilities are located in the basement. The UR Rowing team has a training facility in the basement as well.

Brooks Crossing is similarly priced to Riverview with the exception of the 1 bedroom apartments which will be priced a bit higher. This is a group 4 meal plan building.



01 Brooks common area

02 Brooks bathroom

03 Brooks bedroom

BROOKS CROSSING



Brooks Crossing is an apartment style building open to **juniors and seniors only**. There are one bedroom, two bedroom, three bedroom and four bedroom apartments. In the same style as Riverview, each bedroom has its own bathroom.

Each apartment has a **living room** and **kitchen** complete with refrigerator, stove with oven, microwave and **dishwasher**. The apartments are **air conditioned**. All rooms are carpeted.

Parking for Brooks Crossing is located about a block away—there is no parking near the building. Students living in Brooks Crossing may select a Group 4 meal plan.

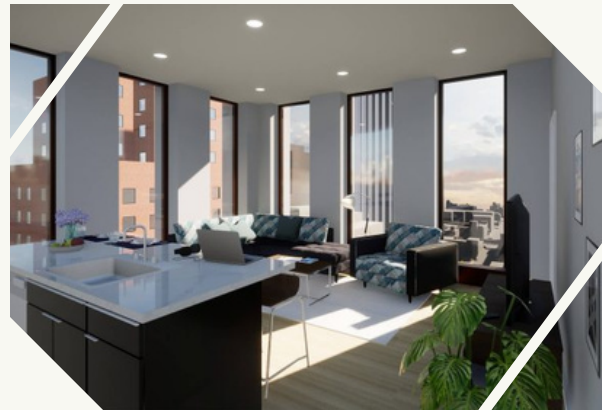




Innovation Square

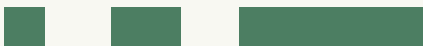
Innovation Square is our newest housing option and will be offered through the room selection process.

Innovation Square is located in the former Xerox Tower on Clinton Avenue in the City. **Only Juniors and seniors may select options in Innovation Square.** This is a **9-month housing contract (not a 12 month lease)** through Residential Life (May – August). There will be a mix of two bedroom and three bedroom apartments available in the lottery. **All are furnished.**



Both two bedroom and three bedroom apartments have fully equipped kitchens (including a dishwasher, stove with oven, microwave and refrigerator) and living rooms. The 2 bedroom apartments have 1 shared bathroom and the 3 bedroom apartments have a bathroom and a half bath (toilet and sink only). Students must have 2 people to select a two room apartment and 3 people to select a three room apartment. **There will be 6 three bedroom apartments and 14 two bedroom apartments offered in the lottery.**

The housing rate will be the same as Riverview and Brooks Crossing. The **Orange Shuttle line** stops at Innovation Square. Parking is available on-site for an additional fee (paid directly to Innovation Square). Students in Innovation Square may select a **Commuter meal plan** as an option but can select any of the other meal plans as well.



Special Interest & Standing Housing Options

Anime Interest Floor

Located on the 7th floor of Anderson Towers, we are a community that shares personal experiences and reflects on Anime and manga that we watch/read for fun. We create a fun environment to help you get away from your difficult week. [Website](#)

Douglass Leadership House

The mission of the DLH is to establish an engaging intellectual community where students of all cultural backgrounds can come together and raise awareness of the many facets of the black experience: culture, politics, history, and Diasporic roots. [Website](#)

Music Interest Floor

MIF's primary objective is to connect students who want to be a part of a tight-knit, musically focused community. MIF seeks to support and promote music campus-wide and beyond and sets up events, projects, and services throughout the academic year. [Website](#)



Drama House

Drama House stands on our principles of creativity, artistic collaboration, and gender and sexuality inclusion. We host events that focus on encouraging a strong campus & local theater community. [Website](#)

GreenSpace

GreenSpace is dedicated to living a sustainable lifestyle. Our mission is to come together, learn from one another, and do our best to lead lives of environmental consciousness. [Website](#)

Computer Interest Floor

CIF is a close-knit and friendly community. Activities range from playing video games to flexing our culinary muscles to public game nights! We also manage the CIF services, go out on the town for floor dinners, and host the CIF picnic each semester. [Website](#)

Lilac Living

The mission of Lilac Living is to create an open and secure environment for people of all sexual orientations and genders on the University of Rochester campus and in the community at large. The house is named after a color that represents the vivid and loving nature of the LGBTQIA+ community. [Website](#)



INSIDER INFORMATION



Meal plans are connected with residence halls. Be sure you know what the meal plan requirement is for the place you want to live. Sometimes you can save good money by thinking about this combination.

Remember that a Group 4 meal plan is cheaper, but the plan assumes students will be buying groceries and cooking. Your financial aid takes into account you will need to buy groceries.



Check out the virtual open houses if you have never been to a particular residence hall area. Called "**Housing Selection: Different Areas, Q & A**" you get to see first-hand view of what a suite or apartment looks like inside. Judge for yourself if this would be a good housing situation for you and your friends. **This is scheduled for April 1, 3pm—5pm.**



Phase's real name is Hill Court—buildings are Chambers, Fairchild, Gale, Kendrick, Munro and Slater.
Southside - buildings include deKiewiet (pronounced "d key wit"), Valentine and the Maisonettes.
Jackson Court includes Anderson, Wilder and O'Brien Halls.



You must have the right number of people to participate for suites and apartments— 6 students for the 6 person suite, 3 students for the Southside three room apartment, 4 students for the Riverview 4 person apartment.

Remember, this is a lottery and not everyone gets the best time and day to select their room. Be assured that ultimately, everyone will have housing.



If you aren't a rising junior or senior, you are not eligible for Riverview, Brooks Crossing, Innovation Square or the Maisonettes. All in good time!

Don't forget—rising sophomores are required to live on campus.



The University has not yet determined whether fall study abroad programs will be approved. If your plan is to live off campus if you don't go abroad, don't sign up to participate in the lottery. If your back up plan is to live on campus in the fall, it is better to be on the safe side and participate in room selection. If you end up going, your housing contract is cancelled.



Check out the floor plans in advance—available on the Reslife website.

But a caution here: just because you fall in love with a particular location or room, doesn't mean it is available or that the gender of the room or hallway is right. Use the floor plans to familiarize yourself with a building, not to pick a particular space. "This side of the building faces the cemetery; this side of the building faces the fraternity quad; this side of the building gets the morning sun, etc."



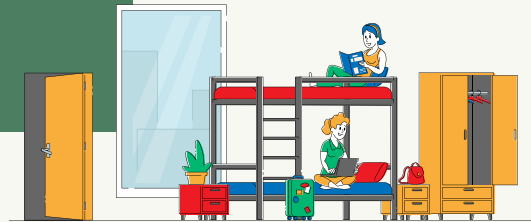
Double rooms can be coed on coed by random room floors and in suites. See Gender Inclusive Housing Policy for details.

If you want to live together in a double, suite or apartment, each student will need to mutually request each other in order for the program to put you together. **More specific details in the on-line room selection materials**

If you are in a Special Interest Housing group, Greek group or will be an RA, Apartment RA, First-year Fellow or D'lion, you must submit an on-line application but the room selection process will be different. You will receive special instructions.



What kinds of housing are there?



1 person options	2 people options
Burton Single, Space in Burton Double	Burton Double
Crosby Single, Space in Crosby Double	Crosby Double
Lovejoy Single, Space in Lovejoy Double	Lovejoy Double
O'Brien Single, Space in O'Brien Double	Anderson double next to RA
Space in Anderson Double (next to RA)	Wilder Double next to RA
Space in Wilder Double (next to RA)	O'Brien Double
deKiewiet single with RA	Anderson Apt for 2
Valentine single, Valentine single with RA	Wilder Apt for 2
Maisonette Single with RA	deKiewiet 2 person Apt
Brooks Crossing	Valentine 2 Person Apt
Hill Court (6 former RA apts)	Maisonettes
Spaces in suites with RA	Riverview A/B/D/E/G
	Brooks Crossing
	Innovation Square

To be continued.....

What kinds of housing are there?



3 people options	4 people options	5 people options	6 people options
deKiewiet 3 person Apt	Anderson Center Double	Wilder 5 suite (2)	Anderson 6 suite
Valentine 3 person Apt	Wilder Center Double	Anderson 5 suite (2)	Wilder 6 suite
Riverview A (only 1)	O'Brien Center Double		Chambers 6 suite
Riverview B (only 1)	Chambers 4 suite (only 1)		Fairchild 6 suite
Brooks Crossing	Kendrick 4 suite (only 1)		Gale 6 suite
Innovation Square	Munro 4 suite (only 1)		Kendrick 6 suite
	Slater 4 suite (only 1)		Munro 6 suite
	Riverview A/B/C/G		Slater 6 suite Slater 436—no loft (Slater 430 suite)
	Brooks Crossing		

Big Picture Items

Who is eligible to participate in Room Selection for 2022-23?

Students in the class of 2025 and 2026 are required to live on campus (residence halls, greek housing, or special interest housing). Juniors (2024) and Seniors (2023) are eligible but not required. Off campus students must contact Residential Life to be eligible.

Take 5 and E5 are not eligible for on campus housing for 2022-23. Residential Life will be not able to house Take 5 or E5 students for the 2022-23 academic year. For assistance with off campus housing, please reach out to us at offcampus@reslife.rochester.edu.



Gender Inclusive Housing Policy

Gender-inclusive housing seeks to provide an environment that is welcoming to all gender identities and is not limited to the traditional gender binary (male and female). We recognize that same-sex room assignments are not ideal or appropriate for all students. Residential Life provides opportunities for students to live in singles in apartments and suites in mixed groups as well as any standard double room on a co-ed floor as well as double rooms in suites. This housing option allows students to select roommates regardless of their sex, gender, or gender expression and to broadly choose from the relevant housing options. Unless specific mutual requests are made by the roommates, Residential Life will continue to assign students based on the standard gender binary (male/female). **If you are considering a coed room option, please contact the Director of Housing Operations at housing@reslife.rochester.edu.**

A transgender student who seeks housing accommodations should notify Residential Life and Housing Services directly. The Director of Student Housing Administration will work with students individually to review housing options and come up with a supportive housing plan, and will facilitate these housing opportunities through the lottery process. Contact housing@reslife.rochester.edu to begin this conversation.



Medical Accommodations

Students who may need housing accommodations due to a disability must submit a request through Disabilities Services and Support no later than Friday, April 8th.

Click [here](#) to learn **Guidelines for Accommodation Requests Due to Disability: Housing and Dining Services.**



Sophomore Appeals to live off Campus

Residential Life will release a limited number of rising sophomores who are interested in living off campus for the 2022-23 year. Students must be in good academic standing to apply (not on academic probation). An Appeal request form is available at on the Residential Life Website under Lottery. This must be submitted by April 8. Those who are released to live off campus will need to provide an off campus address and emergency contact information to Residential Life by June 1, 2022.

Meal Plan

All students living on campus and off campus must be on a meal plan. For students living on campus, the meal plan is tied to the residence hall or area that you live and relates to the availability of kitchens. The more kitchen facilities, the smaller the required meal plan. The fewer kitchen facilities, the larger the required plan options. Consider this when selecting your room for next year.

Off campus students are also required to be on meal plans. Off campus students may select any of the residential plans or a commuter meal plan. The website for selecting a meal plan as a commuter student is <https://dining.rochester.edu/meal-plans/>. Off campus students will be able to download the dining application there. Edit the document and save your changes. Then save it as a pdf and email to mealplans@services.rochester.edu or drop it off at the ID Office in SBAH.

Standard contract v.s. Special limited contract

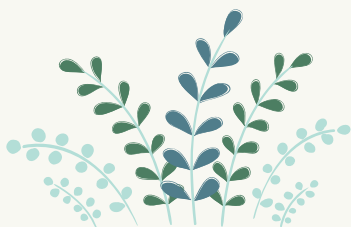
(Juniors and Seniors ONLY)

Standard Housing Contract

This is a binding contract for all sophomores, and also for juniors and seniors who want to live on campus regardless of where they select. If you don't like the space you selected or you are assigned to space that you do not like, a student can file a room change request and Residential Life would attempt to do a room change for you. Your contract remains in effect.

Special Limited Housing Contract

This is only an option for junior and senior students. Sophomores are not eligible for the Special Limited Contract option. If you select a special limited housing contract and don't pick anything during the room lottery (this applies to all upper-class housing options), Residential Life will cancel your housing contract after the room lottery is complete. If you change your mind after the contract is cancelled, you can submit a new housing contract for the waiting list for housing.





How does room selection work?

Please note: If you are in a Special Interest Housing group, Greek group or will be an RA, ARA, First Year Fellow or D'lion, you will still need to submit an on-line application but the room selection process will be different. You will receive special instructions.

There are three steps to the process:

The first step is to complete an on-line application, the second step is to select a room on-line, and the final step is to select a meal plan on-line.

The room selection process is **based on class year seniority**. Each student receives a specific day and time for selection. **Rising seniors will receive the earliest days and times to select** their room, followed by rising juniors and then by rising sophomores. Within class year, days and times are randomly assigned. Every student who submits a housing application will have a selection day and time assigned.

New this year: Spaces will be set aside for rising Sophomores.

Integral to the process is the ability to designate roommates, suitemates and apartment mates during the application submission. Each student will designate the other students with whom they are interested in living. **There must be a mutual roommate request in place for each student** – once they have selected you as a roommate, you will see a note that the mutual request is confirmed. If you are planning to select a single, you will not designate roommates.

Students will have access to all housing types at the time they select their room – depending on remaining availability and roommate designations. **The general rule of thumb is that you must have the right number of students to fill the room type that you want to select** – you must have six students to fill a six person suite, four students to fill a four person apartment or suite, three students to fill a deKiewiet 3-bedroom apartment, etc. There is **only one exception** to the “must fill” rule. A single student may select a double room and the remaining space in the room will be filled by another lottery participant or during the summer.



How does room selection work?

Once the room selection process is underway, students who have decided they want to live together need to determine who among them has the best selection day and time. The student with the earliest day and time will be able to look at remaining available spaces and pull all confirmed students into the housing space selected. **For example**, Student A has a selection time of Wednesday, at 4:02pm. Students B, C, D, E and F are all confirmed roommates. At 4:02, Student A logs in and checks the 6 person suite availability in Anderson Tower. Student A selects Anderson 410 and then assigns each roommate to a specific room in the suite. Each of the 6 students will then receive confirmation of the building and room and will be prompted to go on-line to select a meal plan appropriate to the building. Since a room has already been selected on their behalf, students B, C, D, E and F will not need to select during their own lottery time. **Meal plans must be selected individually.**

“Random” Suites Trial ✨

New this year, Residential Life will set aside several apartments in Riverview and several suites in Anderson, Wilder and Hill Court for students who wish to live in one of these areas but aren't able to fill an entire suite or apartment. These rooms in “Random Suites and Apartments” will be available under “Random suites for students without groups” option in the lottery and will be designated as part of a Random suite or apartment. These rooms will be listed as singles and doubles, not as part of a suite or apartment. For this trial year, the apartments and suites will be designated male, female or all gender. ✨



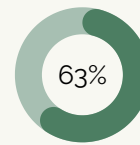
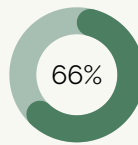


What's your strategy?



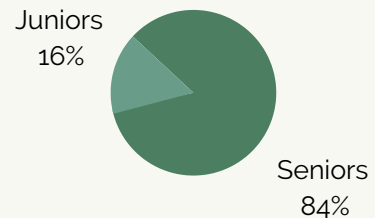
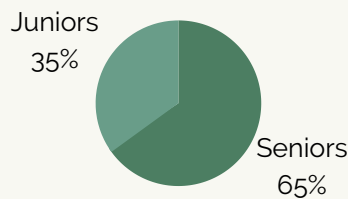
Figure out your strategy in advance. What happens if you can't get that suite in Hill Court or Jackson Court—how will you and your friends regroup? Have you considered Southside? If you have to break up a 6 person grouping, will it be into pairs for a double room or Southside 2 person apartments or maybe groups of 3 for the Southside 3 person apartments drawing? Think it through in advance.

Based on last year's drawing results, about 66% of Anderson and Wilder Towers residents are sophomores. About 63% of Phase (Hill Court) residents are sophomores and 50% of Southside residents are sophomores.



This year, 65% of the students living in Riverview were seniors and 35% were juniors.

Currently, 84% of the students in Brooks Crossing are seniors and 16% are juniors.



There are approximately **200** stand alone single rooms. Most will go to seniors and juniors. If you are a sophomore and you want to have a single room, it's a better bet to try for a suite or an apartment.

In last year's drawing (which doesn't necessarily predict this year's outcome), there were first year groups that got into Hill Court and there were quite a few first year groups that selected in Anderson and Wilder.

Off Campus Living

Juniors and Seniors are eligible to live off-campus!

Note: Do not submit a housing contract if you plan to live off campus.

The **Office for Off Campus Living Programs** (which is part of Residential Life) provides assistance, education, and support to students who are looking for housing or residing off campus. **Contact us at offcampus@reslife.rochester.edu.**

Living off campus gives students flexibility and a greater sense of freedom. There are many off-campus housing choices in and around the Rochester area. Many students look forward to being part of a neighborhood where they can immerse themselves in all of Rochester's cultural and social opportunities.

Visit [here](#) for more information on off-campus living and the off campus listing service "**Places4Students**"

Commuter Dining Contract

All off campus students are required to be on a meal plan. There are special commuter plans available - go to <https://dining.rochester.edu/meal-plans/>. Off campus students will be able to download the dining application there. Edit the document and save your changes. Then save it as a pdf and email to mealplans@services.rochester.edu or drop it off at the ID Office in SBAH.

BASIC Connectivity Information

- Housing Contract/application submission occurs on <https://housing.ur.rochester.edu/myrescenterweb> (site will open on **March 18**)
- If you are trying to log in from off-campus, you will need to secure a **VPN**. Follow the instruction in this link <https://tech.rochester.edu/remot-e-access-vpn-tutorials/>
- Recommended browsers: **Explorer, Firefox (DO NOT USE SAFARI OR CHROME)** The application process **does NOT work on smart phones—tablets OK**

Neighborhood Ambassador Program

The Neighborhood Ambassador Program is to assist UR students with their transition to off campus living. This Program assigns experienced off-campus students to selected streets where UR students choose to live. Neighborhood Ambassadors provide a point of contact for the student residents on their assigned streets, provide access to community resources, and build community through programming in order to ease the transition to off campus living. This program is intended to increase the overall achievement and satisfaction of students living off-campus, provide a leadership opportunity for students, and assist in building better relations with long-term neighborhood residents.

The application for the 2022-2023 school year opens March 2, 2022 and closes April 4, 2022.

Visit the [website](#) for the job description and application or email offcampus@reslife.rochester.edu with questions.

MARCH 14: Contract information distributed to students via email

MARCH 18: **On-line contract submission begins**

APRIL 1: Special Interest Housing & Greek member lists due to Reslife

APRIL 8: Deadline for all SIH, ALC and Greek students to submit on-line contracts

DATES TO REMEMBER

**Contract deadline
on-line process closes 11:59 pm** :APRIL 13

Selection dates and times available on webhousing site (you must login to see your day and time) :APRIL 15

On-line Room Selection (8am—6pm daily) :APRIL 18-22

First Day to submit Room Change requests :APRIL 25

Last day to complete Dining Contract on-line :APRIL 29