



Sculpted Spaces

The Memorial Art Gallery embarks on its next 100 years of cultural leadership with the opening of Centennial Sculpture Park.

FUN FAMILY: Memorial Art Gallery patron Joan Feinbloom sits with artist Wendell Castle among the pieces of *Unicorn Family*, Castle's sculpture for Centennial Sculpture Park, during a celebration marking the park's formal dedication.





SCULPTURAL STORIES: Sculptor Albert Paley (foreground) guides some of the finishing touches on *Soliloquy*, his commissioned piece for Centennial Sculpture Park. The 25-foot polychrome stainless steel sculpture will be installed late this summer.

New park is designed to extend the gallery's connections to the community.

WHEN THE DOORS TO THE MEMORIAL ART GALLERY OPENED 100 years ago this fall, the museum's chief benefactor, Emily Sibley Averell Watson, had one important stipulation: that the doors be open to all citizens of the community. Watson's belief that a world-class museum enriches the cultural and civic life of the community is taking new shape this year with the opening of Centennial Sculpture Park, a 10-acre showcase of public art and landscaped urban space designed to celebrate the gallery's cultural leadership as well as to build stronger ties to the gallery's surrounding neighborhoods.



Nancy Jurs
Emergence (1995)



Deborah Butterfield
Wailana (1999)



George Rickey
*Two Lines Up Excentric—
Twelve Feet* (2000)



Albert Paley
Millennium Bench (2000)



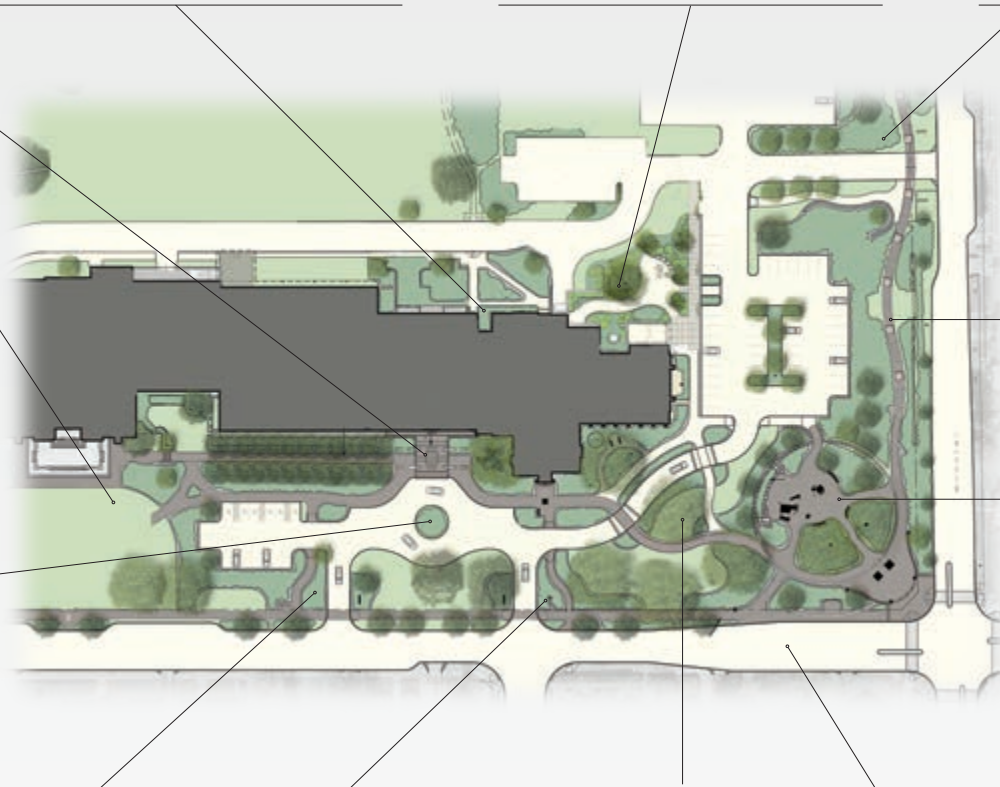
Todd McGrain
Passenger Pigeon (2007)



Mary Taylor
Filly (2008)



Albert Paley
Soliloquy (2013)



Jackie Ferrara
Marking Crossways (2013)



Tom Otterness
Creation Myth (2012)



Wendell Castle
Unicorn Family (2013)



Beverly Pepper
Vertical Ventaglio (1967-68)



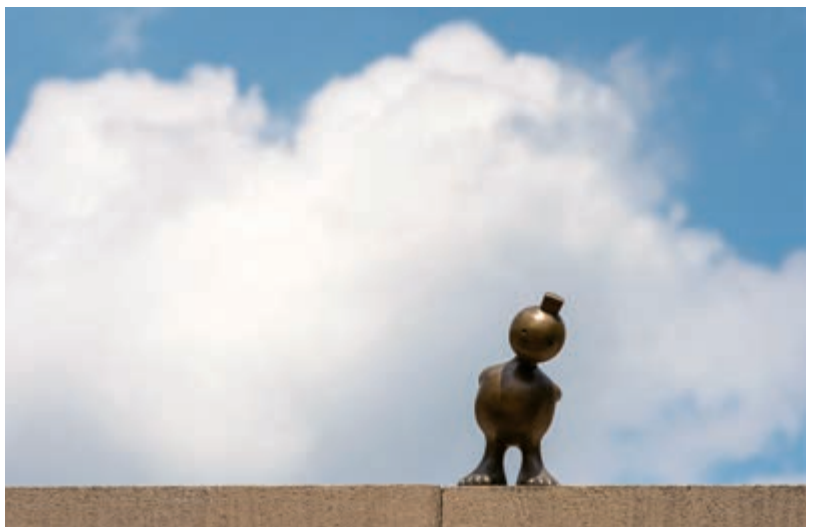
Tony Smith
Playground (1962-66)



EPIC TALE: *Creation Myth*, a site-specific commission by sculptor Tom Otterness, tells the story of an artist—depicted by figurines that dot the park (right)—who is trying to bring a larger work of art to life (above).

With installations by four internationally recognized sculptors anchoring the grounds around the gallery, the new park features sculptures from the gallery's collections, interactive walkways, whimsical gathering places, and venues for public performances—all integrated with other arts and cultural initiatives such as ART-Walk, an effort to transform the Neighborhood of the Arts into an outdoor museum. **R**

The gallery will celebrate its 100th anniversary with a public birthday party on the grounds of the museum on Sunday, Oct. 13.





WALK THIS WAY: Featuring walkways commissioned from artist Jackie Ferrara—including *Path of Colors*, a red and orange brick pathway that connects Goodman Street and University Avenue with the gallery's main entrance (above)—the park is designed to encourage visitors to linger (left).